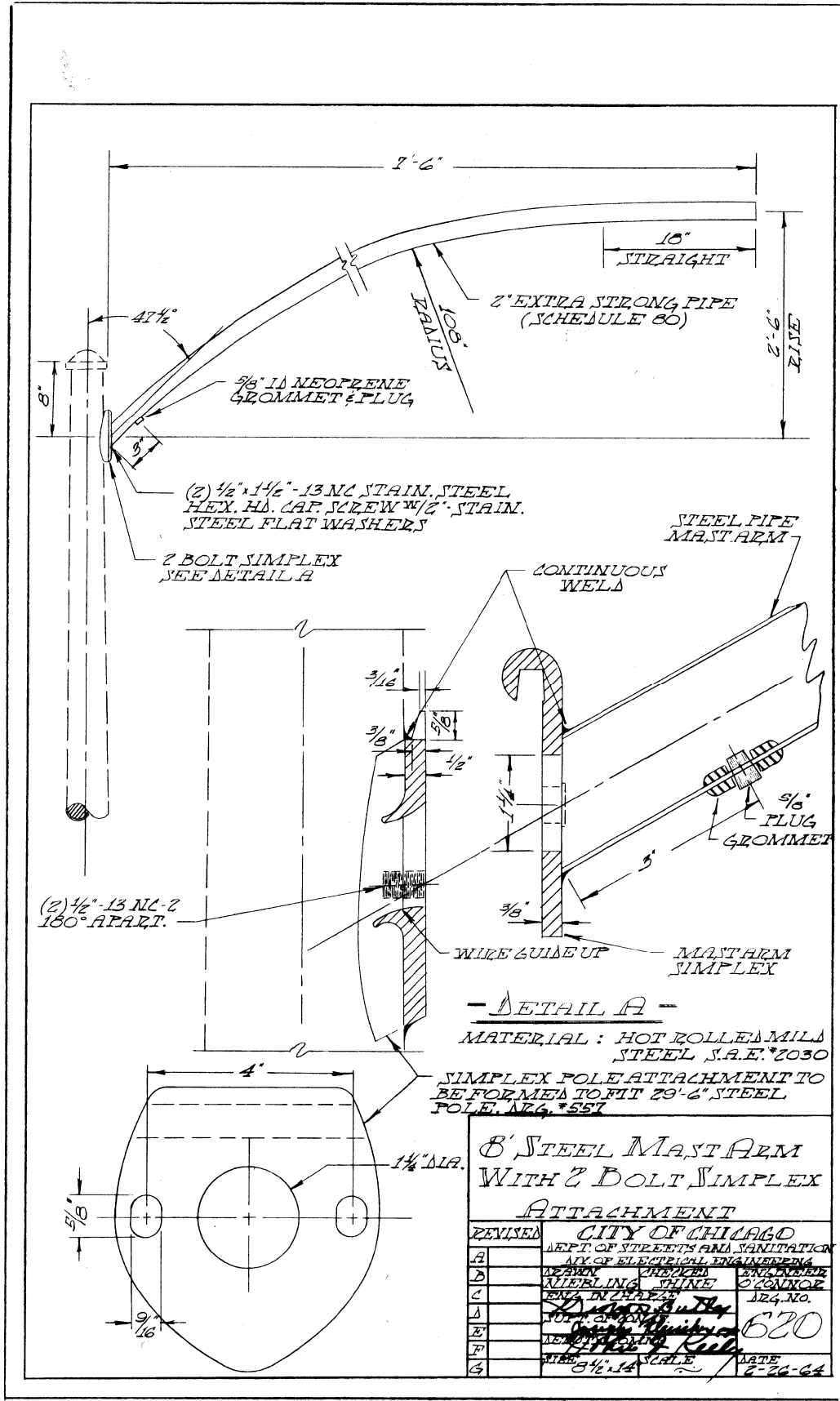


BILL OF MATERIALS				
CODE NO.	DWG.	ITEM	SIZE	QTY
05-3267-2940		CONC. CL. "X".6 BAG	CU.YD.	0.8
37-8180-0220		ANCHOR ROD	1"X60"	4
05-5048-6910	793	REINF. ROD CAGE	5'X20"	1
09-7796-9200		GROUND ROD	3/4"X10'	1
09-2636-3240		GROUND ROD CLAMP	3/4"	1
09-4001-41	11825	COND. ELBOW, 24"R.	AS NOTED	1
09-2092-91		CONDUIT BUSHING	AS NOTED	1

REV.	DATE
FOUNDATION FOR 32'-6" ANCHOR BASE POLE WITH ONE ELBOW	
CITY OF CHICAGO DEPARTMENT OF STREETS AND SANITATION BUREAU OF ELECTRICITY	
DRAFTSMAN: R. CARTER	CHIEF DRAFTSMAN: R. CARTER
ENGINEER OF ELECTRICITY: J. O'CONNOR	
SUPERINTENDENT OF CONSTRUCTION:	
DEPUTY COMMISSIONER:	
SIZE: 8-1/2"X14"	SCALE: NONE
DATE: 3-20-96	

753



**- DETAIL A -**  
MATERIAL: HOT ROLLED MILLS STEEL S.A.E. #2030

**8' STEEL MAST ARM WITH 2 BOLT SIMPLEX ATTACHMENT**

REVISED	CITY OF CHICAGO
A	DEPT. OF STREETS AND SANITATION
B	ANY OF ELECTRICAL ENGINEERING
C	DEPT. OF PUBLIC WORKS
D	DEPT. OF STREETS AND SANITATION
E	DEPT. OF STREETS AND SANITATION
F	DEPT. OF STREETS AND SANITATION
G	DEPT. OF STREETS AND SANITATION

J:\298\Drawn\CADD\_Sheets\CDOT\160J15-snt-CD01.tg1.cgn



USER NAME = kprajapati	DESIGNED - BN	REVISED -
PLOT SCALE = 2.000000:1.000000	DRAWN - AM	REVISED -
PLOT DATE = 27-MAR-2014 15:36	CHECKED - KGP	REVISED -
	DATE - 5/15/2013	REVISED -

**CITY OF CHICAGO  
DEPARTMENT OF TRANSPORTATION  
DIVISION OF ENGINEERING**

**63rd STREET OVER DAN RYAN EXPRESSWAY (I-90 /94)  
CDOT STANDARD DETAILS**

SCALE: N.T.S. SHEET NO. 11 OF 13 SHEETS STA. TO STA.

F.A.I. RTE.	SECTION	COUNTY	TOTAL SHEETS	SHEET NO.
94	1920-B	COOK	142	62
CONTRACT NO. 60J15				
FED. ROAD DIST. NO. 1 ILLINOIS FED. AID PROJECT				

E-11