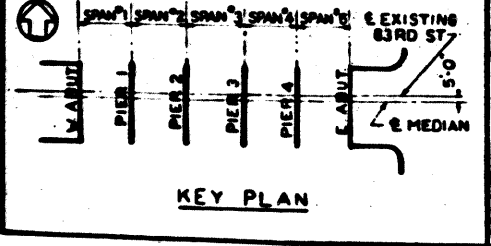
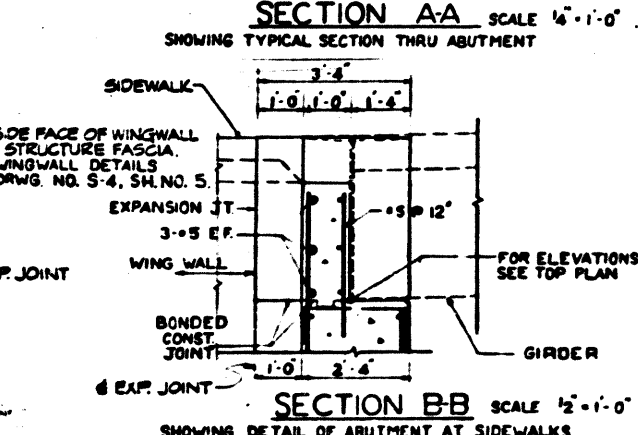
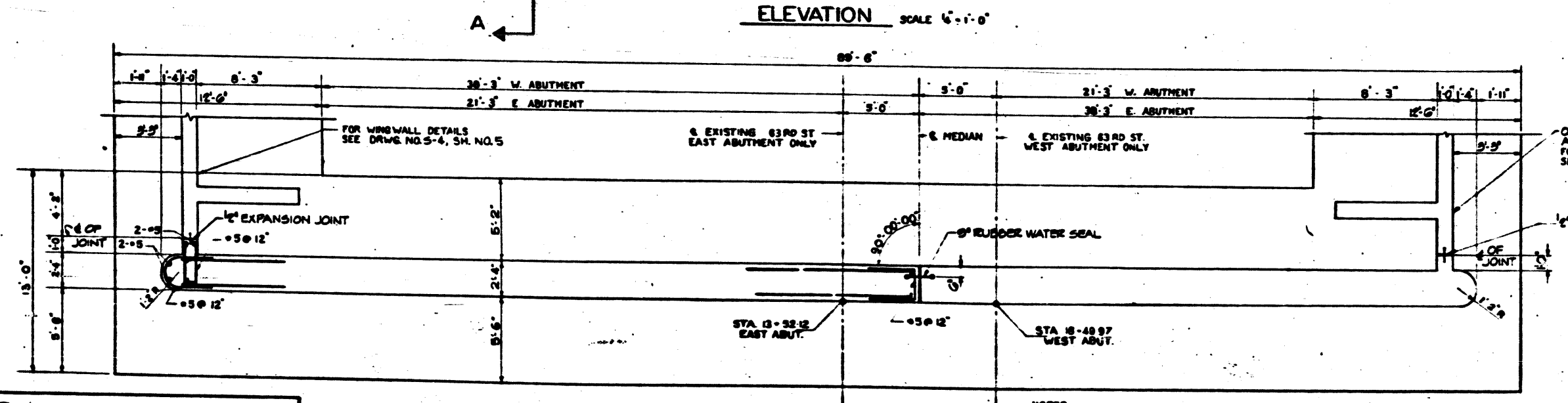
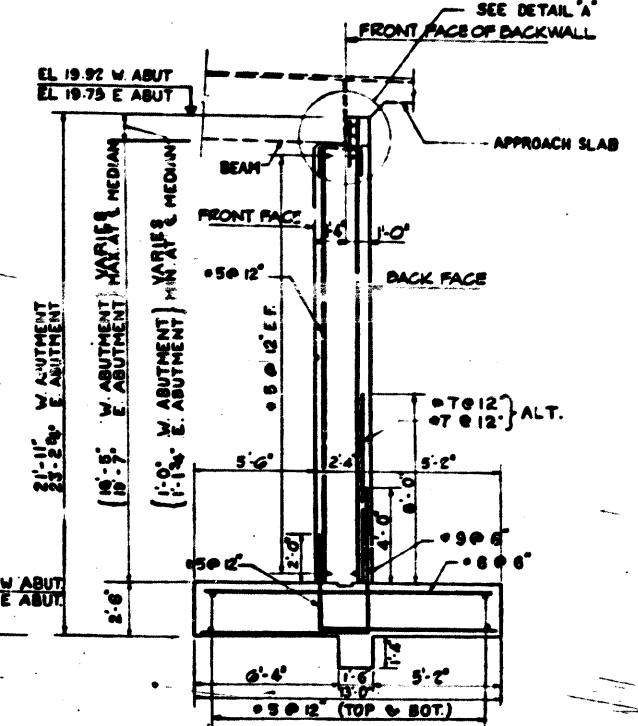


FOR INFORMATION ONLY



**BILL OF MATERIALS - ABUTMENTS & W. WALLS**

ITEM	UNIT	QUANTITY
CLASS "X" CONCRETE	CU YDS	914.2
REINFORCEMENT BARS	LBS	122,700
NAME PLATES	EACH	2

**NOTES**  
 FOR WING WALL DETAILS SEE DRWG NO. S-4, SH. 5  
 FOR DRAINAGE AND EXCAVATION DETAILS SEE DRWG NC S-2, SH. 3  
 FOR DETAILS OF STEEL CONDUIT & ELECTRICAL DETAILS SEE SHEET NO. 47

**FOOTING PLAN** SCALE 1/4"=1'-0"

CONTRACT NO. 60J15  
 SHEET NO. 118 OF 142

**REVISIONS**

DATE	BY	DESCRIPTION

**DEPARTMENT OF HIGHWAYS**  
 COOK COUNTY, ILLINOIS

**EAST & WEST ABUTMENTS**  
**63RD STREET GRADE SEPARATION**  
 OVER  
**SOUTH ROUTE EXPRESSWAY**

COMPUTED S.E. PROJECT BUI-94-31(55)56  
 DRAWN R.M.S. SCALE AS SHOWN  
 CHECKED E.M.C. APPROVED *[Signature]*

APPROVED *[Signature]* F.A.I. COUNTY Highway Sheet No. Total Sheets Drawing No.  
 94 066-1920-CF 4 48 S-3

DE LEUW, CATHNER & COMPANY  
 CONSULTING ENGINEERS