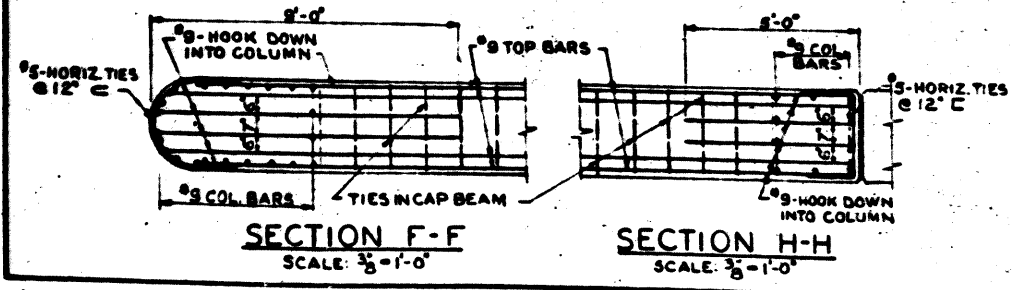
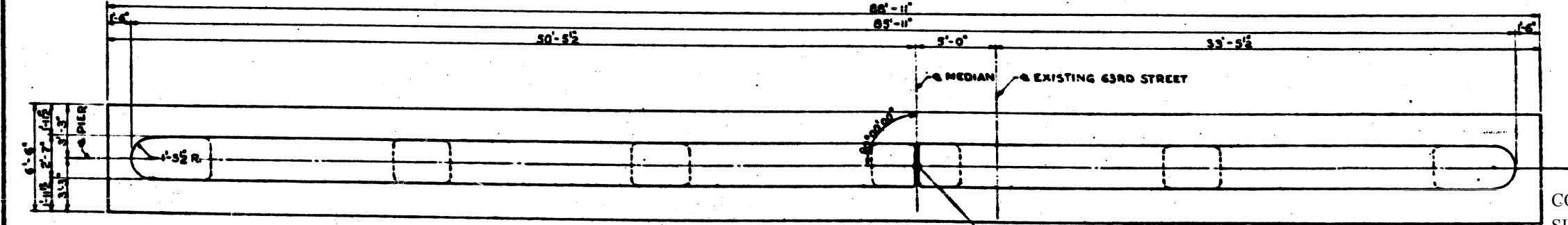
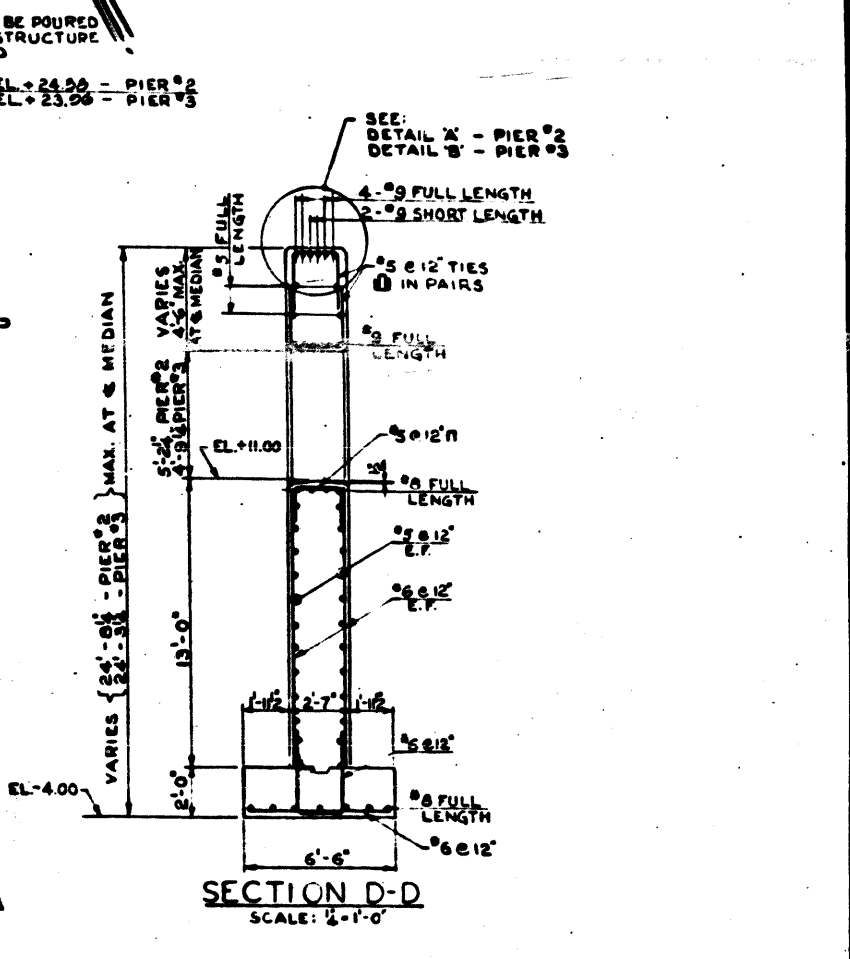
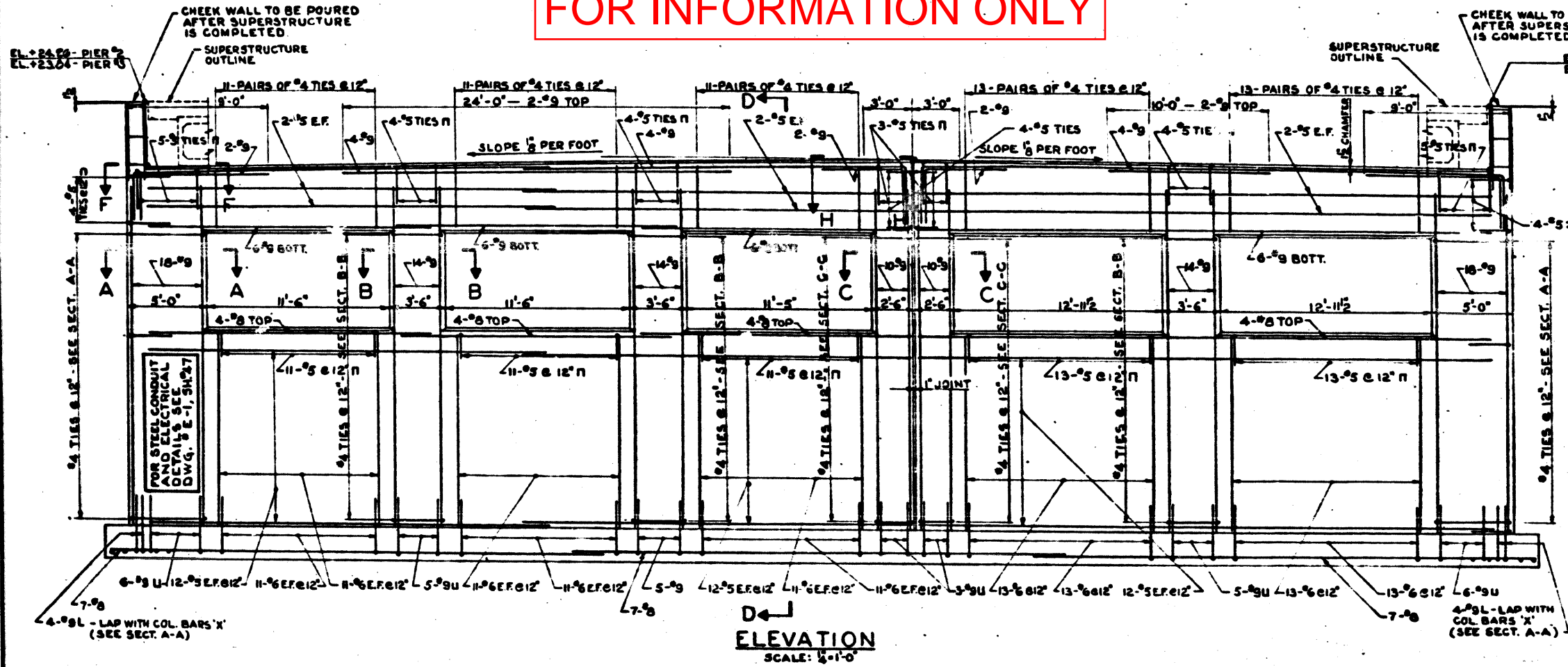
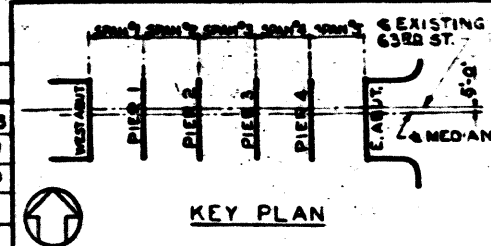


FOR INFORMATION ONLY



FOOTING PLAN SCALE: 1/8"=1'-0"

BILL OF MATERIAL				
ITEM	UNIT	PIER #2	PIER #3	
CLASS X CONCRETE	CU YDS	197.0	196.0	
REINFORCEMENT BARS	LEBS	24,700	24,700	



REVISIONS		
DATE	BY	DESCRIPTION

CONTRACT NO. 60J15
SHEET NO. 122 OF 142

NOTES FOR ELECTRICAL DETAILS SEE SHEET NO. 47 & 48

DEPARTMENT OF HIGHWAYS
COOK COUNTY, ILLINOIS

PIERS #2 & 3
63RD STREET GRADE SEPARATION
SOUTH ROUTE EXPRESSWAY

COMPUTED S.G.	PROJECT 801-94-3(55)25
DRAWN L.R.	SCALE AS SHOWN
CHECKED E.M.G.	APPROVED <i>[Signature]</i>
APPROVED <i>[Signature]</i>	F.A.I. 94
94	066-820-C.F.
8	48
S-7	

DE LEUW, CATHY & COMPANY
CONSULTING ENGINEERS