

F.A.P. RTE.	SECTION	COUNTY	TOTAL SHEETS	SHEET NO.
852	18-RS-6	WILL	26	1
		ILLINOIS	CONTRACT NO. 60N08	

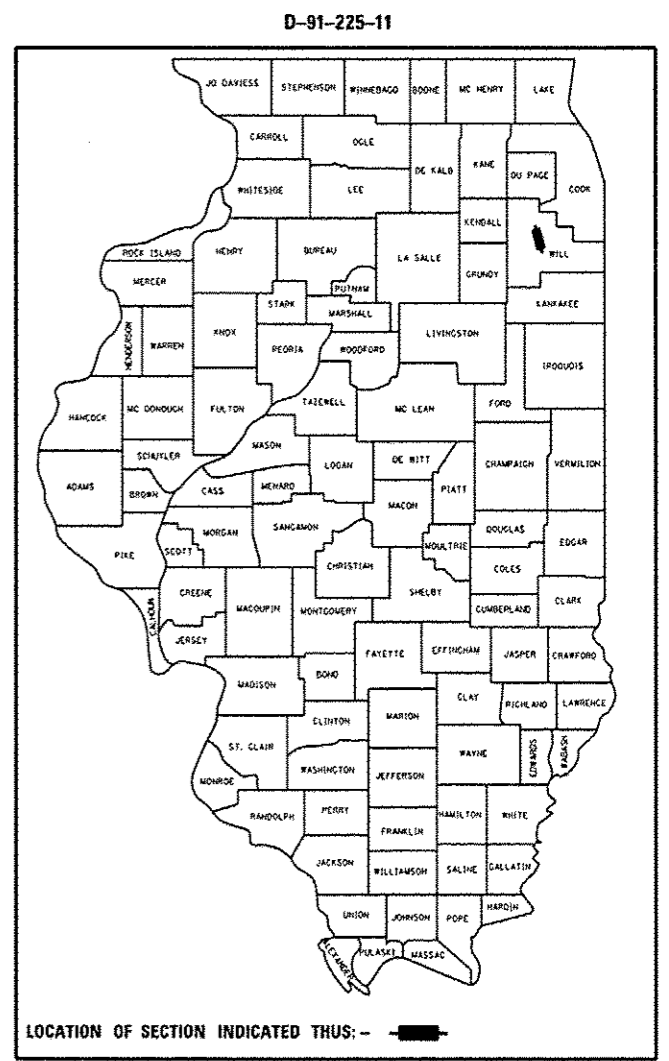
STATE OF ILLINOIS
DEPARTMENT OF TRANSPORTATION
DIVISION OF HIGHWAYS
**PROPOSED
HIGHWAY PLANS**

FOR INDEX OF SHEETS, SEE SHEET NO. 2

THE PROJECT IS LOCATED IN
THE VILLAGE OF MANHATTAN
AND UNINCORPORATED
WILL COUNTY

F.A.P. 852: US ROUTE. 52
LARAWAY ROAD TO GOUGER ROAD
SECTION: 18-RS-6

RESURFACING (3P)
WILL COUNTY
C-91-225-11

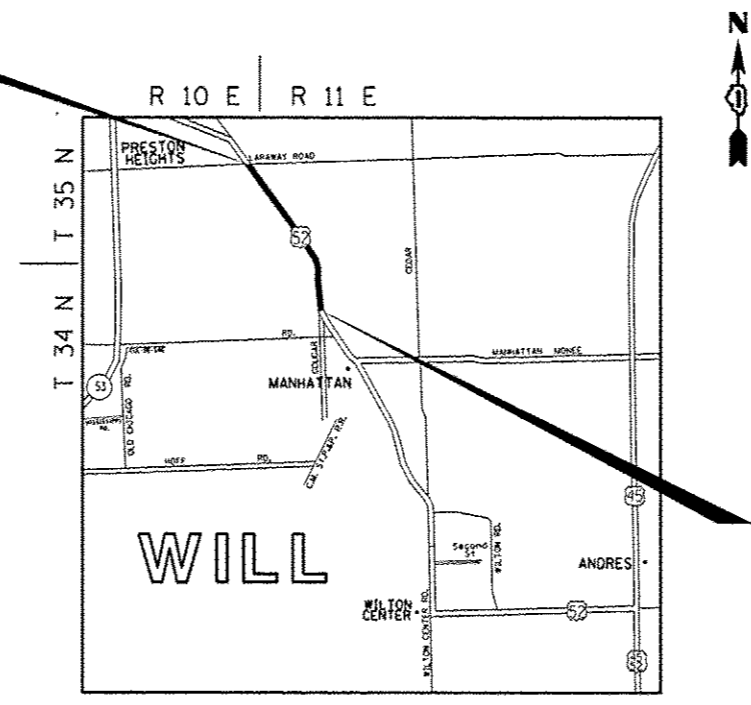


TRAFFIC DATA

2013 ADT = 8,950
POSTED SPEED LIMIT = 55 MPH

PROJECT BEGINS
STA. 19 + 57.6

OMISSIONS:
STA. 80 + 20 TO 80 + 98.3
STA. 149 + 83 TO 154 + 93.2



PROJECT ENDS
STA. 198 + 51.5

JOLIET, NEW LENOX, AND MANHATTAN TOWNSHIPS

FULL SIZE PLANS HAVE BEEN PREPARED USING STANDARD ENGINEERING SCALES. REDUCED SIZED PLANS WILL NOT CONFORM TO STANDARD SCALES. IN MAKING MEASUREMENTS ON REDUCED PLANS, THE ABOVE SCALES MAY BE USED.

J.U.L.I.E.
JOINT UTILITY LOCATION INFORMATION FOR EXCAVATION
1-800-892-0123
OR 811

PROJECT ENGINEER KARI SMITH (847) 705-4437
PROJECT MANAGER KEN ENG (847) 705-4247

GROSS LENGTH OF PROJECT = 17,893.9 FT. = 3.39 MILES
NET LENGTH OF PROJECT = 17,305.4 FT. = 3.28 MILES

STATE OF ILLINOIS
DEPARTMENT OF TRANSPORTATION
DIVISION OF HIGHWAYS

SUBMITTED 4/1 2014
John F. [Signature]
DEPUTY DIRECTOR OF HIGHWAYS, REGION ENGINEER

May 9 2014
John D. Baranzelli PE
ENGINEER OF DESIGN AND ENVIRONMENT

May 9 2014
Omer Osman PE
DIRECTOR OF HIGHWAYS, CHIEF ENGINEER

**PRINTED BY THE AUTHORITY
OF THE STATE OF ILLINOIS**

CONTRACT NO. 60N08