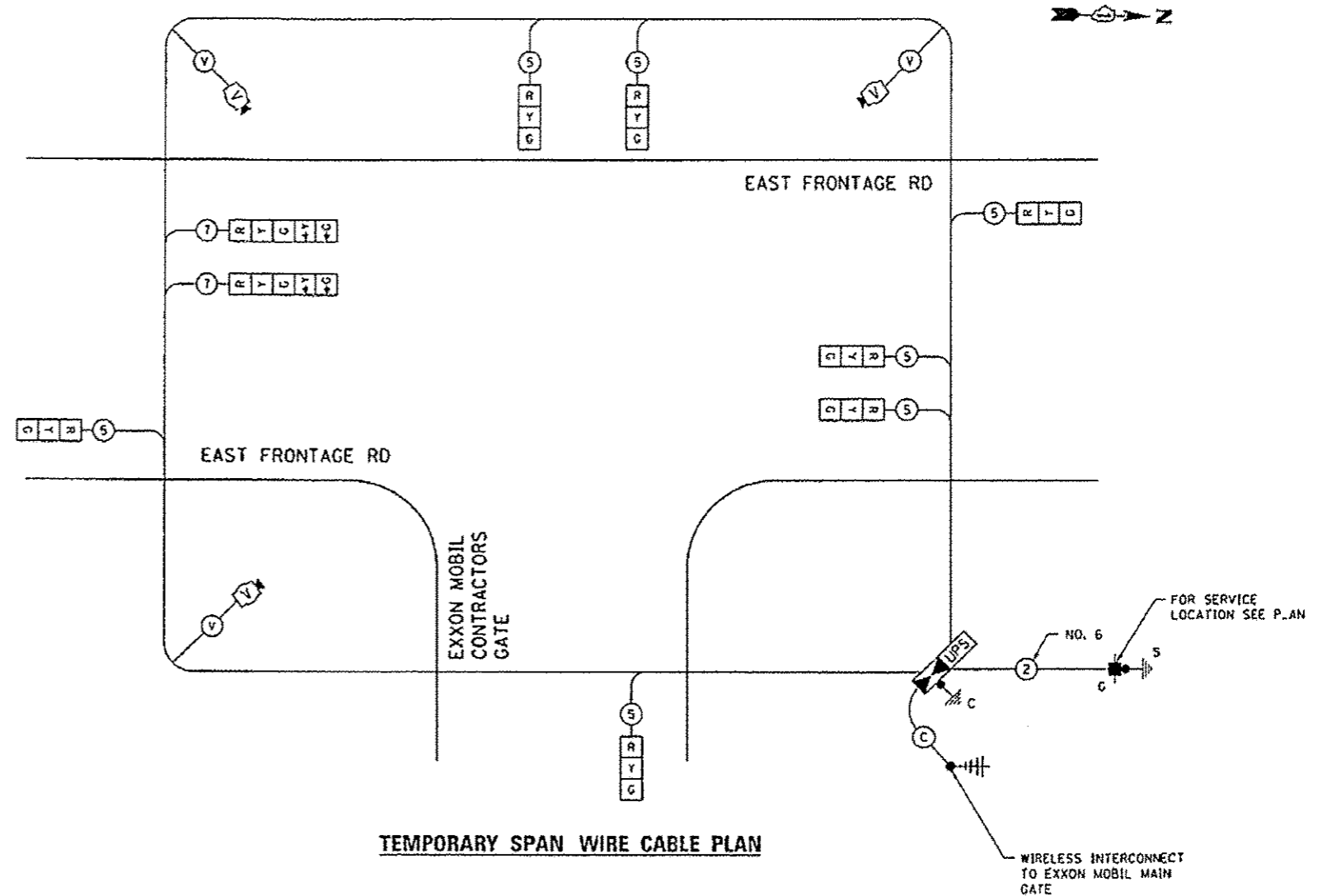


SCHEDULE OF QUANTITIES

ITEM DESCRIPTION	UNITS	TOTAL QTY.
CHANGEABLE MESSAGE SIGN	CAL NO	1
TEMPORARY CONCRETE BARRIER	FOOT	200
SIGN PANEL - TYPE 2	50 FT	49.5
SERVICE INSTALLATION - GROUND MOUNTED	EACH	1
UNDERGROUND CONDUIT, GALVANIZED STEEL, 2" DIA.	FOOT	20
SPAN WIRE	FOOT	469
TETHER WIRE	FOOT	469
ELECTRIC CABLE IN CONDUIT, SERVICE, NO. 6 2 C	FOOT	44
ELECTRIC CABLE AERIAL SUSPENDED, SIGNAL, NO. 14 5C	FOOT	1,300
ELECTRIC CABLE AERIAL SUSPENDED, SIGNAL, NO. 14 7C	FOOT	536
CONCRETE FOUNDATION, TYPE A	FOOT	4
TEMPORARY VIDEO DETECTION	EACH	1
TEMPORARY WOOD POLE, 45 FT, CLASS 5	EACH	2
FULL-ACTUATED CONTROLLER AND TYPE IV CABINET, SPECIAL	EACH	1
UNINTERRUPTABLE POWER SUPPLY, SPECIAL	EACH	1
SIGNAL HEAD, LED, 1-FACE, 3-SECTION, SPAN WIRE MOUNTED	EACH	7
SIGNAL HEAD, LED, 1-FACE, 5-SECTION, SPAN WIRE MOUNTED	EACH	2
IMPACT ATTENUATORS, TEMPORARY (NON-REDIRECTIVE), TEST LEVEL 3	EACH	1
TEMPORARY TRAFFIC SIGNAL TIMING	EACH	1
TEMPORARY WOOD POLE, 50FT, CLASS 4	EACH	2

SCHEDULE OF QUANTITIES

ITEM DESCRIPTION	UNITS	TOTAL QTY.
MAINTENANCE OF EXISTING TRAFFIC SIGNAL INSTALLATION	EACH	1
TEMPORARY TRAFFIC SIGNAL TIMING	EACH	1

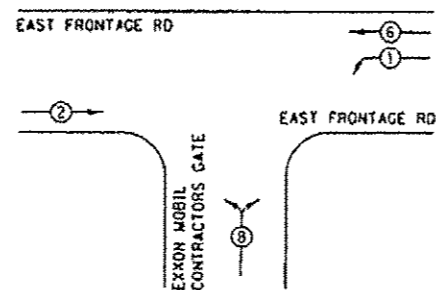


TEMPORARY SPAN WIRE CABLE PLAN

I.O.O.T. TEMPORARY TRAFFIC SIGNAL INSTALLATION ELECTRICAL SERVICE REQUIREMENTS				TOTAL WATTAGE
TYPE	NO. OF LAMPS	WATTAGE (INCAND.)	LED	% OPERATION
SIGNAL (RED)	9	17	0.50	76.50
(YELLOW)	9	25	0.25	56.25
(GREEN)	9	15	0.25	33.75
ARROW	4	12	0.10	4.80
PEO. SIGNAL	-	25	1.00	-
CONTROLLER	1	100	1.00	100.00
ILLUM. SIGN	-	25	0.05	-
VIDEO SYSTEM	1	150	1.00	150.00
UPS	1	25	1.00	25.00
FLASHER	-	-	0.50	-
ENERGY COSTS TO:	TOTAL =			446.30

WILL COUNTY DEPARTMENT OF HIGHWAYS
16841 LARAMAY ROAD
JOLIET, IL 60433
ENERGY SUPPLY: CONTACT: MS. BETTY BRULO
PHONE: (815) 724-5052
COMPANY: COMED

TEMPORARY CONTROLLER SEQUENCE



TEMPORARY PHASE DESIGNATION DIAGRAM

- LEGEND**
- DUAL ENTRY PHASE
 - SINGLE ENTRY PHASE
 - OVERLAP
 - PEDESTRIAN PHASE
 - NUMBER REFERS TO ASSOCIATED PHASE

A ADDED SHEET 5-27-14

NOTE:
THE TRAFFIC SIGNAL CONTROLLER EQUIPMENT FOR THIS PROJECT SHALL BE "EAGLE" TO MATCH THE EXISTING ADJACENT SYSTEM.

WILL COUNTY DEPARTMENT OF HIGHWAYS				SCHEDULE OF QUANTITIES, TEMPORARY CABLE PLAN, TEMPORARY PHASE DESIGNATION DIAGRAM EAST FRONTAGE RD AT EXXON MOBIL CONTRACTORS GATE				F.A. RTE.	SECTION	COUNTY	TOTAL SHEETS	SHEET NO.
FILE NAME: S:\JOL\62800-6399\6346\845\micr-os\0400	USER NAME: BJJIP	DESIGNED - LP	REVISIONS - LP 12/04/2012	SCALE: 1" = 100'	SHEET 18	OF 5	STA. TO STA.	WILL	ILLINOIS	102	72e	
Default	Sheets\0120807-shr11s.dgn	DRAWN - LP	REVISIONS - LP 01/29/2013	SCHEDULE OF QUANTITIES, TEMPORARY CABLE PLAN, TEMPORARY PHASE DESIGNATION DIAGRAM EAST FRONTAGE RD AT EXXON MOBIL CONTRACTORS GATE				55	99-IAC-2	WILL	102	72e
	PLOT SCALE: 48.0000 / in.	CHECKED - IP	REVISIONS - JW 09/20/2013	CONTRACT NO. 60P51								
	PLOT DATE: 5/27/2014	DATE: 11/16/2012	REVISIONS -	CONTRACT NO. 60P51								