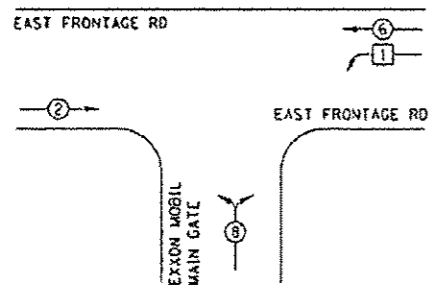


**TEMPORARY SPAN WIRE CABLE PLAN  
STAGE 2A, 2B (CONTRACT# 60P51)**

**TEMPORARY CONTROLLER SEQUENCE**

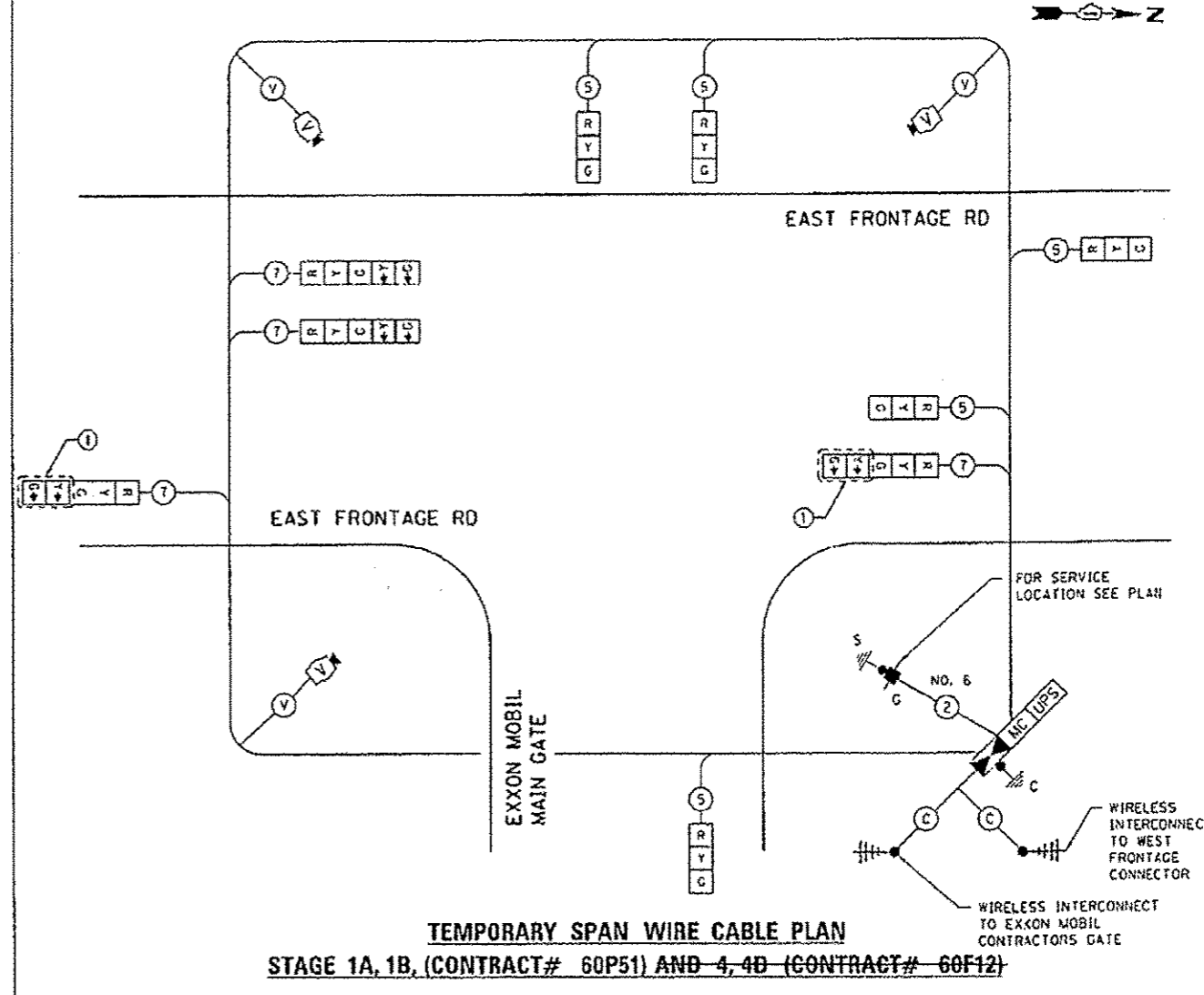


**TEMPORARY PHASE DESIGNATION DIAGRAM**

- LEGEND**
- DUAL ENTRY PHASE
  - SINGLE ENTRY PHASE
  - OVERLAP
  - PEDESTRIAN PHASE
  - NUMBER REFERS TO ASSOCIATED PHASE

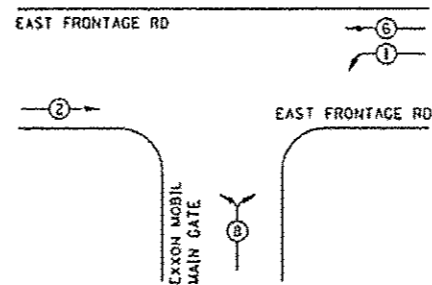
**CONSTRUCTION NOTES**

- ① CONTRACTOR SHALL BAG AND DISCONNECT RIGHT TURN OVERLAP SIGNAL INDICATION UNTIL THE CONSTRUCTION IS OVER AND FINAL STAGE IS IN OPERATION.



**TEMPORARY SPAN WIRE CABLE PLAN  
STAGE 1A, 1B, (CONTRACT# 60P51) AND 4A, 4B (CONTRACT# 60F12)**

**TEMPORARY CONTROLLER SEQUENCE**



**TEMPORARY PHASE DESIGNATION DIAGRAM**

- LEGEND**
- DUAL ENTRY PHASE
  - SINGLE ENTRY PHASE
  - OVERLAP
  - PEDESTRIAN PHASE
  - NUMBER REFERS TO ASSOCIATED PHASE

**CONSTRUCTION NOTES**

- ① CONTRACTOR SHALL BAG AND DISCONNECT RIGHT TURN OVERLAP SIGNAL INDICATION.

**A ADDED SHEET 5-27-14**

NOTE: THE TRAFFIC SIGNAL CONTROLLER EQUIPMENT FOR THIS PROJECT SHALL BE 'EAGLE' TO MATCH THE EXISTING ADJACENT SYSTEM.

FILE NAME: 1711614	USER NAME: BJJIP	DESIGNED: LP	REVISED: LP 12/04/2012
		DRAWN: LP	REVISED: JW 09/20/2013
		CHECKED: PB / SW	REVISED: JW 10/02/2013
		DATE: 11/16/2012	REVISED:

**WILL COUNTY  
DEPARTMENT OF HIGHWAYS**

TEMPORARY CABLE PLAN, TEMPORARY PHASE DESIGNATION DIAGRAM STAGE 4A, 4B (CONTRACT# 60F12) AND 1A, 1B, 2A, 2B (CONTRACT# 60P51) EAST FRONTAGE RD AT EXXON MOBIL MAIN GATE		F.A.I. RTEL.	SECTION	COUNTY	TOTAL SHEETS	SHEET NO.
SCALE: 1"=50'	SHEET 07	OF	SHEETS	STA. TO STA.	ILLINOIS FED. AID PROJECT	TS#7

FILE NAME: S:\JDL\6300--0399\6346\045\Micro\CA00	USER NAME: BJJIP	DESIGNED: LP	REVISED:
		DRAWN: LP	REVISED:
		CHECKED: IP	REVISED:
		DATE: 05/21/2014	REVISED:

**STATE OF ILLINOIS  
DEPARTMENT OF TRANSPORTATION**

TEMPORARY CABLE PLAN, TEMPORARY PHASE DESIGNATION DIAGRAM STAGE 1A, 1B, 2A AND 2B EAST FRONTAGE RD AT EXXON MOBIL MAIN GATE		F.A.I. RTEL.	SECTION	COUNTY	TOTAL SHEETS	SHEET NO.
SCALE: 1"=50'	SHEET 55	OF	SHEETS	STA. TO STA.	ILLINOIS FED. AID PROJECT	CONTRACT NO. 60P51