

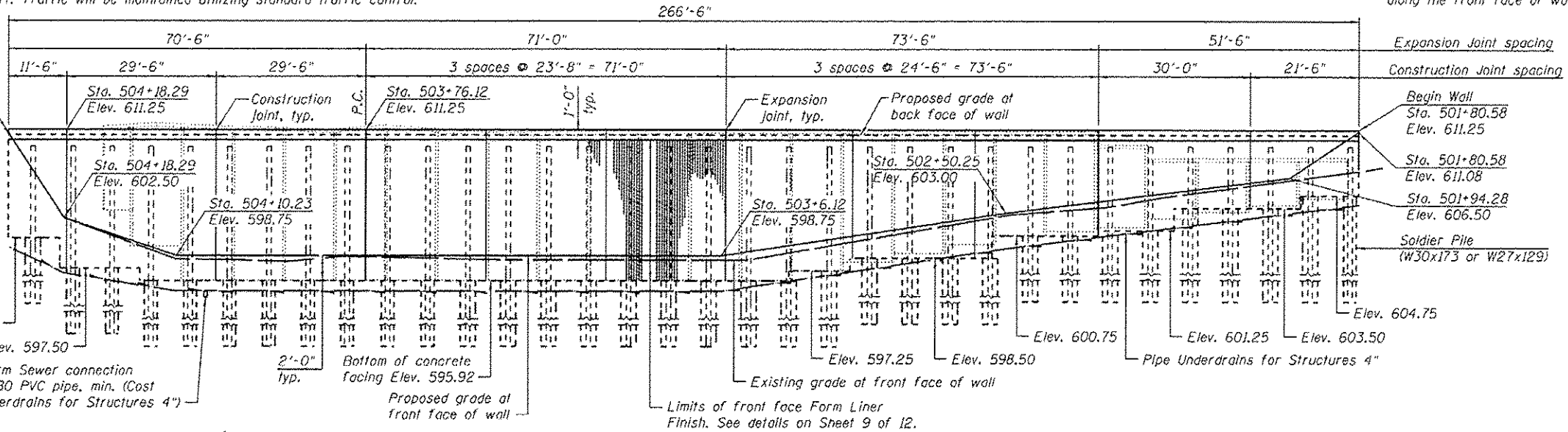
Benchmark: Chiseled Square in concrete base of traffic signal at the north east corner of 1L-171 and Willow Springs Road, Elev. 615.27

Existing Structure: Metal "Bin Style" retaining wall was built at an unknown time after 1974. The existing wall does not have a structure number. The wall height varies from ±13'-4" to ±2'-4". The posts are spaced ±10'-0" apart. Traffic will be maintained utilizing standard traffic control.

Note: All dimensions are measured along the front face of wall

No Salvage.

End Wall
Sta. 504+07.48
Elev. 611.25

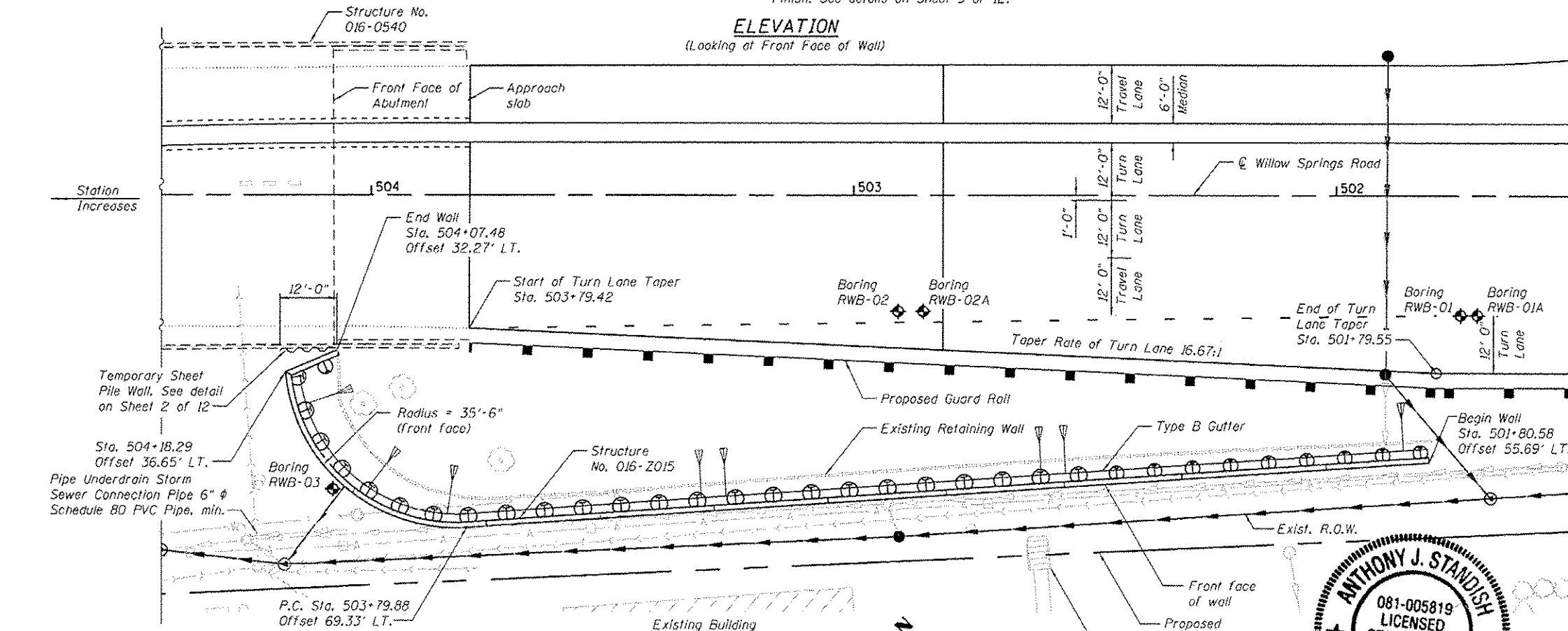


Pipe underdrain Storm Sewer connection pipe 6" Schedule 80 PVC pipe, min. (Cost included in Pipe Underdrains for Structures 4")

2'-0" typ. Bottom of concrete facing Elev. 595.92 Proposed grade at front face of wall

Limits of front face Form Liner Finish. See details on Sheet 9 of 12.

ELEVATION
(Looking at Front Face of Wall)



PLAN

Notes: Offsets are measured from the center of Willow Springs Road to the front face of wall
P.C. = Point of curvature of wall
Utility relocation shown on the roadway plans.
See Roadway plans for Type B Gutter

INDEX OF SHEETS

- 1 General Plan and Elevation
- 2 General Notes and Bill of Material
- 3 Soldier Pile Layout
- 4 Typical Section
- 5 General Details
- 6-7 Concrete Details
- 8 Pile Splice Details
- 9 Form Liner Details
- 10-12 Soil Boring Log

DESIGN SPECIFICATIONS

2012 AASHTO LRFD Bridge Design Specifications, 6th Edition

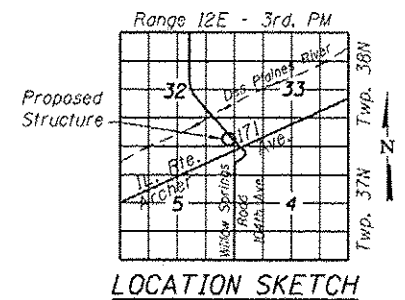
DESIGN STRESSES

FIELD UNITS

f'c = 3,500 psi
fy = 60,000 psi (Reinforcement)
fy = 50,000 psi (M270 Grade 50)

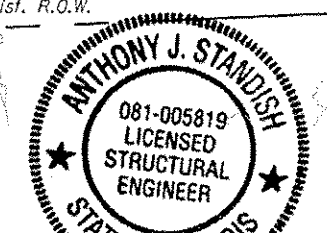
LEGEND

- Storm Sewer
- Pipe Underdrain
- Existing Storm Sewer
- Existing Sanitary Sewer
- Existing Water Main
- Aerial Electric Line
- Utility Pole
- Soil Boring
- Catch Basin
- Storm Manhole

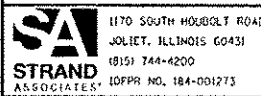


LOCATION SKETCH

GENERAL PLAN
104TH AVENUE/WILLOW SPRINGS ROAD
F.A.U. 2697 SECTION B-N-5
COOK COUNTY
STATION 501+80.58 TO STATION 504+18.29
STRUCTURE NO. 016-2015



11/2014



USER NAME	DESIGNED	REVISIONS
2-brianf	KJL	1
DESIGNED	CHECKED	REVISIONS
RRD	RRD	1
DRAWN	CHECKED	REVISIONS
BJF	RRD	1
PLOT DATE		
2/25/2014		

STATE OF ILLINOIS
DEPARTMENT OF TRANSPORTATION

GENERAL PLAN AND ELEVATION
STRUCTURE NO. 016-2015
Rev. 6-3-14

F.A.U. RTE.	SECTION	COUNTY	TOTAL SHEETS	SHEET NO.
2697	B-N-5	COOK	129	75
				CONTRACT NO. 60T24
ILLINOIS FED. AID PROJECT				

SHEET NO. 1 OF 12 SHEETS