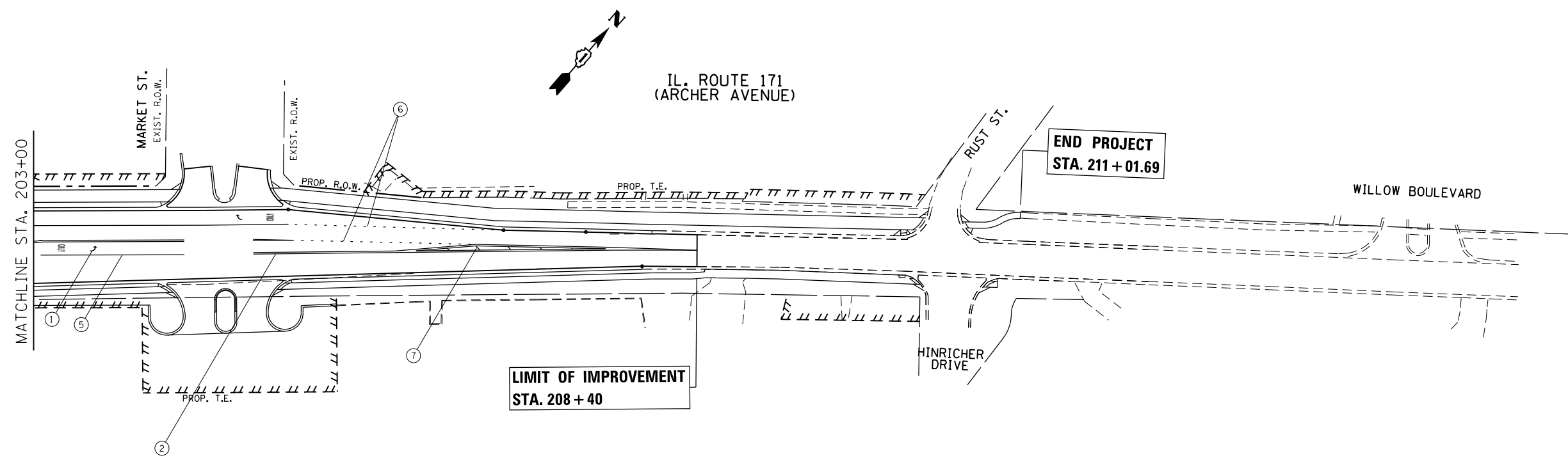
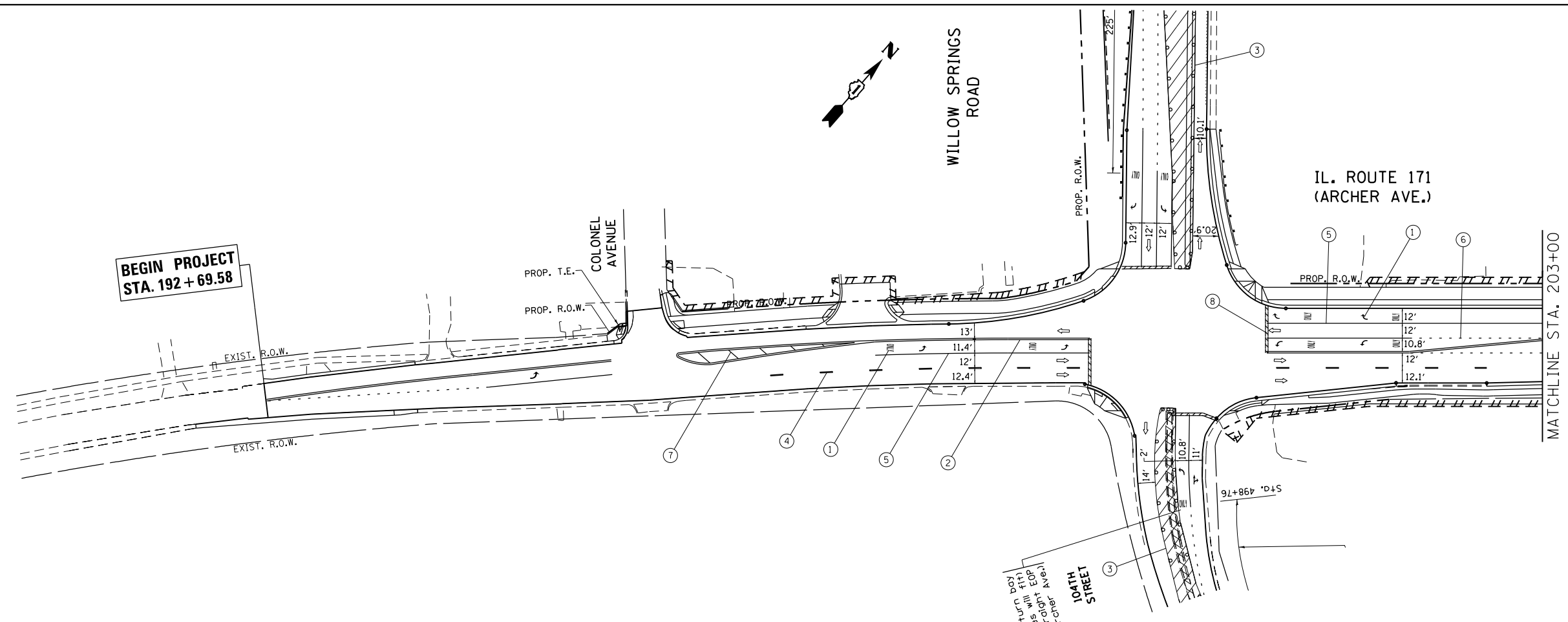


- PAVEMENT MARKING LEGEND**
- ① WET REFLECTIVE TEMPORARY TAPE
TYPE III, LETTERS & SYMBOLS (WHITE) (TYP.)
 - ② WET REFLECTIVE TEMPORARY TAPE
TYPE III, 4" (DOUBLE SOLID YELLOW) (TYP.)
 - ③ WET REFLECTIVE TEMPORARY TAPE
TYPE III, 4" (SINGLE SOLID WHITE) (TYP.)
 - ④ WET REFLECTIVE TEMPORARY TAPE
TYPE III, 4" (30' SKP, 10' DASH, WHITE) (TYP.)
 - ⑤ WET REFLECTIVE TEMPORARY TAPE
TYPE III, 6" (SOLID, WHITE) (TYP.)
 - ⑥ WET REFLECTIVE TEMPORARY TAPE
TYPE III, 6" (6' SKIP, 2' DASH, WHITE) (TYP.)
 - ⑦ WET REFLECTIVE TEMPORARY TAPE
TYPE III, 12" (DIAGONAL, YELLOW) (TYP.)
 - ⑧ WET REFLECTIVE TEMPORARY TAPE
TYPE III, 24" (STOP LINE, WHITE) (TYP.)



- LEGEND**
- ⚡ TYPE III BARRICADE WITH TWO (2) FLASHING LIGHTS
 - ⊥ SIGN
 - DRUMS WITH STEADY BURN MONODIRECTIONAL LIGHT
 - USE BI-DIRECTIONAL LIGHTING IN 2-LANE SECTIONS
 - 50' C-C TANGENTS
 - 25' C-C LANE SHIFTS & TAPERS
 - 10' C-C RADII (TYP.)
 - ➡ FLASHING ARROW BOARD
 - ▨ WORK AREA

FILE NAME =	USER NAME = paraynoal	DESIGNED -	REVISED -
ei:\pwork\pwork\paraynoal\0160753\142709-sh-t-staging3.dgn		DRAWN -	REVISED -
Default	PLOT SCALE = 100.0000' / in.	CHECKED -	REVISED -
	PLOT DATE = 12/9/2013	DATE -	REVISED -

**STATE OF ILLINOIS
DEPARTMENT OF TRANSPORTATION**

**SUGGESTED STAGING AND TRAFFIC CONTROL STAGE 3
IL. ROUTE 171 (ARCHER AVE.) AT 104th AVE.**

SCALE: 1"=50' SHEET OF SHEETS STA. TO STA.

F.A.U. RTE.	SECTION	COUNTY	TOTAL SHEETS	SHEET NO.
3565	B-N-5	COOK	129	39
CONTRACT NO. 60T24				
ILLINOIS FED. AID PROJECT				