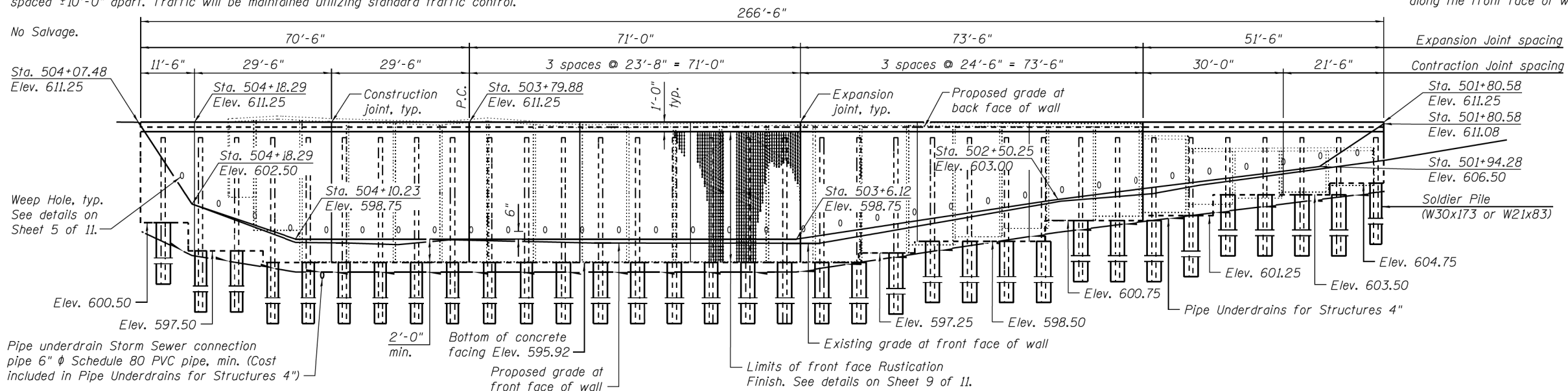


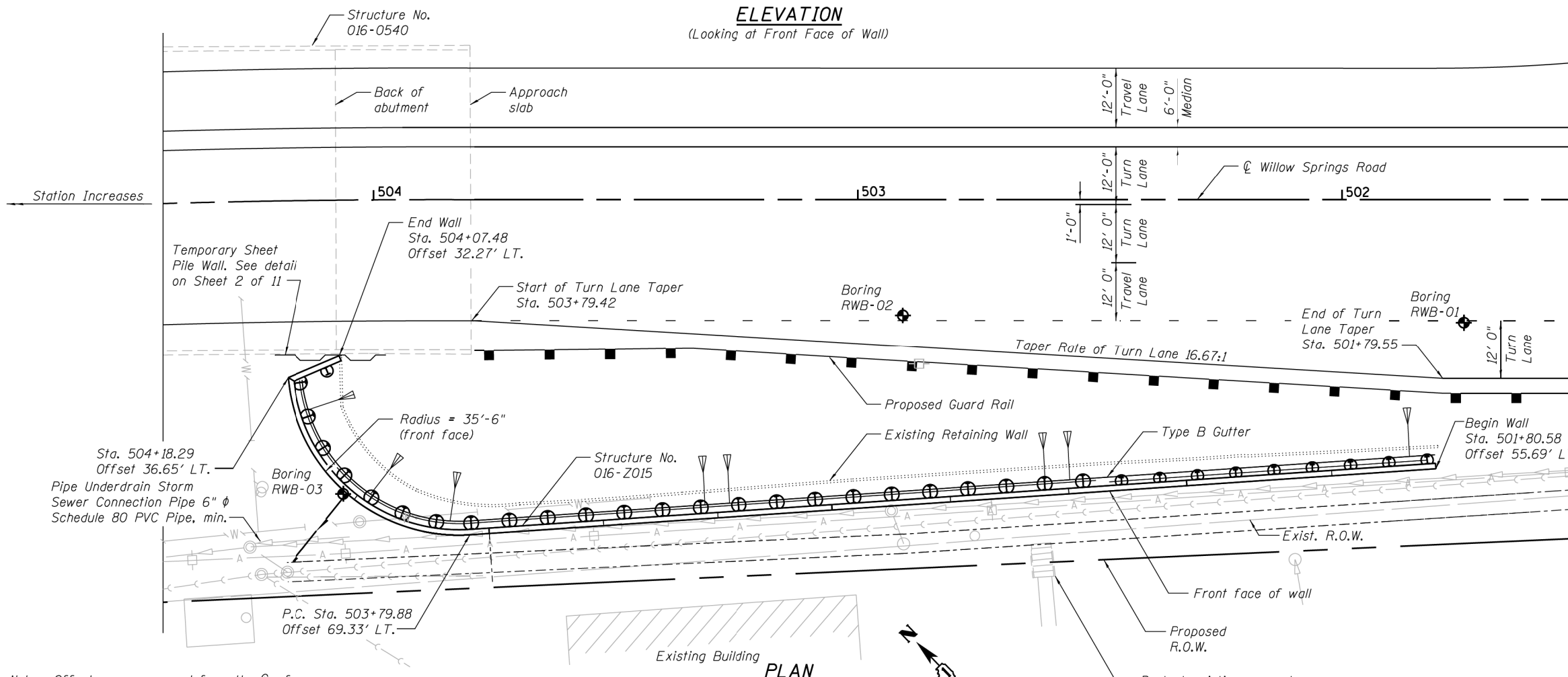
Benchmark: Chiseled Square in concrete base of traffic signal at the north east corner of IL-171 and Willow Springs Road. Elev. 615.27

Existing Structure: Metal "Bin Style" retaining wall was built at an unknown time after 1974. The existing wall does not have a structure number. The wall height varies from ±13'-4" to ±2'-4". The posts are spaced ±10'-0" apart. Traffic will be maintained utilizing standard traffic control.

Note: All dimensions are measured along the front face of wall



**ELEVATION**  
(Looking at Front Face of Wall)



**PLAN**

Notes: Offsets are measured from the  $\phi$  of Willow Springs Road to the front face of wall  
P.C. = Point of curvature of wall  
Utility relocation shown on the roadway plans.  
See Roadway plans for Type B Gutter

**INDEX OF SHEETS**

- 1 General Plan and Elevation
- 2 General Notes and Bill of Material
- 3 Soldier Pile Layout
- 4 Typical Section
- 5 General Details
- 6-7 Concrete Details
- 8 Pile Splice Details
- 9 Rustication Details
- 10-11 Soil Boring Log

**DESIGN SPECIFICATIONS**

2012 AASHTO LRFD Bridge Design Specifications, 6th Edition

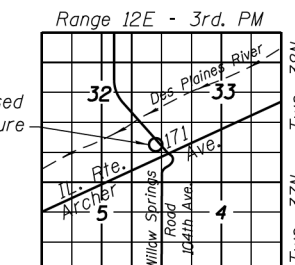
**DESIGN STRESSES**

**FIELD UNITS**

$f'_c = 3,500$  psi  
 $f_y = 60,000$  psi (Reinforcement)  
 $f_y = 50,000$  psi (M270 Grade 50)

**LEGEND**

- Pipe Underdrain
- Existing Storm Sewer
- Existing Sanitary Sewer
- Existing Water Main
- Aerial Electric Line
- Utility Pole
- Soil Boring



**LOCATION SKETCH**

**GENERAL PLAN**  
**104TH AVENUE/WILLOW SPRINGS ROAD**  
**F.A.U. 2697 SECTION B-N-5**  
**COOK COUNTY**  
**STATION 501+80.58 TO STATION 504+18.29**  
**STRUCTURE NO. 016-2015**

FILE NAME = S:\JUL163200-6039\F16346\052\Micro\CA00\_Sheets\Structure\Retaining Wall\60N2-sh1-001-CPE.dgn

**SA**  
1170 SOUTH HOUBOLT ROAD  
JULIET, ILLINOIS 60431  
(815) 744-4200  
STRAND ASSOCIATES IDFPR NO. 184-001273

USER NAME =	DESIGNED - KJL	REVISED
PLOT SCALE =	CHECKED - RRD	REVISED
PLOT DATE =	DRAWN - BJF	REVISED
	CHECKED - RRD	REVISED

**STATE OF ILLINOIS**  
**DEPARTMENT OF TRANSPORTATION**

**GENERAL PLAN AND ELEVATION**  
**STRUCTURE NO. 016-2015**  
SHEET NO. 1 OF 11 SHEETS

F.A.U. RTE.	SECTION	COUNTY	TOTAL SHEETS	SHEET NO.
3565	B-N-5	COOK	129	75
CONTRACT NO. 60T24				
ILLINOIS FED. AID PROJECT				