

STATE OF ILLINOIS  
DEPARTMENT OF TRANSPORTATION  
DIVISION OF HIGHWAYS

**PROPOSED  
HIGHWAY PLANS**

F.A.P. ROUTE 338: IL 59 (SUTTON RD.)  
AT METRA RAILROAD  
SECTION: 110V-R-1-BR  
BRIDGE REPAIR / BRIDGE DECK OVERLAY  
COOK COUNTY

C-91-342-13

F.A.P. RTE.	SECTION	COUNTY	TOTAL SHEETS	SHEET NO.
338	110V-R-1-BR	COOK	28	1
		ILLINOIS	CONTRACT NO. 60W59	

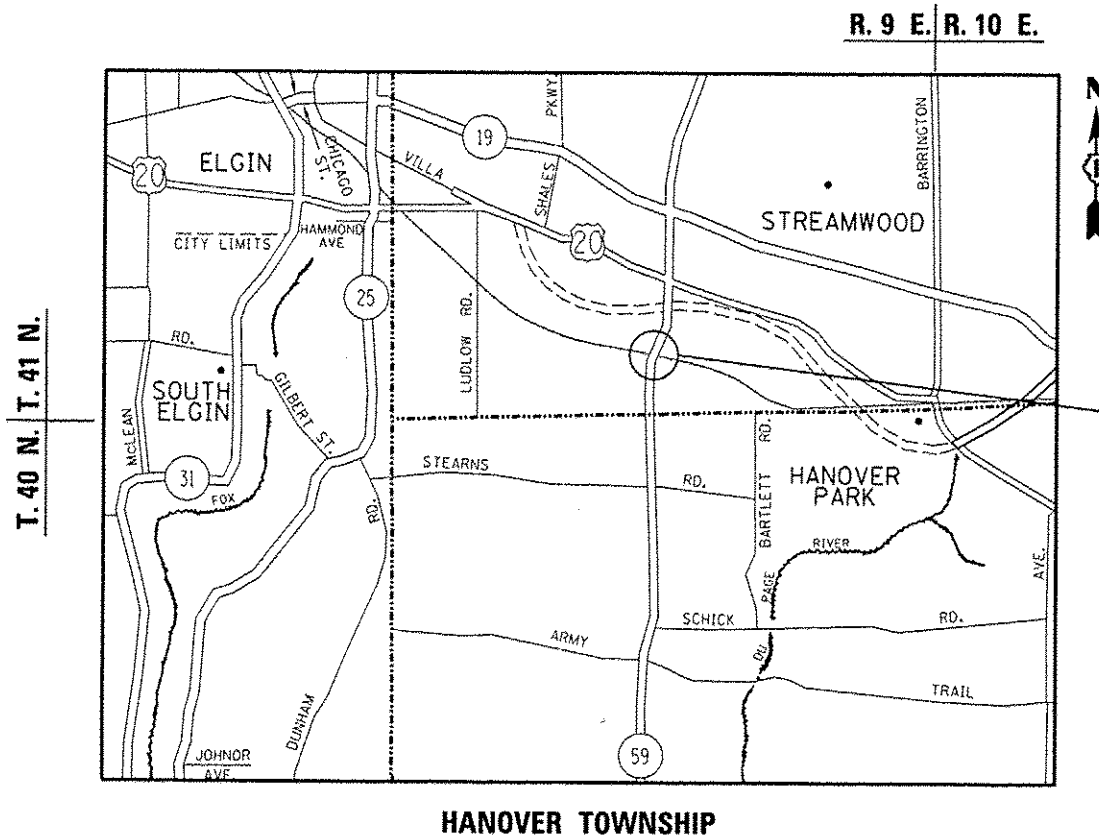
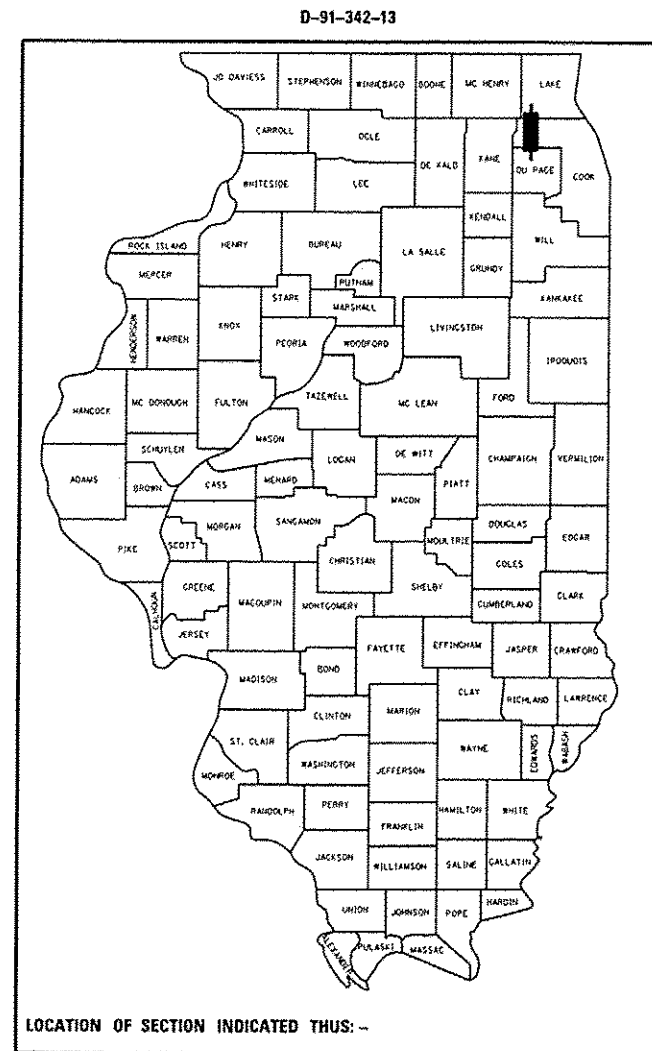
FOR INDEX OF SHEETS, SEE SHEET NO. 2

THE IMPROVEMENT IS LOCATED IN  
THE VILLAGE OF BARTLETT.

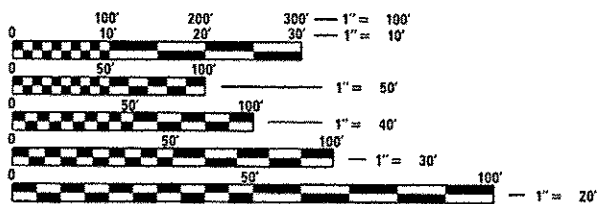
**TRAFFIC DATA**

ADT (2013) = 41,200

POSTED SPEED LIMIT = 45 MPH



IMPROVEMENT LOCATION  
SN 016-2606



FULL SIZE PLANS HAVE BEEN PREPARED USING STANDARD ENGINEERING SCALES. REDUCED SIZED PLANS WILL NOT CONFORM TO STANDARD SCALES. IN MAKING MEASUREMENTS ON REDUCED PLANS, THE ABOVE SCALES MAY BE USED.

J.U.L.I.E.  
JOINT UTILITY LOCATION INFORMATION FOR EXCAVATION  
1-800-892-0123  
OR 811

PROJECT ENGINEER J. ALAIN MIDY (847) 221-3056  
PROJECT MANAGER ISSAM RAYYAN (847) 705-4178

GROSS & NET LENGTH = 324.7 FT. = 0.617 MILE

CONTRACT NO. 60W59

STATE OF ILLINOIS  
DEPARTMENT OF TRANSPORTATION  
DIVISION OF HIGHWAYS

SUBMITTED *March 31 2014*

*John D. Baranzelli*  
DEPUTY DIRECTOR OF HIGHWAYS, REGION ENGINEER

*May 9 2014*  
*John D. Baranzelli* P.E.  
ENGINEER OF DESIGN AND ENVIRONMENT

*May 9 2014*  
*Osman* P.E.  
DIRECTOR OF HIGHWAYS, CHIEF ENGINEER

PRINTED BY THE AUTHORITY  
OF THE STATE OF ILLINOIS