

DECK AT EAST ABUTMENT

BILL OF MATERIALS


BAR	NO.	SIZE	LENGTH	SHAPE
o1(E)	6	#5	29'-5"	—
o2(E)	6	#5	22'-5"	—
o3(E)	6	#5	18'-2"	—
o4(E)	6	#5	34'-5"	—
c(E)	4	#4	7'-3"	—
d(E)	16	#4	3'-0"	L
o1(E)	8	#5	2'-8"	⌋
o2(E)	2	#5	4'-6"	C
o3(E)	2	#5	2'-6"	C
o4(E)	4	#5	4'-11"	C
REINFORCEMENT BARS (EPOXY COATED)		POUND	760	
CONCRETE REMOVAL		CU.YD.	4.9	
CONCRETE SUPERSTRUCTURE		CU.YD.	5.0	
BAR SPLICERS		EACH	12	
PREFORMED JOINT STRIP SEAL		FOOT	107	

DECK AT WEST ABUTMENT

BILL OF MATERIALS

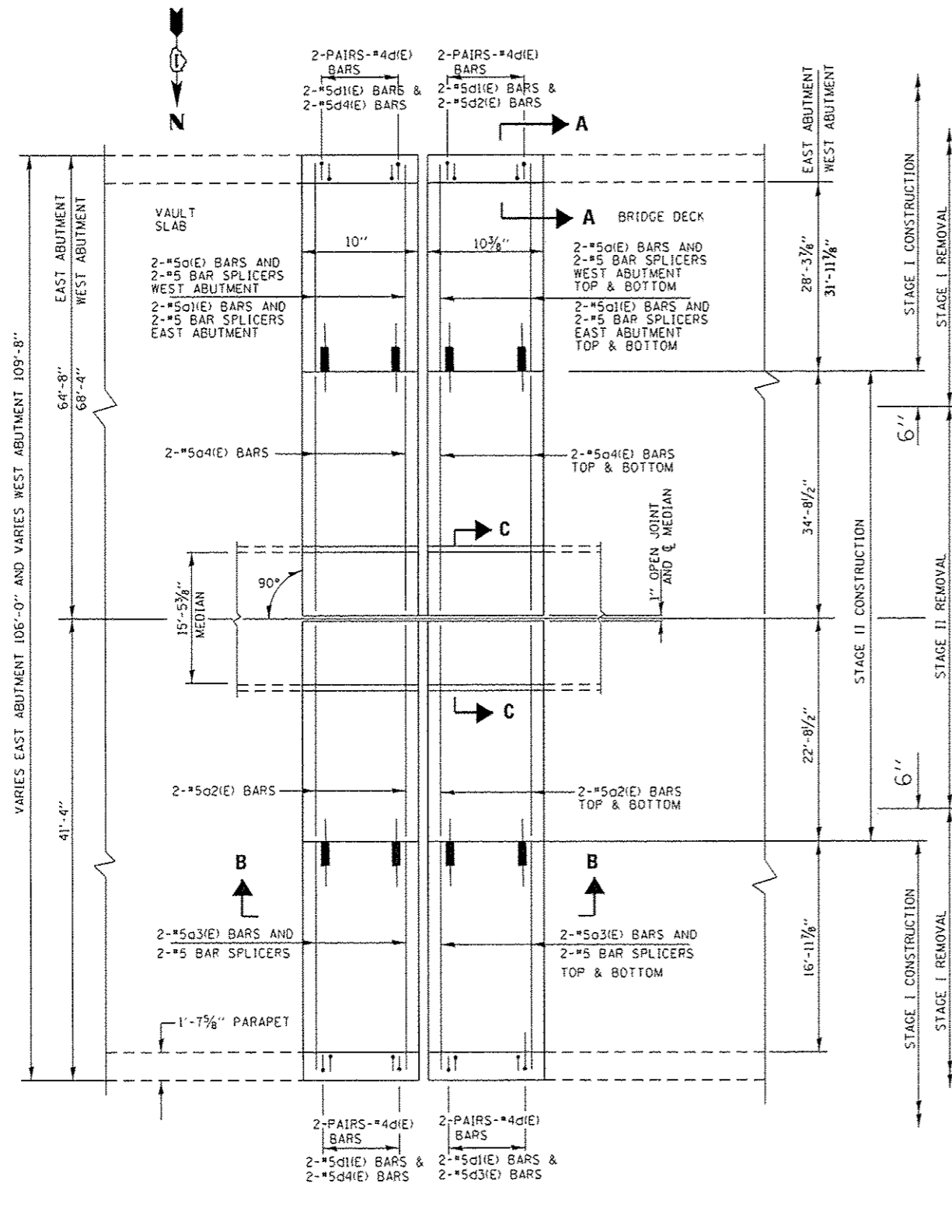
BAR	NO.	SIZE	LENGTH	SHAPE
o1(E)	6	#5	33'-2"	—
o2(E)	6	#5	22'-5"	—
o3(E)	6	#5	18'-2"	—
o4(E)	6	#5	34'-5"	—
c(E)	4	#4	7'-3"	—
d(E)	16	#4	3'-0"	L
o1(E)	8	#5	2'-8"	⌋
o2(E)	2	#5	4'-6"	C
o3(E)	2	#5	2'-6"	C
o4(E)	4	#5	4'-11"	C
REINFORCEMENT BARS (EPOXY COATED)		POUND	790	
CONCRETE REMOVAL		CU.YD.	5.1	
CONCRETE SUPERSTRUCTURE		CU.YD.	5.2	
BAR SPLICERS		EACH	12	
PREFORMED JOINT STRIP SEAL		FOOT	111	

LEGEND:

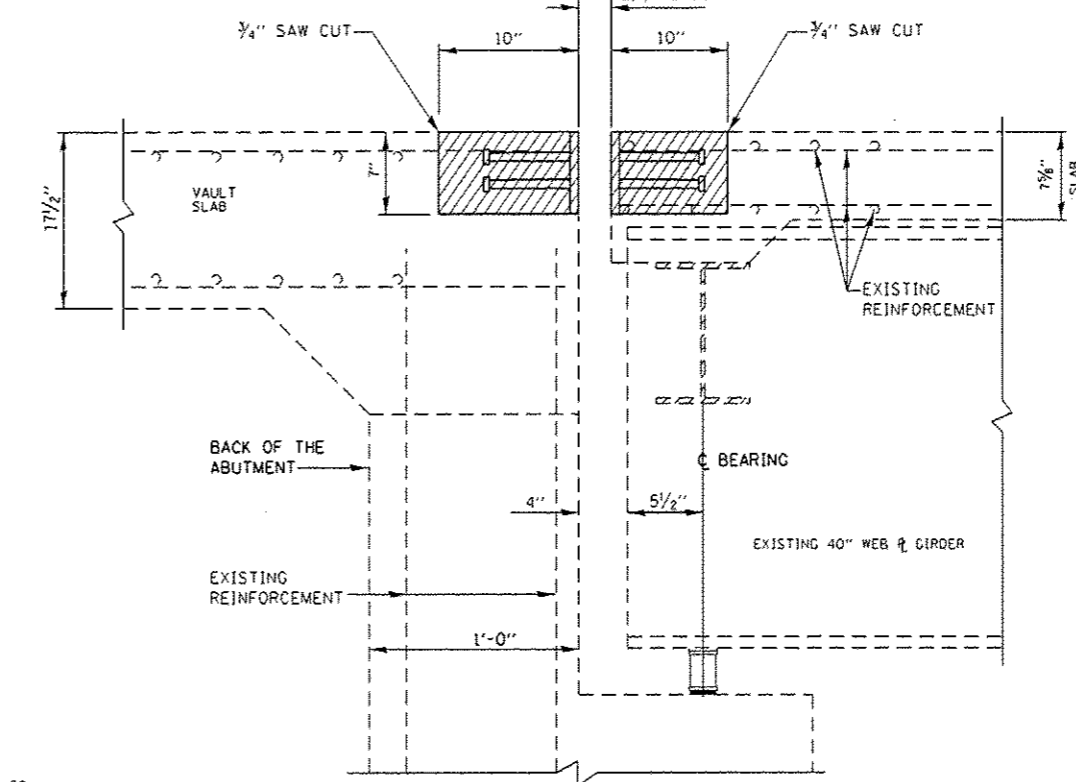
 HATCHED AREA INDICATES CONCRETE REMOVAL

NOTE:

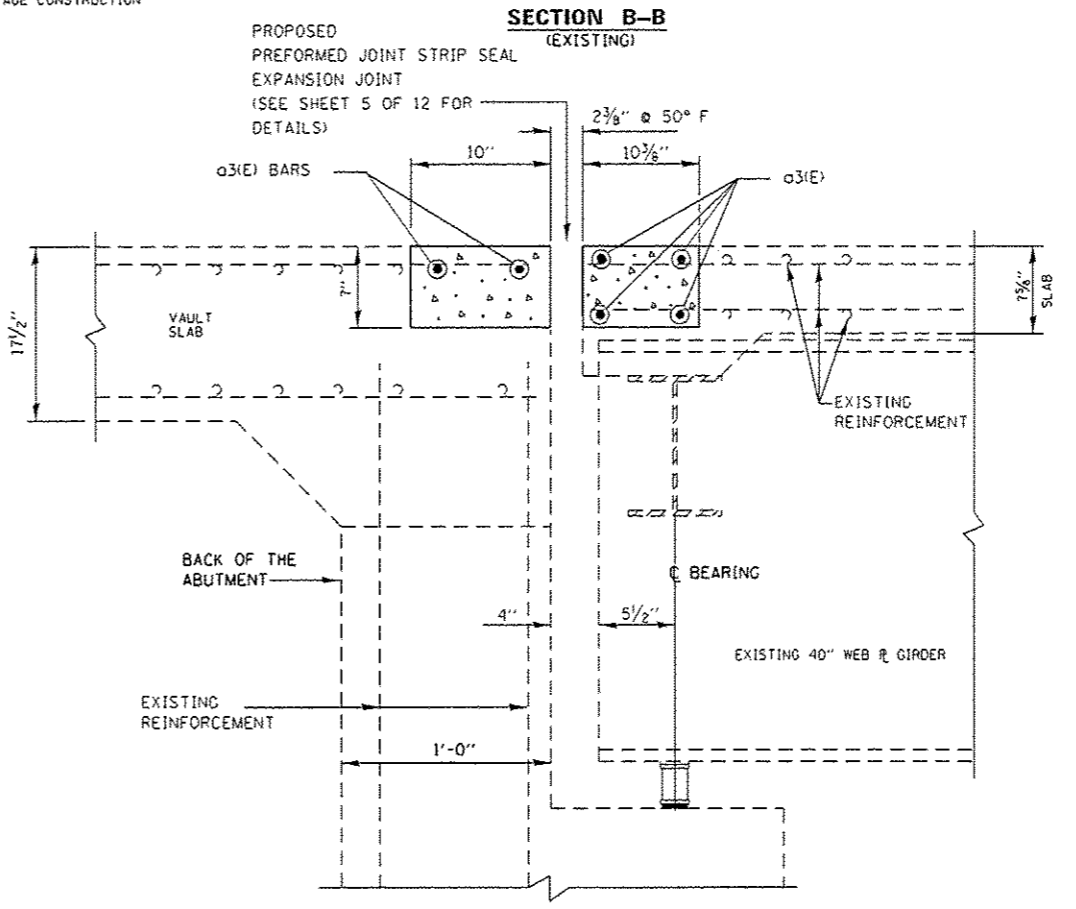
FOR SECTION A-A AND C-C SEE SHEET 3 OF 12



PLAN
EAST ABUTMENT SHOWN
(WEST ABUTMENT SIMILAR BY 180°)



SECTION B-B
(EXISTING)



SECTION B-B
(PROPOSED)

FILE NAME =	USER NAME = hardnstrbr	DESIGNED - MVT	REVISED - 4/28/14
o:\pwork\p\idoc\hardnstrbr\d0101671\016-0285.dgn		DRAWN - MVT	REVISED -
		CHECKED - RTB	REVISED -
		DATE -	REVISED -

STATE OF ILLINOIS
DEPARTMENT OF TRANSPORTATION

U.S. 30 (LINCOLN HIGHWAY) BRIDGE OVER I-57
TRANSVERSE EXPANSION JOINT DETAILS
S.N. 016-0285

F.A.P. RTE. 353	SECTION 0404-1004HB-BR	COUNTY COOK	TOTAL SHEETS 28	SHEET NO. 21
SCALE: SHEET 4 OF 12 SHEETS			CONTRACT NO. 60X21	
ILLINOIS FED. AID PROJECT				