

ALIGNMENT COORDINATES - BLODGETT ROAD			
	STATION	N	E
POT	41+04.78	1715797.32	1023611.10
PC	45+30.29	1716065.20	1023280.48
PI	50+88.53	1716416.63	1022846.75
PT	54+69.00	1716065.83	1022412.51
POT	58+52.10	1715825.10	1022114.50
PC	60+68.18	1715691.55	1021944.62
PI	61+48.83	171642.22	1021880.82
PT	62+29.00	1715605.77	1021425.06

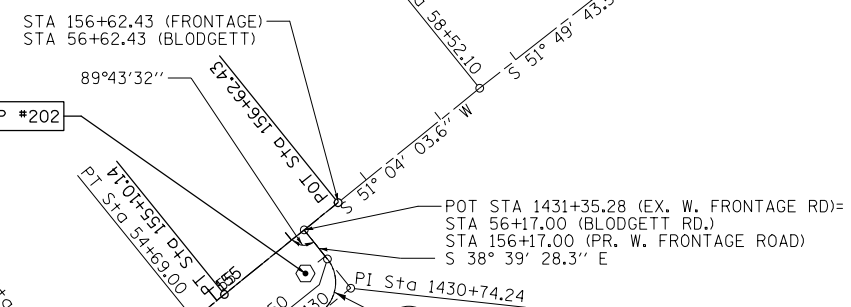
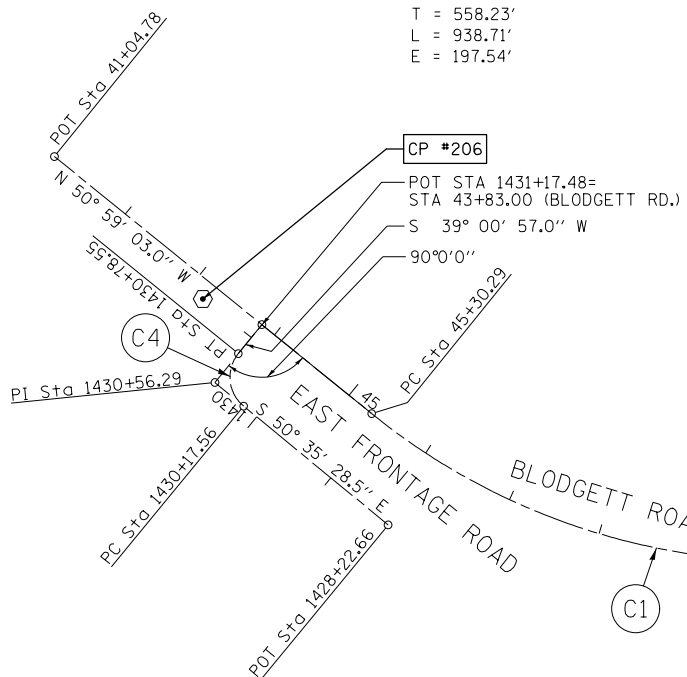
ALIGNMENT COORDINATES - FAI 55			
	STATION	N	E
POT	1405+36.07	1718383.23	1022855.33
POT	1438+79.50	1715039.80	1022857.86



MATCH LINE 1420+00

(C1)
 EXIST. CURVE C1 -
 BLODGETT ROAD
 PI STA. = 50+88.53
 $\Delta = 77^\circ 56' 53''$ (LT)
 D = 8° 18' 13"
 R = 690.00'
 T = 558.23'
 L = 938.71'
 E = 197.54'

(C2)
 EXIST. CURVE C2 -
 BLODGETT ROAD
 PI STA. = 61+48.83
 $\Delta = 10^\circ 50' 53''$ (RT)
 D = 6° 44' 45"
 R = 849.36'
 T = 80.65'
 L = 160.81'
 E = 3.82'
 P.C. STA. = 60+68.18
 P.T. STA. = 62+29.00



ALIGNMENT COORDINATES - PR W. FRONTAGE ROAD			
	STATION	N	E
PC	146+84.04	1716757.19	1022738.59
PI	147+84.84	1716653.39	1022738.47
PT	148+90.09	1716554.22	1022707.83
PC	149+50.06	1716496.92	1022690.12
PI	152+38.56	1716221.28	1022604.94
PT	155+10.14	1716039.99	1022380.52
POT	156+62.43	1715944.29	1022262.05

ALIGNMENT COORDINATES - EX. W. FRONTAGE RD			
	STATION	N	E
POT	1420+43.26	1716874.46	1022738.22
PC	1421+60.64	1716757.19	1022738.59
PI	1424+90.52	1716427.20	1022738.22
PT	1430+96.50	1716003.11	1022273.16
PC	1430+35.35	1716057.86	1022279.17
PI	1430+74.24	1716033.48	1022248.86
PT	1430+96.50	1716003.11	1022273.16
POT	1431+35.28	1715972.83	1022297.38

(C4)
 EXIST. CURVE C4 - EAST FRONTAGE ROAD
 PI STA. = 1430+56.29
 $\Delta = 89^\circ 36' 25''$ (RT)
 D = 146° 54' 44"
 R = 39.00'
 T = 38.73'
 L = 60.99'
 E = 15.97'
 P.C. STA. = 1430+17.56
 P.T. STA. = 1430+78.55

(C6)
 EXIST. CURVE C6
 PI STA. = 1424+90.52
 $\Delta = 51^\circ 07' 06''$ (RT)
 D = 8° 18' 13"
 R = 690.00'
 T = 329.99'
 L = 615.61'
 E = 74.85'
 e = ----
 T.R. = ----
 S.E. RUN = ----
 P.C. STA. = 1421+60.54
 P.T. STA. = 1427+76.14

(C3)
 EXIST. CURVE C3
 PI STA. = 1430+74.24
 $\Delta = 89^\circ 50' 21''$ (LT)
 D = 146° 54' 44"
 R = 39.00'
 T = 38.89'
 L = 61.15'
 E = 16.08'
 e = ----
 T.R. = ----
 S.E. RUN = ----
 P.C. STA. = 1430+35.35
 P.T. STA. = 1430+96.50

PROP. CURVE WFR1
 PI STA. = 152+38.56
 $\Delta = 33^\circ 53' 41''$ (RT)
 D = 6° 03' 07"
 R = 946.75'
 T = 288.50'
 L = 560.07'
 E = 42.98'
 e = 0.07'/'
 T.R. = 33.30'
 S.E. RUN = 155.40'
 P.C. STA = 149+50.06
 P.T. STA = 155+10.14

PROP. CURVE WFR2
 PI STA. = 147+87.84
 $\Delta = 17^\circ 06' 35''$ (RT)
 D = 8° 18' 13"
 R = 690.00'
 T = 103.80'
 L = 206.05'
 E = 7.76'
 e = 0.08'/'
 T.R. = 33.30'
 S.E. RUN = 177.60'
 P.C. STA = 146+84.04
 P.T. STA = 148+90.09

ALIGNMENT COORDINATES - EAST FRONTAGE ROAD			
	STATION	N	E
POT	1428+22.66	1716181.14	1023263.31
PC	1430+17.56	1716057.41	1023413.89
PI	1430+56.29	1716032.82	1023443.82
PT	1430+78.55	1716002.72	1023419.43
POT	1431+17.48	1715972.47	1023394.93

MATCH LINE 1420+00

FILE NAME = F:\3-1319-Blodgett\Drawings\CADD\Sheets\10160636-sh-t-A1B.dgn



USER NAME = tborges	DESIGNED - MMO	REVISED -
PLOT SCALE = 200.000000' / 1"	DRAWN - BL	REVISED -
PLOT DATE = 3/31/2014	CHECKED - LSA	REVISED -
	DATE - 9/25/2013	REVISED -

STATE OF ILLINOIS
 DEPARTMENT OF TRANSPORTATION

ALIGNMENT, TIES & BENCHMARKS			
F.A.I. RTE.	SECTION	COUNTY	TOTAL SHEETS
55	99-2HB-31-3	WILL	87
			SHEET NO. 23
CONTRACT NO. 60X60			
SCALE: 1" = 100'			
SHEET 3 OF 4 SHEETS		STA.	TO STA.

ILLINOIS	FED. AID PROJECT
----------	------------------