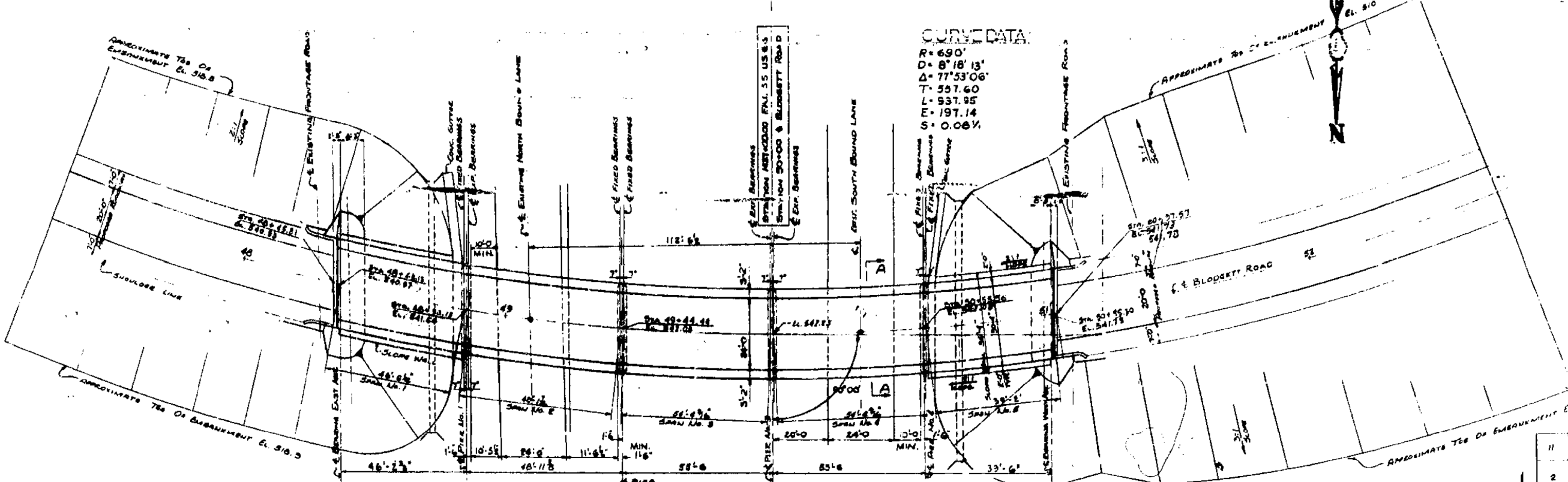
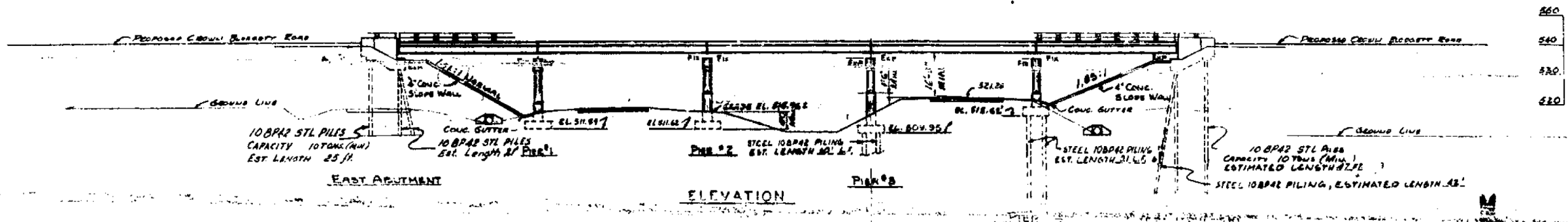
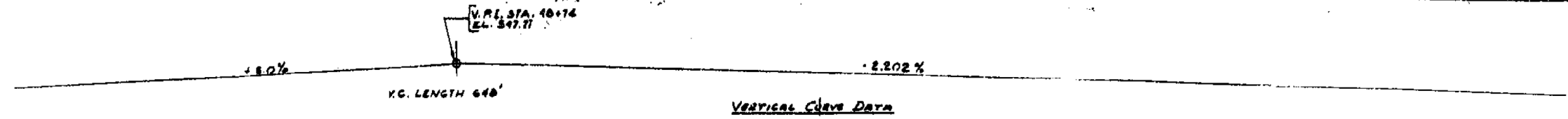
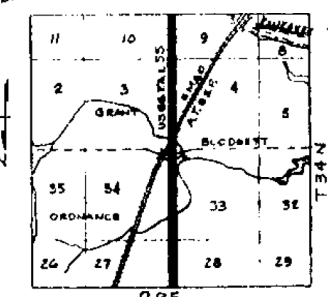
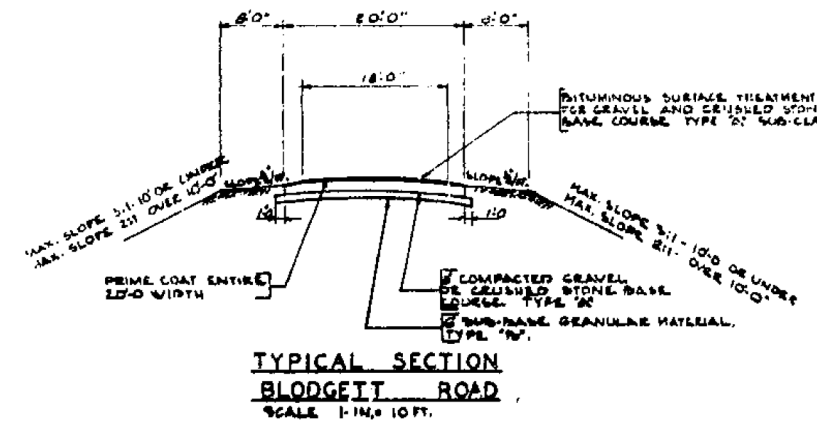
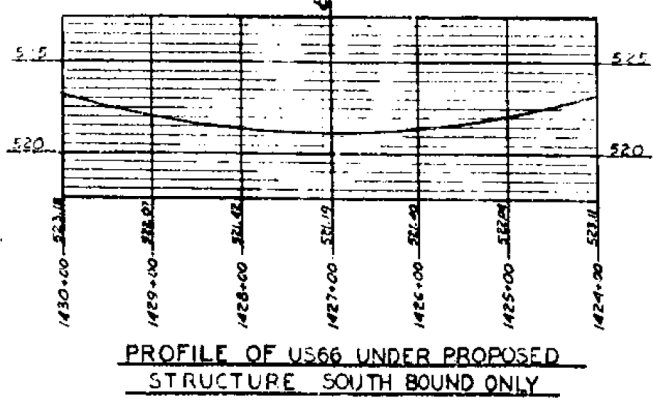


F.A.I. SHEET NO.	DISTRICT	COUNTY	TOTAL SHEETS	SHEET NO.
55	99-2HB	WILL	57	10
FEDERAL ROAD DISTRICT NO.		SECTION	TOTAL	



EXISTING STRUCTURAL PLAN SHEETS
 "FOR REFERENCE USE ONLY"



CONSOER, TOWNSEND & ASSOCIATES
 CONSULTING ENGINEERS
 CHICAGO, ILLINOIS

ILLINOIS DIVISION OF HIGHWAYS
 BLODGETT ROAD OVER FAI-5
 US 66 SECTION J931B-3
 WILL COUNTY

PLAN & ELEVATION

DESIGNED	DRAWN	CHECKED	REVIEWED	DATE	REVISED
N.L.A.		F.E.D.	H.S.M.	5-27-59	

F.A.I. R.T.E.	SECTION	COUNTY	TOTAL SHEETS	SHEET NO.
55	99-2HB-31-3	WILL	87	77

CONTRACT NO. 60X60
 ILLINOIS FED. AID PROJECT

BLOOM COMPANIES, LLC
 Infrastructure Development and Engineering
 600 W. Fulton Street, Suite 701 • Chicago, IL 60661
 Phone: (312) 676-6600 Fax: (312) 676-6600

USER NAME = tborges	DESIGNED - NA	REVISED -
PLOT SCALE = 2.0000 "/>	DRAWN - NA	REVISED -
PLOT DATE = 3/31/2014	CHECKED - NA	REVISED -
	DATE - NA	REVISED -

STATE OF ILLINOIS
 DEPARTMENT OF TRANSPORTATION

EXISTING STRUCTURAL PLAN SHEETS
 SN 099-0182
 SCALE: N.T.S. SHEET OF SHEETS STA. TO STA.

FILE NAME = FAI-2-1319-Bloedgett\Drawings\CADD\Struct\10160636-11-E-PI-plan.dgn