



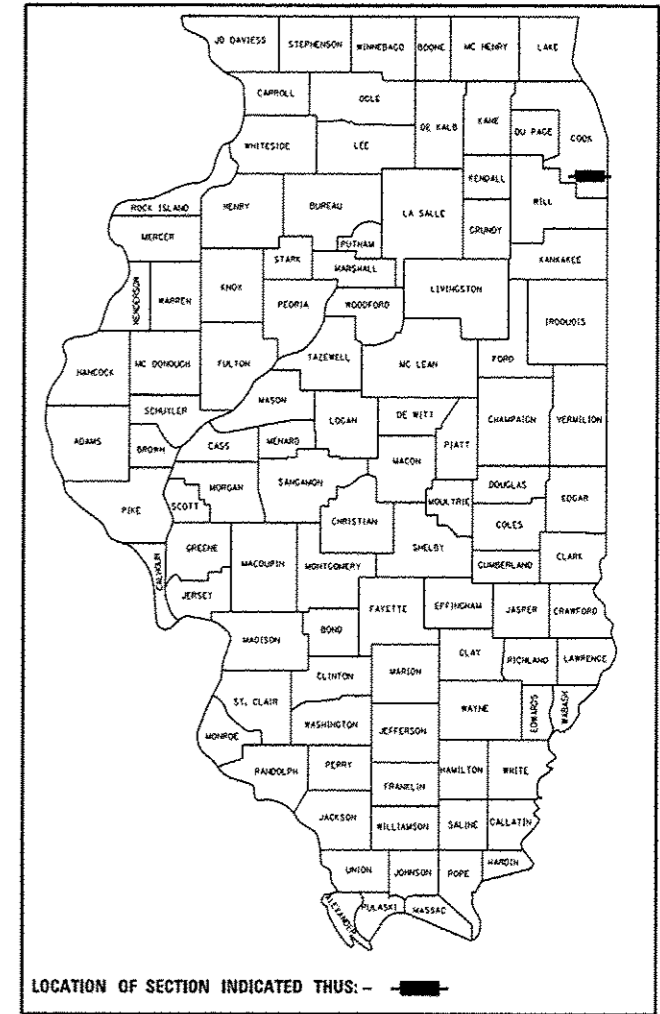
STATE OF ILLINOIS  
DEPARTMENT OF TRANSPORTATION  
DIVISION OF HIGHWAYS

**PROPOSED  
HIGHWAY PLANS**

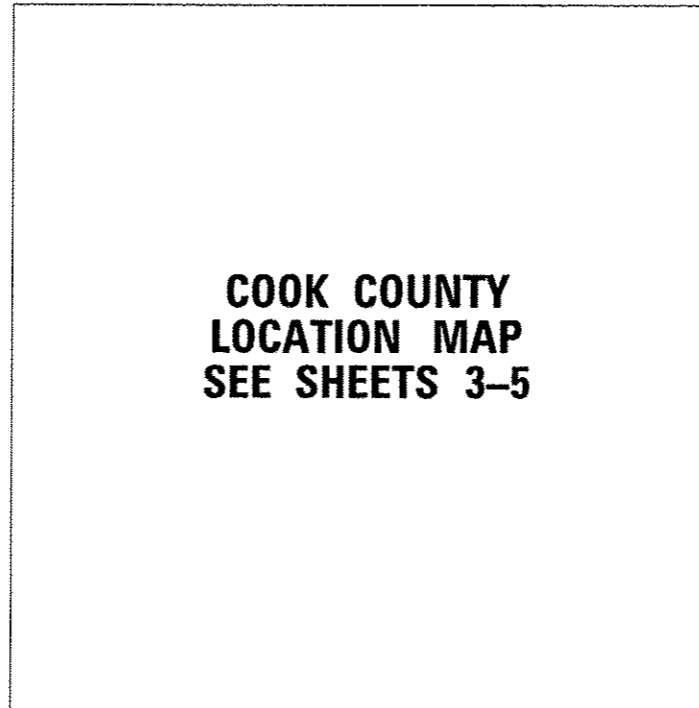
**VARIOUS LOCATIONS IN NORTH COOK COUNTY #8  
LIGHT EMITTING DIODE (LED) INSTALLATION  
SECTION 2014-007TS  
COOK COUNTY**

F.A. RTE.	SECTION	COUNTY	TOTAL SHEETS	SHEET NO.
	2014-007TS	COOK	88	1
		ILLINOIS	CONTRACT NO. 60X82	

D-91-222-14



C-91-222-14

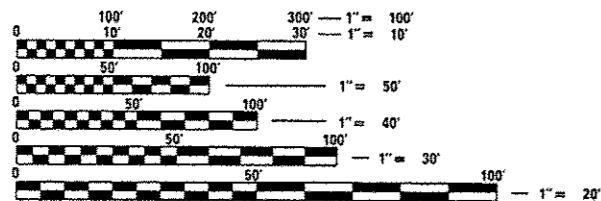


FOR INDEX OF SHEETS, SEE SHEET NO. 2

	BRIAN K. SCIFERS REGISTRATION NO. 062-054567 DATE 3/24/2014 EXPIRES 11-30-2015

**STANDARDS**

- 701006-05 OFF-ROAD OPERATIONS 2L, 2W, 15' (4.5 m) TO 24" (600 mm) FROM PAVEMENT EDGE
- 701101-04 OFF-ROAD OPERATIONS MULTILANE, 15' (4.5 m) TO 24" (600 mm) FROM PAVEMENT EDGE
- 701701-09 URBAN LANE CLOSURE MULTILANE INTERSECTION
- 701901-03 TRAFFIC CONTROL DEVICES
- 720001-01 SIGN PANEL MOUNTING DETAIL
- 720006-04 SIGN PANEL ERECTION DETAILS
- 857001-01 STANDARD PHASE DESIGNATION DIAGRAMS AND PHASE SEQUENCES
- 862001-01 UNINTERRUPTABLE POWER SUPPLY (UPS)
- 880006-01 TRAFFIC SIGNAL MOUNTING DETAILS



FULL SIZE PLANS HAVE BEEN PREPARED USING STANDARD ENGINEERING SCALES. REDUCED SIZED PLANS WILL NOT CONFORM TO STANDARD SCALES. IN MAKING MEASUREMENTS ON REDUCED PLANS, THE ABOVE SCALES MAY BE USED.

J.U.L.I.E.  
JOINT UTILITY LOCATION INFORMATION FOR EXCAVATION  
1-800-892-0123  
OR 811

PROJECT ENGINEER: SUDUD MAHMOUD  
PROJECT MANAGER: DARYLE DREW

CONTRACT NO. 60X82

STATE OF ILLINOIS  
DEPARTMENT OF TRANSPORTATION  
DIVISION OF HIGHWAYS

SUBMITTED March 29, 2014

John F. Johnson, PE  
DEPUTY DIRECTOR OF HIGHWAYS, REGION ENGINEER

May 9, 2014  
John D. Baranzolo, PE  
ENGINEER OF DESIGN AND ENVIRONMENT

May 9, 2014  
Omur Osman, PE  
DIRECTOR OF HIGHWAYS, CHIEF ENGINEER

**PRINTED BY THE AUTHORITY  
OF THE STATE OF ILLINOIS**