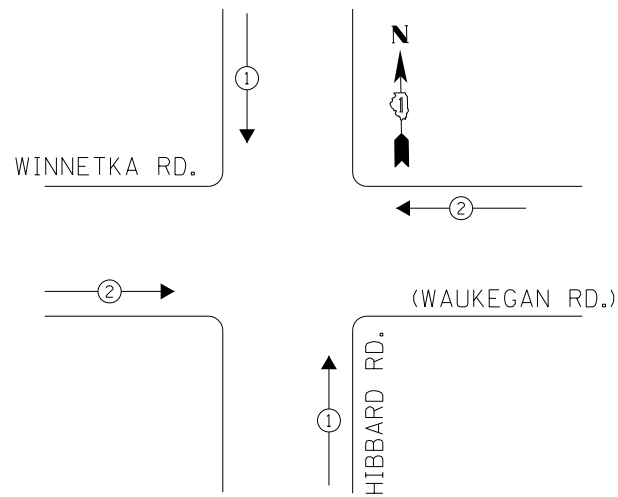


EXISTING CONTROLLER SEQUENCE



PHASE DESIGNATION DIAGRAM

LEGEND

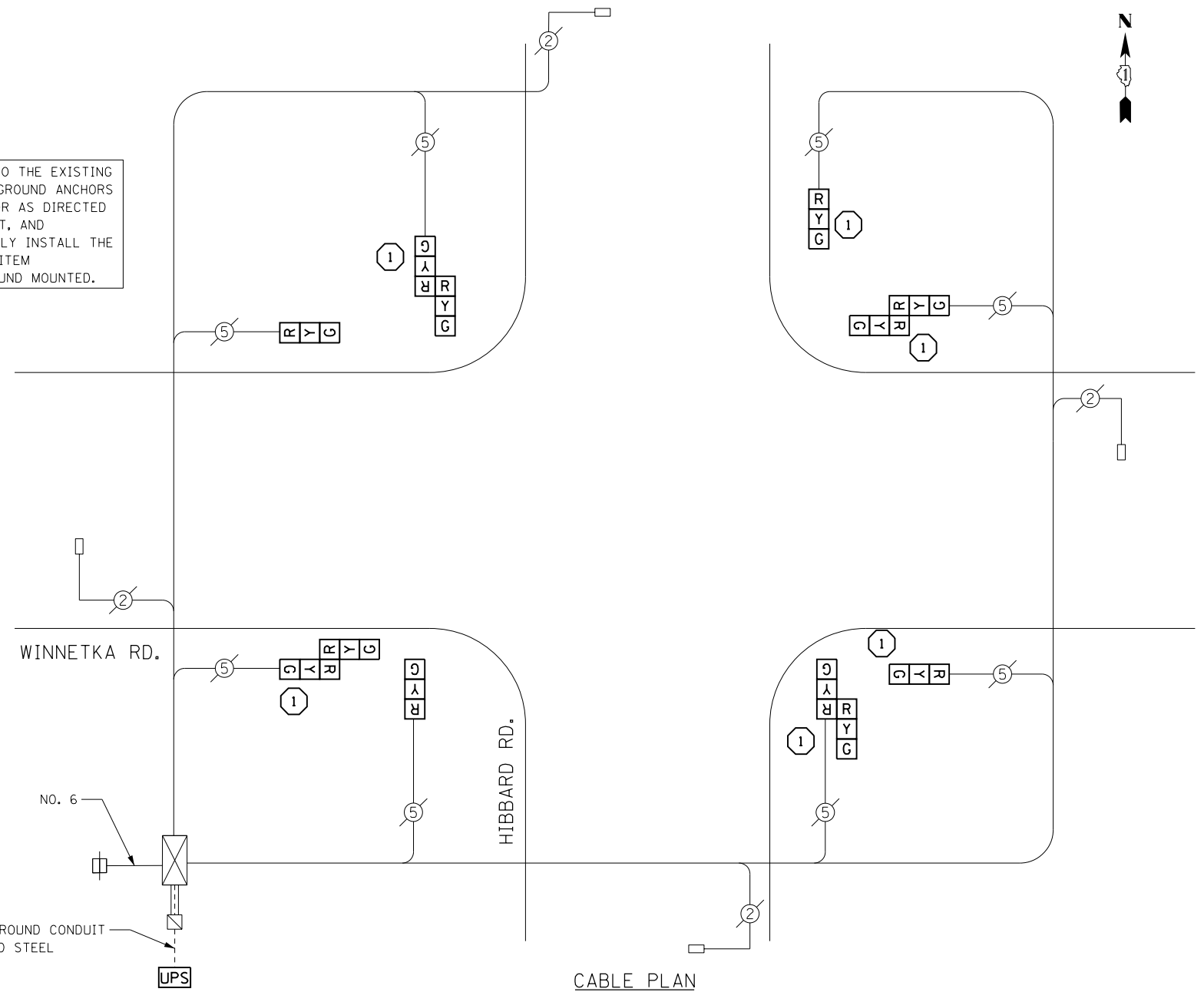
- ← ⊙ → DUAL ENTRY PHASE
- ← ⊙ - - - → PEDESTRIAN PHASE
- NUMBER REFERS TO ASSOCIATED PHASE

THE UPS SHALL BE INSTALLED NEXT TO THE EXISTING CONTROLLER CABINET USING HELICAL GROUND ANCHORS DUE TO THE PHYSICAL CONSTRAINTS OR AS DIRECTED BY THE ENGINEER. THIS WORK, CONDUIT, AND ELECTRICAL CABLE NEEDED TO PROPERLY INSTALL THE UPS SHALL BE INCLUDED IN THE PAY ITEM UNINTERRUPTIBLE POWER SUPPLY, GROUND MOUNTED.

REMOVAL OF EXISTING TRAFFIC SIGNAL EQUIPMENT

THE FOLLOWING ITEMS SHALL BE REMOVED BY THE CONTRACTOR AND SHALL BE DISPOSED OF BY THEM OUTSIDE THE RIGHT-OF-WAY AT THEIR EXPENSE. THE SALVAGE VALUE OF THE REMOVED EQUIPMENT SHALL BE REFLECTED IN THE CONTRACT BID PRICE.

- 6 EACH TRAFFIC SIGNAL POST
- 4 EACH SIGNAL HEAD, 1-FACE, 3-SECTION
- 4 EACH SIGNAL HEAD, 2-FACE, 3-SECTION



CABLE PLAN

I. D. O. T.
TRAFFIC SIGNAL INSTALLATION
ELECTRICAL SERVICE REQUIREMENTS

| TYPE | NO. LAMPS | WATTAGE INCAND. | WATTAGE LED | %OPERATION | TOTAL WATTAGE |
|----------------|-----------|-----------------|-------------|------------|---------------|
| SIGNAL (RED) | 12 | - | 17 | 0.50 | 102.0 |
| (YELLOW) | 12 | - | 25 | 0.25 | 75.0 |
| (GREEN) | 12 | - | 15 | 0.25 | 45.0 |
| ARROW | - | - | 12 | 0.10 | - |
| PED. SIGNAL | - | - | 25 | 1.00 | - |
| CONTROLLER | 1 | 100 | - | 1.00 | 100.0 |
| ILLUM. SIGN | - | - | 25 | 0.50 | - |
| VIDEO SYSTEM | - | 150 | - | 1.00 | - |
| BATTERY BACKUP | 1 | 25 | - | 1.00 | 25.0 |
| LUMINAIRE | - | 250 | - | 0.50 | - |
| FLASHER | - | - | 25 | 0.50 | - |
| TOTAL = | | | | | 347.0 |

ENERGY COSTS-

BILLED TO: IDOT DISTRICT 1
201 WEST CENTER COURT
SCHAUMBURG, IL 60196-1096

ENERGY SUPPLY-

CONTACT TERRI BLECK
PHONE 847-816-5239
COMMONWEALTH EDISON

SCHEDULE OF QUANTITIES

| ITEMS | UNIT | QUANTITY |
|--|------|----------|
| MAINTENANCE OF EXISTING TRAFFIC SIGNAL INSTALLATION | EACH | 1 |
| TRAFFIC SIGNAL POST, GALVANIZED STEEL 14 FT. | EACH | 6 |
| SIGNAL HEAD, LED, 1-FACE, 3-SECTION, BRACKET MOUNTED | EACH | 4 |
| SIGNAL HEAD, LED, 2-FACE, 3-SECTION, BRACKET MOUNTED | EACH | 4 |
| MODIFY EXISTING CONTROLLER CABINET | EACH | 1 |
| REMOVE EXISTING TRAFFIC SIGNAL EQUIPMENT | EACH | 1 |
| UNINTERRUPTIBLE POWER SUPPLY, GROUND MOUNTED | EACH | 1 |

CONSTRUCTION NOTES

- 1 THE CONTRACTOR SHALL REPLACE THE EXISTING TRAFFIC SIGNAL POST WITH THE PROPOSED TRAFFIC SIGNAL POST, 14 FT. AND ATTACH THE PROPOSED POST TO THE EXISTING FOUNDATION.

TS 14485
NORTHFIELD

| | | | |
|--------------------------------------|-----------------------------|-------------------|-----------|
| FILE NAME = D:\60X82-sht-TS14485.dgn | USER NAME = SJohnson | DESIGNED - PHL | REVISED - |
| Default | PLOT SCALE = 48.0000' / in. | DRAWN - PHL | REVISED - |
| | PLOT DATE = 3/21/2014 | CHECKED - BKS | REVISED - |
| | | DATE - 03/09/2014 | REVISED - |

STATE OF ILLINOIS
DEPARTMENT OF TRANSPORTATION

WINNETKA RD. AT HIBBARD RD. - CABLE PLAN
SCHEDULE OF QUANTITIES, PHASE DESIG. DIAGRAM & EVP SEQUENCE

SCALE: SHEET OF SHEETS STA. TO STA.

| F.A. RTE. | SECTION | COUNTY | TOTAL SHEETS | SHEET NO. |
|---------------------------|------------|--------|--------------|-----------|
| | 2014-007TS | COOK | 88 | 39 |
| CONTRACT NO. 60X82 | | | | |
| ILLINOIS FED. AID PROJECT | | | | |