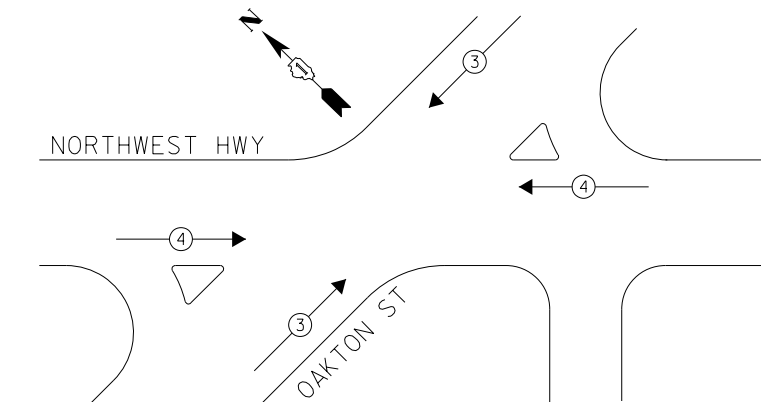
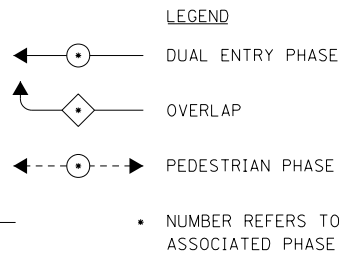


PHASE DESIGNATION DIAGRAM



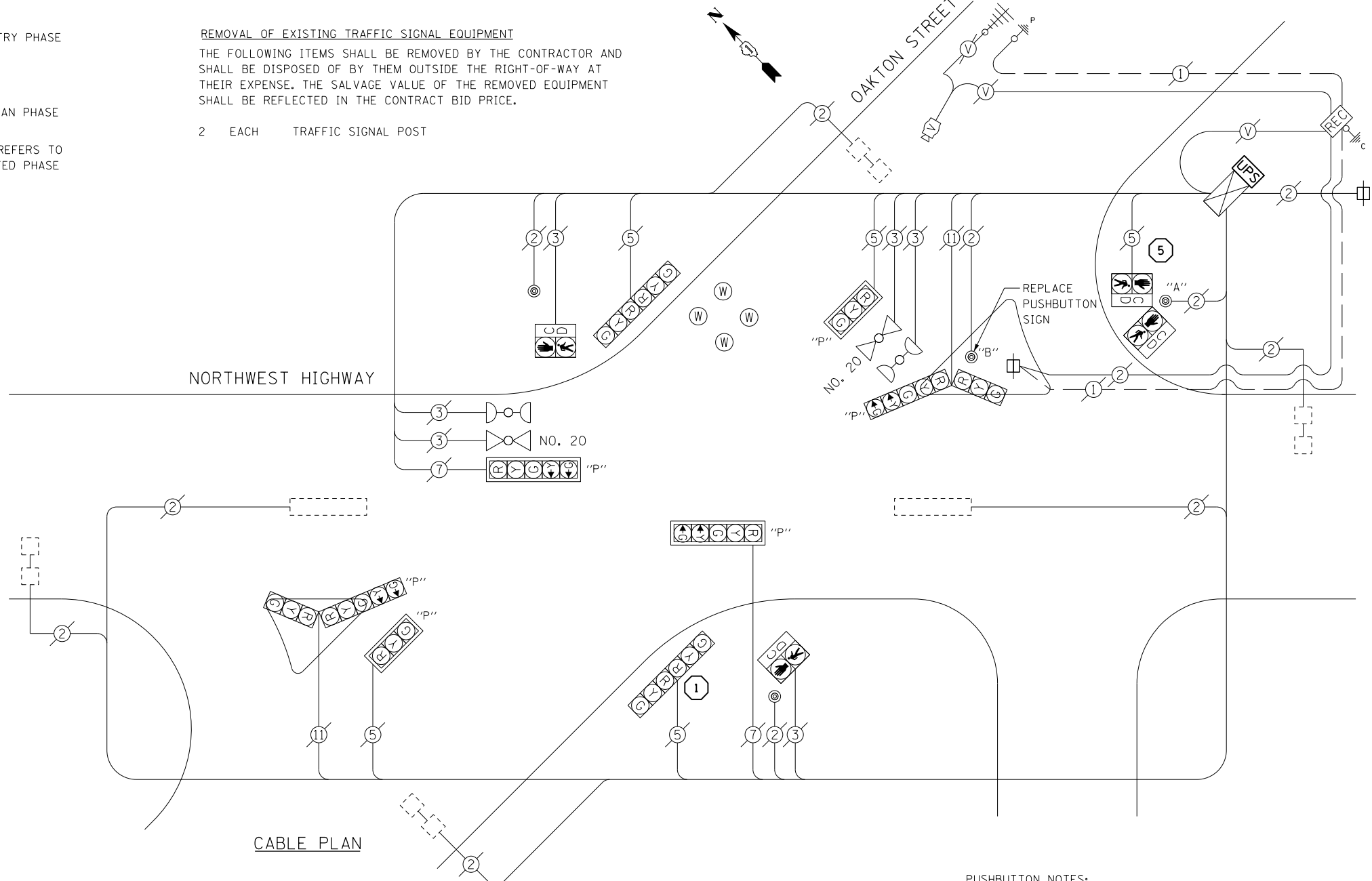
EXISTING EMERGENCY VEHICLE PREEMPTION SEQUENCE

EMERGENCY VEHICLE PREEMPTORS		
EMERGENCY VEHICLE PREEMPTOR	3	4
MOVEMENT	↘ ↗	↓ ↑



REMOVAL OF EXISTING TRAFFIC SIGNAL EQUIPMENT
 THE FOLLOWING ITEMS SHALL BE REMOVED BY THE CONTRACTOR AND SHALL BE DISPOSED OF BY THEM OUTSIDE THE RIGHT-OF-WAY AT THEIR EXPENSE. THE SALVAGE VALUE OF THE REMOVED EQUIPMENT SHALL BE REFLECTED IN THE CONTRACT BID PRICE.

2 EACH TRAFFIC SIGNAL POST



CABLE PLAN

CONSTRUCTION NOTE:
 CONTRACTOR SHALL REMOVE AND REPLACE THE INDICATED EXISTING PEDESTRIAN PUSHBUTTON SIGN WITH MUTCD R10-3e SIGN. ALL NECESSARY MOUNTING HARDWARE SHALL BE INCLUDED IN THE COST OF SIGN REPLACEMENT. REMOVED SIGN PANEL SHALL BE DISPOSED OF BY CONTRACTOR AT THEIR EXPENSE.

PUSHBUTTON NOTES:
 PUSHBUTTON "A" SHALL PLACE A CALL IN PHASES 2 AND 4
 PUSHBUTTON "B" SHALL PLACE A CALL IN PHASES 2 AND 8

**I. D. O. T.
 TRAFFIC SIGNAL INSTALLATION
 ELECTRICAL SERVICE REQUIREMENTS**

TYPE	NO. LAMPS	WATTAGE INCAND.	WATTAGE LED	%OPERATION	TOTAL WATTAGE
SIGNAL (RED)	12	-	17	0.50	102.0
(YELLOW)	12	-	25	0.25	75.0
(GREEN)	12	-	15	0.25	45.0
ARROW	8	-	12	0.10	9.6
PED. SIGNAL	4	-	25	1.00	100.0
CONTROLLER	1	100	-	1.00	100.0
ILLUM. SIGN	-	-	-	0.50	-
VIDEO SYSTEM	-	150	-	1.00	-
BATTERY BACKUP	1	25	-	1.00	25.0
LUMINAIRE	-	-	-	0.50	-
FLASHER	-	-	-	0.50	-
TOTAL =					456.6

SCHEDULE OF QUANTITIES

ITEMS	UNIT	QUANTITY
SIGN PANEL - TYPE 1	SQ FT	1
REMOVE SIGN PANEL - TYPE 1	SQ FT	1
MAINTENANCE OF EXISTING TRAFFIC SIGNAL INSTALLATION	EACH	1
TRAFFIC SIGNAL POST, GALVANIZED STEEL 10 FT.	EACH	1
TRAFFIC SIGNAL POST, GALVANIZED STEEL 14 FT.	EACH	1
RELOCATE EXISTING SIGNAL HEAD	EACH	2
RELOCATE EXISTING PEDESTRIAN SIGNAL HEAD	EACH	2
RELOCATE EXISTING PEDESTRIAN PUSH-BUTTON	EACH	1
MODIFY EXISTING CONTROLLER CABINET	EACH	1
REMOVE EXISTING TRAFFIC SIGNAL EQUIPMENT	EACH	1
UNINTERRUPTABLE POWER SUPPLY, SPECIAL	EACH	1

CONSTRUCTION NOTES

- 1 THE CONTRACTOR SHALL REPLACE THE EXISTING TRAFFIC SIGNAL POST WITH THE PROPOSED TRAFFIC SIGNAL POST, 14 FT. AND ATTACH THE PROPOSED POST TO THE EXISTING FOUNDATION.
- 5 THE CONTRACTOR SHALL REPLACE THE EXISTING TRAFFIC SIGNAL POST WITH THE PROPOSED TRAFFIC SIGNAL POST, 10 FT. AND ATTACH THE PROPOSED POST TO THE EXISTING FOUNDATION.

ENERGY COSTS- BILLED TO: IDOT DISTRICT 1
 201 WEST CENTER COURT
 SCHAUMBURG, IL 60196-1096

ENERGY SUPPLY- CONTACT: TERRI BLECK
 PHONE: 847-816-5239
 COMMONWEALTH EDISON

TS 5505
 PARK RIDGE