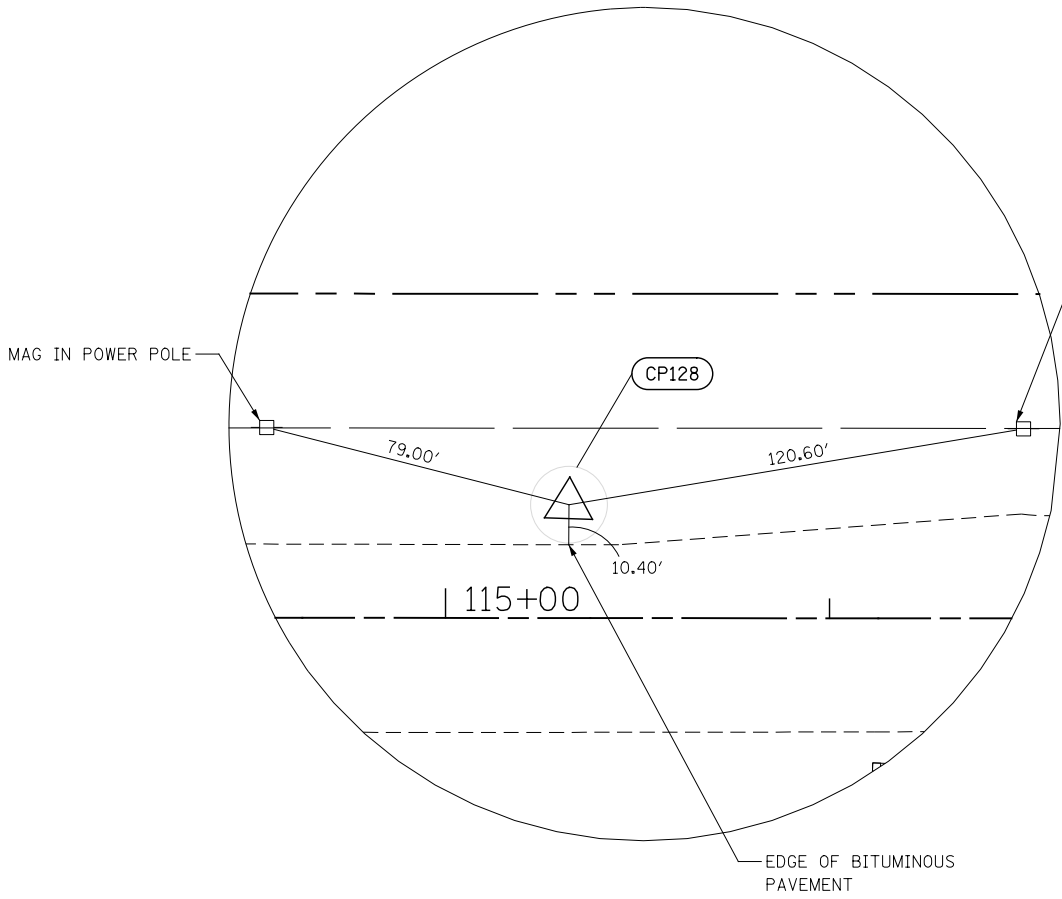
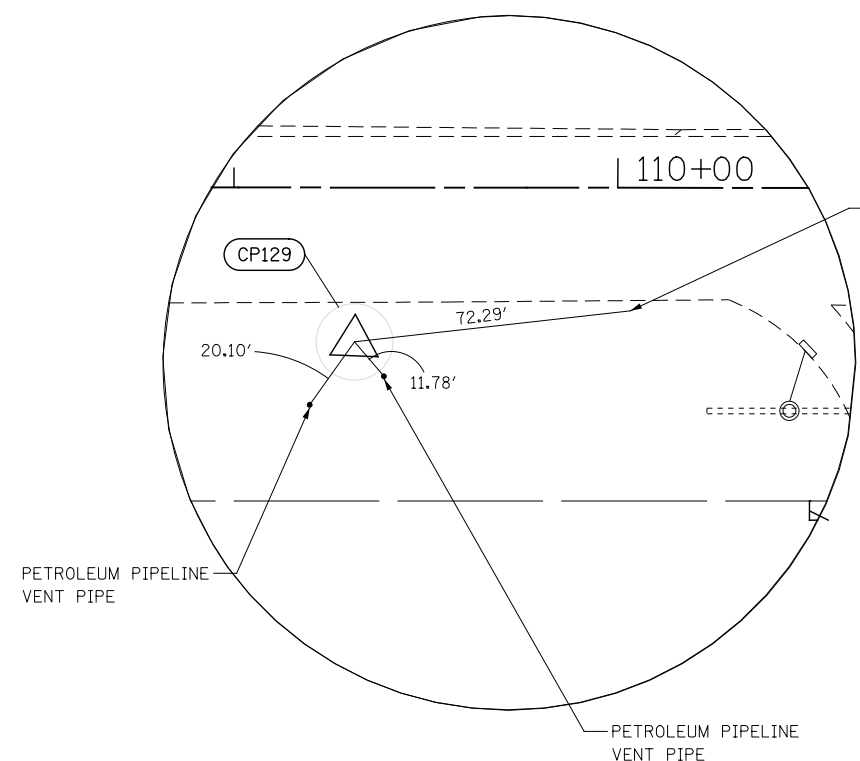


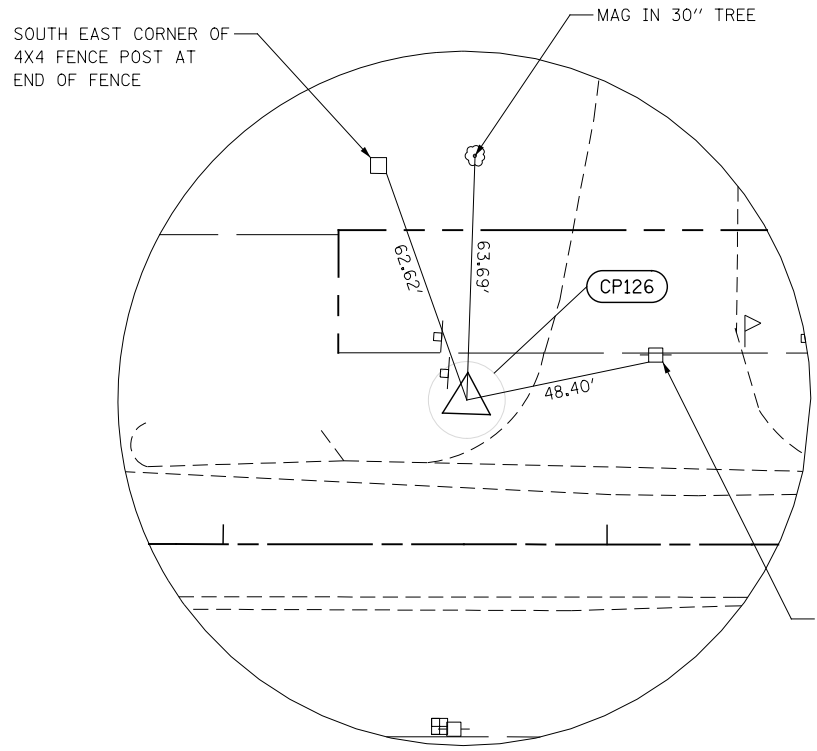
**CONTROL POINT 130**  
 STA. 105+71.48 21.44' RT  
 CAPPED IRON ROD  
 N 1796666.542  
 E 1082807.223  
 ELEV. = 787.95



**CONTROL POINT 128**  
 STA. 115+32.08 29.51' LT  
 CAPPED IRON ROD  
 N 1796750.588  
 E 1083763.727  
 ELEV. = 779.80



**CONTROL POINT 129**  
 STA. 109+31.43 40.21' RT  
 CAPPED IRON ROD  
 N 1796660.325  
 E 1083165.821  
 ELEV. = 787.74



**CONTROL POINT 126**  
 STA. 127+63.43 37.57' LT  
 CAPPED IRON ROD  
 N 1796800.883  
 E 1084994.087  
 ELEV. = 772.90

FILE NAME = D:\6092-shr-ATB-15-11.dgn

USER NAME = malberts	DESIGNED MEA	REVISED -
	DRAWN MEA	REVISED -
PLOT SCALE = 1:50.0003	CHECKED PJO	REVISED -
PLOT DATE = 4/1/2014	DATE 3/11/2014	REVISED -

**STATE OF ILLINOIS  
 DEPARTMENT OF TRANSPORTATION**

**ALIGNMENT, BENCHMARKS, AND TIES**  
 SCALE: AS SHOWN SHEET NO. 15 OF 20 SHEETS STA. TO STA.

F.A.P. RTE.	SECTION	COUNTY	TOTAL SHEETS	SHEET NO.
351	536-R-1	WILL/COOK	207	28
CONTRACT NO. 60X92			ILLINOIS FED. AID PROJECT	