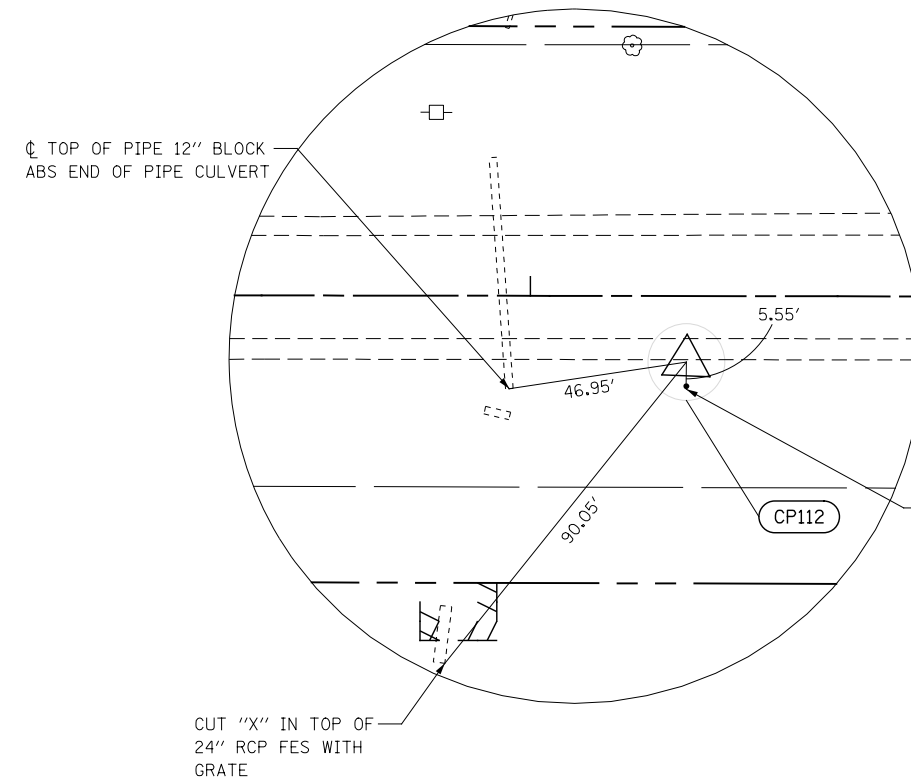
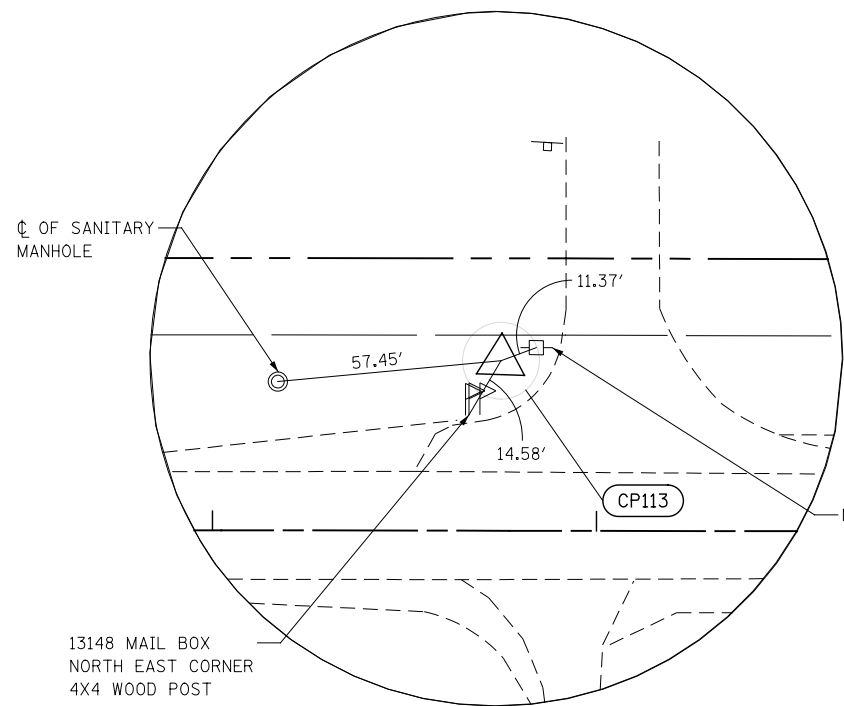


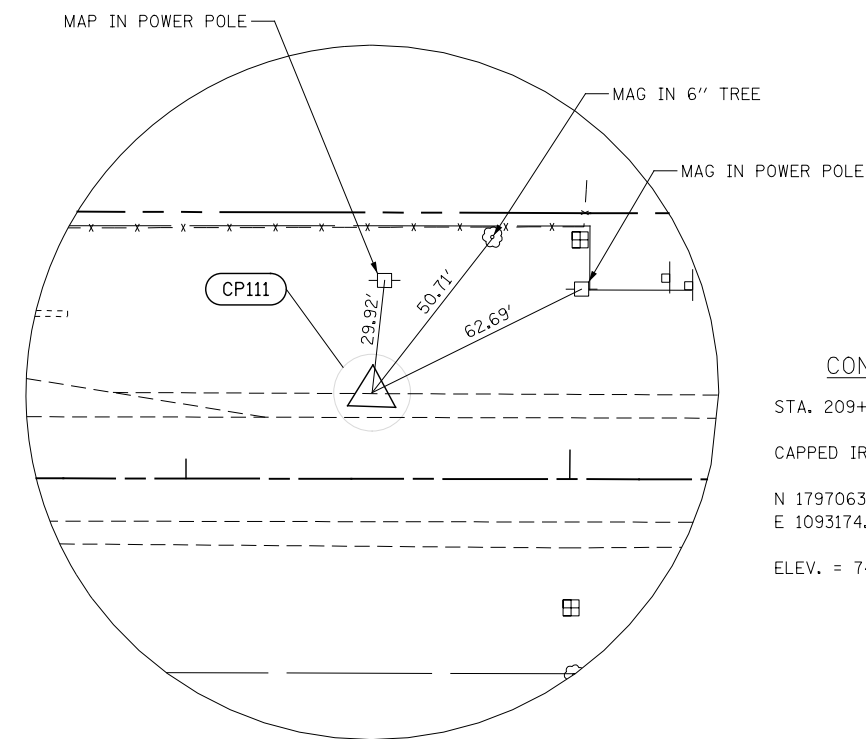
CONTROL POINT 114
 STA. 190+05.58 19.47' RT
 CAPPED IRON ROD
 N 1796956.412
 E 1091234.548
 ELEV. = 747.81



CONTROL POINT 112
 STA. 203+40.67 17.17' RT
 CAPPED IRON ROD
 N 1797003.529
 E 1092568.809
 ELEV. = 737.97



CONTROL POINT 113
 STA. 196+75.07 44.28' LT
 CAPPED IRON ROD
 N 1797042.599
 E 1091901.052
 ELEV. = 740.84



CONTROL POINT 111
 STA. 209+48.45 22.43' LT
 CAPPED IRON ROD
 N 1797063.506
 E 1093174.918
 ELEV. = 741.66

FILE NAME = D:\60X92-shr-ATB-18-11es.dgn

USER NAME = malberts	DESIGNED MEA	REVISED -
PLOT SCALE = 1:50.0003	DRAWN MEA	REVISED -
PLOT DATE = 4/1/2014	CHECKED PJO	REVISED -
	DATE 3/11/2014	REVISED -

**STATE OF ILLINOIS
 DEPARTMENT OF TRANSPORTATION**

ALIGNMENT, BENCHMARKS, AND TIES

SCALE: AS SHOWN SHEET NO. 18 OF 20 SHEETS STA. TO STA.

F.A.P. RTE.	SECTION	COUNTY	TOTAL SHEETS	SHEET NO.
351	536-R-1	WILL/COOK	207	31
CONTRACT NO. 60X92				
ILLINOIS FED. AID PROJECT				