

STATE OF ILLINOIS  
DEPARTMENT OF TRANSPORTATION  
DIVISION OF HIGHWAYS

**PROPOSED  
HIGHWAY PLANS**

FAU ROUTE 3778: (CRAWFORD AVE / PULASKI RD)  
US 6 (159TH ST.) TO I-80  
SECTION (1212.2,1112.1,0708)RS  
RESURFACING (3P)  
COOK COUNTY

C-91-287-14

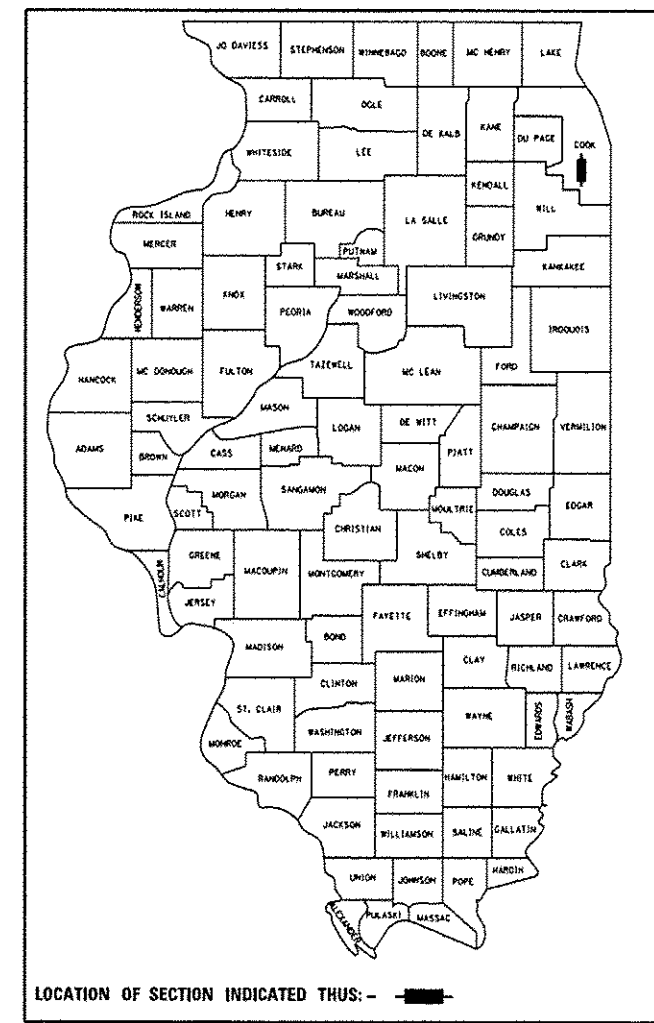
FOR INDEX OF SHEETS, SEE SHEET NO. 2

PROJECT IS LOCATED IN THE CITY OF  
MARKHAM & THE CITY OF COUNTRY CLUB HILLS

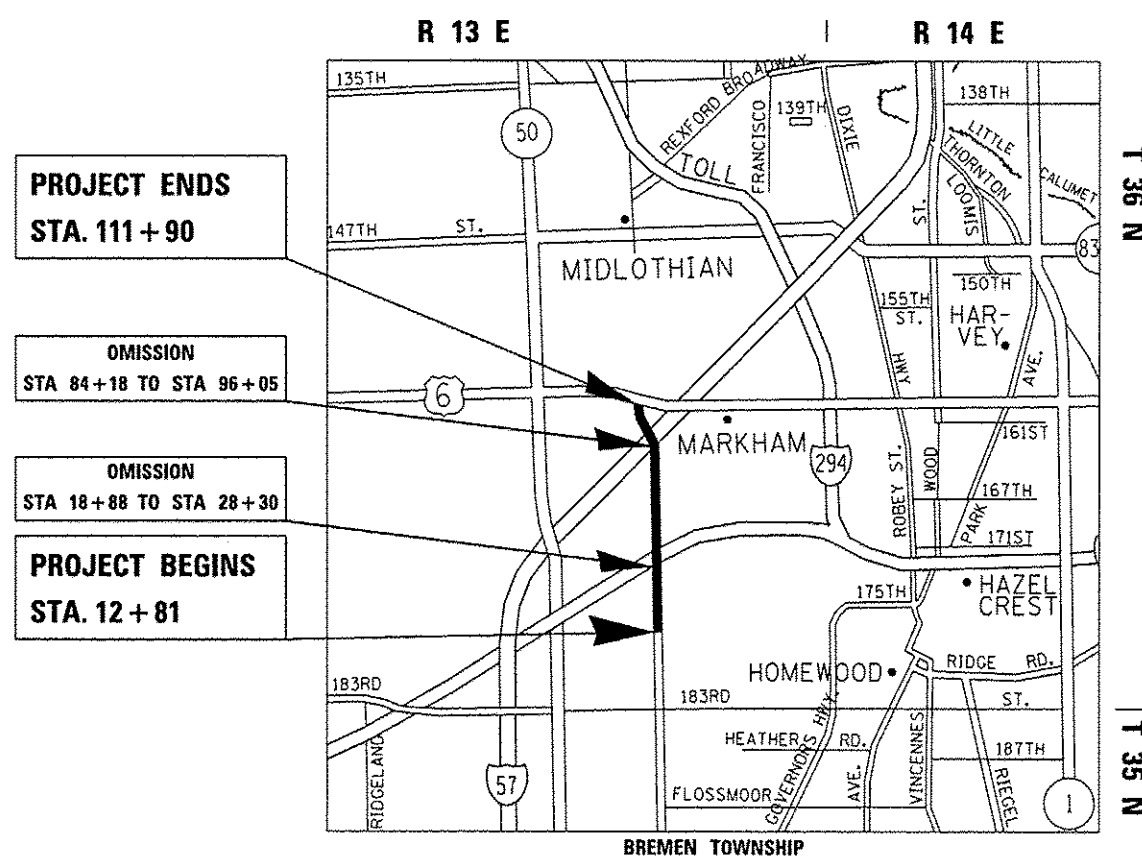
F.A.U. RTE.	SECTION	COUNTY	TOTAL SHEETS	SHEET NO.
3778	(1212.1, 1112.1, 0708) RS	COOK	28	1
ILLINOIS			CONTRACT NO. 60Y03	

\*28 & 3-31

D-91-287-14



LOCATION OF SECTION INDICATED THUS: - [black rectangle] -



**PROJECT ENDS**  
STA. 111 + 90

**OMISSION**  
STA 84 + 18 TO STA 96 + 05

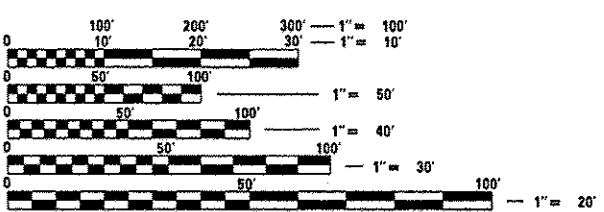
**OMISSION**  
STA 18 + 88 TO STA 28 + 30

**PROJECT BEGINS**  
STA. 12 + 81

T 36 N  
T 35 N



**TRAFFIC DATA**  
2010 ADT = 22,400  
POSTED SPEED LIMIT = 40-45 MPH



FULL SIZE PLANS HAVE BEEN PREPARED USING STANDARD ENGINEERING SCALES. REDUCED SIZED PLANS WILL NOT CONFORM TO STANDARD SCALES. IN MAKING MEASUREMENTS ON REDUCED PLANS, THE ABOVE SCALES MAY BE USED.

J.U.L.I.E.  
JOINT UTILITY LOCATION INFORMATION FOR EXCAVATION  
1-800-892-0123  
OR 811

PROJECT ENGINEER KARI SMITH  
PROJECT MANAGER KEN ENG

GROSS LENGTH = 9,909 FT. = 1.877 MILE  
NET LENGTH = 7,780 FT. = 1.473 MILE

CONTRACT NO. 60Y03

STATE OF ILLINOIS  
DEPARTMENT OF TRANSPORTATION  
DIVISION OF HIGHWAYS

SUBMITTED 4/1/14

John F. [Signature]  
DEPUTY DIRECTOR OF HIGHWAYS, REGION ENGINEER

May 9/14  
John D. Baranzelli, P.E.  
ENGINEER OF DESIGN AND ENVIRONMENT

May 9/14  
Omer Osman, P.E.  
DIRECTOR OF HIGHWAYS, CHIEF ENGINEER


PRINTED BY THE AUTHORITY  
OF THE STATE OF ILLINOIS

Rev. 6-2-14

GENERAL NOTES

INDEX OF SHEETS

HIGHWAY STANDARDS

SHEET NO.	DESCRIPTION	STANDARD NO.	DESCRIPTION
1	COVER SHEET	000001-06	STANDARD SYMBOLS, ABBREVIATIONS & PATTERNS
2	INDEX OF SHEETS	424001-07	PERPENDICULAR CURB RAMPS FOR SIDEWALKS
3-5	SUMMARY OF QUANTITIES	424021-02	DEPRESSED CORNER FOR SIDEWALKS
6-8	TYPICAL SECTIONS	424026-01	ENTRANCE/ALLEY PEDESTRIAN CROSSINGS
9-13	ROADWAY AND PAVEMENT MARKING PLANS	442201-03	CLASS C AND D PATCHES
14-15	DETECTOR LOOP REPLACEMENT PLANS	482011-03	HMA SHOULDER STRIPS/SHOULDERS WITH RESURFACING OR WIDENING AND RESURFACING PROJECTS
15A-C	DETAILS FOR ATR SITE #1170 	604091-02	FRAME AND GRATE TYPE 24
16	DETAILS FOR FRAMES & LIDS ADJUSTMENT WITH MILLING (BD-8)	606306-03	CORRUGATED PC CONCRETE MEDIANS
17	PAVEMENT PATCHING FOR HMA SURFACED PAVEMENT (BD-22)	606001-05	CONCRETE CURB TYPE B AND COMBINATION CONCRETE CURB AND GUTTER
18	CURB OR CURB & GUTTER REMOVAL AND REPLACEMENT (BD-24)	701011-04	OFF-ROAD MOVING OPERATIONS, 2L, 2W, DAY ONLY
19	BUTT JOINT AND HMA TAPER DETAILS (BD-32)	701301-04	LANE CLOSURE, 2L, 2W, SHORT TIME OPERATIONS
20	HMA TAPER AT EDGE OF P.C.C. PAVEMENT (BD-33)	701306-03	LANE CLOSURE, 2L, 2W, SLOW MOVING OPERATIONS, DAY ONLY, FOR SPEEDS >= 45 MPH
21	TRAFFIC CONTROL AND PROTECTION FOR SIDE ROADS, INTERSECTIONS, AND DRIVEWAYS (TC-10)	701311-03	LANE CLOSURE 2L 2W, MOVING OPERATIONS-DAY ONLY
22	TYPICAL APPLICATIONS RAISED REFLECTIVE PAVEMENT MARKERS (SNOW-PLOW RESISTANT) (TC-11)	701336-06	LANE CLOSURE, 2L, 2W, WORK AREA IN SERIES, FOR SPEEDS >= 45 MPH
23	DISTRICT ONE TYPICAL PAVEMENT MARKINGS (TC-13)	701421-06	LANE CLOSURE, MULTILANE, DAY OPERATIONS ONLY, FOR SPEEDS >= 45 MPH TO 55MPH
24	TRAFFIC CONTROL AND PROTECTION AT TURN BAYS (TO REMAIN OPEN TO TRAFFIC) (TC-14)	701426-06	LANE CLOSURE, MULTILANE, INTERMITTENT OR MOVING OPER., FOR SPEEDS >= 45 MPH
25	PAVEMENT MARKING LETTERS AND SYMBOLS FOR TRAFFIC STAGING (TC-16)	701602-07	URBAN LANE CLOSURE, MULTILANE, 2W WITH BIDIRECTIONAL LEFT TURN LANE
26	ARTERIAL ROAD INFORMATION SIGN (TC-22)	701606-09	URBAN LANE CLOSURE, MULTILANE, 2W WITH MOUNTABLE MEDIUM
27	DISTRICT 1 STANDARD TRAFFIC SIGNAL DESIGN DETAILS (TS-05)	701701-09	URBAN LANE CLOSURE, MULTILANE INTERSECTION
28	DISTRICT 1 - DETECTOR LOOP INSTALLATION DETAILS FOR ROADWAY RESURFACING (TS-07)	701801-05	SIDEWALK, CORNER OR CROSSWALK CLOSURE
		701901-03	TRAFFIC CONTROL DEVICES

BEFORE STARTING ANY EXCAVATION, THE CONTRACTOR SHALL CALL "J.U.L.I.E." AT (800) 892-0123 OR 811 FOR FIELD LOCATIONS OF BURIED ELECTRIC, TELEPHONE AND GAS UTILITIES. 48 HOUR NOTIFICATION IS REQUIRED.

THE CONTRACTOR SHALL COORDINATE CONSTRUCTION ACTIVITIES WITH UTILITY COMPANIES, THE CITY OF MARKHAM AND THE CITY OF COUNTRY CLUB HILLS.

THE CONTRACTOR WILL NOT BE ALLOWED TO SET UP A YARD OR FIELD OFFICE ON STATE PROPERTY WITHOUT WRITTEN PERMISSION FROM THE DEPARTMENT.

ANY PAVEMENT MARKINGS AND RAISED REFLECTIVE PAVEMENT MARKERS OBLITERATED BY MILLING AND RESURFACING OPERATIONS ON SIDE STREETS AND ENTRANCES SHALL BE REPLACED AND PAID FOR IN KIND.

ALL DAMAGE TO EXISTING PAVEMENT MARKINGS OR RAISED REFLECTIVE PAVEMENT MARKERS OUTSIDE THE REMOVAL LINE SHOWN ON THE PLANS SHALL BE REPLACED AT NO ADDITIONAL COST TO THE DEPARTMENT.

BEFORE BEGINNING ANY WORK, THE CONTRACTOR SHALL RETAIN AND RECORD FOR FUTURE REFERENCE, ALL EXISTING PAVEMENT MARKING LINES (AND RAISED REFLECTIVE PAVEMENT MARKERS) IN ORDER THAT THESE LOCATIONS CAN BE RE-ESTABLISHED FOR STRIPING. EXACT LOCATIONS OF ALL PAVEMENT MARKINGS SHALL BE AS DIRECTED BY THE ENGINEER.

ALL PAVEMENT PATCHING LOCATIONS WILL BE DETERMINED IN THE FIELD BY THE ENGINEER.

LOCATION OF COMBINATION CONCRETE CURB AND GUTTER REMOVAL AND REPLACEMENT (OR COMBINATION CURB AND GUTTER (THE TYPE SPECIFIED ON THE PLANS)), WILL BE DETERMINED IN THE FIELD BY THE ENGINEER.

DRAINAGE ADJUSTMENT OR RECONSTRUCTION LOCATIONS WILL BE DETERMINED IN THE FIELD BY THE ENGINEER.

IT SHALL BE THE CONTRACTOR'S RESPONSIBILITY TO VERIFY ALL DIMENSIONS AND CONDITIONS EXISTING IN THE FIELD PRIOR TO CONSTRUCTION AND ORDERING OF MATERIALS.

FRAMES AND GRATES ADJUSTMENT OF PRIVATE UTILITIES WITHIN THE LIMITS OF THE IMPROVEMENTS SHALL BE DONE BY THEIR RESPECTIVE OWNERS AND ARE NOT PART OF THIS CONTRACT.

THE CONTRACTOR SHALL CONTACT THE DISTRICT ONE TRAFFIC CONTROL SUPERVISOR AT (847) 705-4470 A MINIMUM OF 72 HOURS IN ADVANCE OF BEGINNING WORK.

THE ENGINEER SHALL CONTACT MS. PATRICE HARRIS, AREA TRAFFIC FIELD ENGINEER, AT (708) 597-9800 A MINIMUM OF TWO (2) WEEKS PRIOR TO THE PLACEMENT OF PERMANENT PAVEMENT MARKINGS.

THESE PLANS HAVE BEEN PREPARED FROM NOTES RECEIVED FROM THE BUREAU OF CONSTRUCTION.

THE CONTRACTOR SHALL BE REQUIRED TO PROVIDE ACCESS TO ABUTTING PROPERTY AT ALL TIMES DURING THE CONSTRUCTION OF THIS PROJECT.

FOR FRAMES AND LIDS ADJUSTMENT WITHOUT MILLING, REUSE EXISTING FRAME AND LID UNLESS OTHERWISE SPECIFIED IN THE PLANS.

DO NOT SCALE PLANS FOR CONSTRUCTION DIMENSIONS.

DOUBLE LANE MARKERS ARE TO BE USED AS SHOWN ON THE DISTRICT ONE DETAIL "TYPICAL APPLICATIONS - RAISED REFLECTIVE PAVEMENT MARKERS (SNOW-PLOW RESISTANT)" SHOWN IN THE PLANS.

PAVEMENT MARKING TAPE, TYPE III SHALL BE USED FOR SHORT TERM PAVEMENT MARKINGS ON ALL FINAL SURFACES. THE COST OF THE PAVEMENT MARKING TAPE, TYPE III AND ITS REMOVAL SHALL BE INCLUDED IN THE COST OF SHORT TERM PAVEMENT MARKING.

WHEN THE MILLED PAVEMENT IS OPEN TO TRAFFIC THE MAXIMUM GRADE DIFFERENTIAL BETWEEN PASSES OF THE MILLING MACHINE SHALL NOT EXCEED 1/8 INCHES (40 mm) WHERE THE SPEED LIMIT IS 40 MPH (60 km/h) OR LESS AND 1 INCH (25 mm) WHERE THE SPEED LIMIT IS GREATER THAN 40 MPH (60 km/h). WITH WRITTEN APPROVAL OF THE ENGINEER, A MAXIMUM GRADE DIFFERENTIAL OF 3 INCHES (75 mm) MAY BE ALLOWED IF THE EDGE OF THE MILLING IS SLOPED A MINIMUM 1:3 (V:H).

BUTT JOINTS WILL BE INSTALLED AT THE ENDS OF ALL RESURFACING (WHERE RESURFACING MEETS EXISTING PAVEMENT) ACCORDING TO THE "BUTT JOINT AND HOT-MIX ASPHALT TAPER DETAILS" SHEET INCLUDED IN THE PLANS, UNLESS OTHERWISE SPECIFIED.

ALL SIDEWALK RAMPS WITHIN THE LIMITS OF THE PROJECT SHALL CONFORM TO CURRENT ADA REQUIREMENTS AND THE APPLICABLE STANDARDS INCLUDED IN THE PLANS.

TEN (10) FOOT TRANSITIONS SHALL BE USED TO MATCH PROPOSED CURB AND GUTTER AND MEDIUM ITEMS OF WORK TO EXISTING CURBS AND GUTTER AND MEDIANS IN THE FIELD, UNLESS OTHERWISE SHOWN, THE TRANSITIONS SHALL BE PAID FOR AT THE CONTRACT UNIT PRICE FOR THE PROPOSED ITEMS OF WORK SPECIFIED.

SIDEWALK REMOVAL AND P.C.C. SIDEWALK 5" LOCATIONS SHALL BE DETERMINED BY THE ENGINEER.

THE CONTRACTOR WILL BE REQUIRED TO KEEP A RECORD OF LOCATIONS OF PLATED STRUCTURES BY STATION AND OFFSET LEFT OR RIGHT OF THE CENTERLINE OF PAVEMENT.

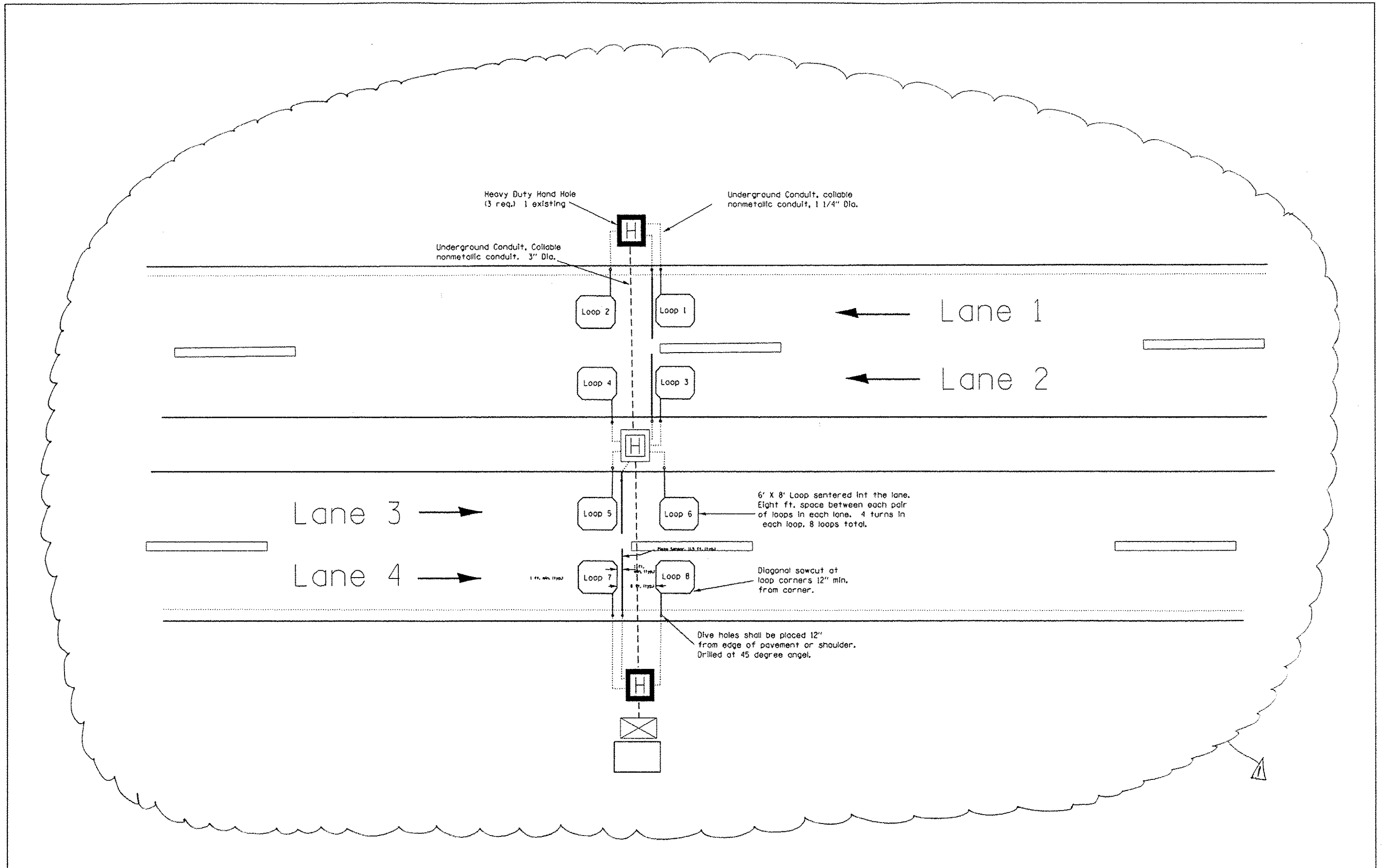
EXISTING BROKEN FRAMES AND LIDS SHALL BE REMOVED AND DISPOSED OF BY THE CONTRACTOR AND SHALL BE REPLACED AS DIRECTED BY THE ENGINEER. REPLACEMENT FRAMES AND LIDS WILL BE PAID FOR ACCORDING TO ARTICLE 109.04 OF THE STANDARD SPECIFICATIONS UNLESS A SEPARATE PAY ITEM HAS BEEN PROVIDED.

FILE NAME :	USER NAME : detmanvra	DESIGNED -	REVISED - <b>5/23/14</b>	<b>STATE OF ILLINOIS DEPARTMENT OF TRANSPORTATION</b>	<b>PULASKI ROAD FROM US 6 (159TH STREET) TO INTERSTATE 80 TABLE OF CONTENTS</b>	F.A. B.T.E.	SECTION	COUNTY	TOTAL SHEETS	SHEET NO.
28714-att-cover.dgn	DRAWN -	REVISED -	3778			(1121.1, 1112.1, 0708) RS	COOK	28	2	
PL01 SCALE 1/8"=1'-0"	CHECKED -	REVISED -	CONTRACT NO. 60Y03							
PL01 DATE 5/22/2014	DATE -	REVISED -	ILLINOIS FED. AID PROJECT							
Default				SCALE:	SHEET 2 OF 28 SHEETS	STA. 12+81	TO STA. 11+90			

SUMMARY OF QUANTITIES				URBAN CONSTRUCTION TYPE CODE					SUMMARY OF QUANTITIES				100% STATE TOTAL QUANTITIES URBAN 0005 CONSTRUCTION TYPE CODE				
CODE NO	ITEM	UNIT	TOTAL QUANTITIES	100% STATE 0005					CODE NO	ITEM	UNIT	TOTAL QUANTITIES	100% STATE 0005				
78300200	RAISED REFLECTIVE PAVEMENT MARKER	EACH	600	600					* 88600100	DETECTOR LOOP, TYPE 1	FOOT	430	430				
	REMOVAL								* 81400200	HEAVY DUTY HANDHOLE	EACH	2	2				
* 88600600	DETECTOR LOOP REPLACEMENT	FOOT	372	372					* X8730810	ELECTRIC CABLE IN CONDUIT, CONOGA - 30003	FOOT	403	403				
* 89502376	REBUILD EXISTING HANDHOLE	EACH	2	2					* 81028770	UNDERGROUND CONDUIT, COILABLE NON METALLIC CONDUIT, 3" DIA.	FOOT	84.5	84.5				1
* 89502378	REBUILD EXISTING HANDHOLE TO HEAVY-DUTY HANDHOLE	EACH	2	2					* 81028730	UNDERGROUND CONDUIT, COILABLE NON METALLIC CONDUIT, 1 1/4" DIA.	FOOT	87.2	87.2				
X2020110	GRADING AND SHAPING SHOULDERS	UNIT	14	14					* X0301242	PIEZO AXLE SENSOR, CLASS 11	FOOT	4	4				
X4060110	BITUMINOUS MATERIALS (PRIME COAT)	POUND	34184	34184													
X4400100	PORTLAND CEMENT CONCRETE SURFACE REMOVAL (VARIABLE DEPTH)	SQ YD	8100	8100													
X5537800	STORM SEWERS TO BE CLEANED 12"	FOOT	3400	3400													
XZ043900	PREFORMED JOINT FILLER REMOVAL	FOOT	5120	5120													
Z0004562	COMBINATION CONCRETE CURB AND GUTTER REMOVAL AND REPLACEMENT	FOOT	750	750													
Z0018500	DRAINAGE STRUCTURES TO BE CLEANED	EACH	47	47													
Z0030850	TEMPORARY INFORMATION SIGNING	SQ FT	51.4	51.4													
44022029	PARTIAL DEPTH REMOVAL, 3"	SQ YD	515	515													

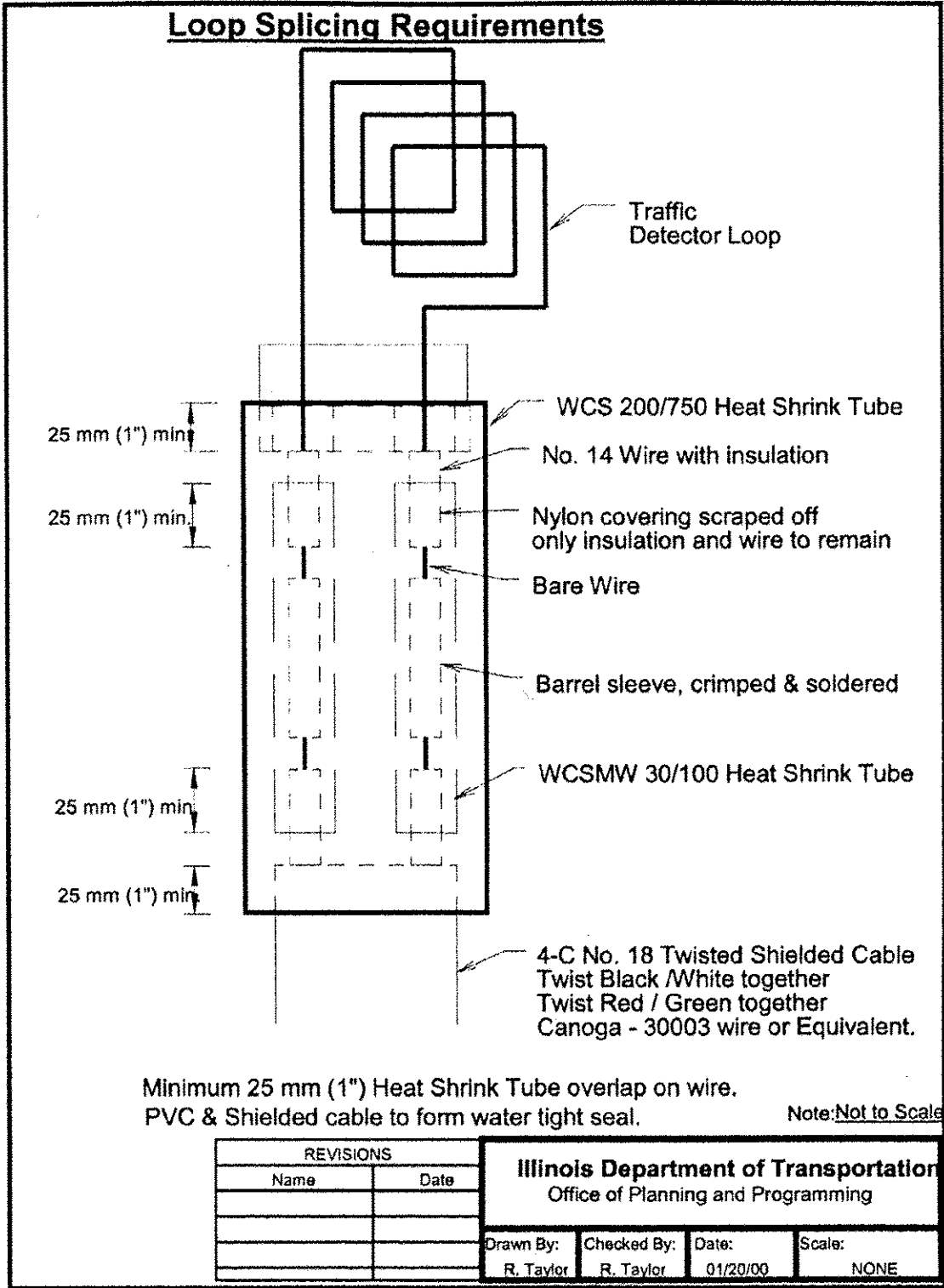
\* SPECIALTY ITEMS 1

Rev. 6-2-14



FILE NAME : c:\pwork\spidat\dattmann\08383212.dwg	USER NAME : dattmann	DESIGNED -	REVISED - <b>A 5/23/14</b>	<b>STATE OF ILLINOIS DEPARTMENT OF TRANSPORTATION</b>	<b>PULASKI ROAD FROM US 6 (159TH STREET) TO INTERSTATE 80 DETAILS FOR ATR SITE #1170</b>		F.A.U. RTE.	SECTION	COUNTY	TOTAL SHEETS	SHEET NO.
Default	28714-ent-cover.dgn	DRAWN -	REVISED -				3778	(1212.1, 1112.1, 0708) RS	COOK	28	15A
	PLOT SCALE = 100.0000' / in.	CHECKED -	REVISED -		SCALE: SHEET OF SHEETS STA. 12+81 TO STA. 111+90		CONTRACT NO. 60Y03		(ILLINOIS) FED. AID PROJECT		
	PLOT DATE = 5/22/2014	DATE -	REVISED -								

**Loop Splicing Requirements**



FILE NAME :	USER NAME :	DESIGNED :	REVISED :
ct:\p\work\roads\det\manna\10303212\1	destnanna	-	- A 5/23/14
	28714-shc-covar.dgn	DRAWN :	REVISED :
		-	-
		CHECKED :	REVISED :
		-	-
		DATE :	REVISED :
		-	-

STATE OF ILLINOIS  
DEPARTMENT OF TRANSPORTATION

PULASKI ROAD FROM US 6 (159TH STREET) TO INTERSTATE 80  
LOOP SPICE DETAIL

SCALE: SHEET 8 OF SHEETS STA. 12+81 TO STA. 11+90

F.A.U. RTE.	SECTION	COUNTY	TOTAL SHEETS	SHEET NO.
3778	(1212.1, 1112.1, 0708) R5	COOK	28	15B
CONTRACT NO. 60Y03				
ILLINOIS FED. AID PROJECT				

