

F.A. RTE.	SECTION	COUNTY	TOTAL SHEETS	SHEET NO.
VAR.	2014-031RS	COOK	78	1
ILLINOIS			CONTRACT NO. 60Y17	

STATE OF ILLINOIS  
DEPARTMENT OF TRANSPORTATION  
DIVISION OF HIGHWAYS

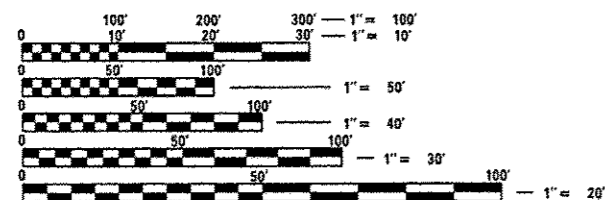
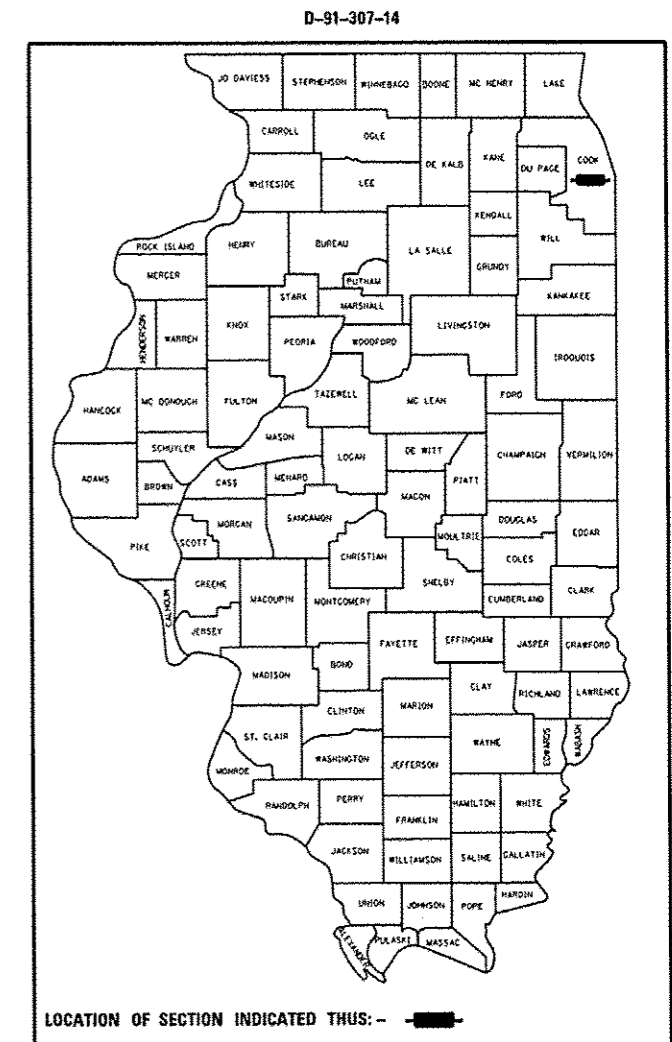
**PROPOSED  
HIGHWAY PLANS**

VARIOUS ROUTES  
SECTION: 2014-031RS  
VARIOUS SOUTH EXPRESSWAY LOCATIONS  
INTERMITTENT RESURFACING  
COOK COUNTY  
C-91-307-14

FOR INDEX OF SHEETS, SEE SHEET NO. 2

THIS PROJECT IS LOCATED IN:  
THE VILLAGE OF CALUMET PARK  
THE VILLAGE OF DIXMOOR  
THE VILLAGE OF FORD HEIGHTS  
THE VILLAGE OF HAZEL CREST  
THE VILLAGE OF LANSING  
THE VILLAGE OF LYNWOOD  
THE VILLAGE OF MATTESON  
THE VILLAGE OF RIVERDALE  
THE VILLAGE OF SAUK VILLAGE  
THE VILLAGE OF SOUTH HOLLAND  
THE CITY OF BLUE ISLAND  
THE CITY OF CHICAGO

FOR GENERAL LOCATION MAP, SEE SHEET NO. 4



FULL SIZE PLANS HAVE BEEN PREPARED USING STANDARD ENGINEERING SCALES. REDUCED SIZED PLANS WILL NOT CONFORM TO STANDARD SCALES. IN MAKING MEASUREMENTS ON REDUCED PLANS, THE ABOVE SCALES MAY BE USED.

J.U.L.I.E.  
JOINT UTILITY LOCATION INFORMATION FOR EXCAVATION  
1-800-892-0123  
OR 811

PROJECT ENGINEER: DANIEL WILGREEN (847) 705-4240  
PROJECT MANAGER: KEN ENG (847) 705-4247

CONTRACT NO. 60Y17

STATE OF ILLINOIS  
DEPARTMENT OF TRANSPORTATION  
DIVISION OF HIGHWAYS

SUBMITTED *Apr 10 2014*  
*John F. [Signature]*  
DEPUTY DIRECTOR OF HIGHWAYS, REGION ENGINEER

*May 9 2014*  
*John D. Baranzelli, PE, PE*  
ENGINEER OF DESIGN AND ENVIRONMENT

*May 9 2014*  
*Chris O'Sullivan, PE, PE*  
DIRECTOR OF HIGHWAYS, CHIEF ENGINEER

PRINTED BY THE AUTHORITY  
OF THE STATE OF ILLINOIS