

INDEX OF SHEETS

SHEET NO.	DESCRIPTION
1	TITLE SHEET
2	INDEX OF SHEETS, HIGHWAY STANDARDS, GENERAL NOTES, D-1 DETAILS, BENCHMARKS AND COMMITMENTS
3 -6	SUMMARY OF QUANTITIES
7 -12	EXISTING AND PROPOSED TYPICAL SECTIONS
13	LAYOUT PLAN
14	ROADWAY PLANS - ROAD 1
15	ROADWAY PLANS - ROAD 2
16	ROADWAY PLANS - ROAD 3
17 -18	ROADWAY PLANS - ROAD 4
19	ROADWAY PLANS - ROAD 5 AND ROAD 6 (STA 608+50 TO STA 613+50)
20	ROADWAY PLANS - ROAD 6 (STA 613+50 TO STA 620+56) AND ROAD 6A
21	ROADWAY PLANS - ROAD 7
22	(BD-03) OUTLET FOR CONCRETE CURB AND GUTTER
23	(BD-08) DETAILS FOR FRAMES AND LIDS ADJUSTMENT WITH MILLING
24	(BD-32) BUTT JOINT AND HMA TAPER DETAILS
25	(TC-10) TRAFFIC CONTROL AND PROTECTION FOR SIDE ROADS, INTERSECTIONS, AND DRIVEWAYS

HIGHWAY STANDARDS

000001	STANDARD SYMBOLS, ABBREVIATIONS, AND PATTERNS
442201	CLASS C AND D PATCHES
606001	CONCRETE CURB TYPE B AND COMBINATION CONCRETE CURB AND GUTTER
701301	LANE CLOSURE 2L, 2W, SHORT TIME OPERATIONS
701311	LANE CLOSURE 2L, 2W MOVING OPERATIONS - DAY ONLY
701501	URBAN LANE CLOSURE, 2L, 2W UNDIVIDED
701901	TRAFFIC CONTROL DEVICES

GENERAL NOTES

- ALL CONSTRUCTION SHALL BE DONE IN ACCORDANCE WITH THE DETAILS IN THE PLANS, THE SPECIAL PROVISIONS INCLUDED IN THE CONTRACT DOCUMENTS, AND THE LATEST EDITION OF THE FOLLOWING STATE OF ILLINOIS SPECIFICATIONS: "THE STANDARD SPECIFICATIONS FOR ROAD AND BRIDGE CONSTRUCTION" (REFERRED TO AS THE "STANDARD SPECIFICATIONS"), THE "SUPPLEMENTAL SPECIFICATIONS AND RECURRING SPECIAL SPECIFICATIONS", THE "MANUAL ON UNIFORM TRAFFIC CONTROL DEVICES FOR STREETS AND HIGHWAYS" AND THE "MANUAL OF TEST PROCEDURES FOR MATERIALS".
- J.U.L.I.E. WILL NOT LOCATE UTILITIES WITHIN THE FACILITY. CONTRACTOR WILL HAVE TO HIRE THEIR OWN LOCATING SERVICE FOR LOCATING UTILITIES WITHIN THE FACILITY AS PART OF THE COST OF MOBILIZATION. COORDINATE UTILITY LOCATING WITH THE FACILITY'S CHIEF ENGINEER.
- THE CONTRACTOR WILL NOT BE ALLOWED TO SET UP A YARD OR FIELD OFFICE ON STATE PROPERTY WITHOUT THE WRITTEN PERMISSION OF THE DEPARTMENT.
- THE CONTRACTOR SHALL COORDINATE ALL CONSTRUCTION ACTIVITIES WITH UTILITY COMPANIES AND THE ILLINOIS YOUTH CENTER CHIEF ENGINEER.
- BUTT JOINTS WILL BE INSTALLED AT THE ENDS OF ALL RESURFACING (WHERE RESURFACING MEETS EXISTING PAVEMENT), IN ACCORDANCE WITH THE "BUTT JOINT AND HMA TAPER DETAILS" SHEET INCLUDED IN THE PLANS UNLESS OTHERWISE SPECIFIED.
- WHEN MILLED PAVEMENT IS OPEN TO TRAFFIC, THE MAXIMUM GRADE DIFFERENTIAL BETWEEN PASSES OF THE MILLING MACHINE SHALL NOT EXCEED 1 1/2 INCHES WHERE THE SPEED LIMIT IS 45 MPH OR LESS AND 1 INCH WHERE THE SPEED LIMIT IS GREATER THAN 45 MPH. WITH WRITTEN APPROVAL FROM THE ENGINEER, A MAXIMUM GRADE DIFFERENTIAL OF 3 INCHES MAY BE ALLOWED IF THE EDGE OF MILLING IS SLOPED AT A MINIMUM OF 1:3 (V:H).
- THE CONTRACTOR SHALL CONTACT THE ILLINOIS YOUTH CENTER CHIEF ENGINEER AT (630) 584-0506 EXT. 290 A MINIMUM OF 72 HOURS IN ADVANCE OF BEGINNING WORK.
- ALL PAVEMENT PATCHING LOCATIONS WILL BE DETERMINED IN THE FIELD BY THE ENGINEER.
- THE CONTRACTOR SHALL BE RESPONSIBLE FOR VERIFYING ALL DIMENSIONS AND CONDITIONS EXISTING IN THE FIELD PRIOR TO CONSTRUCTION AND ORDERING MATERIALS.
- THE CONTRACTOR SHALL BE REQUIRED TO PROVIDE ACCESS TO ADJUTING PROPERTY AT ALL TIMES DURING THE CONSTRUCTION OF THIS PROJECT.
- EXISTING TUNNEL CROSSINGS SHALL BE MAINTAINED. PROVIDE BUTT JOINTS AT EDGES OF TUNNEL CROSSINGS AND DO NOT OVERLAY TUNNEL CROSSINGS. TUNNEL CROSSINGS ARE OMISSIONS FROM WORK ON THIS PROJECT.
- PROTECT AND MAINTAIN EXISTING EXPOSED CONCRETE UTILITY DUCTS DURING RESURFACING OPERATIONS. UTILITY DUCTS MAY BE OVERLAID IF APPROVED BY THE ENGINEER.
- PROPOSED CURB SHALL MATCH EXISTING SIDEWALKS AT BACK-OF-CURB (BOC). TOP OF CURB OR DEPRESSED CURB SHALL MATCH THE EXISTING TOP OF SIDEWALK AT BOC. SIDEWALK SHALL NOT BE REMOVED AND REPLACED AT THE BOC.
- PCC DRIVEWAYS SHALL NOT BE REMOVED FOR FORMING PURPOSES UNLESS OTHERWISE DIRECTED BY THE ENGINEER.
- EARTH EXCAVATION TO INSTALL A 4" AGGREGATE BASE COURSE UNDER THE PROPOSED CURB AND GUTTER SHALL BE INCLUDED IN THE COST OF THE CURB AND GUTTER CONSTRUCTION.
- EARTH EXCAVATION SHALL NOT BE HAULED OFF-SITE. EARTH EXCAVATION MAY BE USED AS EMBANKMENT WHERE NEEDED ELSEWHERE ON THE PROJECT OR DUMPED IN A LOCATION DESIGNATED BY THE FACILITY'S CHIEF ENGINEER. ANY SPOIL PILES SHALL BE IMMEDIATELY STABILIZED WITH TEMPORARY EROSION CONTROL SEEDING AND EROSION CONTROL BLANKET.
- ALL INLET STRUCTURES DOWNSTREAM OF ANY EXCAVATION SHALL BE PROTECTED WITH INSTALLATION OF INLET FILTERS.

DISTRICT ONE DETAILS

(BD-03)	OUTLET FOR CONCRETE CURB AND GUTTER
(BD-08)	DETAILS FOR FRAMES AND LIDS ADJUSTMENT WITH MILLING
(BD-32)	BUTT JOINT AND HMA TAPER DETAILS
(TC-10)	TRAFFIC CONTROL AND PROTECTION FOR SIDE ROADS, INTERSECTIONS, AND DRIVEWAYS

COMMITMENTS

THERE ARE NO COMMITMENTS FOR THIS PROJECT.

BENCHMARKS

BM #15	NORTHEAST ARROW BOLT ON FIRE HYDRANT AT NORTHEAST NEX AT CLOCK TOWER BUILDING ELEVATION = 798.65 (NAVD88)
BM #1405	"X" SET IN SEX CONCRETE BASE WEST SIDE OF ROAD IN FRONT OF OLD MCKINLY BUILDING ELEVATION = 792.87 (NAVD88)
BM #1549	SOUTHWEST ARROW BOLT ON FIRE HYDRANT SOUTH SIDE OF ROAD IN FRONT OF MESS HALL ELEVATION = 780.84 (NAVD88)
BM #3753	NORTHEAST ARROW BOLT ON FIRE HYDRANT WITH "X" AT NORTH OLD GUARD SHACK JUST INSIDE GATE WEST SIDE OF ROAD ELEVATION = 780.99 (NAVD88)

COPYRIGHT © 2014 BY BAXTER & WOODMAN, INC.
 STATE OF ILLINOIS PROFESSIONAL ENGINEERING LICENSE NO. 184-001217 EXP. 05/31/2015
 23040
 5/23/2014 2:48:06 PM
 \\s04c01\work\140183-W0-1-GenNotes.dgn
 \\s04c01\work\140183-W0-1-GenNotes.dgn
 \\s04c01\work\140183-W0-1-GenNotes.dgn
 \\s04c01\work\140183-W0-1-GenNotes.dgn
 \\s04c01\work\140183-W0-1-GenNotes.dgn

BAXTER & WOODMAN

DESIGNED - DSH	REVISED - A 5-23-14
DRAWN - UKB	REVISED -
CHECKED - LDH	REVISED -
DATE - 05-06-14	FILE - 140183_W0-1-GenNotes.dgn

STATE OF ILLINOIS
DEPARTMENT OF TRANSPORTATION

ILLINOIS YOUTH CENTER - ST. CHARLES
INDEX OF SHEETS, HIGHWAY STANDARDS, GENERAL NOTES,
D-1 DETAILS, BENCHMARKS AND COMMITMENTS

SCALE: NONE

STA. TO STA.

F.A. RTE.	SECTION	COUNTY	TOTAL SHEETS	SHEET NO.
347	2014-04R5	KANE	25	2
C-91-374-14		CONTRACT NO. 60Y37		
FED. ROAD DIST. NO. 1 ILLINOIS FED. AID PROJECT				

SUMMARY OF QUANTITIES			URBAN TOTAL QUANTITY	CONSTRUCTION TYPE CODE		
CODE NO.	ITEM DESCRIPTION	UNIT		100% STATE 0005 QUANTITY	QUANTITY	QUANTITY
21101615	TOPSOIL FURNISH AND PLACE, 4"	SQ YD	2,254	2,254		
25000110	SEEDING, CLASS 1A	ACRE	0.47	0.47		
25000400	NITROGEN FERTILIZER NUTRIENT	POUND	43	43		
25000500	PHOSPHORUS FERTILIZER NUTRIENT	POUND	43	43		
25000600	POTASSIUM FERTILIZER NUTRIENT	POUND	43	43		
25100630	EROSION CONTROL BLANKET	SQ YD	2,254	2,254		
25200200	SUPPLEMENTAL WATERING	UNIT	136	136		
28000250	TEMPORARY EROSION CONTROL SEEDING	POUND	47	47		
28000510	INLET FILTERS	EACH	13	13		
28001100	TEMPORARY EROSION CONTROL BLANKET	SQ YD	2,254	2,254		
35101400	AGGREGATE BASE COURSE, TYPE B	TON	1335	1335	A	
35101600	AGGREGATE BASE COURSE, TYPE B 4"	SQ YD	1,393	1,393		
35800100	PREPARATION OF BASE	SQ YD	11,422	11,422		
40600400	MIXTURE FOR CRACKS, JOINTS, AND FLANGWAYS	TON	7	7		
40600625	LEVELING BINDER (MACHINE METHOD), N50	TON	293	293		

* INDICATES SPECIALTY ITEM

COPYRIGHT © 2014 BY BAXTER & WOODMAN, INC.
 STATE OF ILLINOIS - PROFESSIONAL DESIGN FIRM
 LICENSE NO. 018-0000001-00000000
 2014-06-14 09:52:23 AM
 C:\Users\ldoh\Documents\140183_10-1-S00.dgn

BAXTER & WOODMAN

DESIGNED - DSH	REVISED -
DRAWN - LKB	REVISED -
CHECKED - LDH	REVISED -
DATE - 05-06-14	FILE - 140183_10-1-S00.dgn

STATE OF ILLINOIS
DEPARTMENT OF TRANSPORTATION

ILLINOIS YOUTH CENTER - ST. CHARLES
SUMMARY OF QUANTITIES

SCALE: STA. TO STA.

A Rev. 6-2-14

F.A. RTE.	SECTION	COUNTY	TOTAL SHEETS	SHEET NO.
347	2014-04R5	KANE	25	3
C-91-374-14			CONTRACT NO. 60Y37	
FED. ROAD DIST. NO. 1 (ILLINOIS) FED. AID PROJECT				

SUMMARY OF QUANTITIES			URBAN TOTAL QUANTITY	CONSTRUCTION TYPE CODE		
CODE NO.	ITEM DESCRIPTION	UNIT		100% STATE 0005 QUANTITY	QUANTITY	QUANTITY
40600895	CONSTRUCTING TEST STRIP	EACH	1	1		
40600982	HOT-MIX ASPHALT SURFACE REMOVAL - BUTT JOINT	SQ YD	340	340		
40600985	PORTLAND CEMENT CONCRETE SURFACE REMOVAL - BUTT JOINT	SQ YD	220	220		
40603080	HOT-MIX ASPHALT BINDER COURSE, IL-19.0, N50	TON	1,478	1,478		
40603335	HOT-MIX ASPHALT SURFACE COURSE, MIX "D", N50	TON	1,517	1,517		
40800050	INCIDENTAL HOT-MIX ASPHALT SURFACING	TON	20	20		
42300400	PORTLAND CEMENT CONCRETE DRIVEWAY PAVEMENT, 8 INCH	SQ YD	154	154		
42001300	PROTECTIVE COAT	SQ YD	1,556	1,556		
44000100	PAVEMENT REMOVAL	SQ YD	422	422		
44000157	HOT-MIX ASPHALT SURFACE REMOVAL, 2" A	SQ YD	12,488	12,488		
44000200	DRIVEWAY PAVEMENT REMOVAL	SQ YD	179	179		
44000300	CURB REMOVAL	FOOT	411	411		
44000500	COMBINATION CURB AND GUTTER REMOVAL	FOOT	5,387	5,387		
44000600	SIDEWALK REMOVAL	SQ FT	147	147		
44201692	CLASS D PATCHES, TYPE II, 4 INCH A	SQ YD	46	46		

* INDICATES SPECIALTY ITEM

COPYRIGHT © 2014 BY BAXTER & WOODMAN, INC.
 STATE OF ILLINOIS - PROFESSIONAL ENGINEER
 LICENSE NO. 181-00121 - EXPIRES 5/31/2015
 5/29/2014

BAXTER & WOODMAN
INCORPORATED

DESIGNED - DSH	REVISED -
DRAWN - LKB	REVISED -
CHECKED - LDH	REVISED -
GATE - 09-06-14	FILE - 140183_#0-1-S00.dgn

STATE OF ILLINOIS
DEPARTMENT OF TRANSPORTATION

ILLINOIS YOUTH CENTER - ST. CHARLES
SUMMARY OF QUANTITIES

SCALE: STA. TO STA.

F.A. RTE.	SECTION	COUNTY	TOTAL SHEETS	SHEET NO.
347	2014-04R5	KANE	25	4
C-91-374-14			CONTRACT NO. 6CY37	
FED. ROAD DIST. NO. 1 ILLINOIS FED. AID PROJECT				

A Rev. 6-2-14

SUMMARY OF QUANTITIES			URBAN TOTAL QUANTITY	CONSTRUCTION TYPE CODE		
CODE NO.	ITEM DESCRIPTION	UNIT		100% STATE 0005 QUANTITY	QUANTITY	QUANTITY
44201694	CLASS D PATCHES, TYPE III, 4 INCH	SQ YD	69	69		
44201696	CLASS D PATCHES, TYPE IV, 4 INCH	SQ YD	115	115		
44201717	CLASS D PATCHES, TYPE II, 6 INCH	SQ YD	88	88		
44201721	CLASS D PATCHES, TYPE III, 6 INCH	SQ YD	70	70		
44201723	CLASS D PATCHES, TYPE IV, 6 INCH	SQ YD	228	228		
44201741	CLASS D PATCHES, TYPE II, 8 INCH	SQ YD	47	47		
44201745	CLASS D PATCHES, TYPE III, 8 INCH	SQ YD	70	70		
44201747	CLASS D PATCHES, TYPE IV, 8 INCH	SQ YD	117	117		
48102100	AGGREGATE WEDGE SHOULDER, TYPE B	TON	317	317		
60234200	INLETS, TYPE A, TYPE 1 FRAME, OPEN LID	EACH	2	2		
60255500	MANHOLES TO BE ADJUSTED	EACH	1	1		
60260100	INLETS TO BE ADJUSTED	EACH	3	3		
60261300	INLETS TO BE ADJUSTED WITH NEW TYPE 11 FRAME AND GRATE	EACH	2	2		
60262700	INLETS TO BE RECONSTRUCTED	EACH	1	1		
60403800	LIDS, TYPE 1, CLOSED LID	EACH	1	1		
60500060	REMOVING INLETS	EACH	2	2		

* INDICATES SPECIALTY ITEM

CONSENT & WORK BY BAXTER & WOODMAN, INC.
 STATE OF ILLINOIS
 LICENSE NO. 184-00821 - EXPIRES 4/30/2015
 5/5/2014 5:19:45 PM
 PROJECT: ILLINOIS YOUTH CENTER - ST. CHARLES
 DRAWING: 140183.W0-1-SQ2.dgn

BAXTER & WOODMAN

DESIGNED - DSH	REVISED -
DRAWN - UKB	REVISED -
CHECKED - LDH	REVISED -
DATE - 05-06-14	FILE - 140183.W0-1-SQ2.dgn

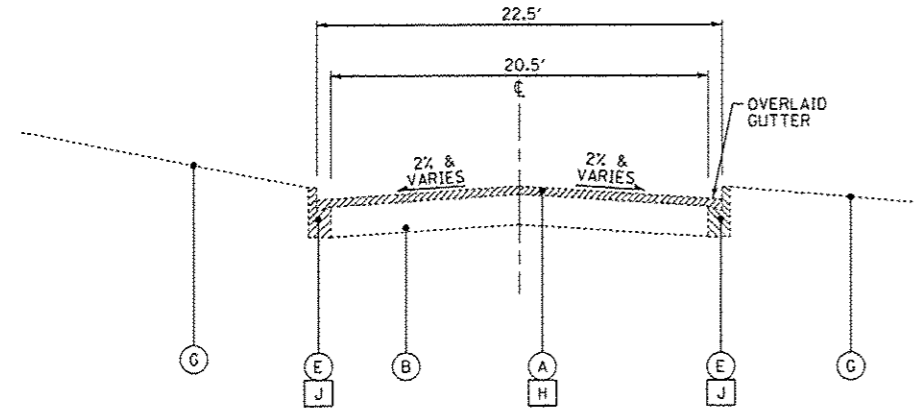
STATE OF ILLINOIS
DEPARTMENT OF TRANSPORTATION

ILLINOIS YOUTH CENTER - ST. CHARLES
SUMMARY OF QUANTITIES

SCALE: STA. TO STA.

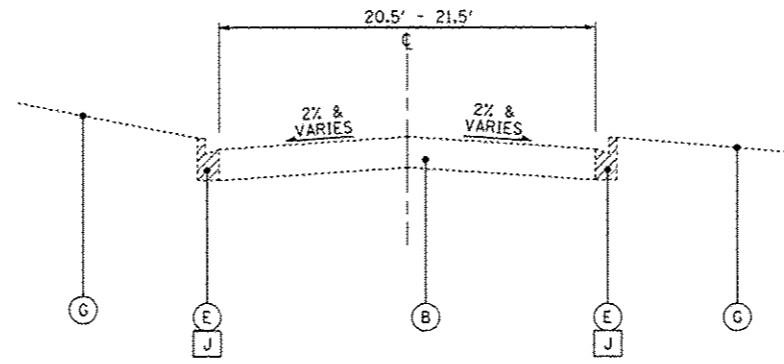
A Rev. 6-2-14

P.A. RTE.	SECTION	COUNTY	TOTAL SHEETS	SHEET NO.
347	2014-04RS	KANE	25	6
C-91-374-14			CONTRACT NO. 60Y37	
FED. ROAD DIST. NO. 1 ILLINOIS FED. AID PROJECT				



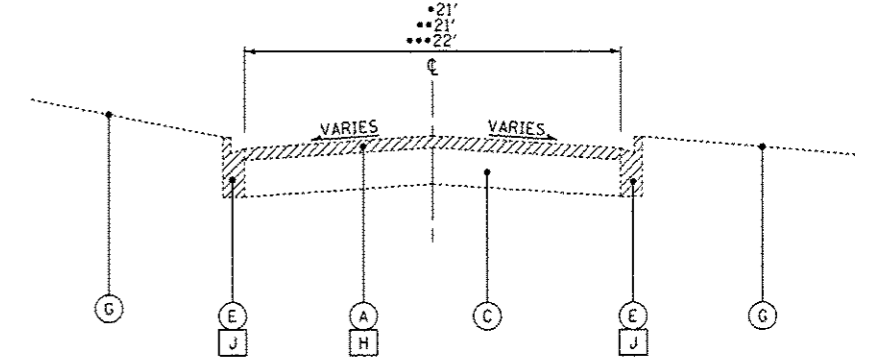
EXISTING TYPICAL SECTION

ROAD 1
STA 107+75 TO STA 111+53



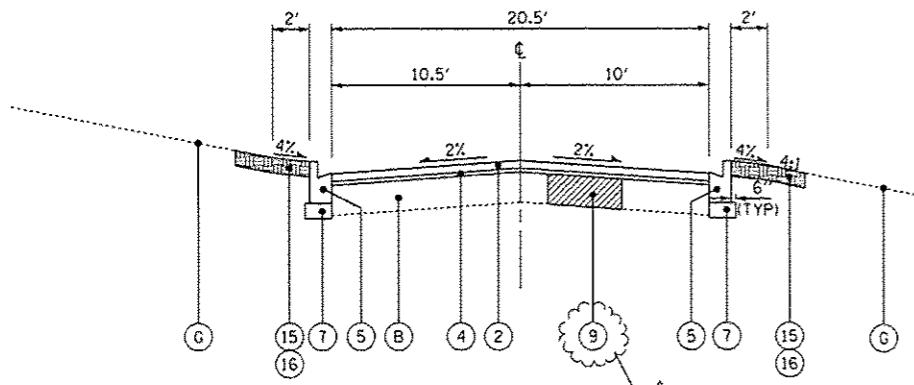
EXISTING TYPICAL SECTION

ROAD 1
STA 111+53 TO STA 114+24



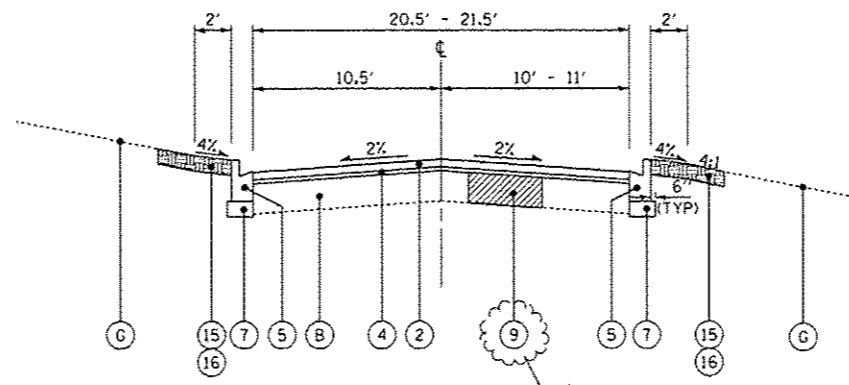
EXISTING TYPICAL SECTION

•• ROAD 1 STA 114+29 TO STA 117+22
 ••• ROAD 4 STA 406+42 TO STA 409+75
 • ROAD 4 STA 409+75 TO STA 412+27



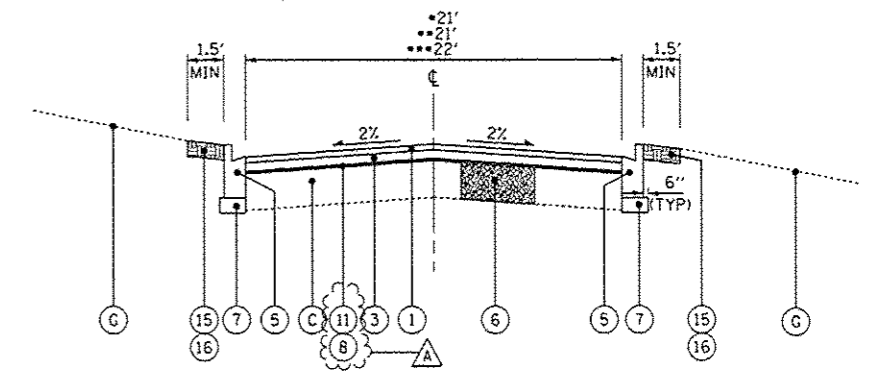
PROPOSED TYPICAL SECTION

ROAD 1
STA 107+75 TO STA 111+53



PROPOSED TYPICAL SECTION

ROAD 1
STA 111+53 TO STA 114+24



PROPOSED TYPICAL SECTION

•• ROAD 1 STA 114+29 TO STA 117+22
 ••• ROAD 4 STA 406+42 TO STA 409+75
 • ROAD 4 STA 409+75 TO STA 412+27

EXISTING LEGEND

- (A) EXISTING HMA SURFACE - 1 1/2" - 2 1/2"
- (AA) EXISTING HMA SURFACE - 4"
- (B) EXISTING PCC PAVEMENT - 6"
- (C) EXISTING AGGREGATE BASE - 1" - 8"
- (D) EXISTING CURB
- (E) EXISTING CURB AND GUTTER
- (F) EXISTING AGGREGATE SHOULDER - 3"± (WHERE IT EXISTS)
- (G) EXISTING GROUND
- (H) HOT-MIX ASPHALT SURFACE REMOVAL - 2"
- (I) CURB REMOVAL
- (J) COMBINATION CURB AND GUTTER REMOVAL
- (K) PAVEMENT REMOVAL
- (Hatched) ITEM TO BE REMOVED

PROPOSED LEGEND

- (1) HOT-MIX ASPHALT SURFACE COURSE, MIX "D", N50 - 1 1/2"
- (2) HOT-MIX ASPHALT SURFACE COURSE, MIX "D", N50 - 2"
- (3) HOT-MIX ASPHALT BINDER COURSE, IL-19.0, N50 - 2 1/4"
- (4) LEVELING BINDER (MACHINE METHOD), N50 - 1"
- (5) COMBINATION CONCRETE CURB AND GUTTER, TYPE B-6.12
- (6) BASE COURSE REMOVAL (SPECIAL) AND AGGREGATE BASE COURSE, TYPE B (AS DETERMINED BY THE ENGINEER)
- (7) AGGREGATE BASE COURSE, TYPE B - 4"
- (8) AGGREGATE BASE COURSE, TYPE B (±1")
- (9) CLASS D PATCHES - 6" (AS DETERMINED BY THE ENGINEER)
- (10) CLASS D PATCHES - 4" (AS DETERMINED BY THE ENGINEER)
- (11) PREPARATION OF BASE
- (12) GRADING AND SHAPING SHOULDERS
- (13) AGGREGATE WEDGE SHOULDER, TYPE B
- (14) PORTLAND CEMENT CONCRETE SURFACE REMOVAL - BUTT JOINT
- (15) TOPSOIL FURNISH AND PLACE, 4"
- (16) SEEDING, CLASS 1A

NOTE:
THE CONTRACTOR SHALL MILL FIRST BEFORE PATCHING.

HOT-MIX ASPHALT MIXTURE REQUIREMENTS		QUALITY MANAGEMENT PROGRAM (QMP)
MIXTURE TYPE	AIR VOIDS Ndes	
HOT-MIX ASPHALT SURFACE COURSE, MIX "D", N50 (IL 9.5mm)	4% @ 50 GYR.	QCP
HOT-MIX ASPHALT BINDER COURSE, IL 19.0 mm, N50	4% @ 50 GYR.	QCP
LEVELING BINDER (MACHINE METHOD), N50	4% @ 50 GYR.	QC/OA
INCIDENTAL HOT-MIX ASPHALT SURFACING (HMA SURFACE 9.5mm)	4% @ 50 GYR.	QC/OA
CLASS D PATCHES (HMA BINDER IL-19 mm) (>4" IN TWO LIFTS)	4% @ 70 GYR.	QC/OA

(QMP DESIGNATIONS:) QUALITY CONTROL/QUALITY ASSURANCE (QC/OA); QUALITY CONTROL PERFORMANCE (QCP); PAY FOR PERFORMANCE (PFP)

THE UNIT WEIGHT USED TO CALCULATE ALL HMA SURFACE MIXTURE QUANTITIES IS 112 LBS/SO YD./IN

THE "AC TYPE" FOR POLYMERIZED HMA MIXES SHALL BE SBS/SBR PG 76-22 AND FOR NON-POLYMERIZED HMA THE "AC TYPE" SHALL BE "PG 64-22" UNLESS MODIFIED BY DISTRICT ONE SPECIAL PROVISIONS. FOR USE OF RECYCLED MATERIALS SEE SPECIAL PROVISIONS. QUALITY MANAGEMENT PROGRAM (QMP) IDENTIFIES THE PARTICULAR QUALITY CONTROL SPECIFICATION THAT APPLIES TO THE HMA MIXTURE

COPYRIGHT © 2014 BY BAXTER & WOODMAN, INC.
 STATE OF ILLINOIS - PROFESSIONAL DESIGN FIRM
 LICENSE NO. - 884-00120 - EXPIRES 4/30/2015
 2304 S
 5/23/2014

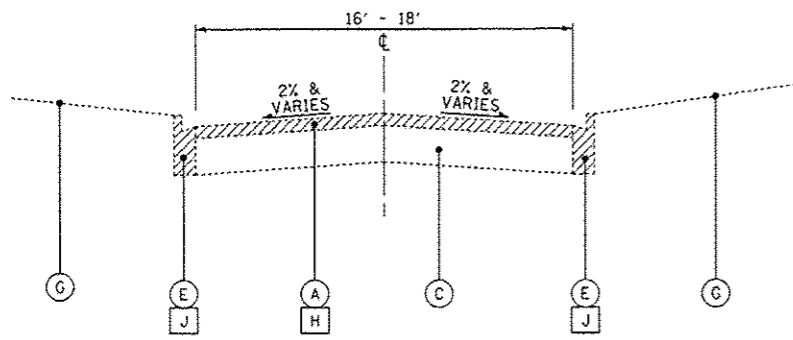
DESIGNED - DSH	REVISED - A 5-23-14
DRAWN - UKB	REVISED -
CHECKED - LDH	REVISED -
DATE - 05-06-14	FILE - 140183.W0-1-TypSect.dgn

STATE OF ILLINOIS
DEPARTMENT OF TRANSPORTATION

ILLINOIS YOUTH CENTER - ST. CHARLES
EXISTING AND PROPOSED TYPICAL SECTIONS

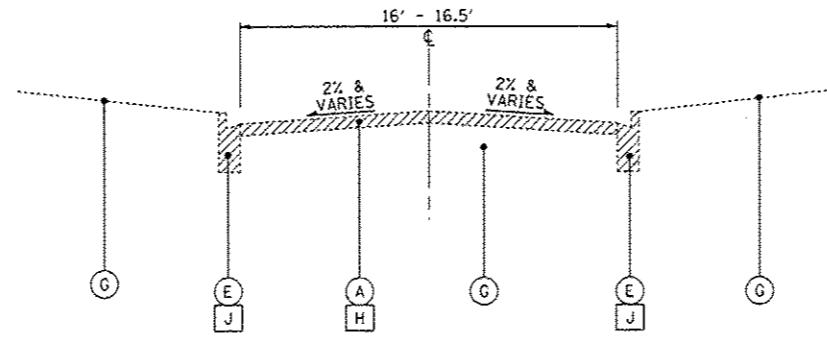
F.A. RTE.	SECTION	COUNTY	TOTAL SHEETS	SHEET NO.
347	2014-04RS	KANE	25	7
C-91-374-14			CONTRACT NO. 60Y37	
FED. ROAD DIST. NO. 1 [ILLINOIS] FED. AID PROJECT				

SCALE: NONE STA. TO STA.



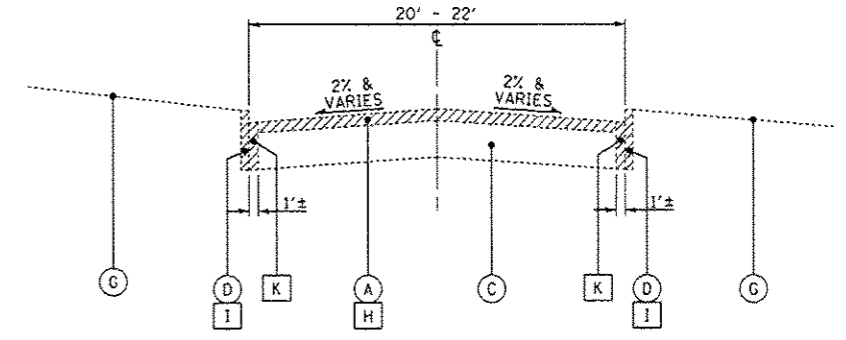
EXISTING TYPICAL SECTION

ROAD 2
STA 200+10 TO STA 200+58
STA 201+18 TO STA 206+21



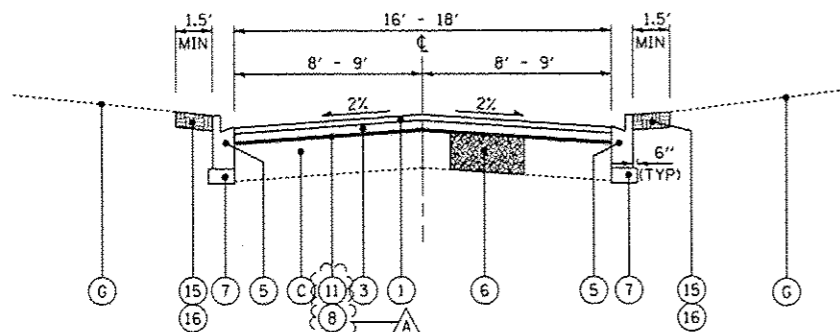
EXISTING TYPICAL SECTION

ROAD 2
STA 200+58 TO STA 201+18



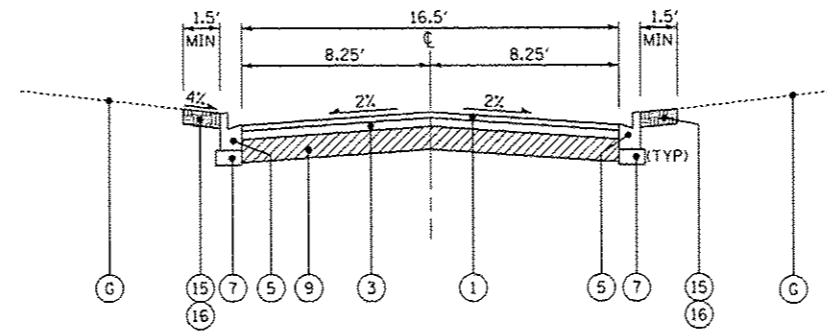
EXISTING TYPICAL SECTION

ROAD 2
STA 206+27 TO STA 207+91



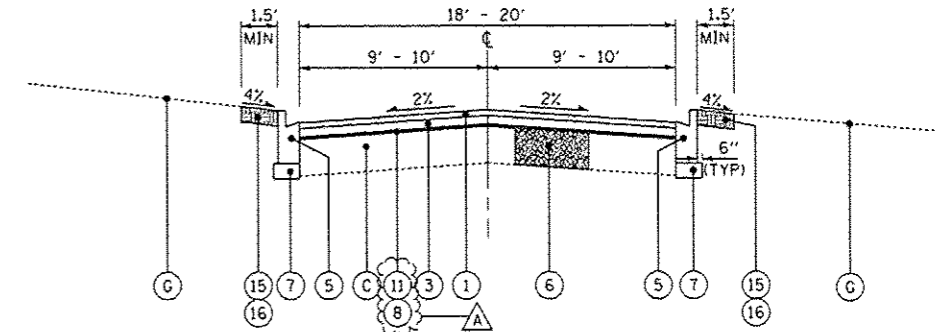
PROPOSED TYPICAL SECTION

ROAD 2
STA 200+10 TO STA 200+58
STA 201+18 TO STA 206+21



PROPOSED TYPICAL SECTION

ROAD 2
STA 200+58 TO STA 201+18



PROPOSED TYPICAL SECTION

ROAD 2
STA 206+27 TO STA 207+91

EXISTING LEGEND

- (A) EXISTING HMA SURFACE - 1 1/2" - 2 1/2"
- (AA) EXISTING HMA SURFACE - 4"
- (B) EXISTING PCC PAVEMENT - 6"
- (C) EXISTING AGGREGATE BASE - 1" - 8"
- (D) EXISTING CURB
- (E) EXISTING CURB AND GUTTER
- (F) EXISTING AGGREGATE SHOULDER - 3"± (WHERE IT EXISTS)
- (G) EXISTING GROUND
- (H) HOT-MIX ASPHALT SURFACE REMOVAL - 2"
- (I) CURB REMOVAL
- (J) COMBINATION CURB AND GUTTER REMOVAL
- (K) PAVEMENT REMOVAL
- (Hatched) ITEM TO BE REMOVED

PROPOSED LEGEND

- (1) HOT-MIX ASPHALT SURFACE COURSE, MIX "D", N50 - 1 1/2"
- (2) HOT-MIX ASPHALT SURFACE COURSE, MIX "D", N50 - 2"
- (3) HOT-MIX ASPHALT BINDER COURSE, IL-19.0, N50 - 2 1/4"
- (4) LEVELING BINDER (MACHINE METHOD), N50 - 1"
- (5) COMBINATION CONCRETE CURB AND GUTTER, TYPE B-6.12
- (6) BASE COURSE REMOVAL (SPECIAL) AND AGGREGATE BASE COURSE, TYPE B (AS DETERMINED BY THE ENGINEER)
- (7) AGGREGATE BASE COURSE, TYPE B - 4"
- (8) AGGREGATE BASE COURSE, TYPE B (±1")
- (9) CLASS D PATCHES - 6" (AS DETERMINED BY THE ENGINEER)
- (10) CLASS D PATCHES - 4" (AS DETERMINED BY THE ENGINEER)
- (11) PREPARATION OF BASE
- (12) GRADING AND SHAPING SHOULDERS
- (13) AGGREGATE WEDGE SHOULDER, TYPE B
- (14) PORTLAND CEMENT CONCRETE SURFACE REMOVAL - BUTT JOINT
- (15) TOPSOIL FURNISH AND PLACE, 4"
- (16) SEEDING, CLASS 1A

COPYRIGHT © 2014 BY BAXTER & WOODMAN, INC.
 ALL RIGHTS RESERVED. THIS DOCUMENT IS THE PROPERTY OF BAXTER & WOODMAN, INC. AND IS NOT TO BE REPRODUCED OR TRANSMITTED IN ANY FORM OR BY ANY MEANS, ELECTRONIC OR MECHANICAL, INCLUDING PHOTOCOPYING, RECORDING, OR BY ANY INFORMATION STORAGE AND RETRIEVAL SYSTEM.
 LICENSE NO. 187-00231 - EXPIRES 4/30/2015
 23JND
 5/23/2014
 2:04 PM
 \\C:\system\leko\LDOT\140183-W0-1-TypSect.dgn

BAXTER & WOODMAN

DESIGNED - DSH	REVISED - A 5-23-14
DRAWN - UKB	REVISED -
CHECKED - LDH	REVISED -
DATE - 05-06-14	FILE - 140183.W0-1-TypSect.dgn

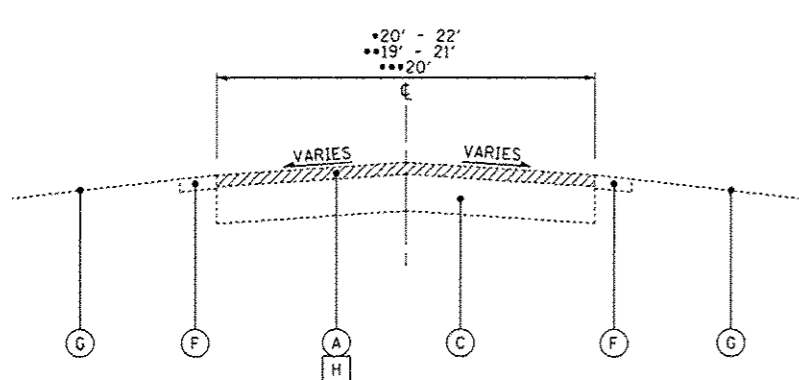
STATE OF ILLINOIS
DEPARTMENT OF TRANSPORTATION

ILLINOIS YOUTH CENTER - ST. CHARLES
EXISTING AND PROPOSED TYPICAL SECTIONS

SCALE: NONE

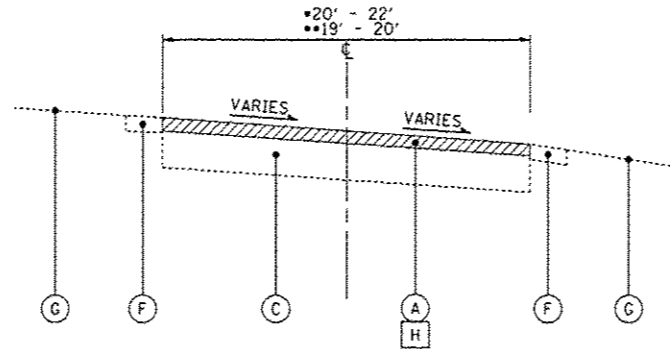
STA. TO STA.

F.A. RTE.	SECTION	COUNTY	TOTAL SHEETS	SHEET NO.
347	2014-04RS	KANE	25	8
C-91-374-14			CONTRACT NO. 60Y37	
FED. ROAD DIST. NO. 1 ILLINOIS FED. AID PROJECT				



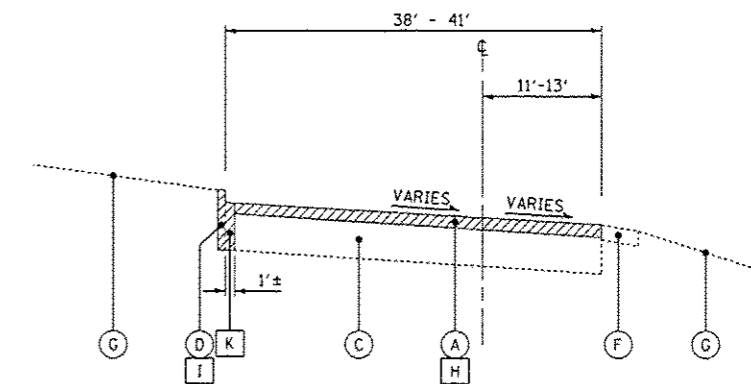
EXISTING TYPICAL SECTION

- ROAD 6 STA 608+89 TO STA 611+17
- ROAD 6 STA 616+03 TO STA 616+90
- ROAD 6A STA 625+12 TO STA 626+40



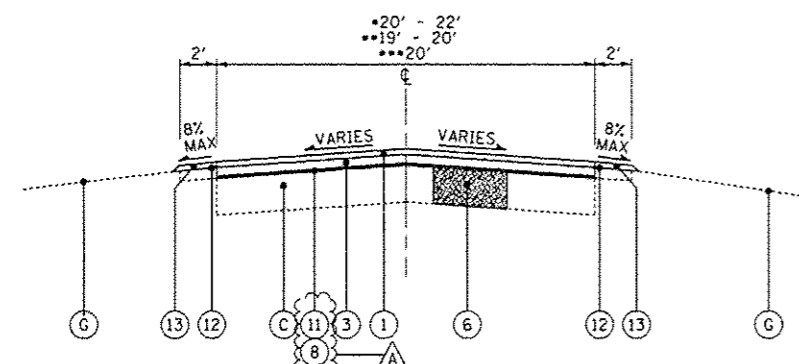
EXISTING TYPICAL SECTION

- ROAD 6
- ROAD 6 STA 611+17 TO STA 614+48
- ROAD 6 STA 616+90 TO STA 620+55



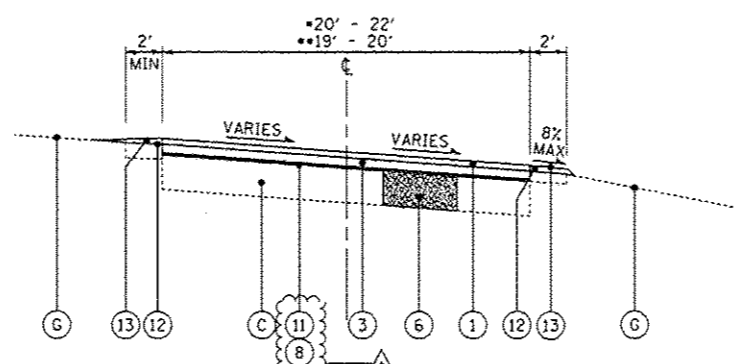
EXISTING TYPICAL SECTION

- ROAD 6
- STA 614+48 TO STA 616+03



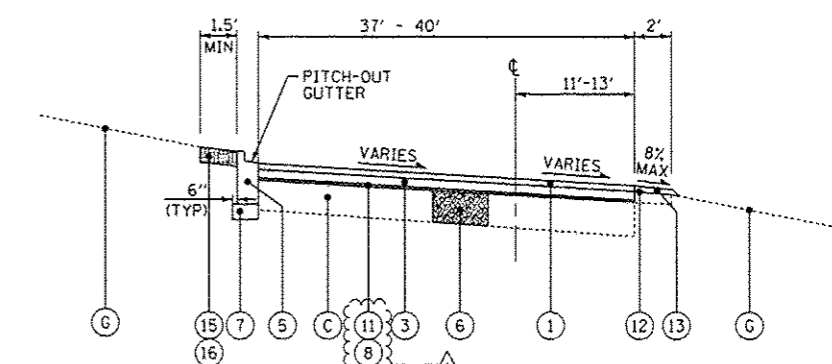
PROPOSED TYPICAL SECTION

- ROAD 6 STA 608+89 TO STA 611+17
- ROAD 6 STA 616+03 TO STA 616+90
- ROAD 6A STA 625+12 TO STA 626+40



PROPOSED TYPICAL SECTION

- ROAD 6
- ROAD 6 STA 611+17 TO STA 614+48
- ROAD 6 STA 616+90 TO STA 620+55



PROPOSED TYPICAL SECTION

- ROAD 6
- STA 614+48 TO STA 616+03

EXISTING LEGEND

- (A) EXISTING HMA SURFACE - 1 1/2" - 2 1/2"
- (AA) EXISTING HMA SURFACE - 4"
- (B) EXISTING PCC PAVEMENT - 6"
- (C) EXISTING AGGREGATE BASE - 1" - 8"
- (D) EXISTING CURB
- (E) EXISTING CURB AND GUTTER
- (F) EXISTING AGGREGATE SHOULDER - 3"± (WHERE IT EXISTS)
- (G) EXISTING GROUND
- (H) HOT-MIX ASPHALT SURFACE REMOVAL - 2"
- (I) CURB REMOVAL
- (J) COMBINATION CURB AND GUTTER REMOVAL
- (K) PAVEMENT REMOVAL
- [Hatched Box] ITEM TO BE REMOVED

PROPOSED LEGEND

- (1) HOT-MIX ASPHALT SURFACE COURSE, MIX "D", NSO - 1 1/2"
- (2) HOT-MIX ASPHALT SURFACE COURSE, MIX "D", NSO - 2"
- (3) HOT-MIX ASPHALT BINDER COURSE, IL-19.0, NSO - 2 1/4"
- (4) LEVELING BINDER (MACHINE METHOD), NSO - 1"
- (5) COMBINATION CONCRETE CURB AND GUTTER, TYPE B-6.12
- (6) BASE COURSE REMOVAL (SPECIAL) AND AGGREGATE BASE COURSE, TYPE B (AS DETERMINED BY THE ENGINEER)
- (7) AGGREGATE BASE COURSE, TYPE B - 4"
- (8) AGGREGATE BASE COURSE, TYPE B (±1")
- (9) CLASS D PATCHES - 6" (AS DETERMINED BY THE ENGINEER)
- (10) CLASS D PATCHES - 4" (AS DETERMINED BY THE ENGINEER)
- (11) PREPARATION OF BASE
- (12) GRADING AND SHAPING SHOULDERS
- (13) AGGREGATE WEDGE SHOULDER, TYPE B
- (14) PORTLAND CEMENT CONCRETE SURFACE REMOVAL - BUTT JOINT
- (15) TOPSOIL FURNISH AND PLACE, 4"
- (16) SEEDING, CLASS 1A

COPYRIGHT © 2014 BY BAXTER & WOODMAN, INC.
 STATE OF ILLINOIS - PROFESSIONAL DESIGN FIRM
 LICENSE NO. 184-02029 - EXPIRES 4/30/2015
 201405 2014 5/23/2014
 I:\C:\stcharles\140183\140183-W0-1-TypSect.dgn

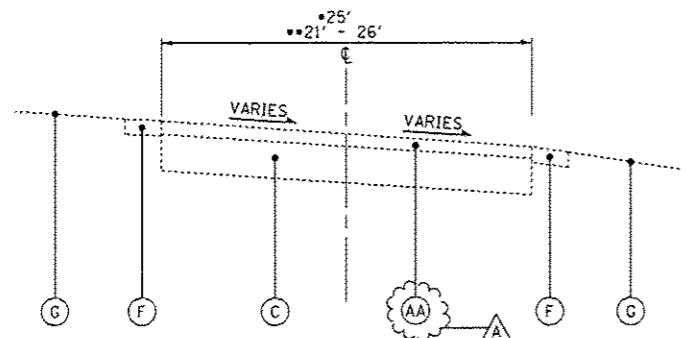
DESIGNED - DSH	REVISED - A 5-23-14
DRAWN - UKB	REVISED -
CHECKED - LDH	REVISED -
DATE - 05-06-14	FILE - 140183.W0-1-TypSect.dgn

STATE OF ILLINOIS
DEPARTMENT OF TRANSPORTATION

ILLINOIS YOUTH CENTER - ST. CHARLES
EXISTING AND PROPOSED TYPICAL SECTIONS

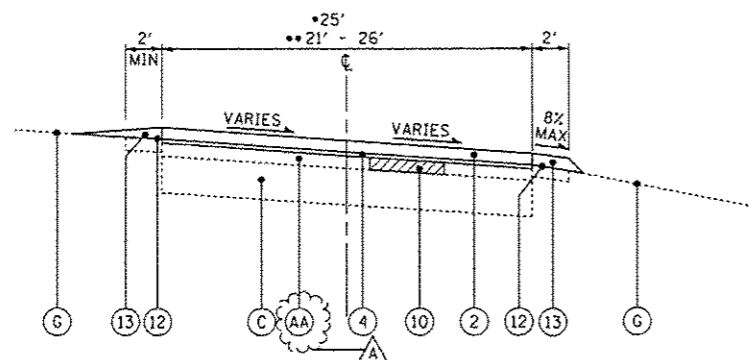
F.A. RTE.	SECTION	COUNTY	TOTAL SHEETS	SHEET NO.
347	2014-04RS	KANE	25	11
C-91-374-14			CONTRACT NO. 60Y37	
FED. ROAD DIST. NO. 1 ILLINOIS FED. AID PROJECT				

SCALE: NONE STA. TO STA.



EXISTING TYPICAL SECTION

ROAD 7
 • ROAD 7 STA 700+10 TO STA 703+04
 •• ROAD 7 STA 703+04 TO STA 707+50



PROPOSED TYPICAL SECTION

ROAD 7
 • ROAD 7 STA 700+10 TO STA 703+04
 •• ROAD 7 STA 703+04 TO STA 707+50

EXISTING LEGEND

- (A) EXISTING HMA SURFACE - 1 1/2" - 2 1/2"
- (AA) EXISTING HMA SURFACE - 4"
- (B) EXISTING PCC PAVEMENT - 6"
- (C) EXISTING AGGREGATE BASE - 1" - 8"
- (D) EXISTING CURB
- (E) EXISTING CURB AND GUTTER
- (F) EXISTING AGGREGATE SHOULDER - 3"± (WHERE IT EXISTS)
- (G) EXISTING GROUND
- (H) HOT-MIX ASPHALT SURFACE REMOVAL - 2"
- (I) CURB REMOVAL
- (J) COMBINATION CURB AND GUTTER REMOVAL
- (K) PAVEMENT REMOVAL
- [Hatched Box] ITEM TO BE REMOVED

PROPOSED LEGEND

- (1) HOT-MIX ASPHALT SURFACE COURSE, MIX "D", N50 - 1 1/2"
- (2) HOT-MIX ASPHALT SURFACE COURSE, MIX "D", N50 - 2"
- (3) HOT-MIX ASPHALT BINDER COURSE, IL-19.0, N50 - 2 1/4"
- (4) LEVELING BINDER (MACHINE METHOD), N50 - 1"
- (5) COMBINATION CONCRETE CURB AND GUTTER, TYPE B-6.12
- (6) BASE COURSE REMOVAL (SPECIAL) AND AGGREGATE BASE COURSE, TYPE B (AS DETERMINED BY THE ENGINEER)
- (7) AGGREGATE BASE COURSE, TYPE B - 4"
- (8) AGGREGATE BASE COURSE, TYPE B (±1")
- (9) CLASS D PATCHES - 6" (AS DETERMINED BY THE ENGINEER)
- (10) CLASS D PATCHES - 4" (AS DETERMINED BY THE ENGINEER)
- (11) PREPARATION OF BASE
- (12) GRADING AND SHAPING SHOULDERS
- (13) AGGREGATE WEDGE SHOULDER, TYPE B
- (14) PORTLAND CEMENT CONCRETE SURFACE REMOVAL - BUTT JOINT
- (15) TOPSOIL FURNISH AND PLACE, 4"
- (16) SEEDING, CLASS 1A

COPYRIGHT © 2014 BY BAXTER & WOODMAN, INC.
 ALL RIGHTS RESERVED. ILLINOIS PROFESSIONAL ENGINEERING LICENSE NO. 124-002191-15, EXPIRES 12/31/2015
 2200 W. 111th Street, Moline, IL 61704-3001
 309-398-2000 FAX 309-398-2005
 5/23/2014 2:08 PM
 \\s01c01\work\140183\140183-W0-1-TypSect.dgn



DESIGNED - DSH	REVISED - A 5-23-14
DRAWN - UKB	REVISED -
CHECKED - LDH	REVISED -
DATE - 05-06-14	FILE - 140183_W0-1-TypSect.dgn

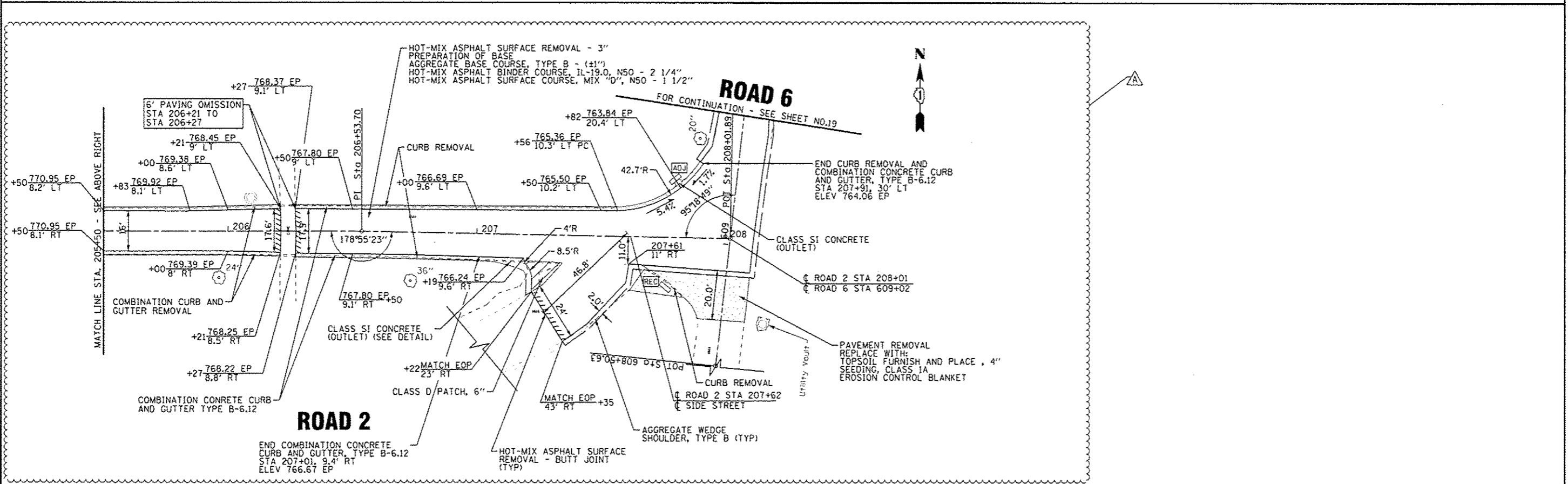
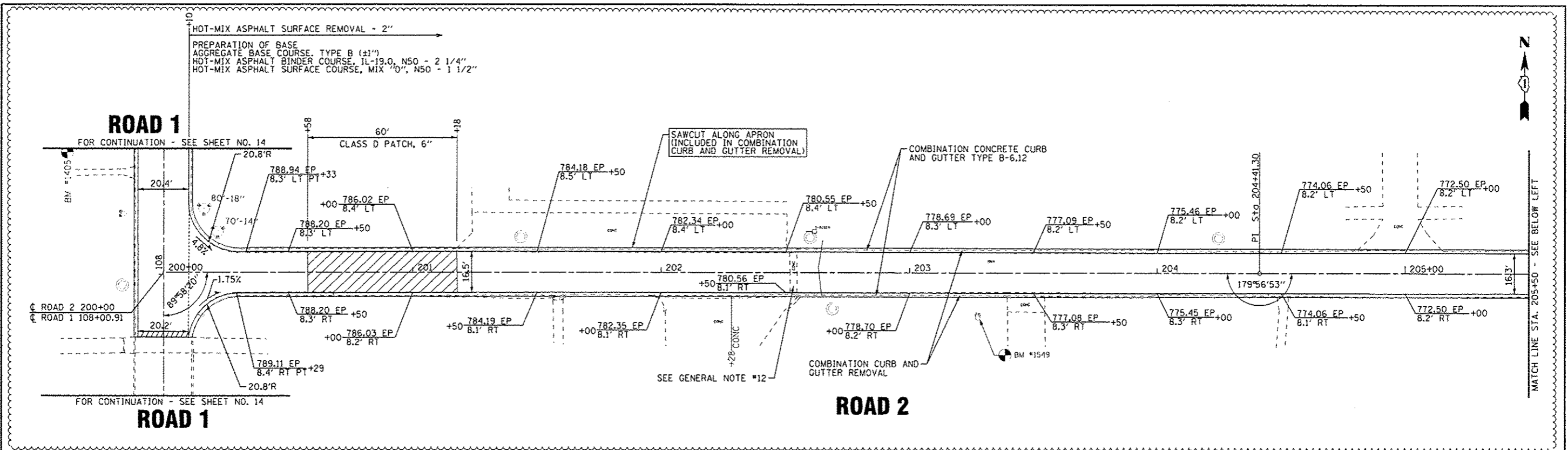
STATE OF ILLINOIS
 DEPARTMENT OF TRANSPORTATION

ILLINOIS YOUTH CENTER - ST. CHARLES
 EXISTING AND PROPOSED TYPICAL SECTIONS

SCALE: NONE

STA. TO STA.

F.A. RTE.	SECTION	COUNTY	TOTAL SHEETS	SHEET NO.
347	2014-04RS	KANE	25	12
C-91-374-14			CONTRACT NO. 60Y37	
FED. ROAD DIST. NO. 1 ILLINOIS FED. AID PROJECT				



COPYRIGHT © 2014 BY BAXTER & WOODMAN, INC.
 ALL RIGHTS RESERVED. NO PART OF THIS DOCUMENT IS TO BE REPRODUCED OR TRANSMITTED IN ANY FORM OR BY ANY MEANS, ELECTRONIC OR MECHANICAL, INCLUDING PHOTOCOPYING, RECORDING, OR BY ANY INFORMATION STORAGE AND RETRIEVAL SYSTEM.
 BAXTER & WOODMAN, INC. 140183.W0-1-Plan2.dgn
 2/25/14 2:25 PM

DESIGNED - DSH	REVISED - 5-23-14
DRAWN - UKB	REVISED -
CHECKED - LDH	REVISED -
DATE - 05-06-14	FILE - 140183.W0-1-Plan2.dgn

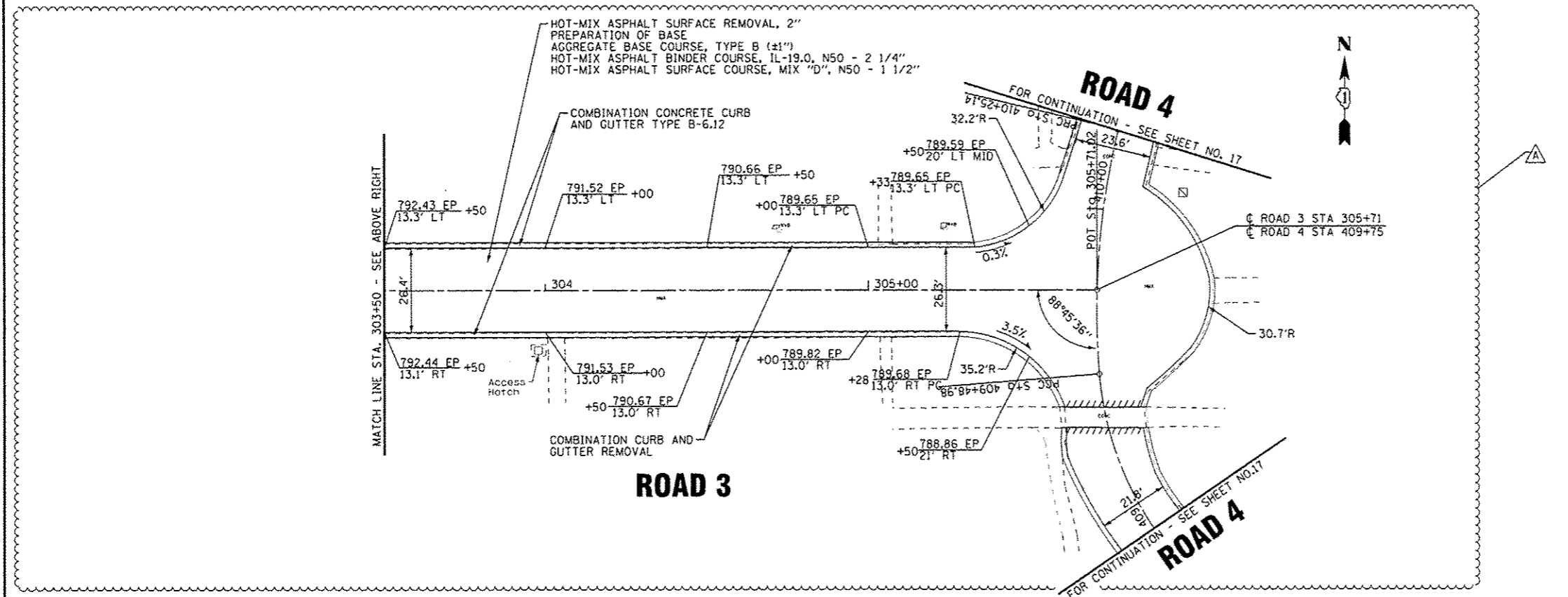
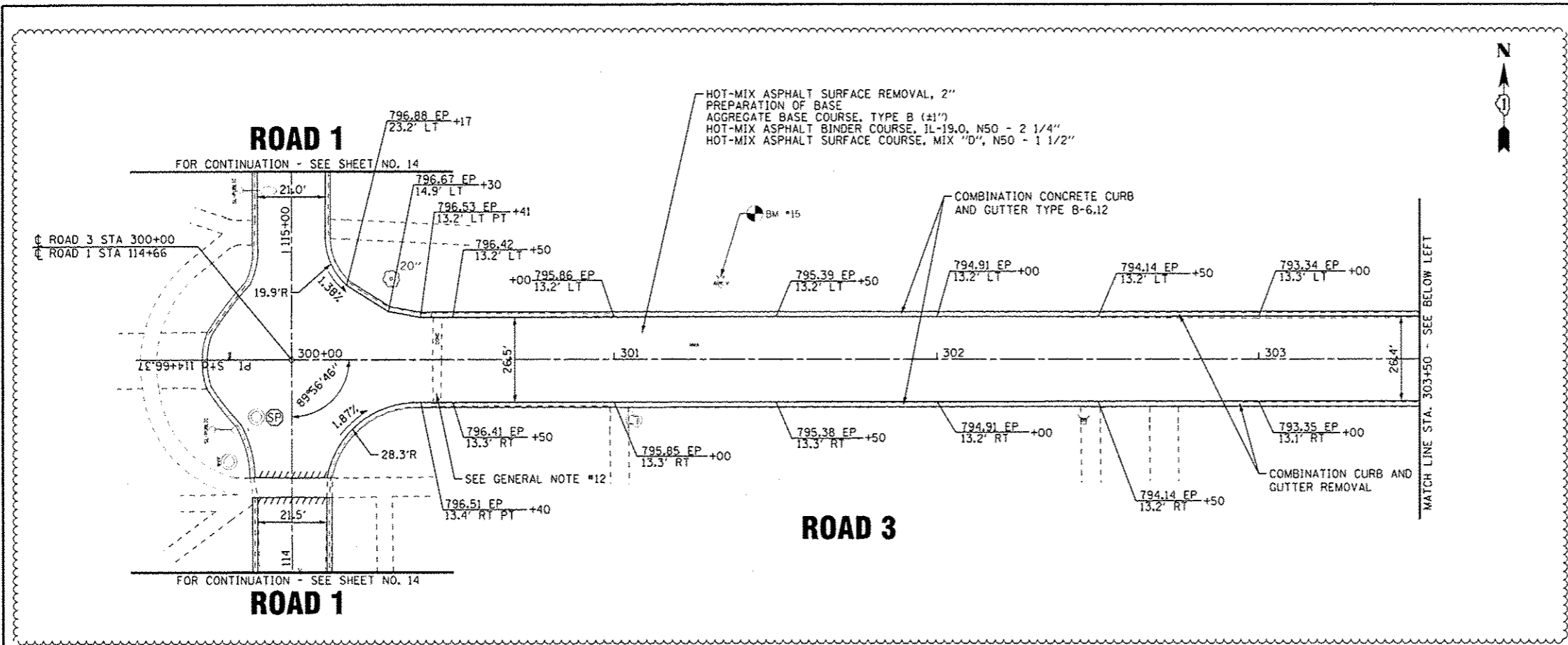
STATE OF ILLINOIS
DEPARTMENT OF TRANSPORTATION

ILLINOIS YOUTH CENTER - ST. CHARLES
ROADWAY PLAN - ROAD 2

SCALE: 1"=20'

STA. 200+00 TO STA. 208+01

F.A. RTE. 347	SECTION 2014-04RS	COUNTY KANE	TOTAL SHEETS 25	SHEET NO. 15
C-91-374-14			CONTRACT NO. 60Y37	
FED. ROAD DIST. NO. 1 ILLINOIS FED. AID PROJECT				



COPYRIGHT © 2014 BY BAXTER & WOODMAN, INC.
 STATE OF ILLINOIS - PROFESSIONAL DESIGN FIRM
 LICENSE NO. 184-00023 - EXPIRES 4/30/2015
 11101 S. WOODLAND AVE., SUITE 200, CHICAGO, IL 60648
 5/23/2014 2:12:28 PM 140183.W0-1-Plan3.dgn

DESIGNED - DSH	REVISED - A 5-23-14
DRAWN - UKB	REVISED -
CHECKED - LDH	REVISED -
DATE - 05-06-14	FILE - 140183.W0-1-Plan3.dgn

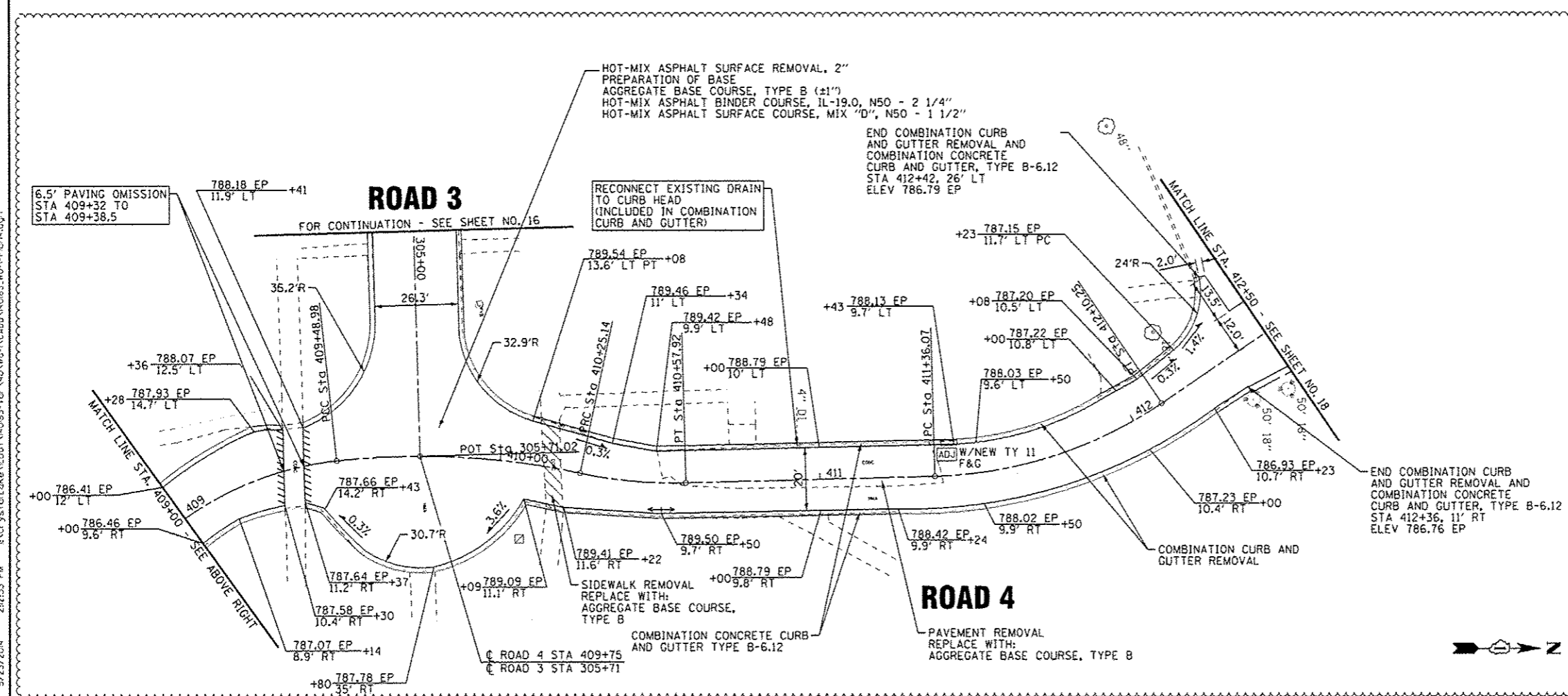
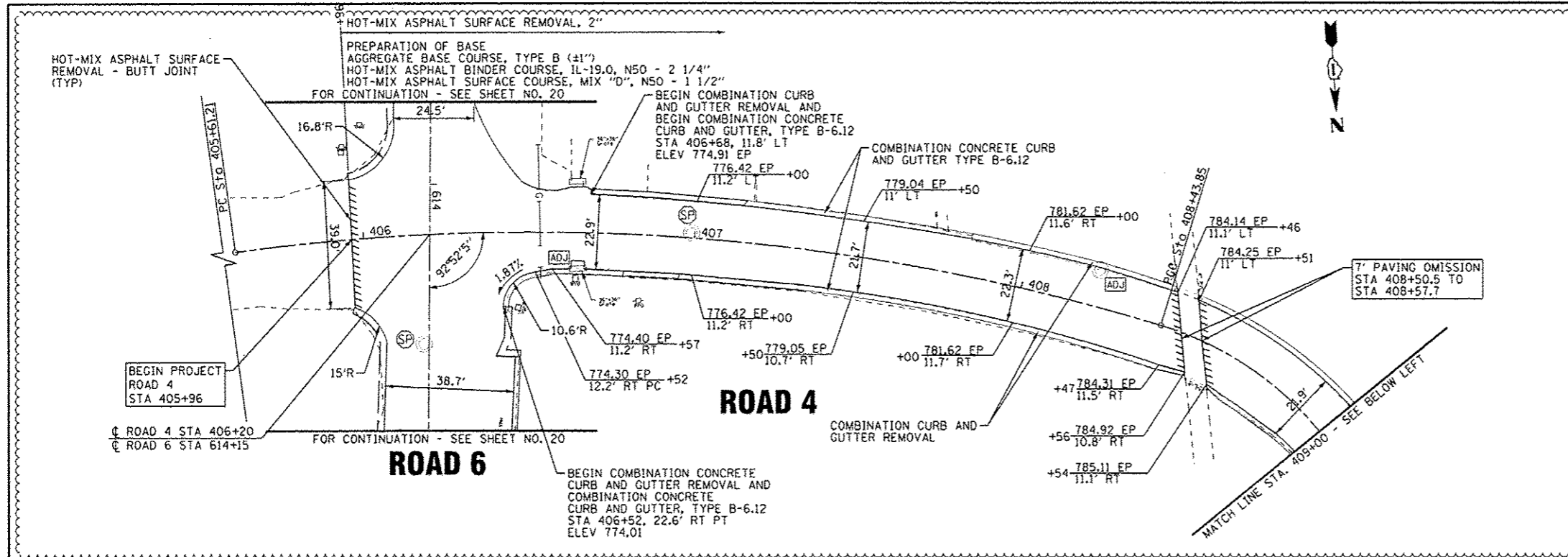
STATE OF ILLINOIS
DEPARTMENT OF TRANSPORTATION

ILLINOIS YOUTH CENTER - ST. CHARLES
ROADWAY PLAN - ROAD 3

SCALE: 1"=20'

STA. 300+00 TO STA. 305+71

F.A. RTE.	SECTION	COUNTY	TOTAL SHEETS	SHEET NO.
347	2014-04RS	KANE	25	16
C-91-374-14			CONTRACT NO. 60Y37	
FED. ROAD DIST. NO. 1 ILLINOIS FED. AID PROJECT				



COPYRIGHT © 2014 BY BAXTER & WOODMAN, INC.
 STATE OF ILLINOIS PROFESSIONAL ENGINEERING LICENSE NO. 184-000731 - EXPIRES 12/31/2015
 LICENSE NO. 184-000731 - EXPIRES 12/31/2015
 2/28/2014 5:23:23 PM
 I:\C:\STG\140183\W0-1-Plan4.dgn

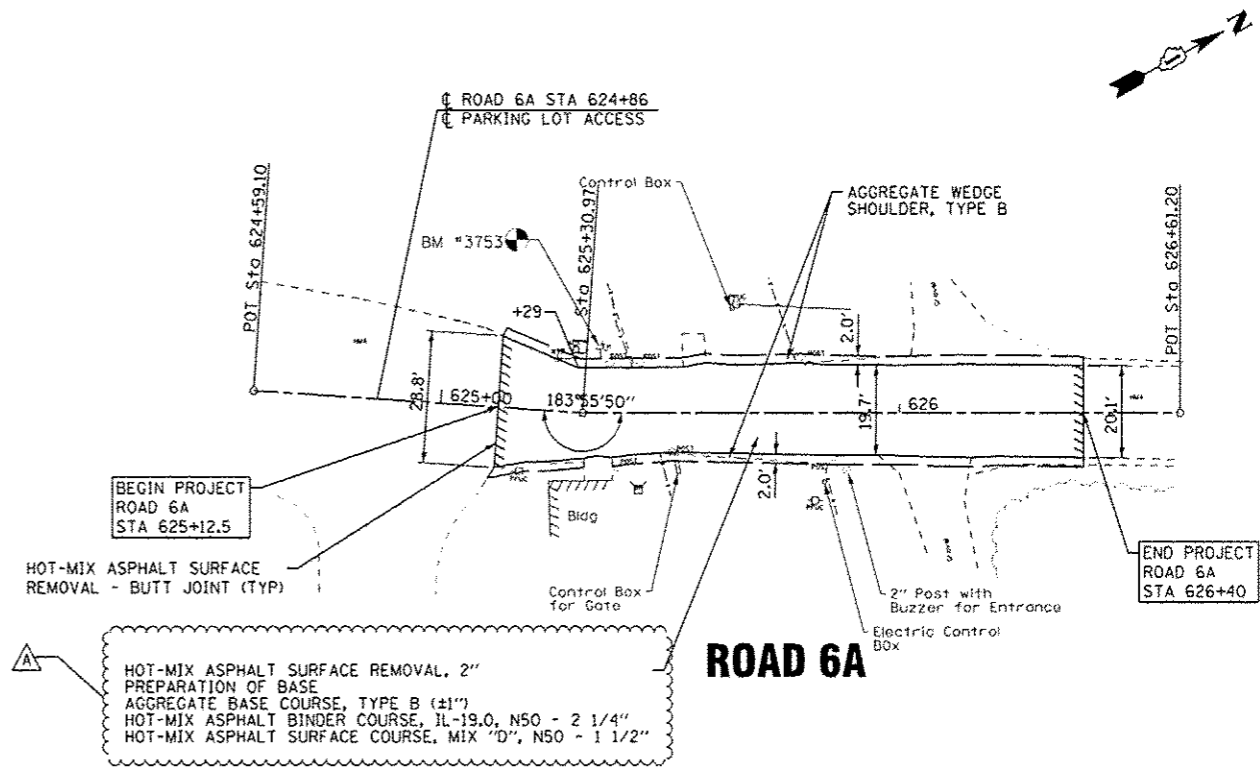
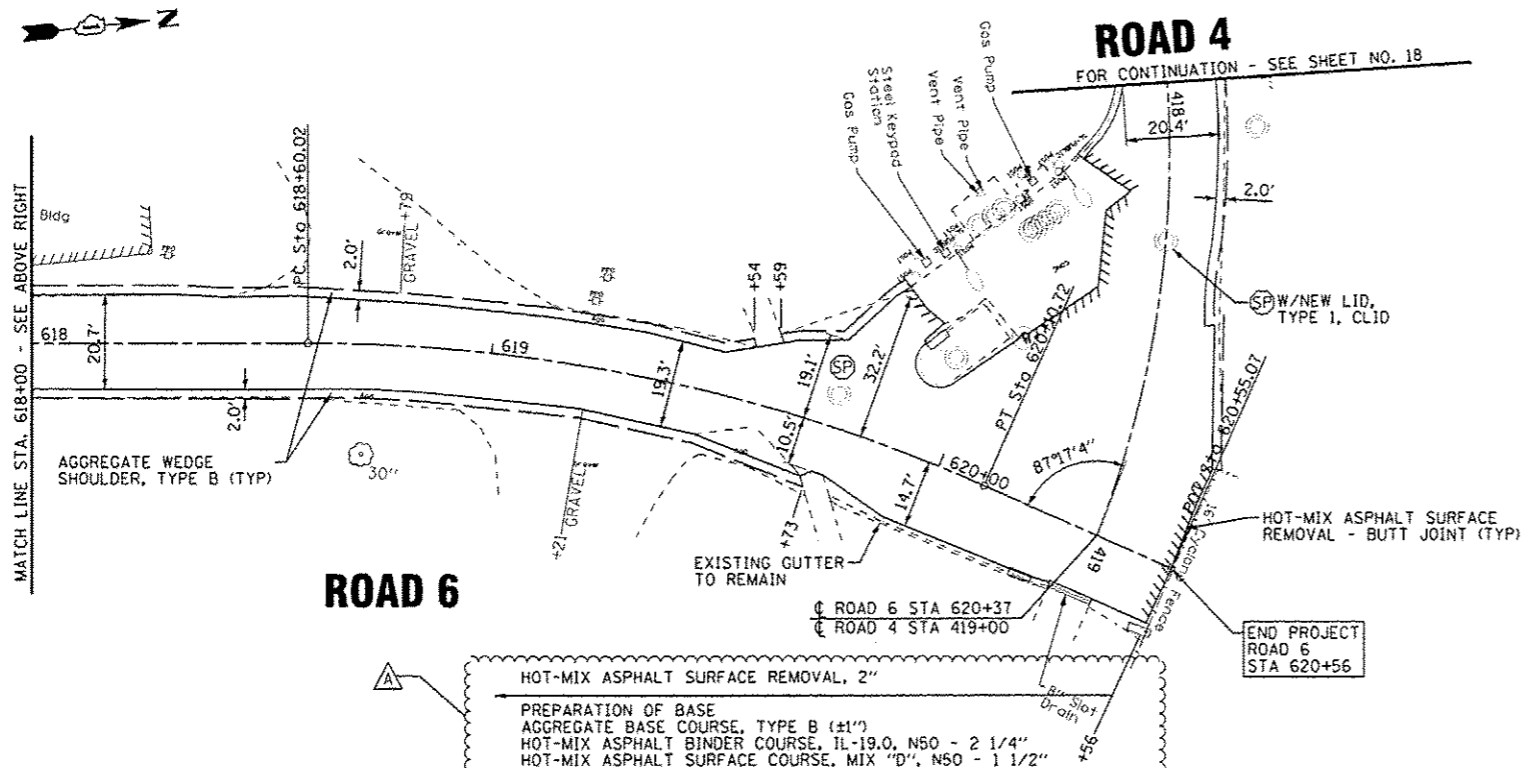
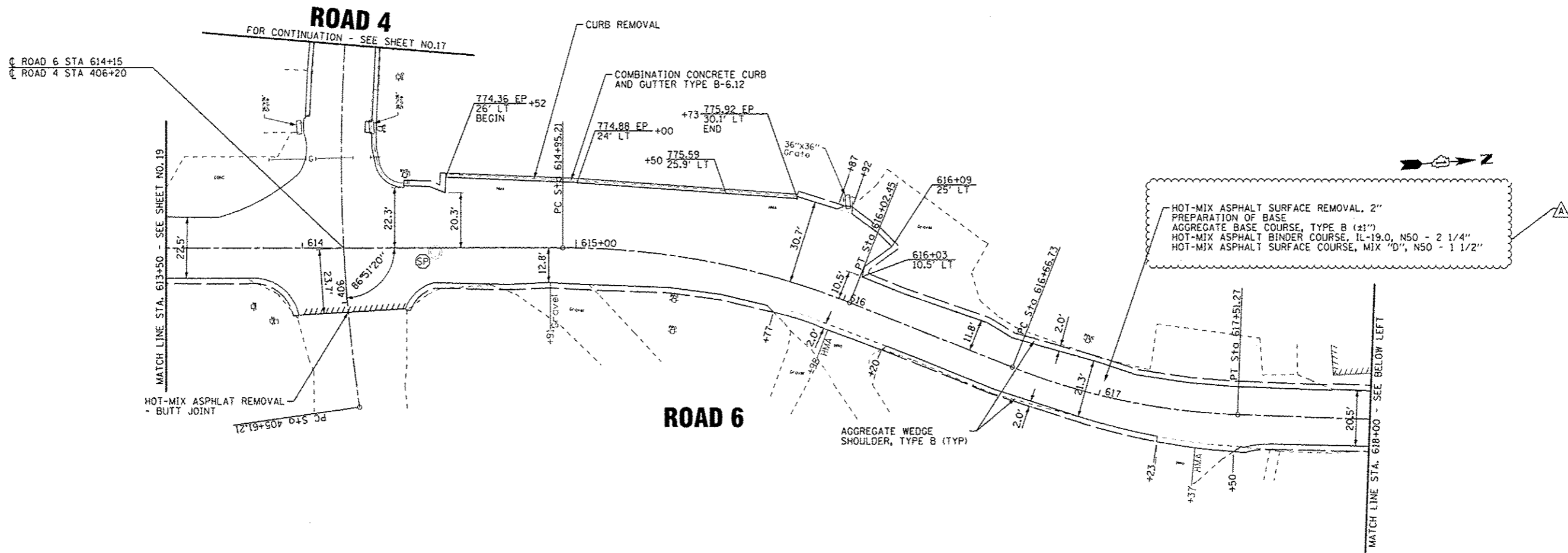
DESIGNED - DSH	REVISED - A 5-23-14
DRAWN - UKB	REVISED -
CHECKED - LDH	REVISED -
DATE - 05-06-14	FILE - 140183.W0-1-Plan4.dgn

**STATE OF ILLINOIS
DEPARTMENT OF TRANSPORTATION**

**ILLINOIS YOUTH CENTER - ST. CHARLES
ROADWAY PLAN - ROAD 4**

F.A. RTE.	SECTION	COUNTY	TOTAL SHEETS	SHEET NO.
347	2014-04RS	KANE	25	17
C-91-374-14		CONTRACT NO. 60Y37		
FED. ROAD DIST. NO. 1 ILLINOIS FED. AID PROJECT				

SCALE: 1"=20' STA. 405+61 TO STA. 412+50



COPYRIGHT © 2014 BY BAXTER & WOODMAN, INC.
 STATE OF ILLINOIS - PROFESSIONAL DESIGN FIRM
 LICENSE NO. 184-00021 - EXPIRES 4/30/2015
 5/23/2014 5:23:49 PM 5/23/2014
 ...\\s01\p\proj\140183-W0-1-Plan7.dgn
 ...\\s01\p\proj\140183-W0-1-Plan7.dgn
 ...\\s01\p\proj\140183-W0-1-Plan7.dgn

BAXTER & WOODMAN

DESIGNED - DSH	REVISED - A 5-23-14
DRAWN - UKB	REVISED
CHECKED - LDH	REVISED
DATE - 05-06-14	FILE - 140183.W0-1-Plan7.dgn

STATE OF ILLINOIS
DEPARTMENT OF TRANSPORTATION

ILLINOIS YOUTH CENTER - ST. CHARLES
ROADWAY PLAN - ROAD 6 & 6A

SCALE: 1"=20'

STA. 613+50 TO STA. 626+61

F.A. RTE. 347	SECTION 2014-04RS	COUNTY KANE	TOTAL SHEETS 25	SHEET NO. 20
C-91-374-14			CONTRACT NO. 60Y37	
FED. ROAD DIST. NO. 1 ILLINOIS FED. AID PROJECT				