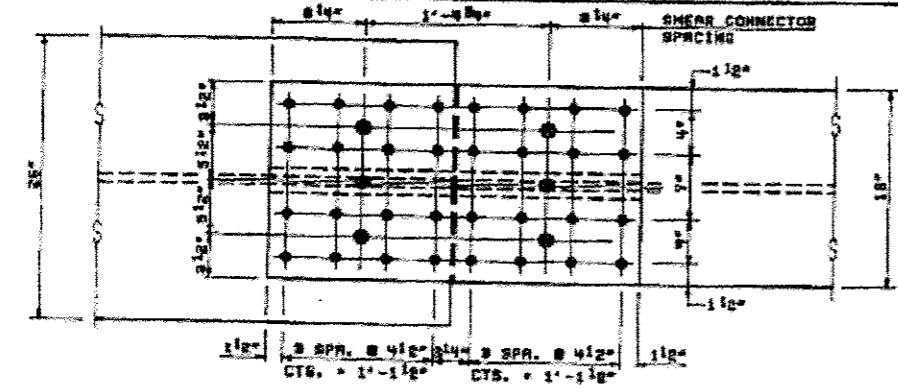
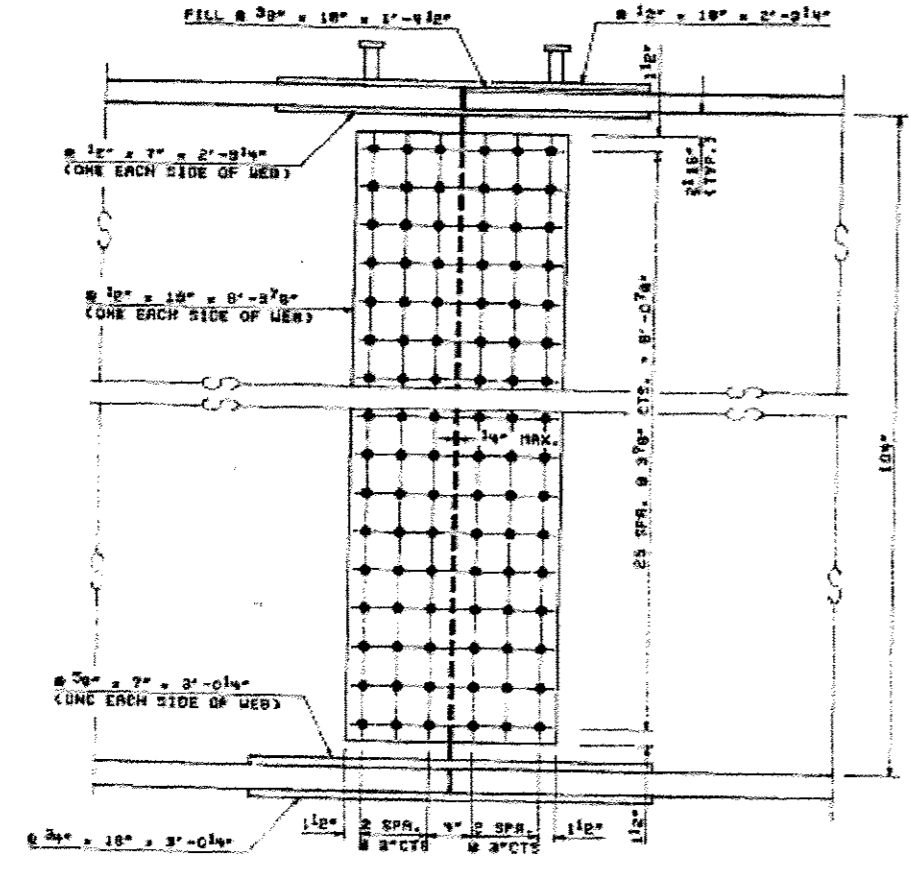


FOR INFORMATION ONLY

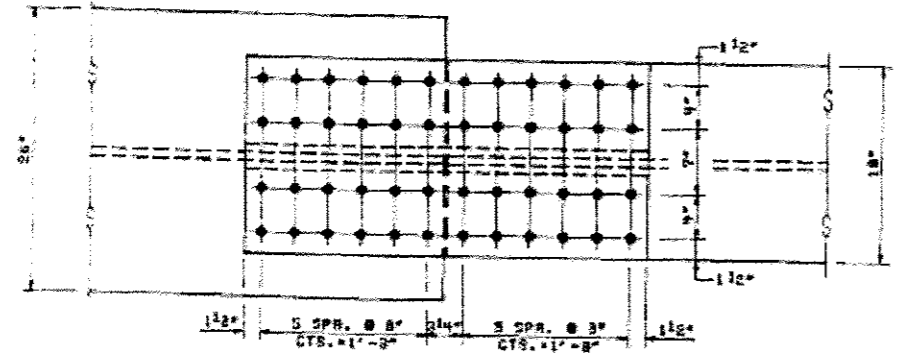
SHEET NO. 13 OF 30		ROUTE NO.	SECT.	COUNTY	SHEET NO.	TOTAL SHEETS
		F.A. RTE.	228B-	LEE & OGLE	86	37
		FED. AID PROJ. NO.	7	ILLINOIS	FED. AID PROJECT	
ST77-807-742(65)						



TOP PLAN

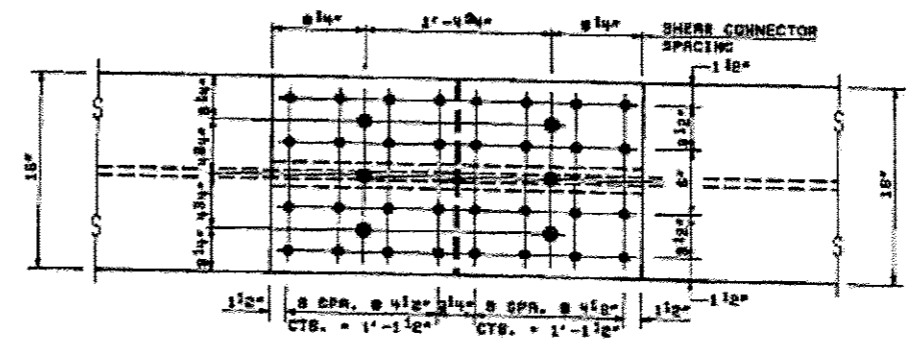


ELEVATION

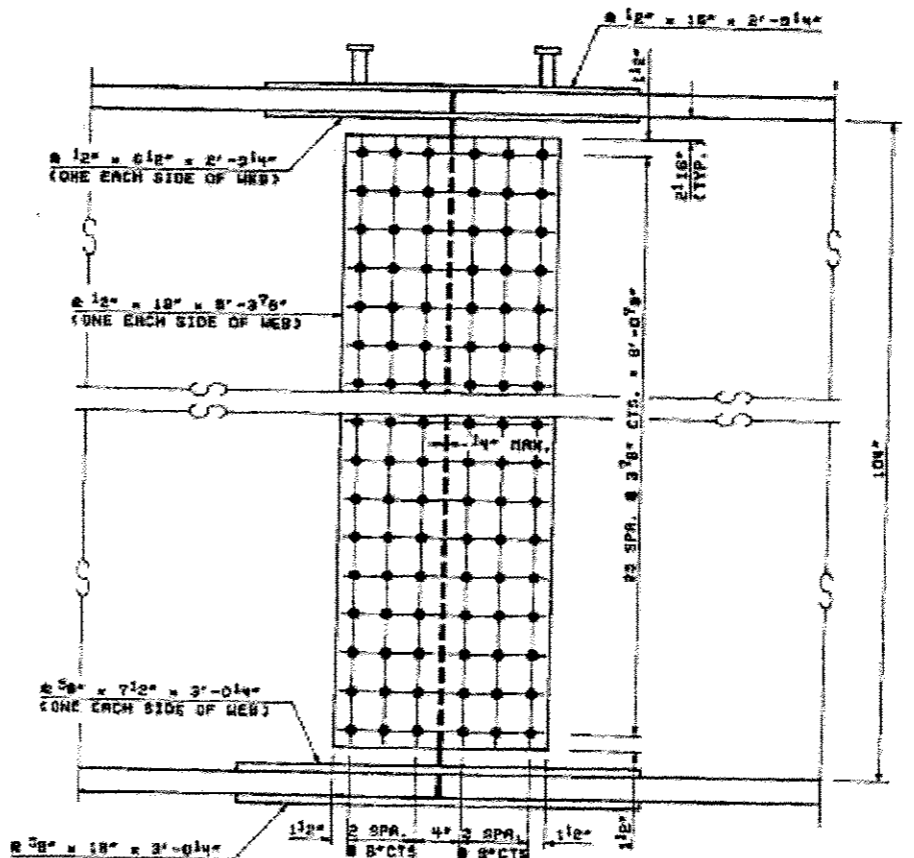


BOTTOM PLAN

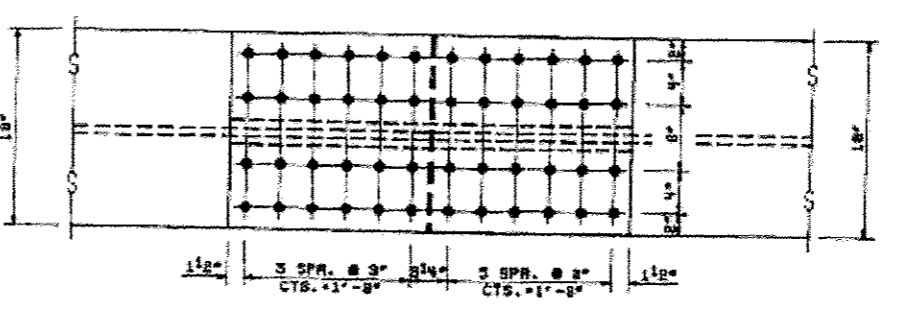
FIELD SPLICES #3 & #6



TOP PLAN

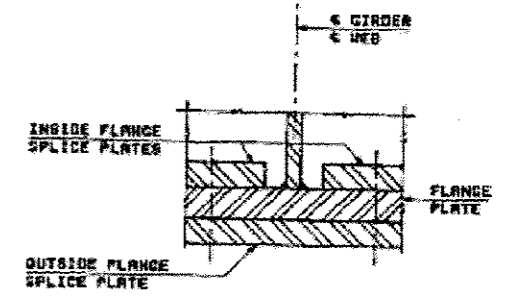


ELEVATION



BOTTOM PLAN

FIELD SPLICES #1 & #8



TYPICAL SPLICE SECTION

- NOTES:**
1. FASTENERS SHALL BE HIGH STRENGTH BOLTS. BOLTS 7/8\"/>
 - 2. SHEAR CONNECTOR INDICATED BY \odot IN TOP PLAN.

REVISION	DATE	DESCRIPTION
STATE OF ILLINOIS DEPARTMENT OF TRANSPORTATION		
FIELD SPLICES & DETAILS		
GRAND DETOUR BRIDGE OVER ROCK RIVER F.A. RTE. 742 SECTION 398B-1 STA. 1228+96 LEE & OGLE COUNTIES STRUCTURE NUMBER 052-0063		
STEINMAN BOYNTON INC. CONSULTING ENGINEERS - CHICAGO, ILLINOIS		
DRAWING NO. 60-15	SCALE N.T.S.	DATE 4-19-93
		SHEET NO. 37

CHECKED BY: MRP

DRAWN BY: G.S.

DESIGNED -	REVISED -	STATE OF ILLINOIS DEPARTMENT OF TRANSPORTATION	EXISTING BRIDGE PLANS SN: 052-0063	F.A.P. RTE.	SECTION	COUNTY	TOTAL SHEETS	SHEET NO.
DRAWN -	REVISED -			IL 2 D2 BRIDGE PAINTING 2014-	LEE / OGLE	25	15	
CHECKED -	REVISED -			CONTRACT NO. 64J52				
DATE -	REVISED -			ILLINOIS				