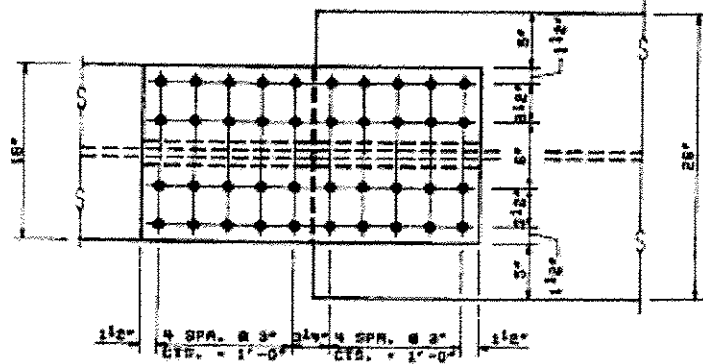


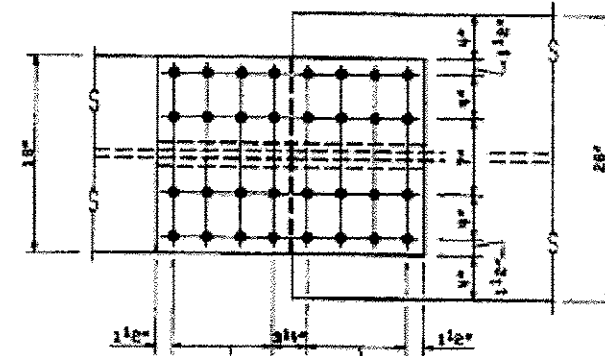
# FOR INFORMATION ONLY

SHEET NO. 14 OF 30

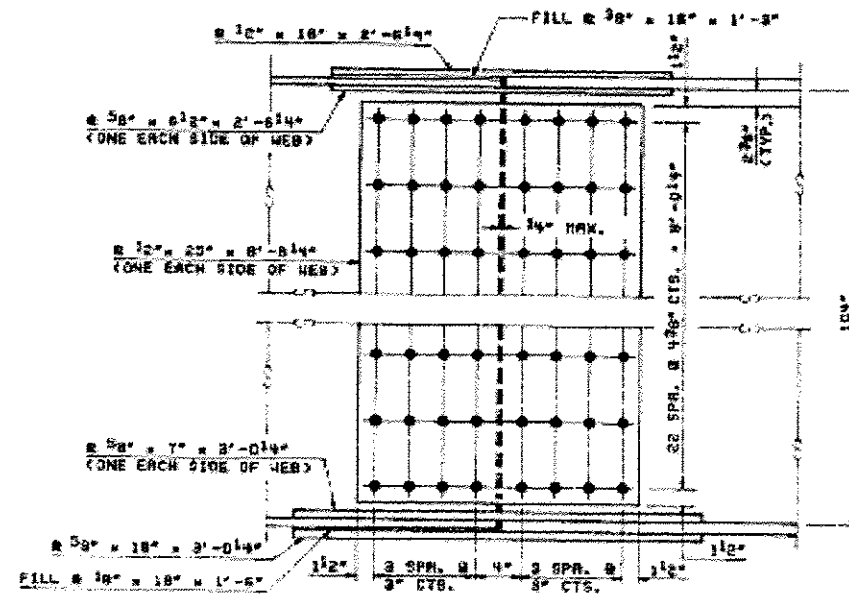
ROUTE NO.	SECT.	COUNTY	SHEET NO.	TOTAL SHEETS
F.A. 742	398B-1	LEE & OGLE	86	38
FED. ROAD DIST. NO. 7	ILLINOIS FED. AID PROJECT		STPF-BRF-742(25)	



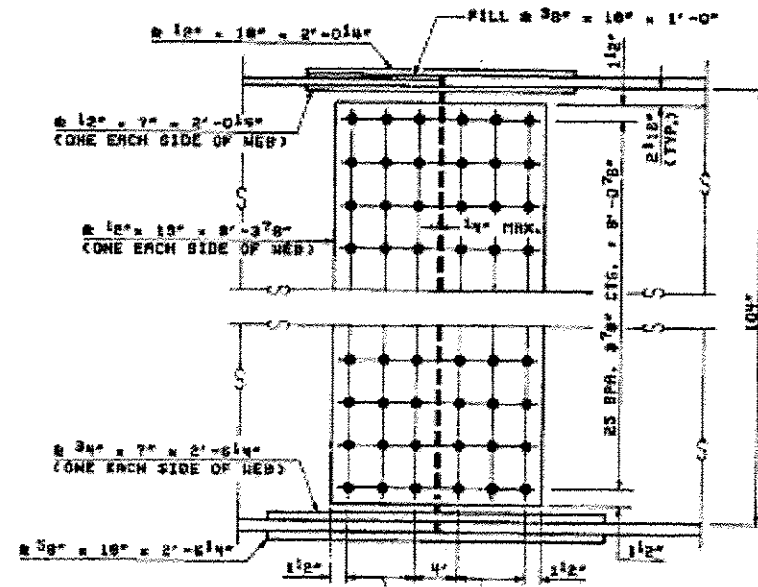
TOP PLAN



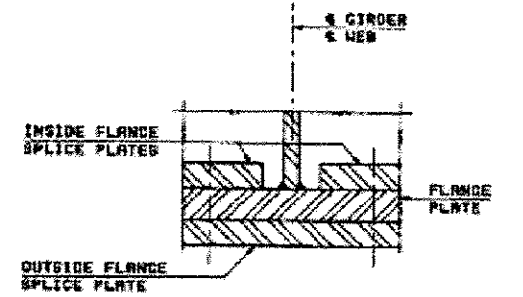
TOP PLAN



ELEVATION



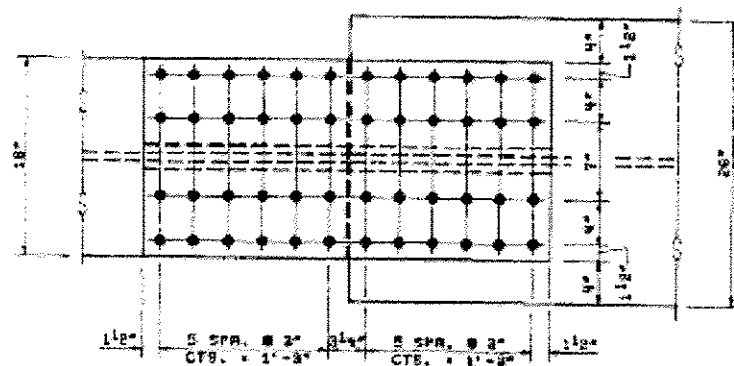
ELEVATION



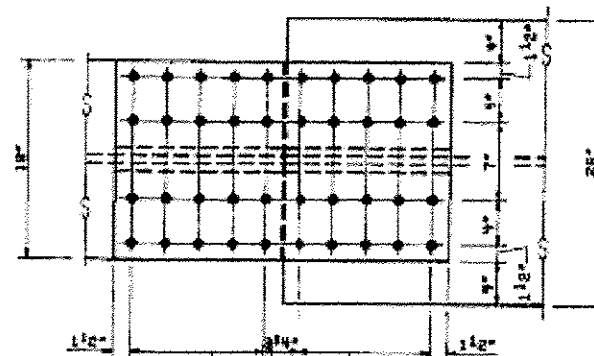
TYPICAL SPLICE SECTION

**NOTES:**

1. FASTENERS SHALL BE HIGH STRENGTH BOLTS. BOLTS 7/8" DIA., OPEN HOLES 1 1/8" DIA.
2. ALL SPLICE PLATES SHALL BE A3070 A570, GRADE 50 AND SHALL CONFORM, EXCEPT FILLER PLATES, TO THE SUPPLEMENTAL REQUIREMENTS FOR NOTCH TOUGHNESS ZONE B.



BOTTOM PLAN  
FIELD SPLICES #2 & #7



BOTTOM PLAN  
FIELD SPLICES #4 & #5

REVISION	DATE	DESCRIPTION
STATE OF ILLINOIS DEPARTMENT OF TRANSPORTATION		
FIELD SPLICES & DETAILS		
GRAND DETOUR BRIDGE OVER ROCK RIVER F.A. RTE. 742 SECTION 398B-1 STA. 1228+96 LEE & OGLE COUNTIES STRUCTURE NUMBER 052-0063		
STEINMAN BOYNTON INC. CONSULTING ENGINEERS - CHICAGO, ILLINOIS		
DRAWING NO. GD-16	SCALE N.T.S.	DATE 4-19-93
		SHEET NO. 38

CHECKED BY: SBR  
 DRAFTED BY: SBR  
 CHECKED BY: SBR  
 ESTIMATED BY: SBR  
 CHECKED BY: SBR

DESIGNED -	REVISED -
DRAWN -	REVISED -
CHECKED -	REVISED -
DATE -	REVISED -

STATE OF ILLINOIS  
DEPARTMENT OF TRANSPORTATION

EXISTING BRIDGE PLANS  
SN: 052-0063

F.A.P. RTE.	SECTION	COUNTY	TOTAL SHEETS	SHEET NO.
IL 2 D2 BRIDGE PAINTING 2014		LEE / OGLE	25	16
			CONTRACT NO. 64J52	
ILLINOIS				