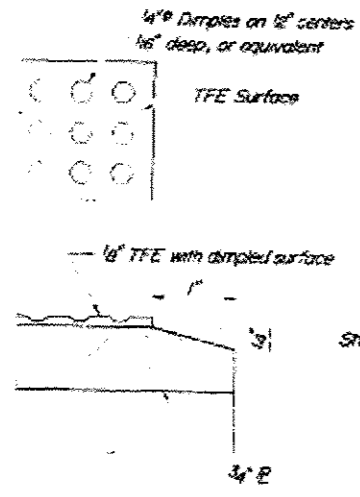


FOR INFORMATION ONLY

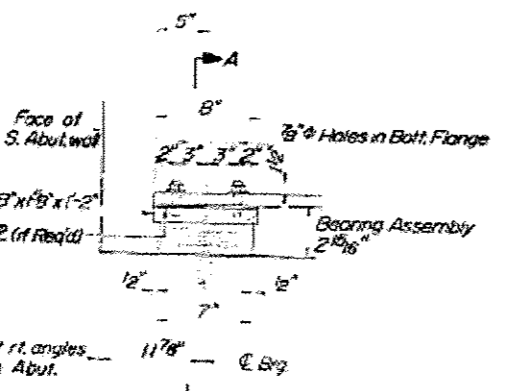
DATE	REVISION	QUANTITY	TOTAL SHEETS	SHEET NO.
#	37 BR-3	OGLE	40	24

Sheet 10
16 Sheets

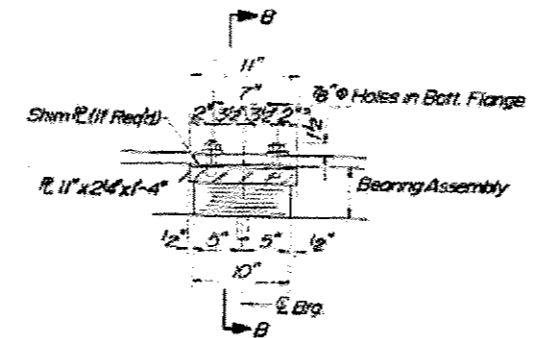
* - FA. RTE. 742 (IL. RTE. 2)



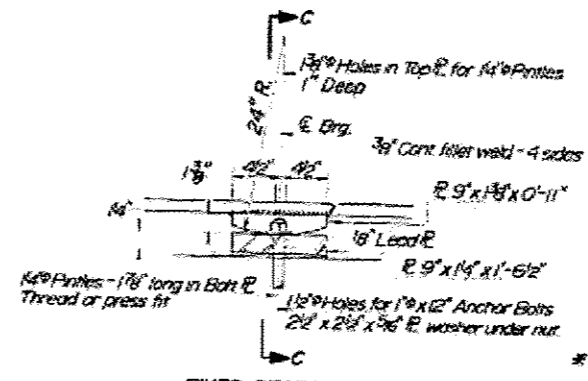
N. ABUT. TFE DETAILS
 Note: The 1/8" TFE sheet shall be bonded directly to the top steel plate with a two component, medium viscosity epoxy resin, conforming to the requirements of the Federal Specification MILM-A-134, Type I. The bond agent shall be applied on the full area of the contact surfaces. Bonding of 1/8" TFE sheet during vulcanizing process will be permitted provided the process and method of adjusting assembly height is approved by the Engineer.
 New anchor bolts of new bearing may be built into masonry.
 See Sheet No. 15 of 16 for anchor bolt installation.



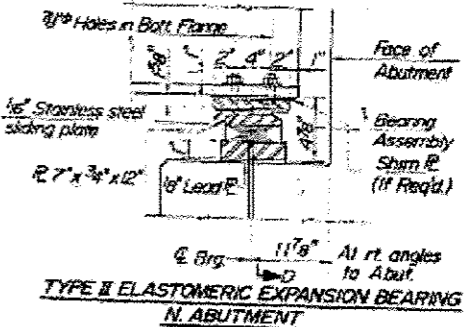
TYPE I ELASTOMERIC EXPANSION BEARING S. ABUTMENT



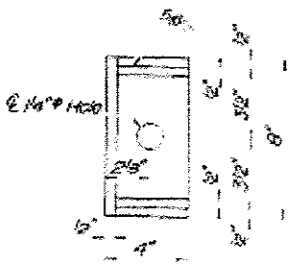
TYPE I ELASTOMERIC EXPANSION BEARING PIER 2



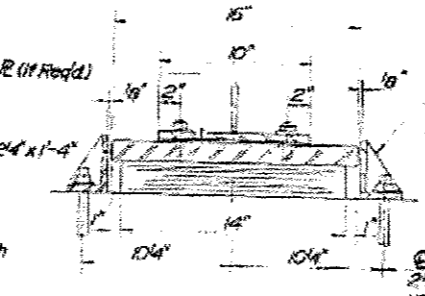
FIXED BEARING PIER 1
 Note: Quantity of Structural Steel for Pier 1 Retainers and bearings included in the lump sum item for Structural Steel - Est. wt. 1280 lbs.



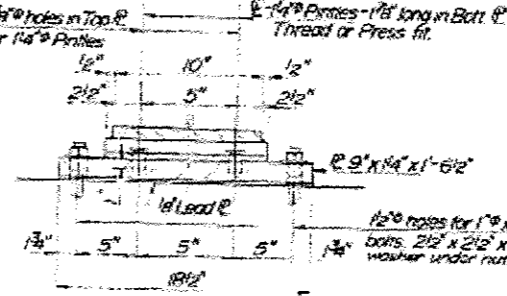
TYPE II ELASTOMERIC EXPANSION BEARING N. ABUTMENT



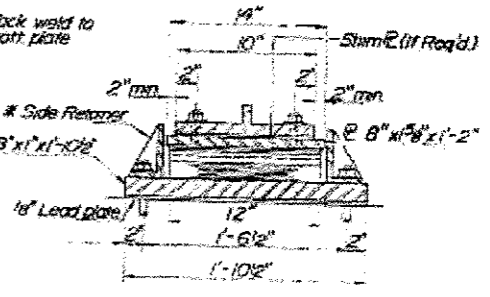
SECTION A-A



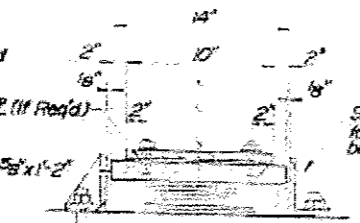
SECTION B-B



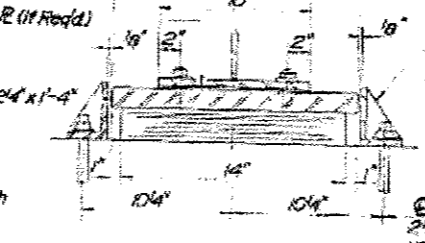
SECTION C-C



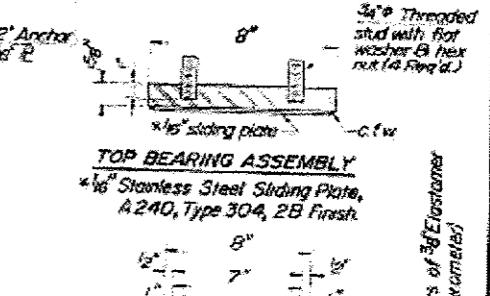
SECTION D-D



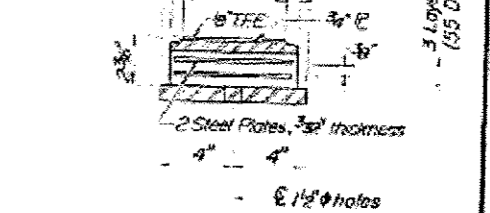
BEARING ASSEMBLY S. ABUT.



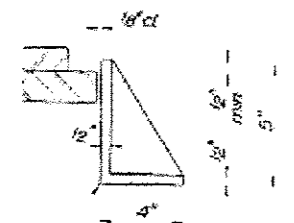
BEARING ASSEMBLY PIER 2



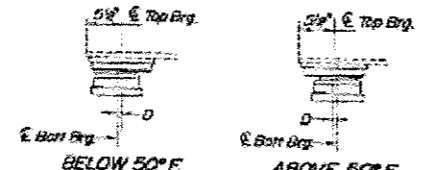
TOP BEARING ASSEMBLY
 1/8" Stainless Steel Sliding Plate, A240, Type 304, 2B Finish



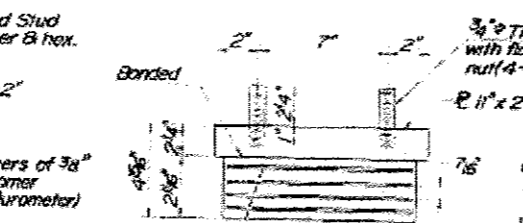
BOTTOM BEARING ASSEMBLY



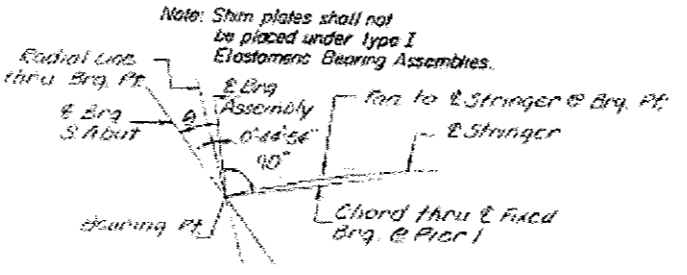
SIDE RETAINER DETAILS
 (An equivalent rolled angle with stiffeners will be allowed in lieu of welded plate.)



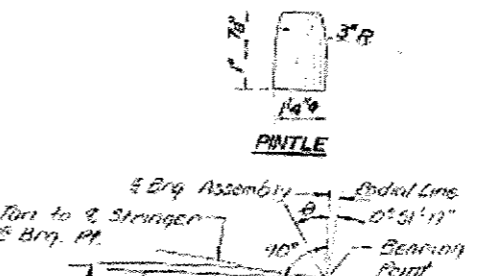
SETTING BOLSTER AT EXP. BRG.
 D = 1/8" per each 100' of expansion for every 15° temp. change from the normal temp. of 50° F.



BEARING LAYOUT S. ABUT.



BEARING LAYOUT PIER 2



BEARING LAYOUT N. ABUT.

Item	Quantity
Elastomeric Bearing Assembly, Type I	Each
Elastomeric Bearing Assembly, Type II	Each

Item	Quantity
Elastomeric Bearing Assembly, Type I	15
Elastomeric Bearing Assembly, Type II	3

ALLEN HENDERSON & ASSOCIATES

CONSULTING CIVIL AND STRUCTURAL ENGINEERS

SPRINGFIELD, ILL.

STATE OF ILLINOIS
 DEPARTMENT OF TRANSPORTATION

EXISTING BRIDGE PLANS
 SN: 071-0025

F.A.P. RTE.	SECTION	COUNTY	TOTAL SHEETS	SHEET NO.
IL 2 D2	BRIDGE PAINTING 2014-	LEE / OGLE	25	25

CONTRACT NO. 64J52
ILLINOIS