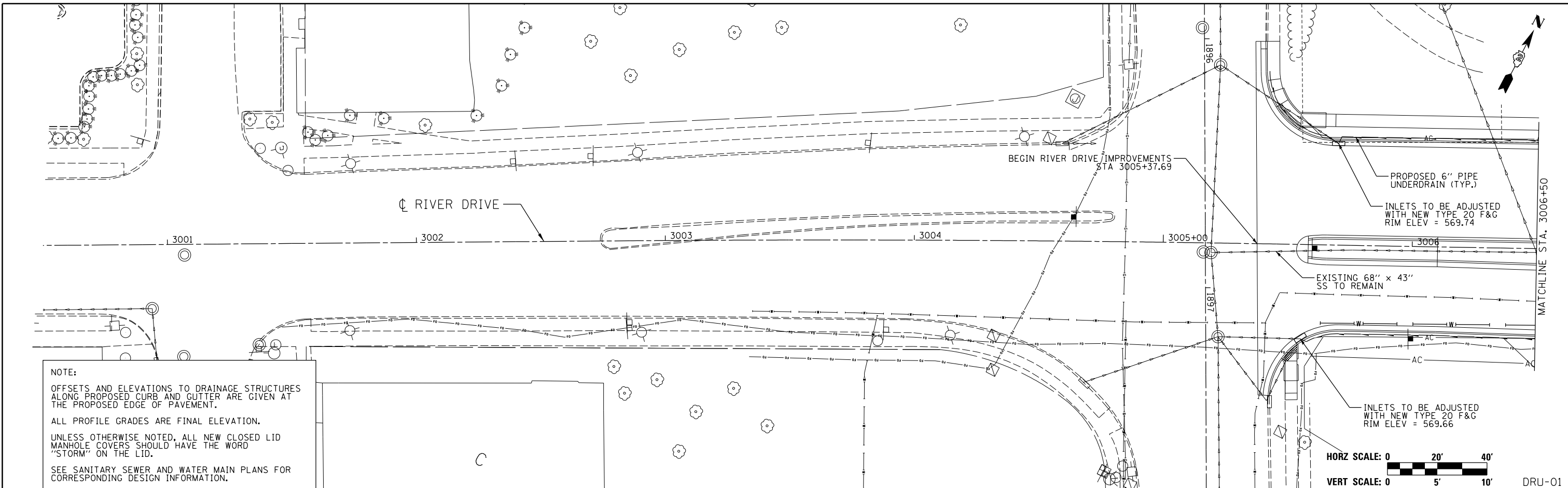


PLAN	SURVEYED	BY	DATE
	PLOTTED		
	CHECKED		
	AT		
	FILE NAME		
	NO.		

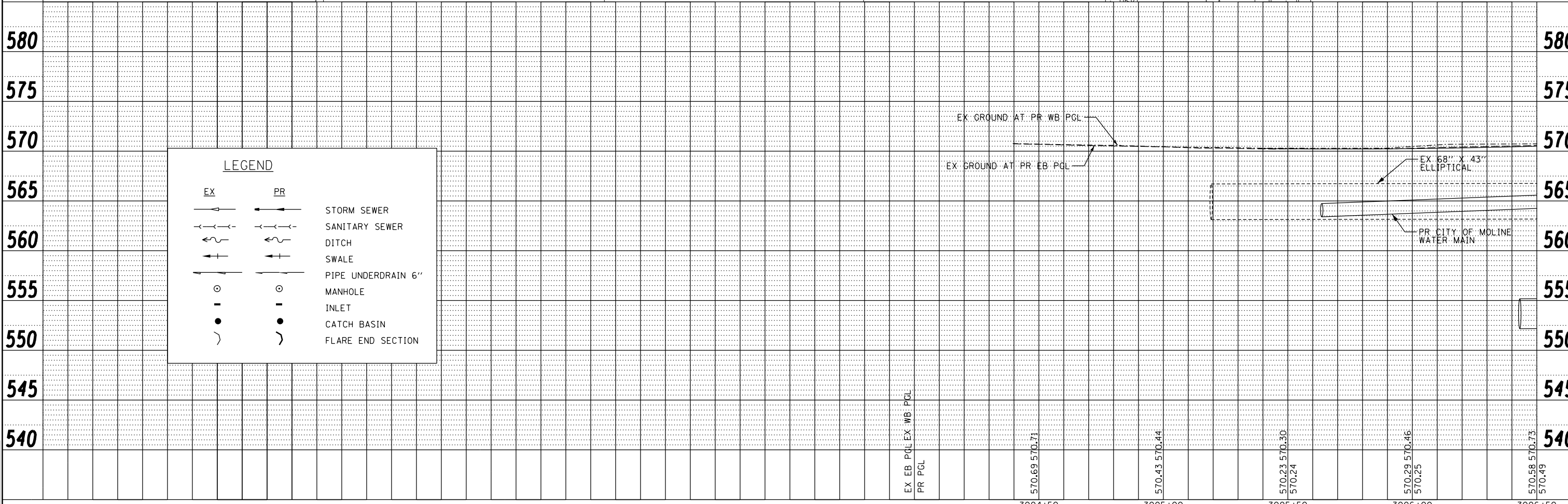


PROFILE	SURVEYED	BY	DATE
	PLOTTED		
	CHECKED		
	GRADES		
	STRUCTURE		
	NOTATIS		
	CHFD		
	NO.		

LAYOUT	KMS	12/12/2013
DRAWN	KMS	12/12/2013
REVIEWED	SPG/JJM	2/28/2014



NOTE:
 OFFSETS AND ELEVATIONS TO DRAINAGE STRUCTURES ALONG PROPOSED CURB AND GUTTER ARE GIVEN AT THE PROPOSED EDGE OF PAVEMENT.
 ALL PROFILE GRADES ARE FINAL ELEVATION.
 UNLESS OTHERWISE NOTED, ALL NEW CLOSED LID MANHOLE COVERS SHOULD HAVE THE WORD "STORM" ON THE LID.
 SEE SANITARY SEWER AND WATER MAIN PLANS FOR CORRESPONDING DESIGN INFORMATION.



LEGEND		
EX	PR	
→	→	STORM SEWER
→	→	SANITARY SEWER
→	→	DITCH
→	→	SWALE
→	→	PIPE UNDERDRAIN 6"
○	○	MANHOLE
●	●	INLET
○	○	CATCH BASIN
))	FLARE END SECTION

FILE NAME = D2PACKE-HPS-sht-drain001L.dgn	USER NAME = petke00954	DESIGNED - KMS	REVISED -	STATE OF ILLINOIS DEPARTMENT OF TRANSPORTATION	DRAINAGE & UTILITIES PLAN AND PROFILE RIVER DRIVE				F.A.U. RTE. 5756	SECTION (81-1)M	COUNTY ROCK ISLAND	TOTAL SHEETS 217	SHEET NO. 64
PLOT SCALE = 1" = 20'	CHECKED - SPG/JJW	REVISOR -	DATE - 3/7/2014		SCALE: 1" = 20'	SHEET NO.	OF SHEETS	STA. 3000+50 TO STA. 3006+50	CONTRACT NO. 64J68		ILLINOIS FED. AID PROJECT		