

**GENERAL NOTES**

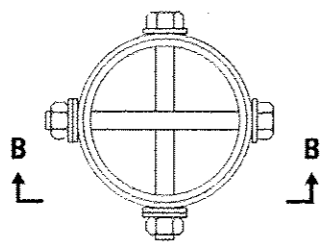
See Sheet 10 of 10 for Light Pole Foundation and grounding electrode.

See Standard 720001 for pole identification banding to pole.

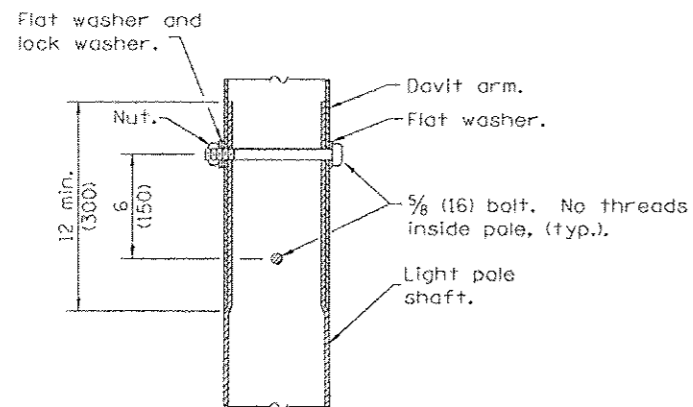
Provide breakaway devices.

All dimensions are in inches (millimeters) unless otherwise shown.

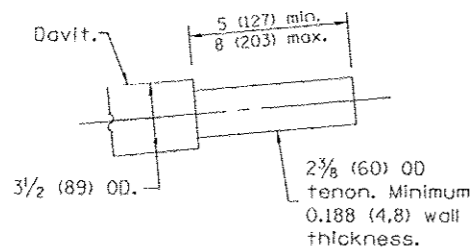
SEE COMMENT ON SPECIAL PROVISIONS



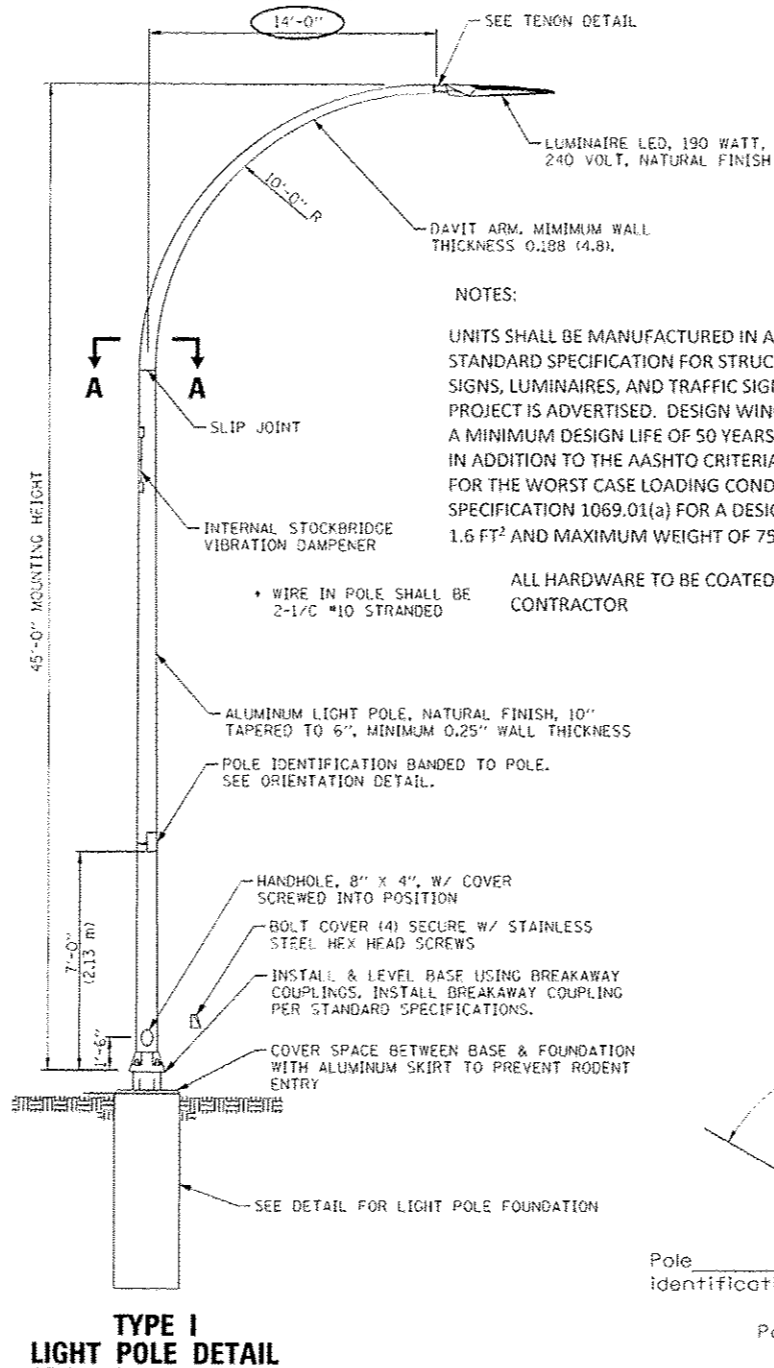
**SECTION A-A**



**SECTION B-B**



**TENON DETAIL**



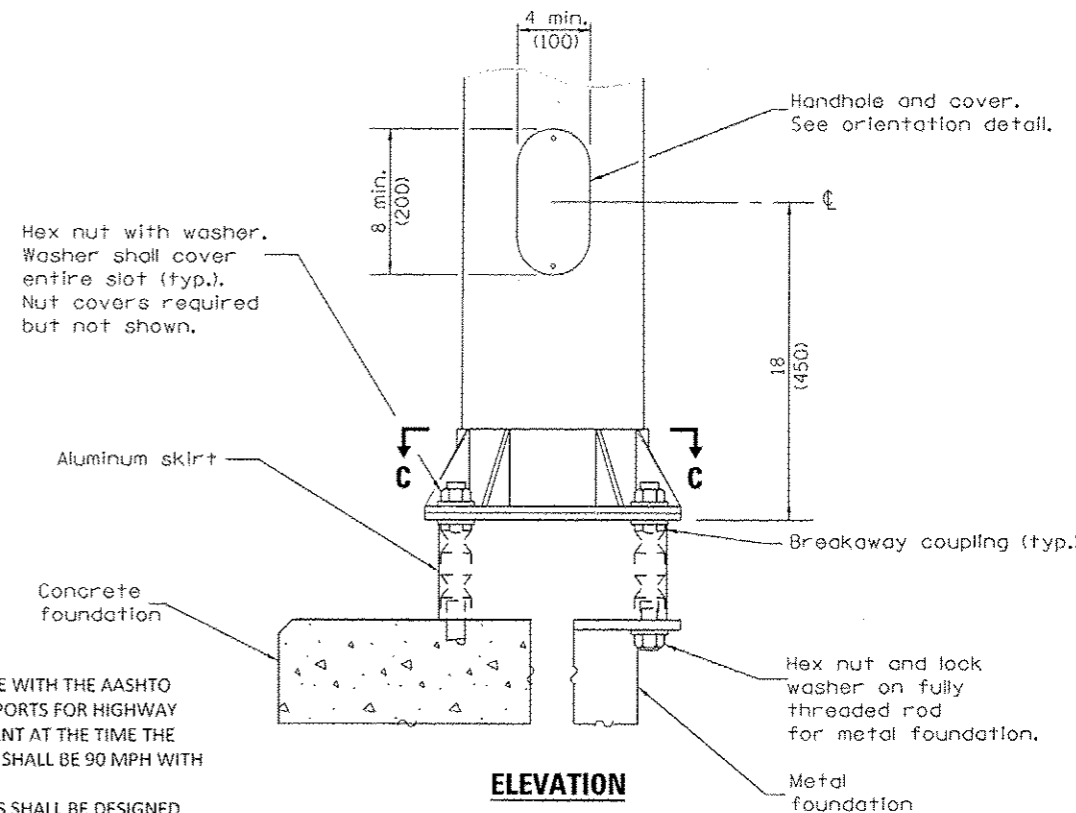
**TYPE I LIGHT POLE DETAIL**

**NOTES:**

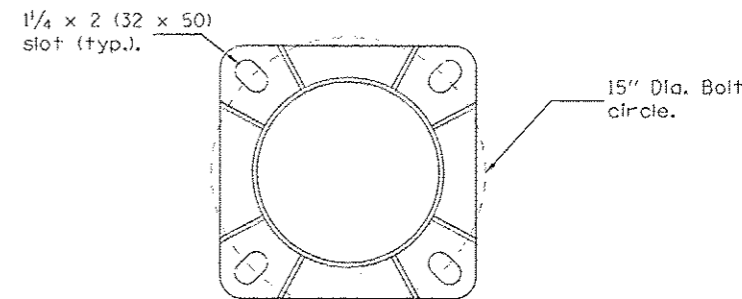
UNITS SHALL BE MANUFACTURED IN ACCORDANCE WITH THE AASHTO STANDARD SPECIFICATION FOR STRUCTURAL SUPPORTS FOR HIGHWAY SIGNS, LUMINAIRES, AND TRAFFIC SIGNALS CURRENT AT THE TIME THE PROJECT IS ADVERTISED. DESIGN WIND VELOCITY SHALL BE 90 MPH WITH A MINIMUM DESIGN LIFE OF 50 YEARS. IN ADDITION TO THE AASHTO CRITERIA, THE POLES SHALL BE DESIGNED FOR THE WORST CASE LOADING CONDITION SET FORTH IN IL D.O.T. SPECIFICATION 1069.01(a) FOR A DESIGN LUMINAIRE HAVING AN EPA OF 1.6 FT<sup>2</sup> AND MAXIMUM WEIGHT OF 75 LBS

ALL HARDWARE TO BE COATED WITH ANTI-SEIZE COMPOUND BY CONTRACTOR

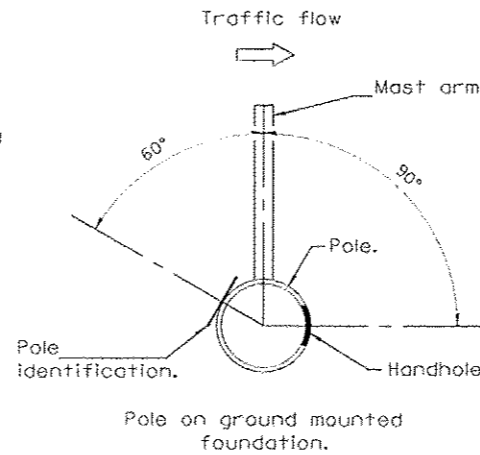
WIRE IN POLE SHALL BE 2-1/2 #10 STRANDED



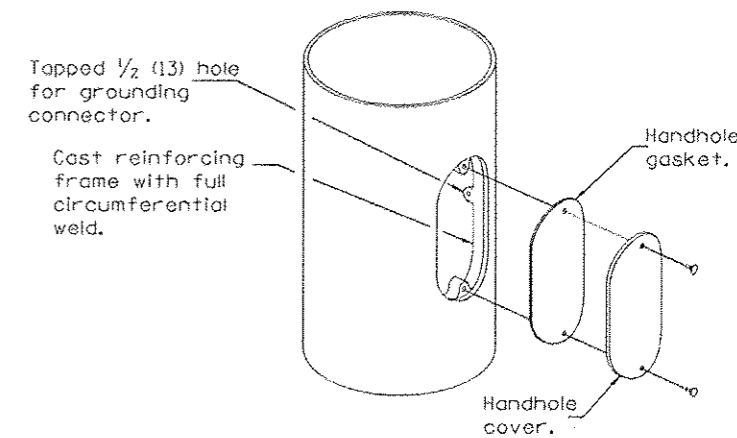
**ELEVATION**



**SECTION C-C  
(Bolts not shown)  
POLE BASE DETAIL**



**HANDHOLE / IDENTIFICATION ORIENTATION DETAIL**



**HANDHOLE DETAIL**

**benesch**  
engineers · scientists · planners  
Alfred Benesch & Company  
205 North Michigan Avenue, Suite 2500  
Chicago, Illinois 60601  
312-565-0150 Job No. 10084

FILE NAME 02C0104-09-light1E21.dgn	USER NAME NLH	DESIGNED - BENESCH	REVISED -
PLLOT SCALE - NO SCALE	CHECKED - GHT	DRAWN - NLH	REVISED -
PLLOT DATE - 3/25/2014	DATE - 3/17/2014		

**STATE OF ILLINOIS  
DEPARTMENT OF TRANSPORTATION**

**LIGHTING DETAILS - LIGHT POLES**

SCALE: NO SCALE SHEET NO. 9 OF 10 SHEETS STA. TO STA.

F.A.U. RTE. 5756	SECTION (81)-1M	COUNTY ROCK ISLAND	TOTAL SHEETS 217	SHEET NO. 117
CONTRACT NO. 64J68			ILLINOIS FED. AID PROJECT	