

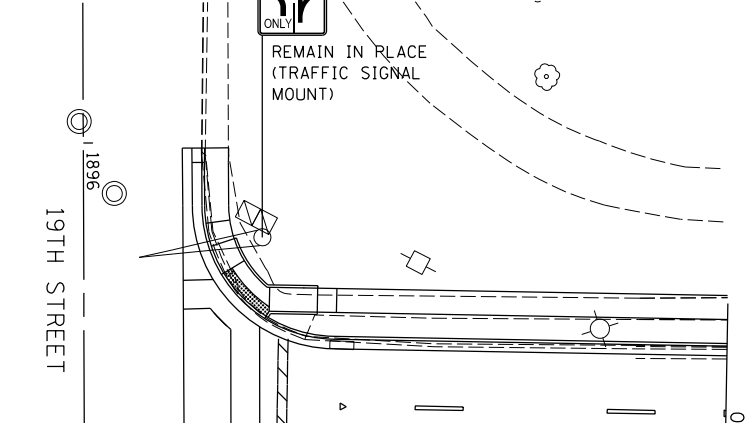
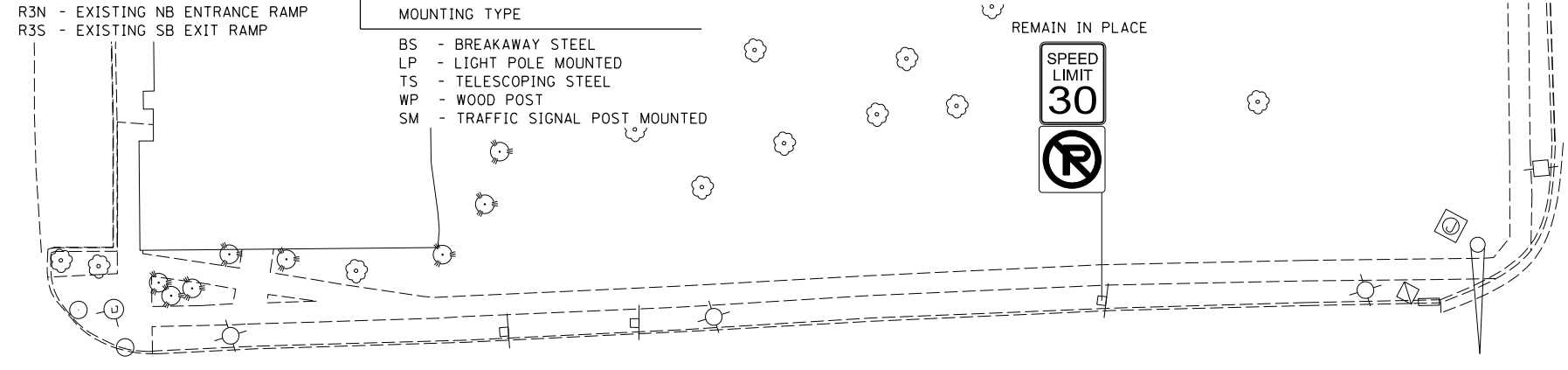
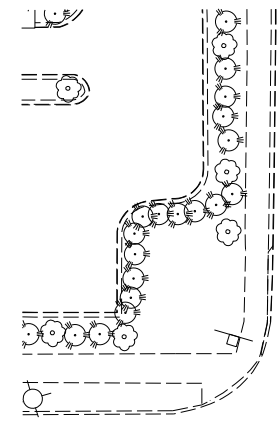
SIGN SEQUENCE
NUMBERING CODE

EXAMPLE

DIRECTION OF TRAFFIC	SIGN SEQUENCE NUMBERING CODE	ACTION	SIGN PANEL NUMBER	MOUNTING TYPE
NB - NORTHBOUND	NB-3-SP-002-R	P - PROPOSED		BS - BREAKAWAY STEEL
EB - EASTBOUND		R - REMOVE		LP - LIGHT POLE MOUNTED
SB - SOUTHBOUND		RL - RELOCATE		TS - TELESCOPING STEEL
WB - WESTBOUND		RP - REMAIN IN PLACE		WP - WOOD POST
				SM - TRAFFIC SIGNAL POST MOUNTED

ROADWAY

3	- RIVER DRIVE
20	- 20TH STREET
R3N	- EXISTING NB ENTRANCE RAMP
R3S	- EXISTING SB EXIT RAMP



PR RIVER DR

3001

3002

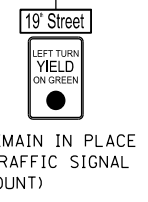
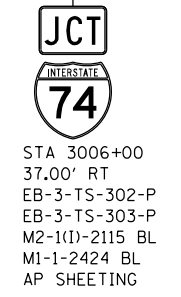
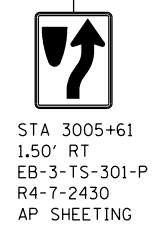
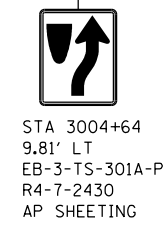
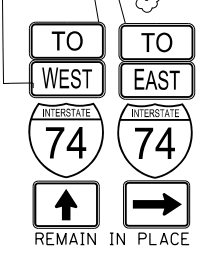
3003

3004

3005+00

3006

MATCHLINE STA. 3006+50



NOTE:

- OFFSETS TO CENTER OF SIGN.



© Hanson Professional Services, Inc.
HANSON
 HANSON PROFESSIONAL SERVICES, INC.

LAYOUT	DRAWN	REVIEWED	DATE
MPV	MPV	MTH	3/14/2014

FILE NAME = D2PACKE-HP5-sht-sign016.dgn

USER NAME = petke00954
 PLOT SCALE = 1" = 20'
 PLOT DATE = 03/24/2014

DESIGNED - MPV
 DRAWN - MPV
 CHECKED - MTH
 DATE - 3/7/2014

REVISED -
 REVISED -
 REVISED -
 REVISED -

STATE OF ILLINOIS
DEPARTMENT OF TRANSPORTATION

SIGNING PLAN
RIVER DRIVE
STA. 3000 + 50 TO STA. 3006 + 50

SCALE: 1" = 20' SHEET NO. OF SHEETS STA. 3000+50 TO STA. 3006+50

F.A.U. RTE.	SECTION	COUNTY	TOTAL SHEETS	SHEET NO.
5756	(81-1)M	ROCK ISLAND	217	121

CONTRACT NO. 64J68

SGN-03

ILLINOIS FED. AID PROJECT