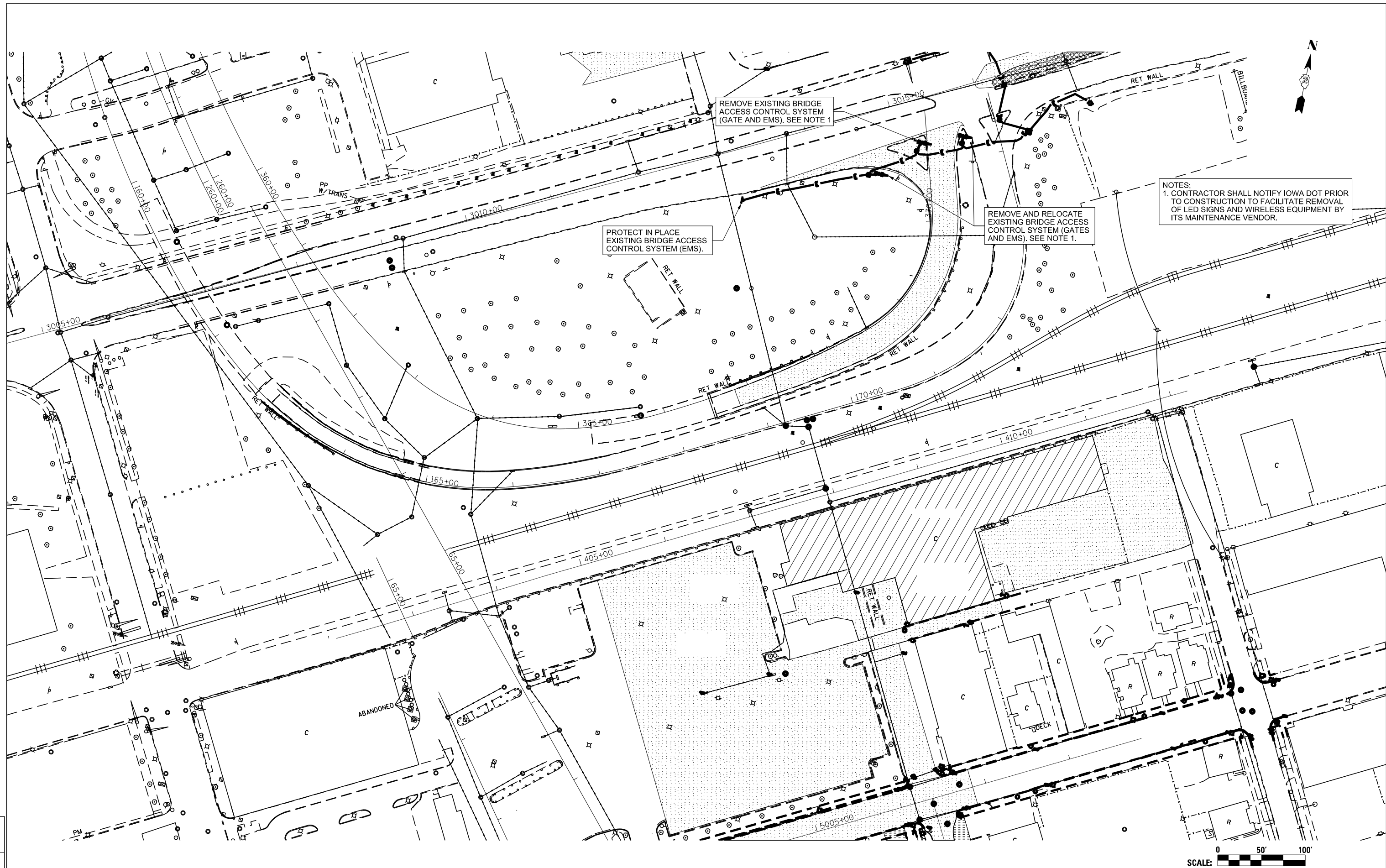


ITERIS

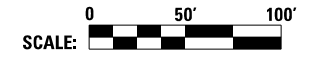


NOTES:  
1. CONTRACTOR SHALL NOTIFY IOWA DOT PRIOR TO CONSTRUCTION TO FACILITATE REMOVAL OF LED SIGNS AND WIRELESS EQUIPMENT BY ITS MAINTENANCE VENDOR.

PROTECT IN PLACE EXISTING BRIDGE ACCESS CONTROL SYSTEM (EMS).

REMOVE EXISTING BRIDGE ACCESS CONTROL SYSTEM (GATE AND EMS). SEE NOTE 1

REMOVE AND RELOCATE EXISTING BRIDGE ACCESS CONTROL SYSTEM (GATES AND EMS). SEE NOTE 1.



LAYOUT	
DRAWN	
REVIEWED	

FILE NAME =	USER NAME = dmccintock	DESIGNED - DJM	REVISED -
ci:\pwise_work\do_not_delete\dms01359\02\PACKE-IT-sht-ITS500.sht		DRAWN - DJM	REVISED -
	PLOT SCALE = NA	CHECKED - SPG	REVISED -
	PLOT DATE = 4/14/2014	DATE - 3/6/2013	REVISED -

STATE OF ILLINOIS  
DEPARTMENT OF TRANSPORTATION

ITS REMOVALS

SCALE: NA SHEET NO. 3 110F SHEET SSTA. TO STA.

F.A.U. R.T.E.	SECTION	COUNTY	TOTAL SHEETS	SHEET NO.
5756	(81-11M)	ROCK ISLAND	217	129
			CONTRACT NO. 64J68	
ILLINOIS FED. AID PROJECT				

ITS-03