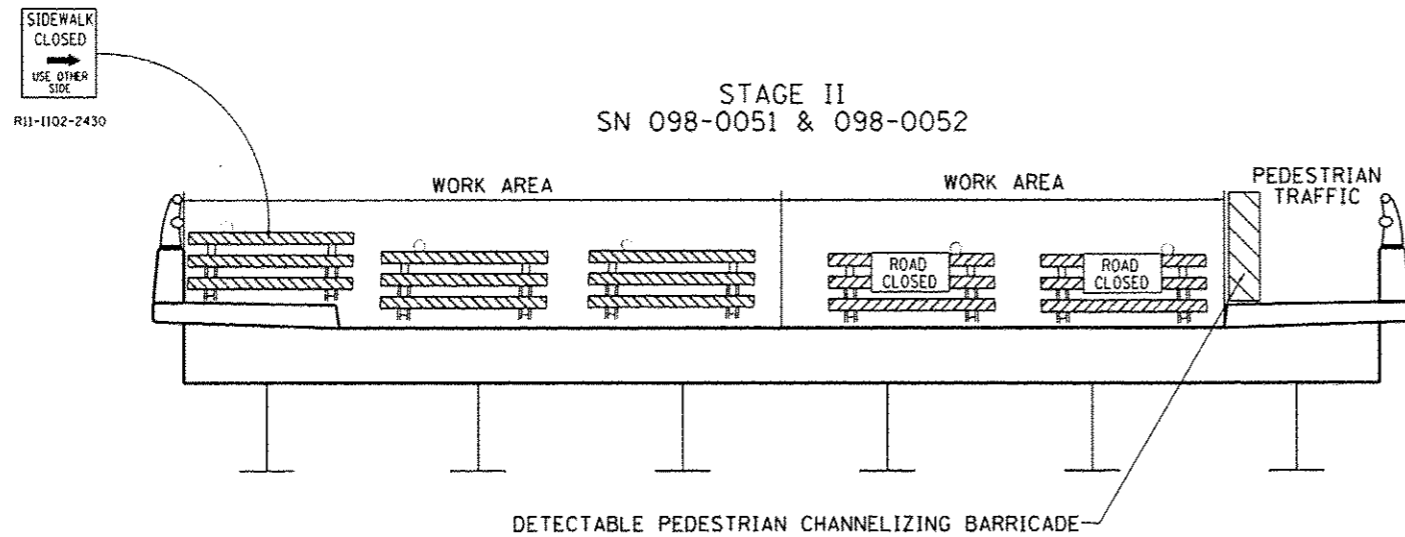
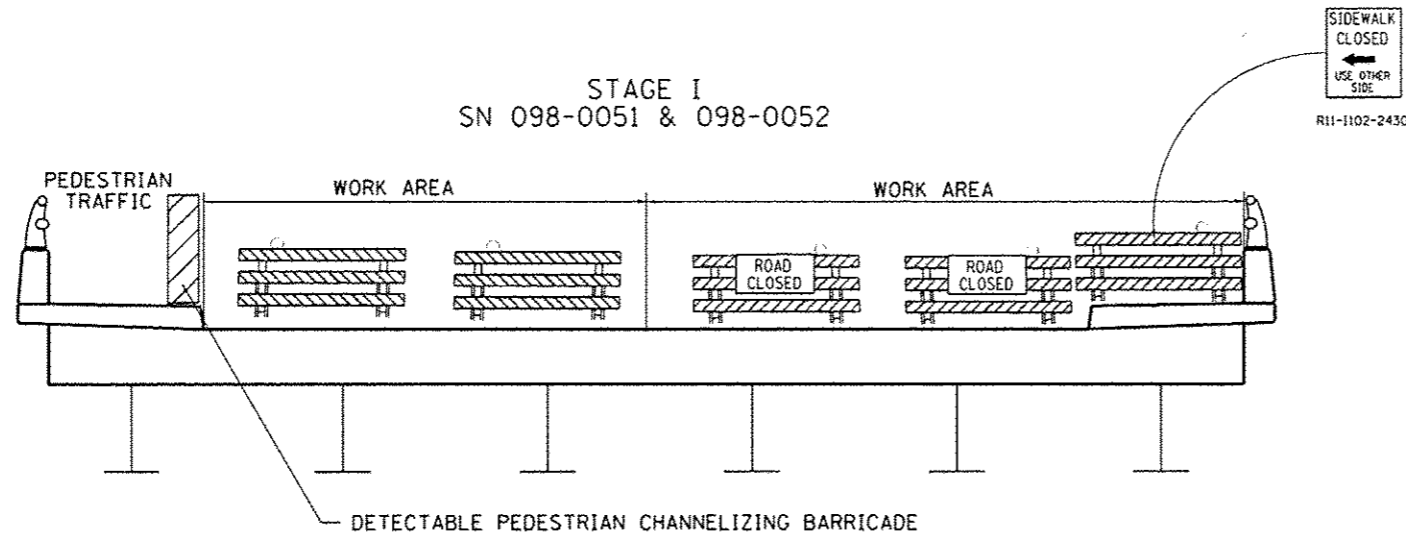


MAINTENANCE OF PEDESTRIAN TRAFFIC DETAILS



GENERAL NOTES FOR TRAFFIC CONTROL

THE CONTRACTOR SHALL NOT MOUNT CONSTRUCTION TRAFFIC CONTROL SIGNS ON EXISTING SIGNS OR SUPPORTS.

NARRATIVE FOR PEDESTRIAN TRAFFIC CONTROL STAGES

TWO WEEKS PRIOR TO CONSTRUCTION, CONTRACTOR SHALL PLACE CHANGEABLE MESSAGE BOARDS BEYOND THE NORTHERN AND SOUTHERN LIMITS OF THE PROJECT. MESSAGE DISPLAYED ON MESSAGE BOARDS SHALL BE APPROVED BY THE ENGINEER.

FULL BRIDGE CLOSURE
35 WORKING DAYS OF FULL BRIDGE CLOSURE FOR SUBSTRUCTURE REPAIR, EXPANSION JOINT REPLACEMENT AND FINGER JOINT REPLACEMENT AS SHOWN ON PLANS.

STAGE I
MAINTAIN EXISTING PEDESTRIAN TRAFFIC ON AVENUE "G" USING EXISTING WEST SIDEWALK.

STAGE II
MAINTAIN EXISTING PEDESTRIAN TRAFFIC ON AVENUE "G" USING EXISTING EAST SIDEWALK.

NOTES:
PEDESTRIAN ACCESS SHALL BE MAINTAINED AT ALL TIMES.

CONTRACTOR SHALL PROVIDE SIGNAGE AND DETECTABLE PEDESTRIAN CHANNELIZING BARRICADES TO FACILITATE AND PROTECT PEDESTRIANS WHEN BRIDGE IS CLOSED TO VEHICULAR TRAFFIC.

THE CONTRACTOR SHALL PROTECT PEDESTRIANS FROM HAZARDS CAUSED BY CONSTRUCTION ACTIVITIES AT ALL TIMES. THIS INCLUDES, BUT IS NOT LIMITED TO, FLYING DEBRIS FROM WORK.

FILE NAME =	USER NAME = dssdd	DESIGNED -	REVISED -	STATE OF ILLINOIS DEPARTMENT OF TRANSPORTATION	MAINTENANCE OF PEDESTRIAN TRAFFIC DETAILS SN 098-0051 & 098-0052		F.A.U. RTE.	SECTION	COUNTY	TOTAL SHEETS	SHEET NO.
D:\BRNDoss\Whiteside\64J92 Repair.s	098-0051 & SN 098-0052\CADD\0207713-akt.cov	DRAWN -	REVISED -		5571	D2 BRIDGE REPAIR 2014-2	WHITESIDE	33	4		
Default	PLOT SCALE = 100.0000' / 1" =	CHECKED -	REVISED -		CONTRACT NO. 64J92			ILLINOIS FED. AID PROJECT			
	PLOT DATE = Fri Mar 20 11:07:25 2014	DATE -	REVISED -		SCALE: _____ SHEET _____ OF _____ SHEETS		STA. _____ TO STA. _____				