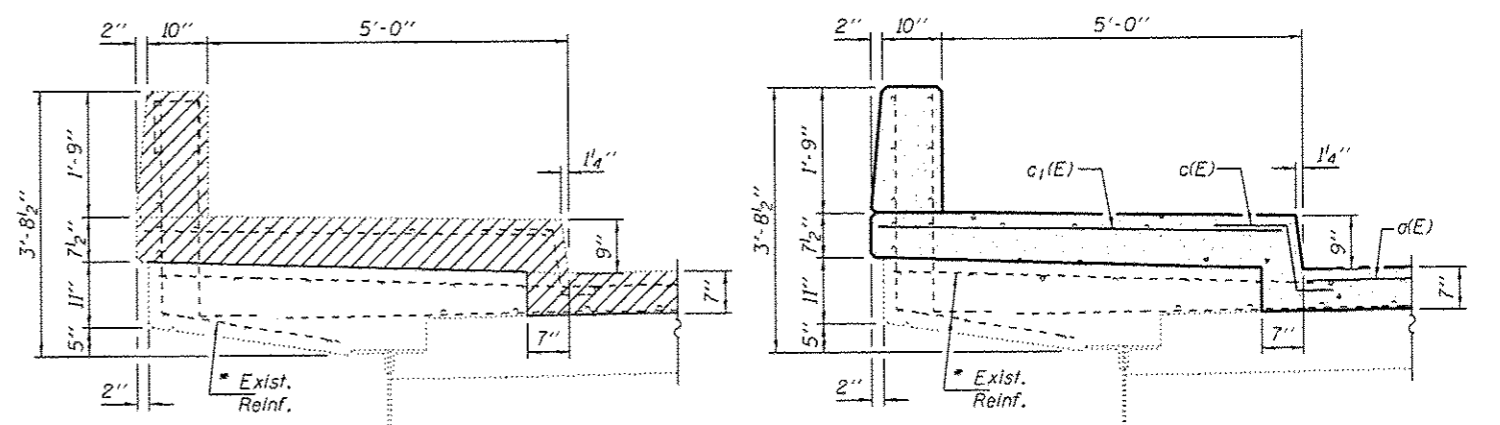
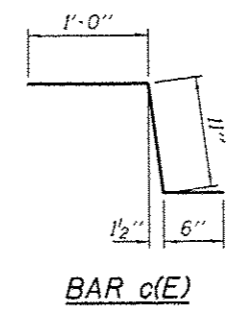


* Existing reinforcement bars extending into the removal area shall be cleaned, straightened and incorporated into the new construction. Any reinforcement bars that are damaged during concrete removal shall be replaced with an approved bar splicer or anchorage system. Cost included with Concrete Removal.



Note:
Hatched areas indicate Concrete Removal.



** Quantities include both abutments.

**** BILL OF MATERIAL**

Bar	No.	Size	Length	Shape
a(E)	16	#5	14'-8"	—
c(E)	16	#5	2'-5"	~
c ₁ (E)	16	#5	5'-7"	—
Concrete Removal			Cu. Yd.	1.8
Concrete Superstructure			Cu. Yd.	1.9
Bar Splicers			Each	8
Reinforcement Bars, Epoxy Coated			Pound	380

DESIGNED - SMR	EXAMINED - <i>Timothy A. [Signature]</i>	DATE - APRIL 23, 2014
CHECKED - TLC	ACTING ENGINEER OF STRUCTURAL SERVICES	
DRAWN - Kyle M. Steffan	PASSED - <i>Carl [Signature]</i>	
CHECKED - SMR, TLC	ACTING ENGINEER OF BRIDGES AND STRUCTURES	

STATE OF ILLINOIS
DEPARTMENT OF TRANSPORTATION

JOINT REMOVAL & REPLACEMENT DETAILS AT ABUTMENTS
SN 098-0051

F.A.U. RTE.	SECTION	COUNTY	TOTAL SHEETS	SHEET NO.
5571	D2 BRIDGE REPAIR 2014-2	WHITESIDE	33	12
CONTRACT NO. 64J92			ILLINOIS FED. AID PROJECT	