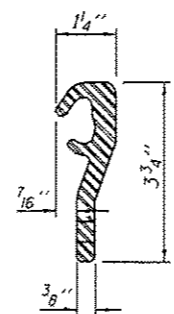


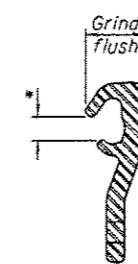
7/16" ϕ holes at 4'-0" cts. for 3/8" ϕ bolts. All bolts shall be burned, sawed, or chipped off flush with the plates after forms are removed, typ.

Place 1/2" ϕ x 6" granular or solid flux filled headed studs conforming to Article 1006.32 of the Std. Specs., automatically end welded at 1'-0" alt. cts.

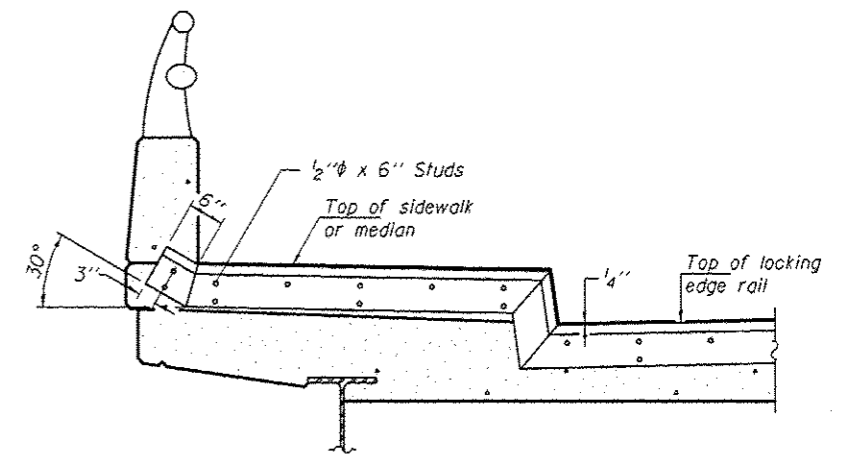
SECTION THRU SHALLOW STRIP SEAL JOINT



ROLLED (EXTRUDED) RAIL



LOCKING EDGE RAIL SPLICE



TYPICAL END TREATMENT AT SIDEWALK OR MEDIAN

Shorter plates with a single row of studs at 12" cts. may be necessary on medians which are shallower than 9". See manufacturer's recommendation.

- * Omit weld at seal opening.
- ** The minimum dimension shall be 1 1/2" for installation purposes.

Notes:

The strip seal shall be made continuous and shall have a minimum thickness of 1/4". The configuration of the strip seal shall match the configuration of the Locking Edge Rails.

The height and thickness of the Locking Edge Rails shown are minimum dimensions. The actual configuration of the Locking Edge Rails and matching strip seal may vary from manufacturer to manufacturer. Flanged edge rails will not be allowed.

The inside of the Locking Edge Rail groove shall be free of weld residue. Locking Edge Rails may be spliced at slope discontinuities and stage construction joints.

The manufacturer's recommended installation methods shall be followed. All steel components shall be galvanized after fabrication according to Article 520.03 of the Standard Specifications.

Maximum space between rail segments at stage lines shall be 3/16", sealed with a suitable sealant. Joints in rails within 10 ft. of curbs shall be welded.

BILL OF MATERIAL

Item	Unit	Total
Preformed Joint Strip Seal	Foot	85

DESIGNED - SMR
 CHECKED - TLC
 DRAWN - Kyle M. Steffan
 CHECKED - SMR TLC

EXAMINED
 PASSED
 ACTING ENGINEER OF BRIDGES AND STRUCTURES

DATE - APRIL 23, 2014

STATE OF ILLINOIS
 DEPARTMENT OF TRANSPORTATION

PREFORMED JOINT STRIP SEAL AT ABUTMENTS
 SN 098-0051
 SHEET NO. 3 OF 7 SHEETS

F.A.U. RTE.	SECTION	COUNTY	TOTAL SHEETS	SHEET NO.
5571	02 BRIDGE REPAIR 2014-2	WHITESIDE	33	13

CONTRACT NO. 64J92
 ILLINOIS FED. AID PROJECT