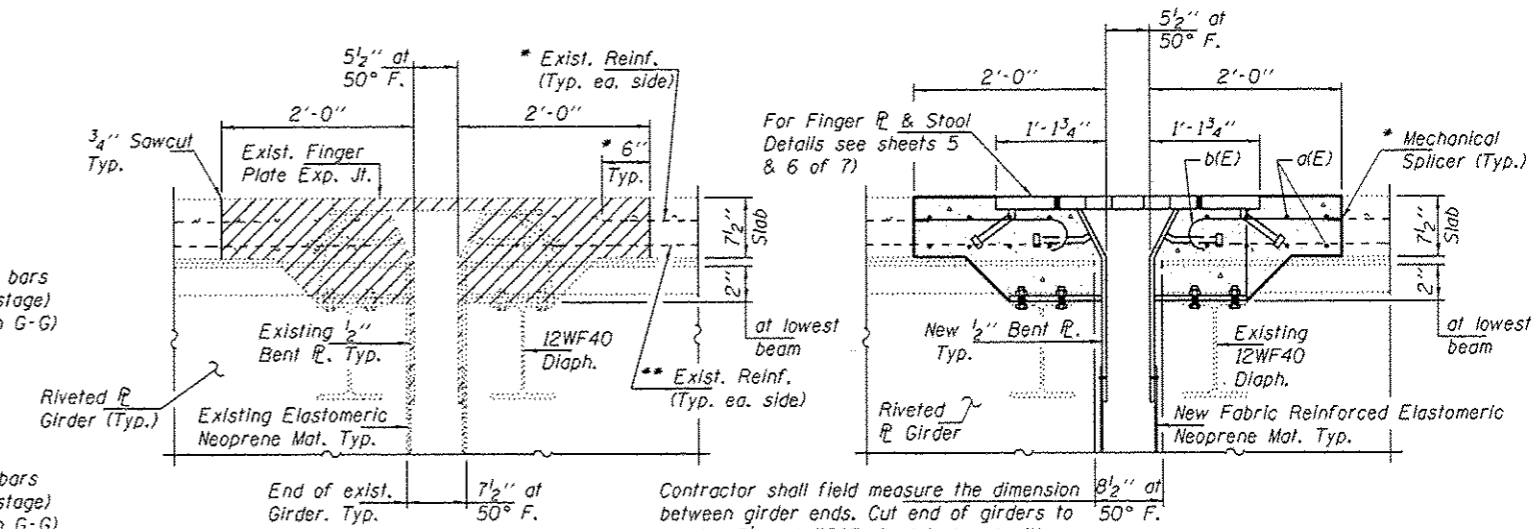


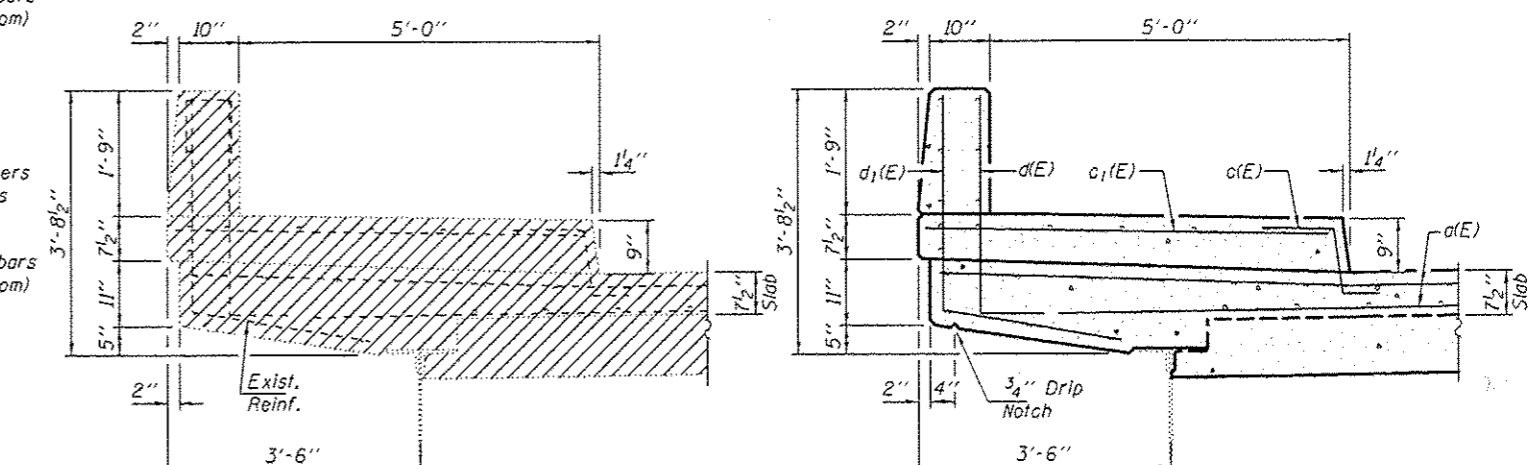
**REMOVAL PLAN**

**REPLACEMENT PLAN**



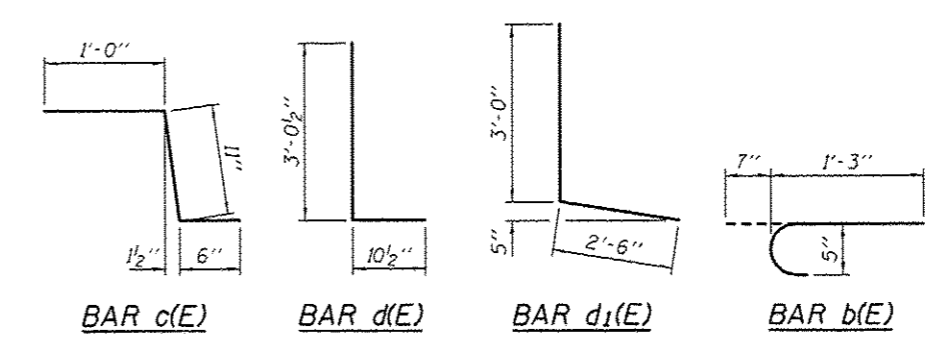
**SECTION E-E**

**SECTION F-F**



**SECTION H-H**

**SECTION G-G**



**BAR c(E) BAR d(E) BAR d1(E) BAR b(E)**

**BILL OF MATERIAL**

| Bar                              | No. | Size | Length  | Shape |
|----------------------------------|-----|------|---------|-------|
| d(E)                             | 32  | #5   | 20'-8"  | —     |
| b(E)                             | 60  | #5   | 1'-10"  | C     |
| c(E)                             | 12  | #5   | 2'-5"   | L     |
| c1(E)                            | 12  | #5   | 5'-7"   | —     |
| d1(E)                            | 12  | #5   | 3'-11"  | —     |
| d1(E)                            | 12  | #5   | 5'-6"   | L     |
| Concrete Removal                 |     |      | Cu. Yd. | 7.4   |
| Concrete Superstructure          |     |      | Cu. Yd. | 7.4   |
| Bar Splicers                     |     |      | Each    | 16    |
| Mechanical Splicers              |     |      | Each    | 60    |
| Reinforcement Bars, Epoxy Coated |     |      | Pound   | 1020  |

\* Cut existing longitudinal bars to be mechanically spliced to new bars. Cost included with Concrete Removal.

\*\* Existing reinforcement bars extending into the removal area shall be cleaned, straightened and incorporated into the new construction. Any reinforcement bars that are damaged during concrete removal shall be replaced with an approved bar splicer or anchorage system. Cost included with Concrete Removal.