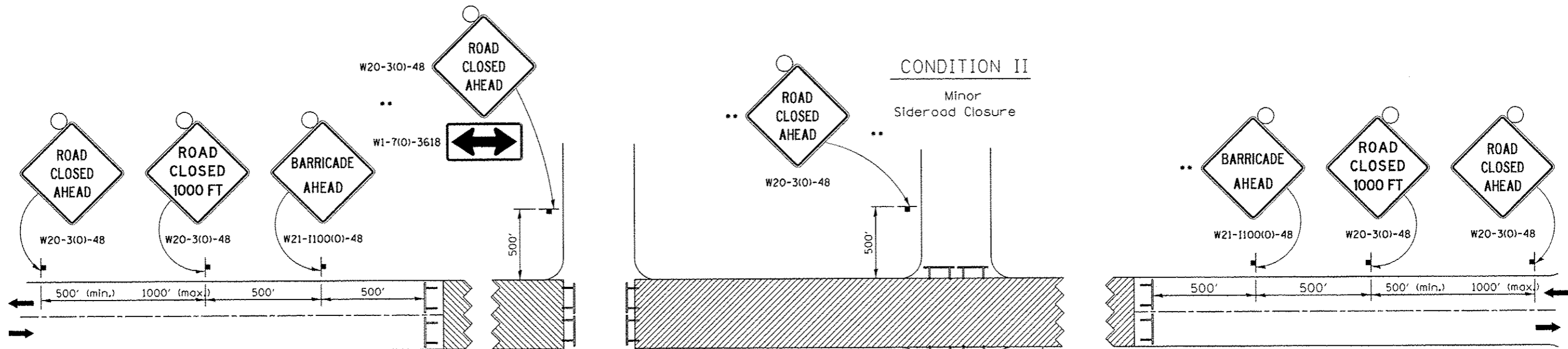
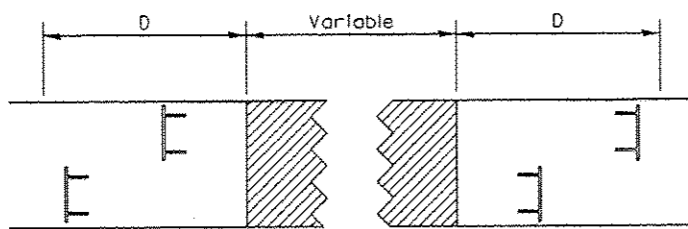


# TRAFFIC CONTROL FOR ROAD CLOSURE






ROAD CLOSED TO THRU TRAFFIC BARRICADE SET UP



Type III Barricades and R11-4-4830 signs shall be as shown in "Road Closed To Thru Traffic" detail on Highway Standard 701901. If the distance "D" exceeds 2000' an additional set of barricades and R11-4-4830 shall be placed at each end of the work area.

## SYMBOLS

-  Work area
-  Type III Barricade with Flashers
-  Sign with flashing light

## GENERAL NOTES

- Longitudinal dimensions may be adjusted to fit field conditions.
- When speed limit is less than 45mph, change sign spacing to 250' and change ROAD CLOSED 1000 FT to ROAD CLOSED 500 FT.
- Side roads requiring all three signs as shown in CONDITION I (Major Sideroad Closure), shall be listed in the special provision.
- \*\* Where local access is to be maintained, barricades are to be set up as shown in Road Closed to thru traffic. Type III Barricades and R11-2-4830 signs shall be as shown in "Road Closed To All Traffic" detail on Highway Standard 701901.
- All dimensions are in inches unless otherwise shown.

TYPICAL APPLICATION FOR ROAD CLOSURE

FILE NAME :	USER NAME : dssdd	DESIGNED -	REVISED - 8-27-13	<b>STATE OF ILLINOIS DEPARTMENT OF TRANSPORTATION</b>	<b>REGION 2 / DISTRICT 2 STANDARD</b>		F.A.U. RTE.:	SECTION	COUNTY	TOTAL SHEETS	SHEET NO.
D:\BR\Doss\Whiteside\64J92 Repairs SN 09-0051 & SN 098-0052\CAD\0207713-shr-cove	DRAWN -	REVISED - 10-17-11	5571				02 BRIDGE REPAIR 2014-2	WHITESIDE	33	33	
PLOT SCALE : 1/8"=1'-0"	CHECKED -	REVISED -	CONTRACT NO. 64J92								
PLOT DATE : Feb Mar 28 11:09:01 2014	DATE -	REVISED -	FED. ROAD DIST. NO. ILLINOIS FED. AID PROJECT								