

F.A.I. RTE.	SECTION	COUNTY	TOTAL SHEETS	SHEET NO.
39	D2 BRIDGE PAINTING 2014-4	LEE	32	1
		ILLINOIS	CONTRACT NO. 64K11	

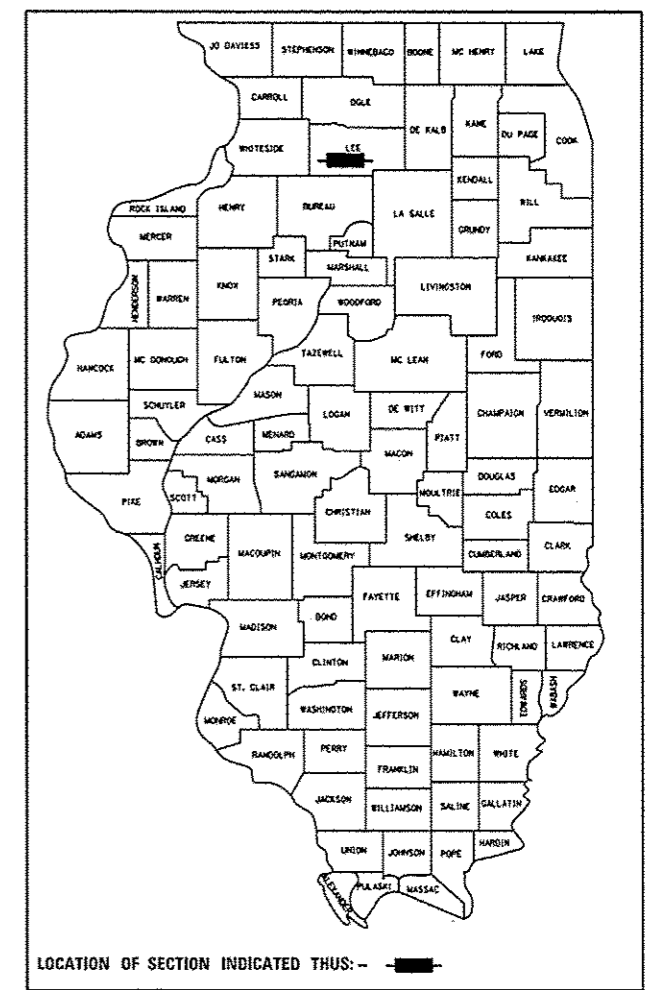
STATE OF ILLINOIS  
DEPARTMENT OF TRANSPORTATION  
DIVISION OF HIGHWAYS

**PROPOSED  
HIGHWAY PLANS**

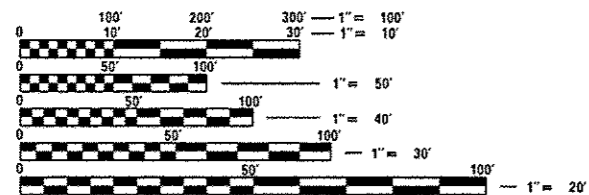
FAI ROUTE 39 (I-39)  
SECTION: D2 BRIDGE PAINTING 2014-4  
TYPE of IMPROVEMENT: BRIDGE PAINTING  
LEE COUNTY

FOR INDEX OF SHEETS, SEE SHEET NO. 2  
FOR STATE STANDARDS, SEE SHEET NO. 2

D-92-031-14



ALTO TOWNSHIP, SECTION 21



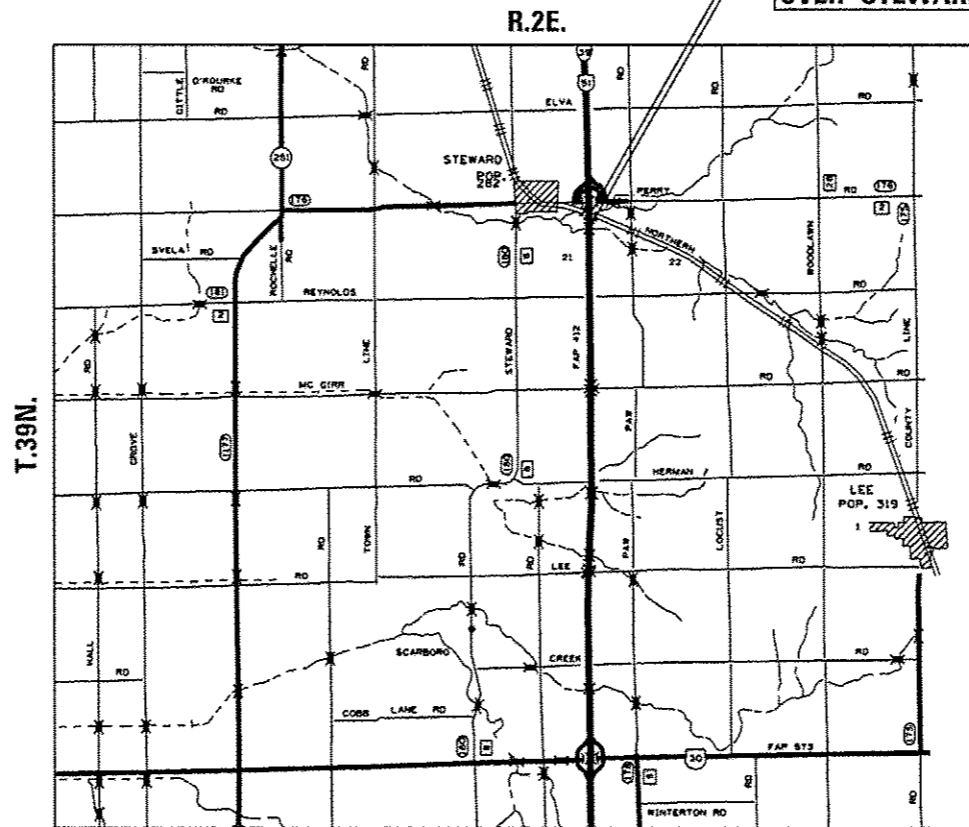
FULL SIZE PLANS HAVE BEEN PREPARED USING STANDARD ENGINEERING SCALES. REDUCED SIZED PLANS WILL NOT CONFORM TO STANDARD SCALES. IN MAKING MEASUREMENTS ON REDUCED PLANS, THE ABOVE SCALES MAY BE USED.

J.U.L.I.E.  
JOINT UTILITY LOCATION INFORMATION FOR EXCAVATION  
1-800-892-0123  
OR 811

C-92-050-14

LOCATION NO. 1 #2  
SN 052-0046 & 052-0047  
OVER THE BN RAILROAD

LOCATION NO. 3 #4  
SN 052-0048 & 052-0049  
OVER STEWARD CREEK



STATE OF ILLINOIS  
DEPARTMENT OF TRANSPORTATION  
DIVISION OF HIGHWAYS

SUBMITTED March 14<sup>th</sup> 2014  
*Paul C. [Signature]*  
DEPUTY DIRECTOR OF HIGHWAYS, REGION ENGINEER

May 9 2014  
*John D. Baranzelli, PE*  
actg. ENGINEER OF DESIGN AND ENVIRONMENT

May 9 2014  
*Osman [Signature]*  
DIRECTOR OF HIGHWAYS, CHIEF ENGINEER

PROJECT ENGINEER: DAVID DOSS (815) 284-5416  
PROJECT MANAGER: MAHMOUD ETEMADI (815) 284-5393

CONTRACT NO. 64K11

PRINTED BY THE AUTHORITY  
OF THE STATE OF ILLINOIS

Rev.