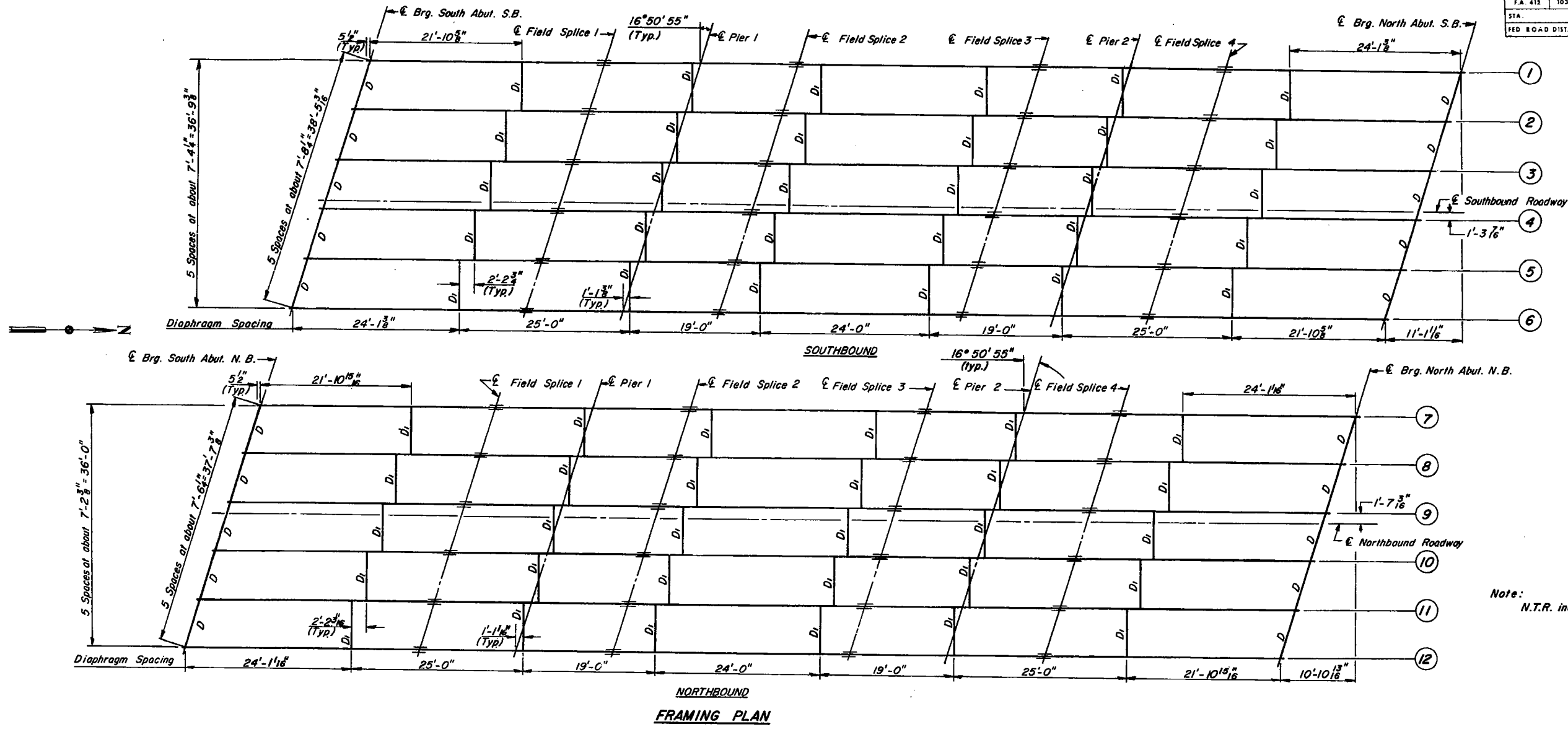
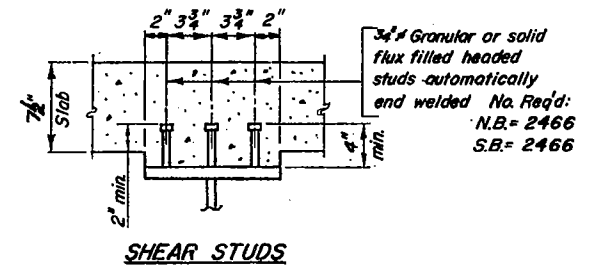
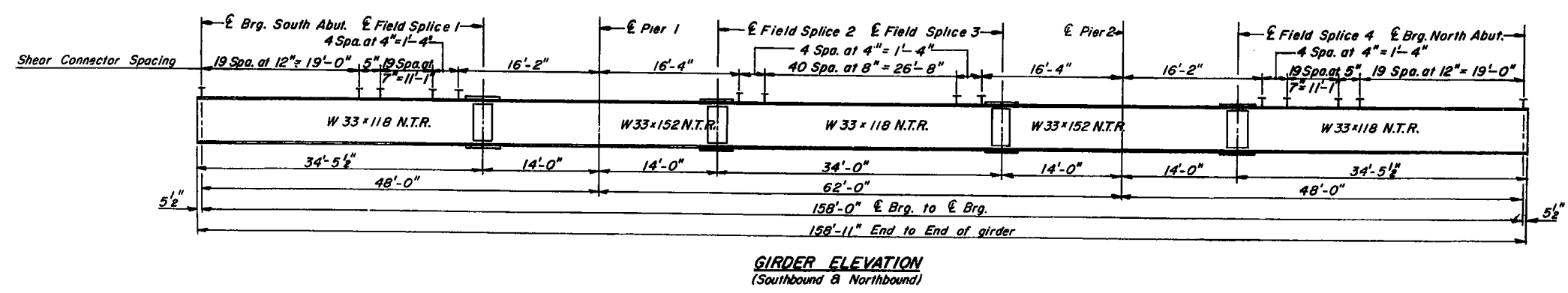


ROUTE NO.	SECTION	COUNTY	TOTAL SHEETS	SHEET NO.	SHEET NO. OF 10 SHEETS
F.A. 412	103-2VB	LEE	203	67	
STA.	TO STA.				
FED. ROAD DIST. NO. 7	ILLINOIS	PROJECT			



Note:
N.T.R. indicates Notch Toughness Requirement.



FRAMING PLAN AND
GIRDER ELEVATION
F.A. 412 SECTION 103-2VB
F.A. 412 OVER B.N.R.R.
LEE COUNTY
STATION 1175+47.10
STATE OF ILLINOIS
DEPARTMENT OF TRANSPORTATION

FOR INFORMATION ONLY