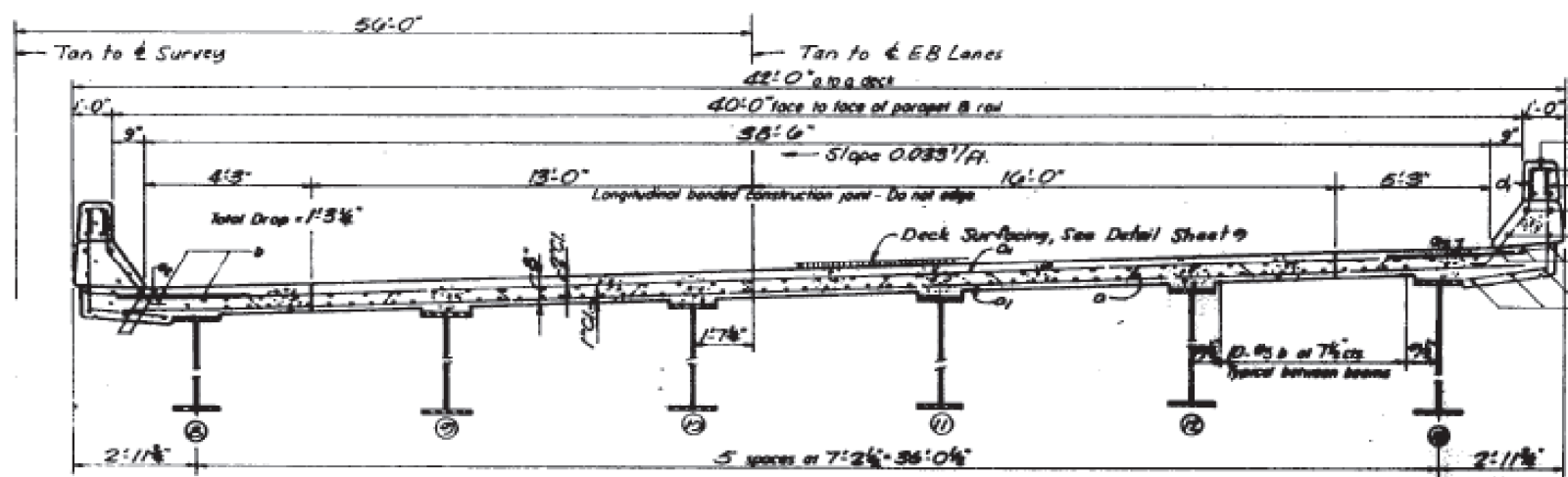
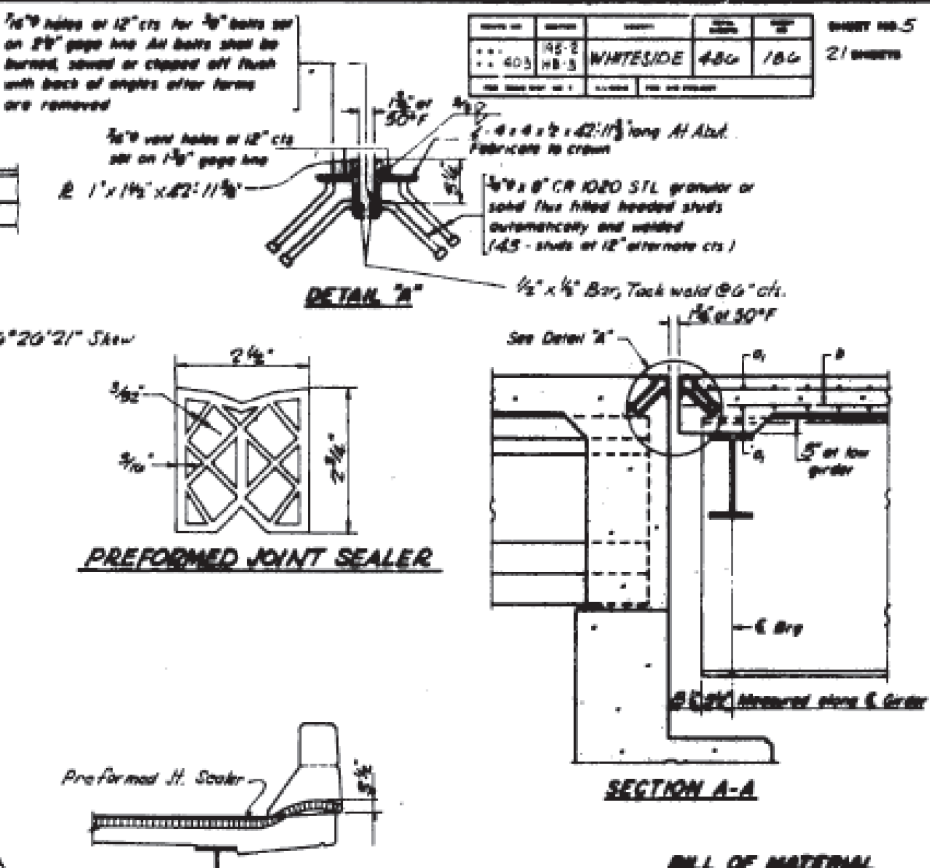
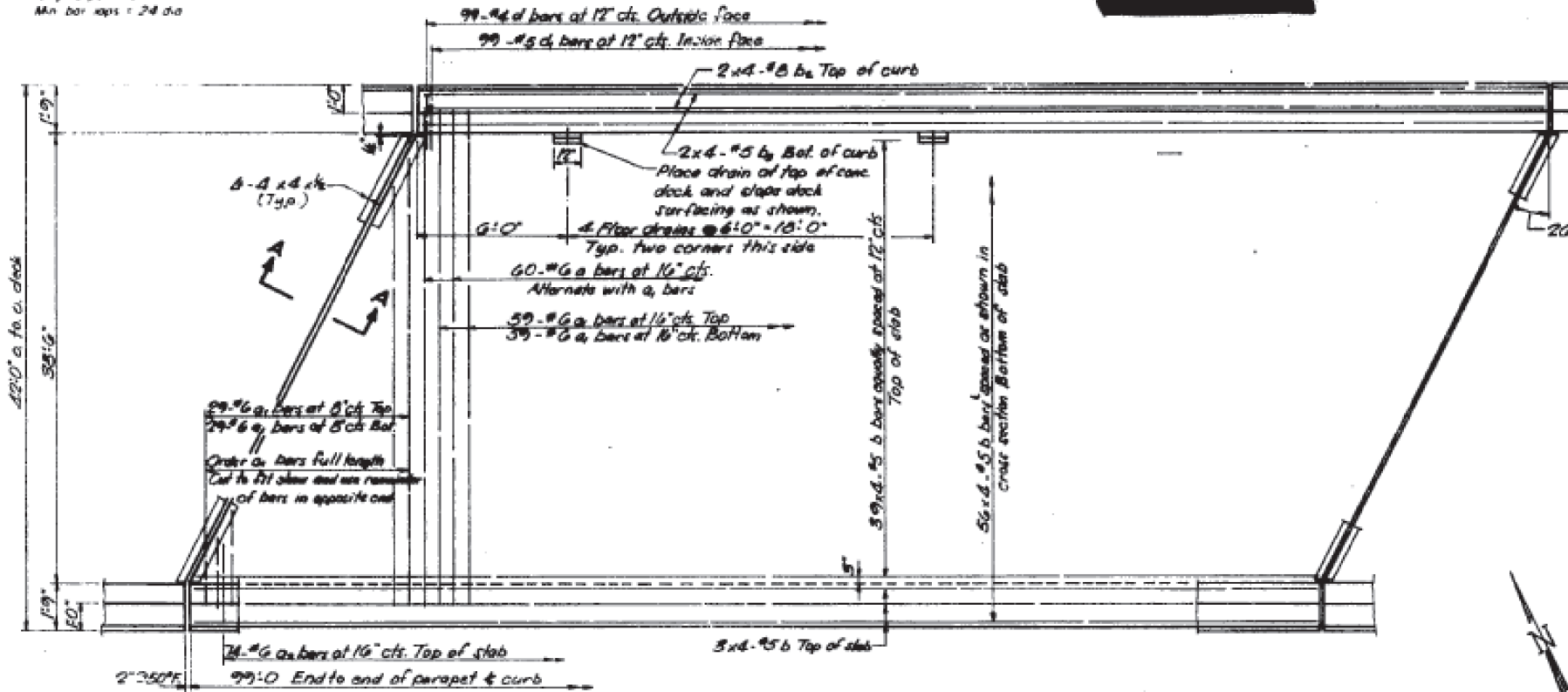


NOTE

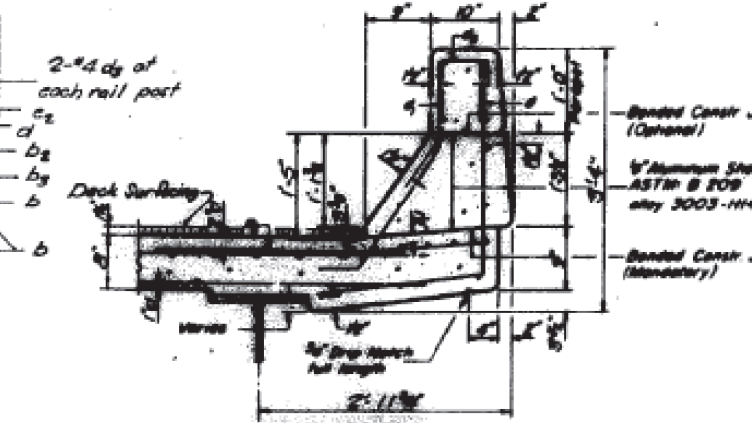
Bars indicated thus 21 x 3 #5 etc indicates 20 wts of bars with 3 lengths per wt. Min. bar wts = 24 lbs

STATE OF ILLINOIS

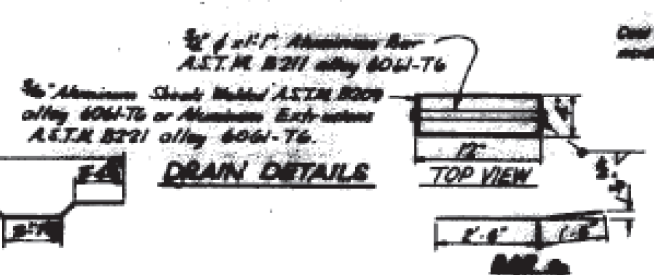
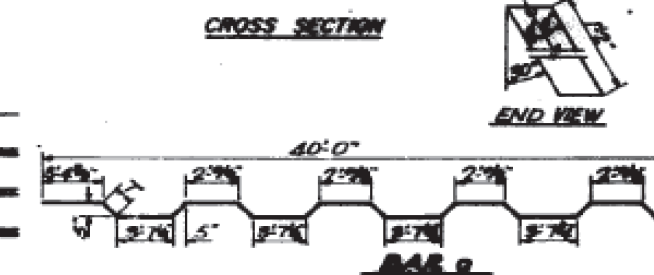
PROJECT NO.	403	SECTION	195-2	COUNTY	WHITESIDE	STATION	480+00 TO 480+100	SHEET NO.	21	TOTAL SHEETS	21
-------------	-----	---------	-------	--------	-----------	---------	-------------------	-----------	----	--------------	----



NOTE: For placement of bars d₁ and d₂ see sheet #11.



DESIGNED	G.D.C.	EXAMINED	
CHECKED	H.M.W.	PASSED	
DRAWN	G.D.C.	APPROVED	
CHECKED	H.M.W.		



BILL OF MATERIAL

Bar	No.	Size	Length	Notes
a	60	#6	41'-6"	
a ₁	176	#6	40'-0"	
a ₂	145	#6	4'-0"	
b	404	#5	28'-0"	
b ₁	16	#5	20'-3"	
b ₂	10	#5	22'-5"	
c	195	#4	21'-4"	
d	195	#4	3'-5"	
Reinforcement Bars		Lbs	24,500	
Class X Concrete		Cu Yds	107.3	

Parapet Reinforcement and Class X Concrete are listed on sheet #11.

SUPERSTRUCTURE, E.B. BRIDGE
 F.A. RTE. 403-SEC. 195-2HB-3
 WHITESIDE COUNTY
 STATION 2188+88.04

S-546-L(307) 4-22-68, 12-3-69