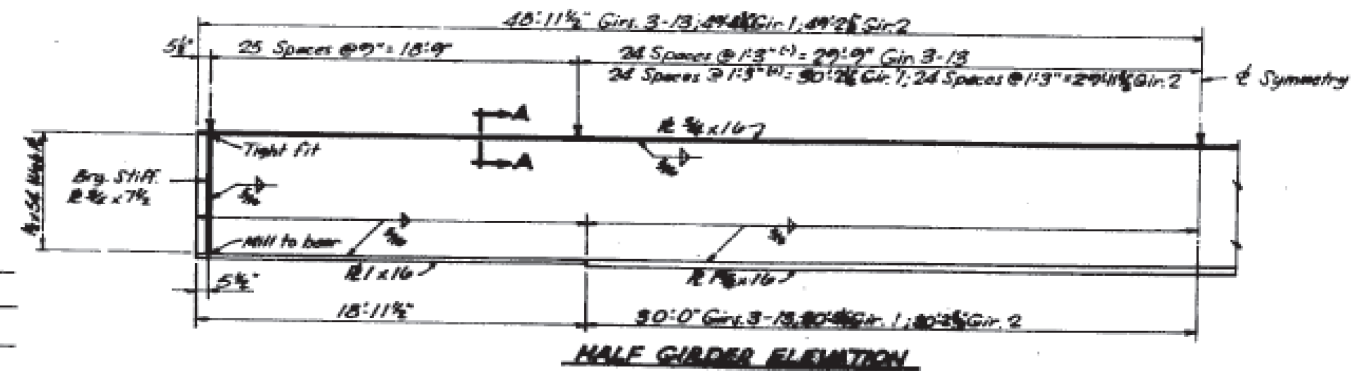
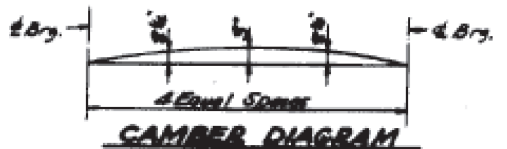
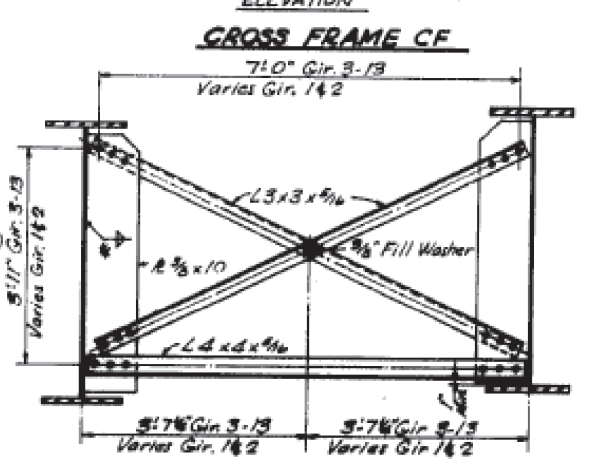
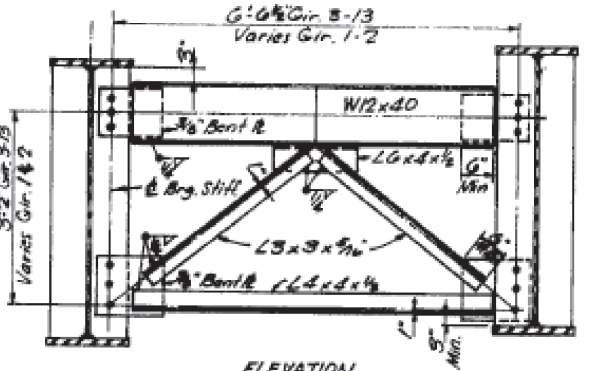
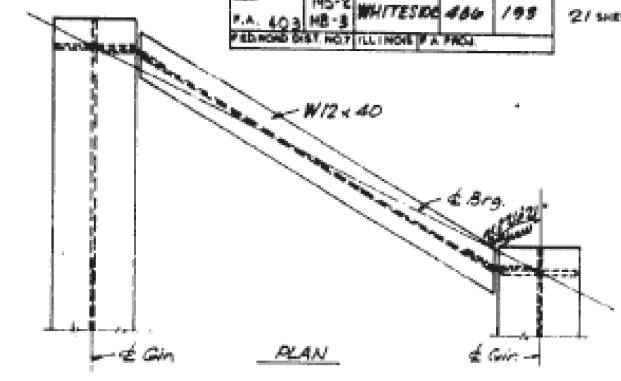
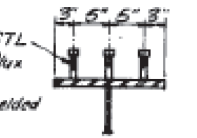


Member	End	Moment (k-ft)
1-2	1	24.389
1-2	2	1.857
2-3	2	1.078
2-3	3	13.42
3-4	3	4.37
3-4	4	22.344
4-5	4	1.928
4-5	5	0.452
5-6	5	5.92
5-6	6	3.31
6-7	6	90.249
6-7	7	2.117
7-8	7	9.77
7-8	8	2.20
8-9	8	1.97
8-9	9	6.79
9-10	9	19.67
9-10	10	5.91

Reaction	Abut.
Rea. (k)	72.7
Rea. (k)	48.2
Imp. (k)	10.9
R TOTAL (k)	131.8

Girder	W. Abut.	E. Abut.
1	649.884	646.876
2	649.573	649.159
3	649.811	649.441
4	650.058	649.727
5	650.305	649.962
6	650.551	650.207
7	650.797	650.442
8	650.602	650.262
9	650.342	650.013
10	650.066	650.003
11	649.928	649.714
12	649.869	649.462
13	649.810	649.214

3/4" x 4" CR 1020 STL
granular or solid flux
filled headed studs
automatically and welded



DESIGNED	A.K.C.	EXAMINED	
CHECKED	H.M.N.	PASSED	
DRAWN	C.D.C.	APPROVED	
CHECKED	H.M.N.		

STRUCTURAL STEEL
F.A. RTE. 403-SEC. 195-2 HB-3
WHITESIDE COUNTY
STATION 2188+88.04