

STATE OF ILLINOIS
DEPARTMENT OF TRANSPORTATION
DIVISION OF HIGHWAYS

**PROPOSED
HIGHWAY PLANS**

FAP ROUTE 557 (IL 72)
SECTION (128)RS-5 & 1-2
PROJECT: ACHSIP-0557 (281)
SUPERELEVATION CURVE CORRECTION
DEKALB COUNTY

C-93-030-14

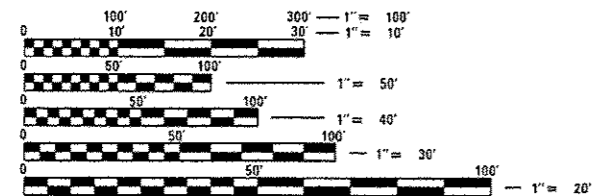
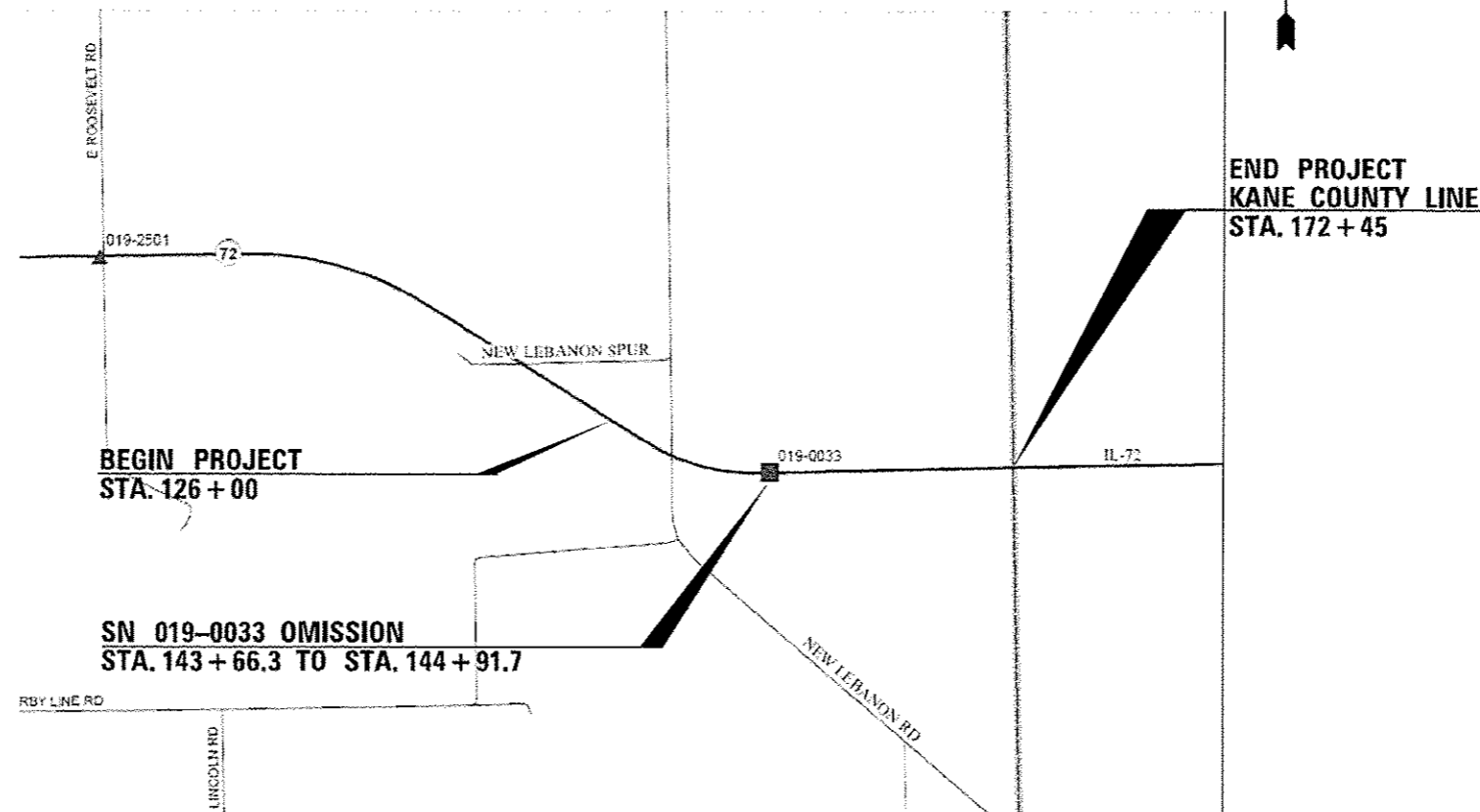
F.A.P. RTE.	SECTION	COUNTY	TOTAL SHEETS	SHEET NO.
557	(128)RS-5 & 1-2	DEKALB	11	1
ILLINOIS			CONTRACT NO. 66D37	

INDEX OF SHEETS

- 1 COVER SHEET
- 2 GENERAL NOTES
- 3-4 SUMMARY OF QUANTITIES
- 5 TYPICAL SECTION
- 6 SCHEDULE OF QUANTITIES
- 7 SECTION CORNER TIE POINTS
- 8-9 PROJECT LAYOUT
- 10-11 DETAILS

HIGHWAY STANDARDS

- 000001-06 STANDARD SYMBOLS, ABBREVIATIONS AND PATTERNS
- 001001-02 AREAS OF REINFORCEMENT BARS
- 001006 DECIMAL OF AN INCH AND OF A FOOT
- 280001-07 TEMPORARY EROSION CONTROL SYSTEMS
- 482001-02 HMA SHOULDER ADJACENT TO FLEXIBLE PAVEMENT
- 482011-03 HMA SHOULDER STRIPS/SHOULDERS WITH RS OR WIDENING & RS PROJECTS
- 642006 SHOULDER RUMBLE STRIPS, 8 INCH
- 701006-05 OFF-ROAD OPERATIONS 2L, 2W, 15' (4.5 m) TO 24" (600 mm) FROM PAVEMENT EDGE
- 701011-04 OFF-ROAD MOVING OPERATIONS 2L, 2W, DAY ONLY
- 701301-04 LANE CLOSURE, 2L, 2W, SHORT TIME OPERATIONS
- 701306-03 LANE CLOSURE, 2L, 2W, SLOW MOVING OPERATIONS DAY ONLY, FOR SPEEDS ≤ 45 MPH
- 701326-04 LANE CLOSURE, 2L, 2W, PAVEMENT WIDENING FOR SPEEDS > 45 MPH
- 701311-03 LANE CLOSURE, 2L, 2W, MOVING OPERATIONS - DAY ONLY
- 701901-03 TRAFFIC CONTROL DEVICES
- 720011-01 METAL POSTS FOR SIGNS, MARKERS AND DELINEATORS
- 780001-04 TYPICAL PAVEMENT MARKINGS
- 781001-03 TYPICAL APPLICATIONS RAISED REFLECTIVE PAVEMENT MARKERS



FULL SIZE PLANS HAVE BEEN PREPARED USING STANDARD ENGINEERING SCALES. REDUCED SIZED PLANS WILL NOT CONFORM TO STANDARD SCALES. IN MAKING MEASUREMENTS ON REDUCED PLANS, THE ABOVE SCALES MAY BE USED.

J.U.L.I.E.
JOINT UTILITY LOCATION INFORMATION FOR EXCAVATION
1-800-892-0123
OR 811

PROJECT ENGINEER: JOE KANNEL, P.E.
UNIT CHIEF: SCOTT FERGUSON, P.E.
DISTRICT NO. (815)-434-6131
CONTRACT NO. 66D37

GROSS LENGTH = 8383 FT. = 1.59 MILE
NET LENGTH = 8508.4 FT. = 1.61 MILE

FUNCTIONAL CLASSIFICATION
OTHER PRINCIPAL ARTERIAL (RURAL)
2013 ADT = 6000
PV = 88.33% SU = 4.17% MU = 7.5%

STATE OF ILLINOIS
DEPARTMENT OF TRANSPORTATION
DIVISION OF HIGHWAYS

SUBMITTED Mar 28 2014
Paul Coate, P.E.
DEPUTY DIRECTOR OF HIGHWAYS, REGION ENGINEER

May 9 2014
John D. Baranzelli, P.E.
ENGINEER OF DESIGN AND ENVIRONMENT

May 9 2014
Chris Camman, P.E.
DIRECTOR OF HIGHWAYS, CHIEF ENGINEER

PRINTED BY THE AUTHORITY
OF THE STATE OF ILLINOIS