

STATE OF ILLINOIS
DEPARTMENT OF TRANSPORTATION
DIVISION OF HIGHWAYS

**PROPOSED
HIGHWAY PLANS**

FAP ROUTE 557 (IL 72)
SECTION (128)RS-5 & 1-2
PROJECT: ACHSIP-0557 (281)
SUPERELEVATION CURVE CORRECTION
DEKALB COUNTY

C-93-030-14

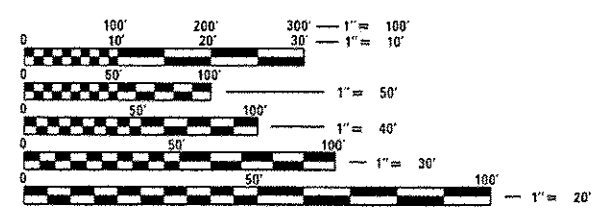
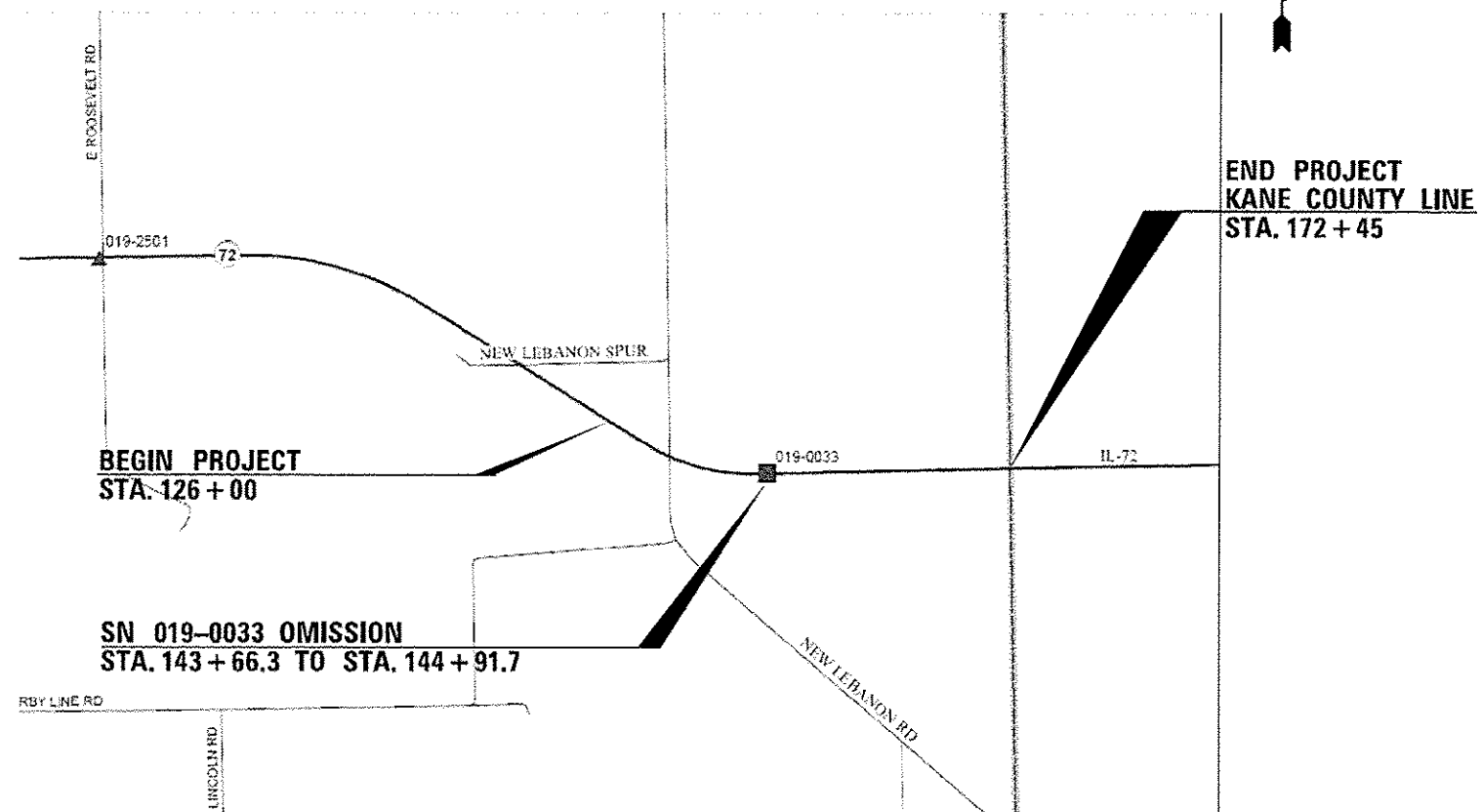
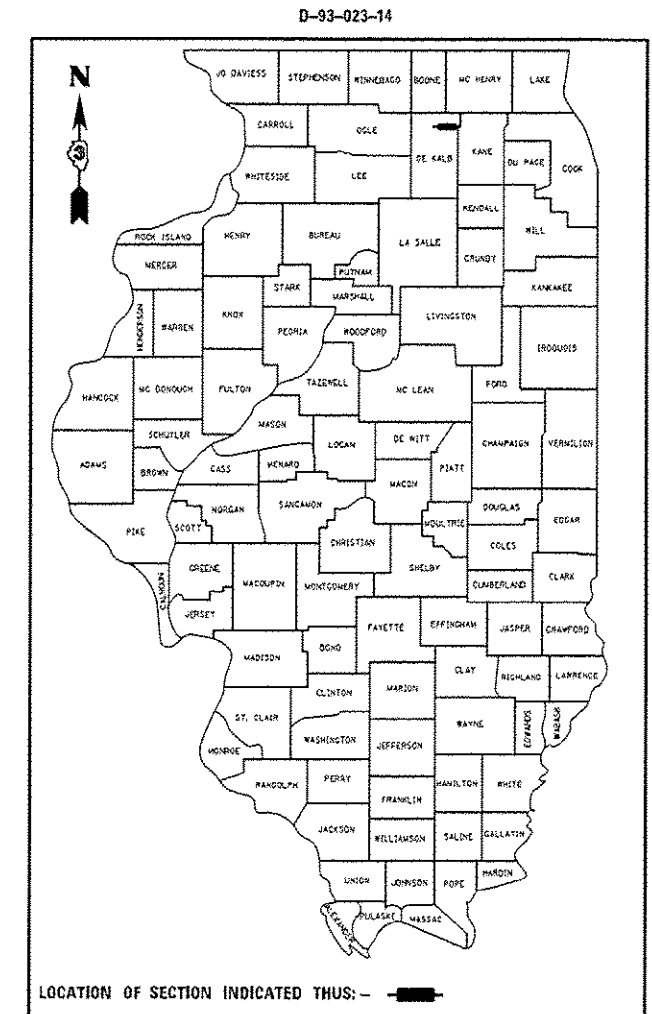
F.A.P. RTE.	SECTION	COUNTY	TOTAL SHEETS	SHEET NO.
557	(128)RS-5 & 1-2	DEKALB	11	1
ILLINOIS			CONTRACT NO. 66D37	

INDEX OF SHEETS

- 1 COVER SHEET
- 2 GENERAL NOTES
- 3-4 SUMMARY OF QUANTITIES
- 5 TYPICAL SECTION
- 6 SCHEDULE OF QUANTITIES
- 7 SECTION CORNER TIE POINTS
- 8-9 PROJECT LAYOUT
- 10-11 DETAILS

HIGHWAY STANDARDS

- 000001-06 STANDARD SYMBOLS, ABBREVIATIONS AND PATTERNS
- 001001-02 AREAS OF REINFORCEMENT BARS
- 001006 DECIMAL OF AN INCH AND OF A FOOT
- 280001-07 TEMPORARY EROSION CONTROL SYSTEMS
- 482001-02 HMA SHOULDER ADJACENT TO FLEXIBLE PAVEMENT
- 482011-03 HMA SHOULDER STRIPS/SHOULDERS WITH RS OR WIDENING & RS PROJECTS
- 642006 SHOULDER RUMBLE STRIPS, 8 INCH
- 701006-05 OFF-ROAD OPERATIONS 2L, 2W, 15' (4.5 m) TO 24" (600 mm) FROM PAVEMENT EDGE
- 701011-04 OFF-ROAD MOVING OPERATIONS 2L, 2W, DAY ONLY
- 701301-04 LANE CLOSURE, 2L, 2W, SHORT TIME OPERATIONS
- 701306-03 LANE CLOSURE, 2L, 2W, SLOW MOVING OPERATIONS DAY ONLY, FOR SPEEDS ≤ 45 MPH
- 701326-04 LANE CLOSURE, 2L, 2W, PAVEMENT WIDENING FOR SPEEDS > 45 MPH
- 701311-03 LANE CLOSURE, 2L, 2W, MOVING OPERATIONS - DAY ONLY
- 701901-03 TRAFFIC CONTROL DEVICES
- 720011-01 METAL POSTS FOR SIGNS, MARKERS AND DELINEATORS
- 780001-04 TYPICAL PAVEMENT MARKINGS
- 781001-03 TYPICAL APPLICATIONS RAISED REFLECTIVE PAVEMENT MARKERS



FULL SIZE PLANS HAVE BEEN PREPARED USING STANDARD ENGINEERING SCALES. REDUCED SIZED PLANS WILL NOT CONFORM TO STANDARD SCALES. IN MAKING MEASUREMENTS ON REDUCED PLANS, THE ABOVE SCALES MAY BE USED.

J.U.L.I.E.
JOINT UTILITY LOCATION INFORMATION FOR EXCAVATION
1-800-892-0123
OR 811

PROJECT ENGINEER: JOE KANNEL, P.E.
UNIT CHIEF: SCOTT FERGUSON, P.E.
DISTRICT NO. (815)-434-6131
CONTRACT NO. 66D37

GROSS LENGTH = 8383 FT. = 1.59 MILE
NET LENGTH = 8508.4 FT. = 1.61 MILE

FUNCTIONAL CLASSIFICATION
OTHER PRINCIPAL ARTERIAL (RURAL)
2013 ADT = 6000
PV = 88.33% SU = 4.17% MU = 7.5%

STATE OF ILLINOIS
DEPARTMENT OF TRANSPORTATION
DIVISION OF HIGHWAYS

SUBMITTED Mar 28 2014
Paul Coate, P.E.
DEPUTY DIRECTOR OF HIGHWAYS, REGION ENGINEER

May 9 2014
John D. Baranzelli, P.E.
ENGINEER OF DESIGN AND ENVIRONMENT

May 9 2014
Chris Camman, P.E.
DIRECTOR OF HIGHWAYS, CHIEF ENGINEER

PRINTED BY THE AUTHORITY
OF THE STATE OF ILLINOIS

GENERAL NOTES

THE THICKNESS OF HMA SHOWN ON THE PLANS IS THE NOMINAL THICKNESS. DEVIATIONS FROM THE NOMINAL THICKNESS WILL BE PERMITTED WHEN SUCH DEVIATIONS OCCUR DUE TO IRREGULARITIES IN THE EXISTING SURFACE OR BASE ON WHICH THE HMA IS PLACED.

THE HMA SURFACE OF ALL MAILBOX TURNOUTS, PRIVATE ENTRANCES, COMMERCIAL ENTRANCES, AND SIDE ROADS SHALL BE MADE NEATLY, IN A WORKMANLIKE MANNER, AND SHALL ACCURATELY CONFORM TO THE SHAPES AND DIMENSIONS SHOWN ON THE PLAN DETAILS. IF REQUIRED BY THE ENGINEER, THE CONTRACTOR SHALL SAW CUT THE HMA SURFACE TO CONFORM TO THE SHAPES AND DIMENSIONS SHOWN ON THE PLAN DETAILS. THIS WORK WILL BE INCLUDED IN THE COST OF THE HMA SURFACE.

EXCEPT AS NOTED ON THE PLANS, PAVEMENT GRADES SHOWN ARE AT THE TOP OF PAVEMENT SURFACES.

THE ENGINEER WILL BE THE SOLE JUDGE CONCERNING CURING TIME FOR THE VARIOUS HMA LIFTS.

FOR STABILIZATION, ALL TYPE III BARRICADES WILL REQUIRE A MINIMUM OF FOUR SAND BAGS PER BARRICADE.

SEEDING WILL NOT BE PERMITTED AT ANY TIME WHEN THE GROUND IS FROZEN, WET, OR IN AN UNTILLABLE CONDITION. LOCATIONS TO BE SEEDED WILL BE DETERMINED BY THE ENGINEER.

ONLY THOSE TREES DESIGNATED BY THE ENGINEER OR LISTED IN THE TREE REMOVAL SCHEDULE SHALL BE REMOVED. THE CONTRACTOR SHALL PROTECT ALL REMAINING TREES FROM DAMAGE DUE TO HIS OPERATIONS.

THE FINISHED EARTHWORK SHALL HAVE A VEGETATION SUSTAINING SOIL COVERING THE TOP FOUR INCHES (100 MILLIMETERS) IN AREAS TO BE SEEDED OR SOODED. THE VEGETATION SUSTAINING SOIL REQUIRED WILL NOT BE PAID FOR SEPARATELY BUT WILL BE INCLUDED IN THE COST OF FURNISHED EXCAVATION

ON EXISTING PAVEMENT WHICH MAY BE SUPERELEVATED, THE NEW HMA PAVEMENT SHALL BE BUILT WITH THE SAME SUPERELEVATION UNLESS NEW SUPERELEVATION RATES ARE GIVEN ON THE PLANS.

ALL ELEVATIONS REFERRING TO U.S.G.S. MEAN SEA LEVEL DATUM.

ADDITIONAL LEVELING BINDER, AT THE RATE GIVEN ON THE TYPICAL SECTIONS, HAS BEEN ADDED TO THE QUANTITIES TO CORRECT TO A 3/16"/FT. (1.5%) CROWN ON SECTIONS OF EXISTING ROADWAYS.

ABANDONED UNDERGROUND UTILITIES THAT CONFLICT WITH CONSTRUCTION SHALL BE DISPOSED OF OUTSIDE THE LIMITS OF THE RIGHT OF WAY ACCORDING TO ARTICLE 202.03 OF THE STANDARD SPECIFICATIONS AND AS DIRECTED BY THE ENGINEER. THIS WORK WILL NOT BE PAID FOR SEPARATELY, BUT WILL BE INCLUDED IN THE COST OF EARTH EXCAVATION.

ANY REFERENCE TO A STANDARD IN THESE PLANS SHALL BE INTERPRETED TO MEAN THE EDITION AS INDICATED BY THE SUBNUMBER SHOWN IN THE LIST OF STANDARDS OR THE COPY INCLUDED IN THESE PLANS.

THE FOLLOWING RATES OF APPLICATION HAVE BEEN USED IN CALCULATING PLAN QUANTITIES:

GRANULAR MATERIALS	2.05	TONS / CU YD
HMA RESURFACING	112	LBS / SQ YD / IN
SHORT TERM PAVEMENT MARKING	10	FT /100 FT OF APPLICATION
MIX FOR CRACKS, JTS & FLGWYS	0.0003	TONS / SQ YD
LEVEL BINDER (HAND METHOD)	0.0005	TONS / SQ YD

GENERAL NOTES

THE CONTRACTOR'S ATTENTION IS DIRECTED TO THE PRESENCE OF DEPARTMENT-OWNED UNDERGROUND ELECTRICAL CABLE WITHIN THE LIMITS OF THE PROPOSED IMPROVEMENT. THE CONTRACTOR SHALL REQUEST THE ILLINOIS DEPARTMENT OF TRANSPORTATION IN OTTAWA (815-434-8417) TO LOCATE THE UNDERGROUND FACILITIES, PROVIDING A MINIMUM OF 72 HOURS NOTICE. THE DEPARTMENT IS NOT A MEMBER OF THE JOINT UTILITY LOCATING INFORMATION FOR EXCAVATORS (JULIE) SYSTEM.

ALL DAMAGE TO DEPARTMENT OWNED UNDERGROUND FACILITIES, CAUSED BY THE CONTRACTOR SHALL BE REPAIRED TO THE SATISFACTION OF THE DEPARTMENT AT THE CONTRACTOR'S EXPENSE. THIS SHALL INCLUDE ALL TEMPORARY REPAIRS REQUIRED TO KEEP THE FACILITY OPERATIONAL WHILE MATERIAL IS BEING OBTAINED TO MAKE PERMANENT REPAIRS. SPLICING OF ELECTRIC CABLE WILL NOT BE ALLOWED. ELECTRIC CABLE SHALL BE REPLACED FROM POLE TO POLE OR CONTROLLER.

THE WORK REQUIRED TO CONNECT ANY SEWER TO AN EXISTING DRAINAGE STRUCTURE OR PIPE WILL NOT BE PAID FOR SEPARATELY, BUT WILL BE CONSIDERED AS INCLUDED IN THE CONTRACT UNIT PRICE BID FOR THE SEWER ITEMS.

MEMBERS OF JULIE KNOWN TO BE WITHIN THE LIMITS OF THE IMPROVEMENT ARE: NONE

NON-MEMBERS OF JULIE KNOWN TO BE WITHIN THE LIMITS OF THE IMPROVEMENT ARE: NONE

THE CONTRACTOR SHALL CONTACT JULIE AT LEAST 48 HOURS PRIOR TO EXCAVATION TO DETERMINE WHICH UTILITIES ARE IN THE AREA.

STATE OF ILLINOIS
DEPARTMENT OF TRANSPORTATION
DISTRICT THREE

PREPARED BY: *D. Brail*
DISTRICT STUDIES & PLANS ENGINEER

DATE: 3-28-14

EXAMINED BY: *Harold Perry (w)*
DISTRICT CONSTRUCTION ENGINEER

Ray [Signature]
DISTRICT MATERIALS ENGINEER

Bruce A. [Signature]
DISTRICT OPERATIONS ENGINEER

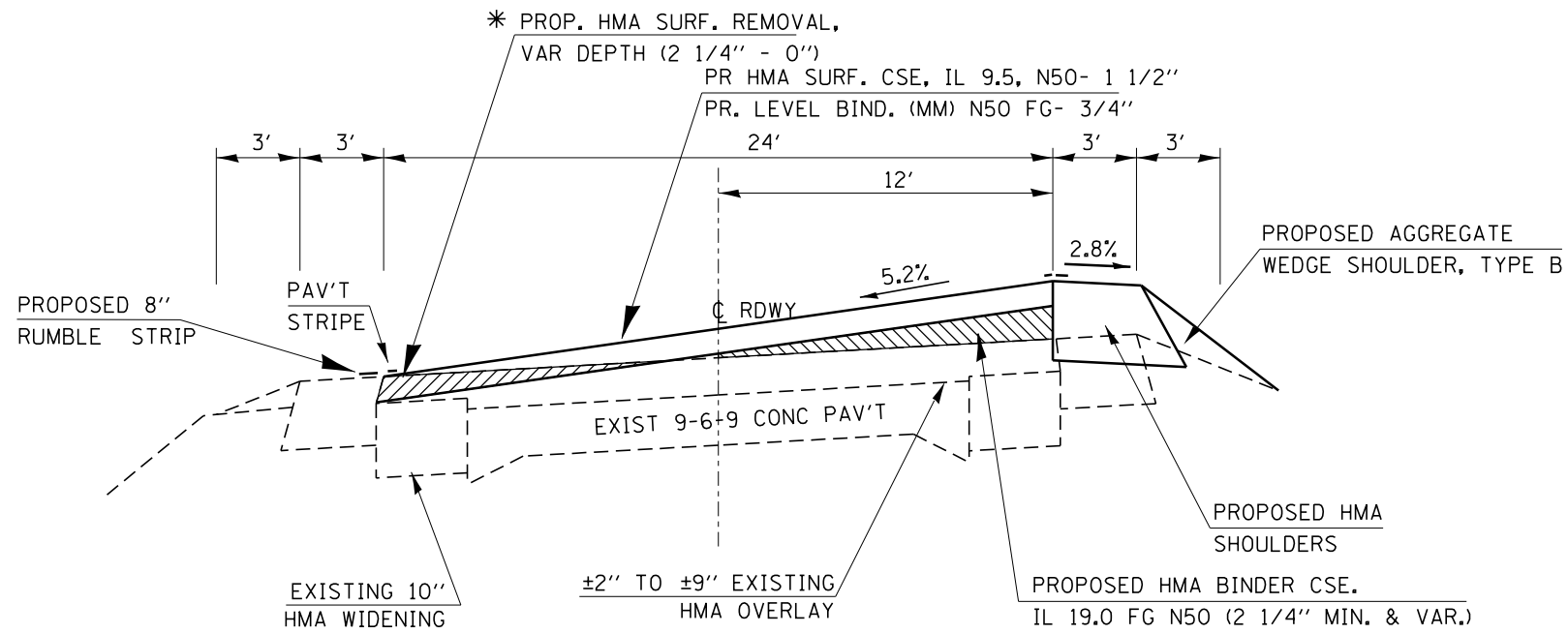
FILE NAME *	USER NAME * mcfaddenka	DESIGNED -	REVISED -	STATE OF ILLINOIS DEPARTMENT OF TRANSPORTATION	GENERAL NOTES	F.A.P. RTE.	SECTION	COUNTY	TOTAL SHEETS	SHEET NO.
alhpw_vork\k\mcfaddenka\d0366381\0366037-shs-cover.dgn	DRAWN -	REVISED -	557			(128)RS-5 & 1-2	DEKALB	11	2	
PLOT SCALE * 1/8"=1'-0" / in.	CHECKED -	REVISED -	CONTRACT NO. 66037							
PLOT DATE * 3/28/2014	DATE -	REVISED -	SCALE:			SHEET OF SHEETS	STA. TO STA.	ILLINOIS FED. AID PROJECT		

DATE: 4/2/2014

CODE NO	ITEM	UNIT	TOTAL QUANTITY	CONSTRUCTION TYPE CODE	
				HSIP FUNDS	RDWY 0005 RURAL
64200108	SHOULDER RUMBLE STRIPS, 8 INCH	FOOT	9139	9139	
67100100	MOBILIZATION	LSUM	1	1	
70100460	TRAFFIC CONTROL AND PROTECTION, STANDARD 701306	LSUM	1	1	
70300100	SHORT TERM PAVEMENT MARKING	FOOT	733	733	
70301000	WORK ZONE PAVEMENT MARKING REMOVAL	SO FT	244	244	
* 78009004	MODIFIED URETHANE PAVEMENT MARKING - LINE 4"	FOOT	6593	6593	
* 78009006	MODIFIED URETHANE PAVEMENT MARKING - LINE 6"	FOOT	152	152	
* 78100100	RAISED REFLECTIVE PAVEMENT MARKER	EACH	23	23	
78300200	RAISED REFLECTIVE PAVEMENT MARKING REMOVAL	EACH	23	23	
X4060110	BITUMINOUS MATERIALS (PRIME COAT)	POUND	3676	3676	
X4401198	HOT-MIX ASPHALT SURFACE REMOVAL, VARIABLE DEPTH	SO YD	2421	2421	

*Specialty Items

FILE NAME =	USER NAME = ferguson	DESIGNED -	REVISED -	STATE OF ILLINOIS DEPARTMENT OF TRANSPORTATION	SUMMARY OF QUANTITIES				F.A.P. RTE.	SECTION	COUNTY	TOTAL SHEETS	SHEET NO.		
ca:\p\work\p\d\ferguson\49366351\0366037-ant-over.dgn		DRAWN -	REVISED -		SCALE:	SHEET	OF	SHEETS	STA.	TO STA.	557	028RS-5 & I-2	DEKALB	11	4
PLOT SCALE = 1/8" = 1'-0"		CHECKED -	REVISED -										CONTRACT NO. 66037		
PLOT DATE = 4/2/2014		DATE -	REVISED -										ILLINOIS FED. AID PROJECT		

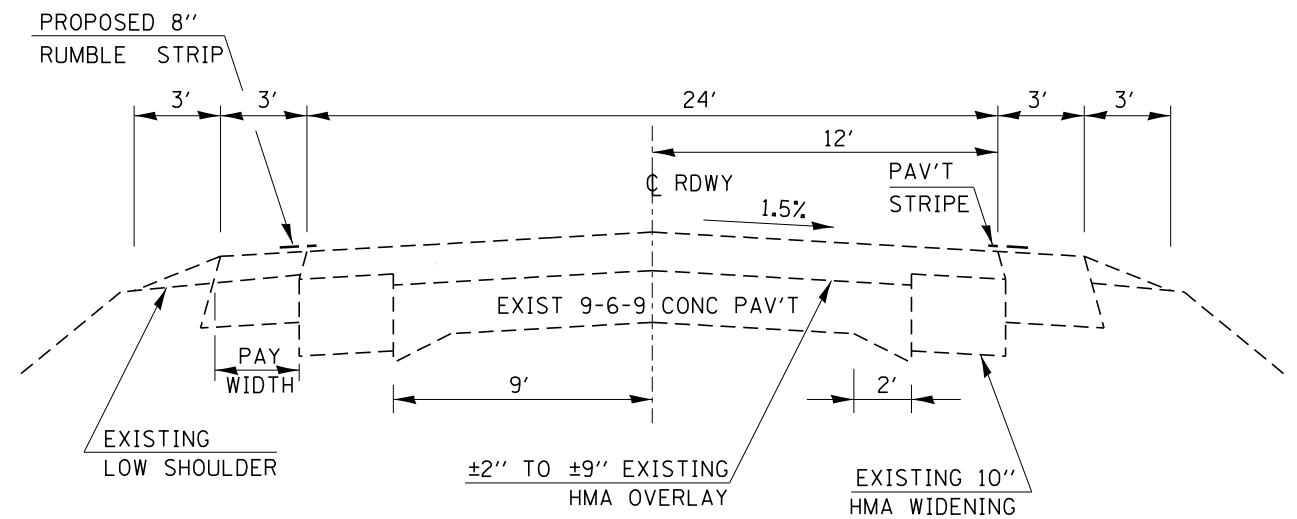


**PROPOSED TYPICAL SECTION
FULL SUPER ELEVATION
LOOKING EAST**

STA. 126+00 TO STA. 143+66.3

* REDUCE MILLING DEPTH IF NECESSARY TO
PREVENT MILLING EXISTING CONCRETE PAVEMENT

MIXTURES TABLE					
	HMA BINDER CSE.	HMA LEVEL BINDER	HMA SURFACE	INCIDENTAL HMA	HMA SHOULDERS
PG GRADE	PG64-22	PG64-22	PG64-22	PG64-22	PG64-22
DESIGN AIR VOIDS	4.0% @ N50	4.0% @ N50	4.0% @ N50	4.0% @ N50	4.0% @ N50
MIXTURE COMPOSITION	IL 19.0 FG	IL 9.5 FG	IL 9.5	IL 9.5	IL 19.0 FG
FRICTION AGGREGATE			MIXTURE D	MIXTURE C	
DENSITY TEST METHOD	CORES	CORES	CORES	SATISFACTION OF ENGINEER	CORES



**PROPOSED TYPICAL SECTION
STA. 144+91.7 TO STA. 172+45**

FILE NAME =	USER NAME = fergusonse	DESIGNED -	REVISED -
c:\pwwork\pwwork\fergusonse\d0366351\0366037-sht-cover.dgn		DRAWN -	REVISED -
PLOT SCALE = 100.0000' / 1in.		CHECKED -	REVISED -
PLOT DATE = 4/2/2014		DATE -	REVISED -

**STATE OF ILLINOIS
DEPARTMENT OF TRANSPORTATION**

TYPICAL SECTION			
SCALE:	SHEET	OF SHEETS	STA. TO STA.

F.A.P. RTE.	SECTION	COUNTY	TOTAL SHEETS	SHEET NO.
557	(128)RS-5 & 1-2	DEKALB	11	5
CONTRACT NO. 66D37				
ILLINOIS FED. AID PROJECT				

MAINLINE SCHEDULE

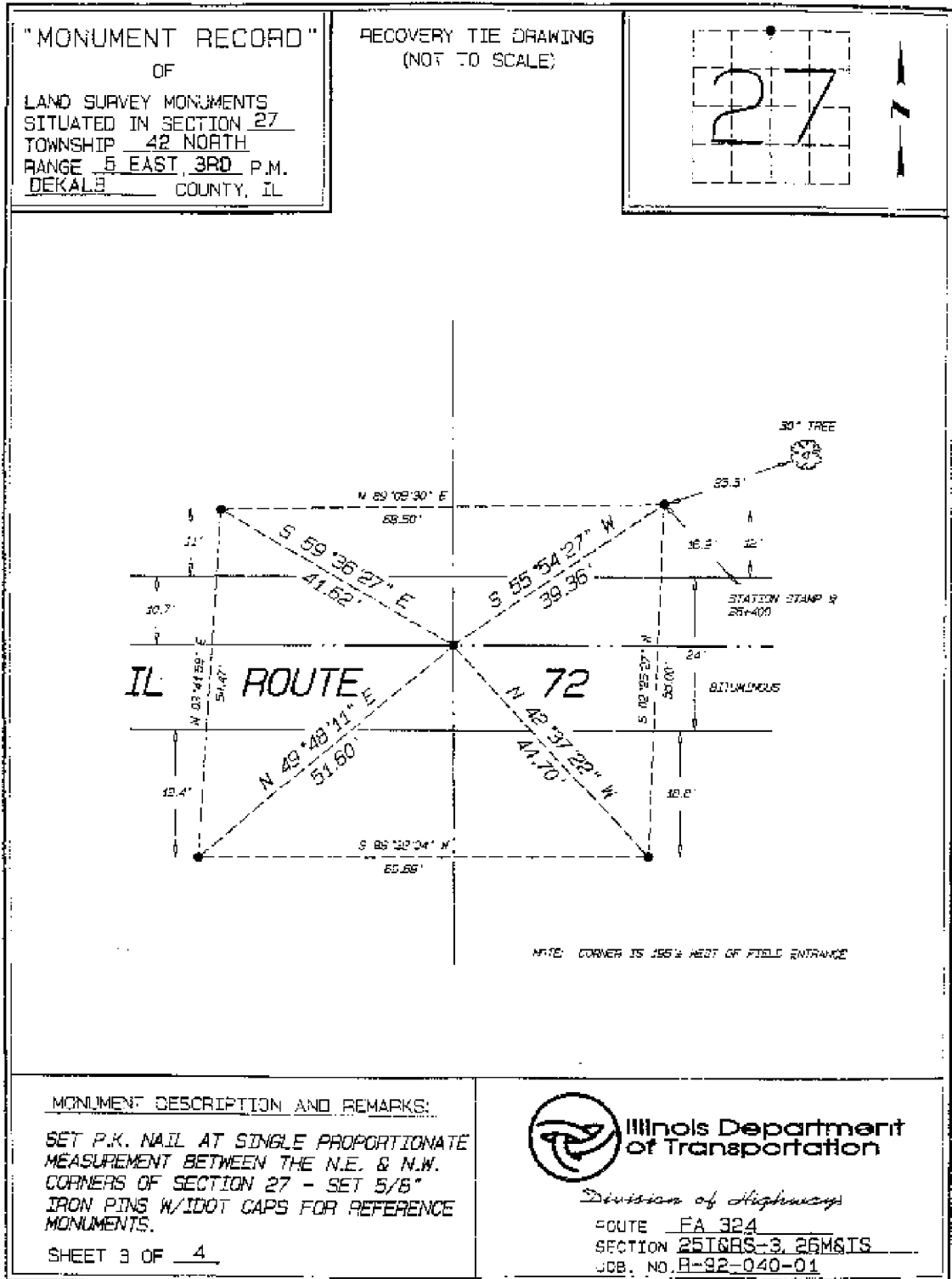
		LENGTH	HMA BINDER CSE. IL 19.0 FG N50	BIT. MAT. PRIME COAT	HMA LEVEL BINDER	HMA SURF. CSE. IL 9.5 FG N50	HMA SURF. REM. VAR. DEPTH	AGG SHLDR TYPE B	HMA SHOULDER REMOVAL	HMA INCIDENTAL BIT SURF	HMA SHOULDER	SHLDR RUMBLE STRIPS 8"	TEMP RAMP
IL-72 EAST OF IL 23		FOOT	TON	POUND	TON	TON	SQ YD	TON	SQ YD	TON	TON	FOOT	
START PROJECT	STA 126+00 TO STA 129+14.78 PC CURVE 2	315		567	35	71	420	36				630	20
	STA 129+14.78 TO STA 142+36.09 PT CURVE 2	1321	250	2675	148	296	1761	150			111	2642	
	STA 142+36.09 TO STA 143+66.3 Approach Pvmnt Bridge	180		365	20	40	240	21	80	35	36	360	20
	STA. 143+66.3 TO STA 144+91.7	125.4											
PROJECT ENDS	STA. 144+91.7 TO STA 172+45 Kane County Line	2753										5507	
	GRAND TOTAL	4695	250	3607	203	407	2421	207	80	35	147	9139	40

PAVEMENT MARKING

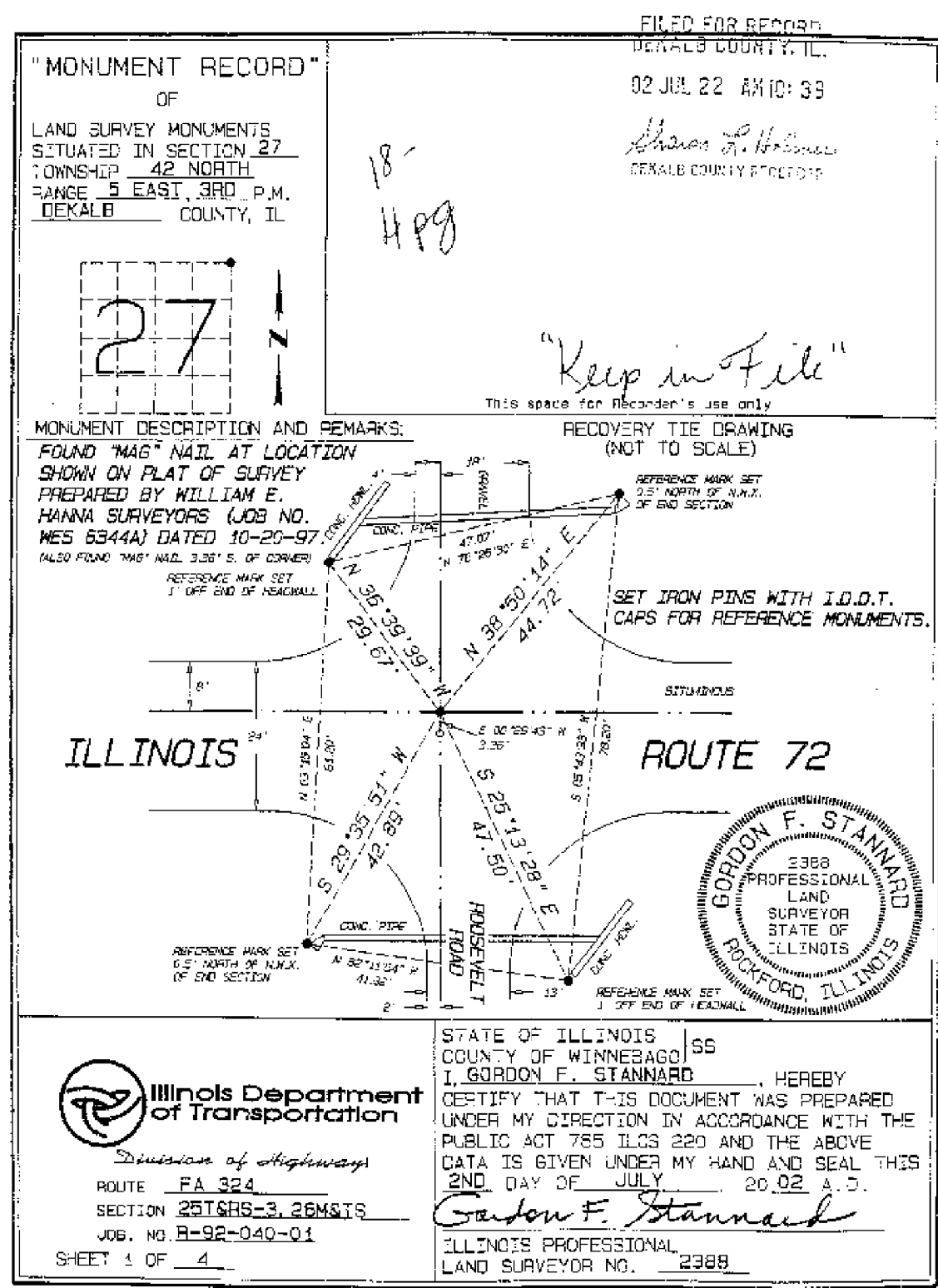
	LOCATION STA. TO STA.	DESCRIPTION	LENGTH FOOT	MODIFIED URETHANE			SHORT TERM PAVT MKING FOOT	WORK ZONE PAVT MKR REMOVAL SQ FT	RAISED REFLECTIVE PAVT MKR EACH	RAISED REFLEC PAVT MKR REMOVAL EACH
				LINE 4"		LINE 6"				
				WHITE FOOT	YELLOW FOOT	YELLOW FOOT				
CENTERLINES										
PROJECT BEGINS	125+33 TO 131+39	DASH LT, SOLID RT	606		606	152	242	81	8	8
	131+39 TO 143+66.3	DOUBLE SOLID	1227		2455		491	164	15	15
	143+66.3 TO 144+91.7									
PROJECT ENDS	144+91.7 TO 172+45 Kane County Line	NO WORK	2753							
EDGELINES										
PROJECT BEGINS	126+00 TO 143+66.3	SOLID LT & RT	1766	3533						
	143+66.3 TO 144+91.7									
PROJECT ENDS	144+91.7 TO 172+45 Kane County Line	NO WORK	2753							
	GRAND TOTAL			3533	3061	152	733	244	23	23

SEEDING SCHEDULE

		LENGTH	FURNISHED EXCAVATION	MULCH METHOD	SEEDING CLASS	NITROGEN FERT NUTRIENT	PHOSPHORUS FERT NUTRIENT	POTASSIUM FERT NUTRIENT
IL-72 EAST OF IL 23		FOOT	CU YD	2 ACRE	2A ACRE	POUND	POUND	POUND
START PROJECT	STA 126+00 TO STA 129+14.78 PC CURVE 2	315						
	STA 129+14.78 TO STA 142+36.09 PT CURVE 2	1321	245	0.25	0.25	23	23	23
	STA 142+36.09 TO STA 143+66.3	130						
	STA. 143+66.3 TO STA 144+91.7							
PROJECT ENDS	STA. 144+91.7 TO STA 172+45 Kane County Line	2753						
	GRAND TOTAL	4520	245	0.25	0.25	23	23	23



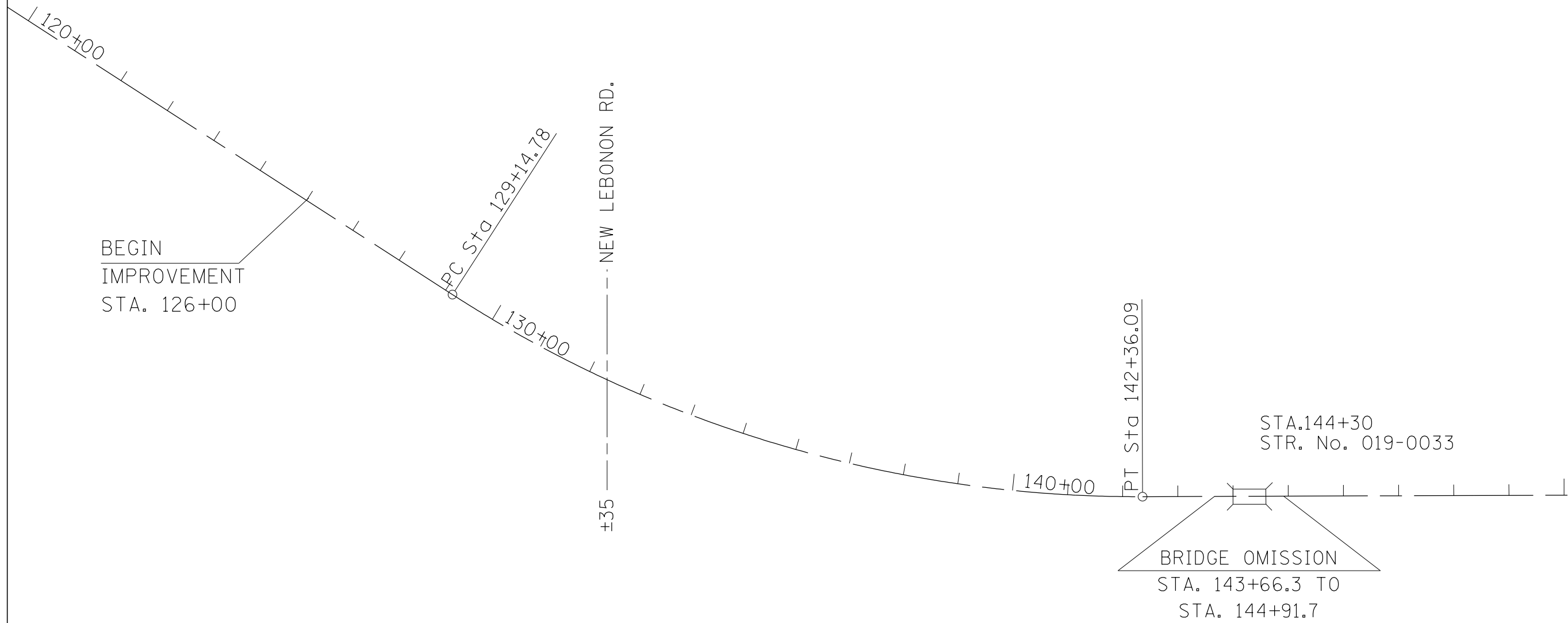
2002013716



2002013716

2002013716

FILE NAME =	USER NAME = ferguson	DESIGNED -	REVISED -	STATE OF ILLINOIS DEPARTMENT OF TRANSPORTATION	SECTION CORNER TIE POINTS	F.A.P. RTE.	SECTION	COUNTY	TOTAL SHEETS	SHEET NO.	
et:\pw\work\p\idot\ferguson\40366351\066037-sht-cover.dgn		DRAWN -	REVISED -			557	(128)RS-5 & 1-2	DEKALB	11	7	
PLOT SCALE = 100.0000' / in.		CHECKED -	REVISED -			CONTRACT NO. 66037					
PLOT DATE = 4/2/2014		DATE -	REVISED -			FED. ROAD DIST. NO. ILLINOIS FED. AID PROJECT					



EXIST. CURVE EXIST-2
 PI STA. = 135+94.37
 Δ = 33° 02' 00" (LT)
 D = 2° 30' 00"
 R = 2,291.80'
 T = 679.59'
 L = 1,321.32'
 E = 98.64'
 e = -----
 T.R. = -----
 S.E. RUN = -----
 P.C. STA. = 129+14.78
 P.T. STA. = 142+36.09

MATCH LINE STA. 150+00

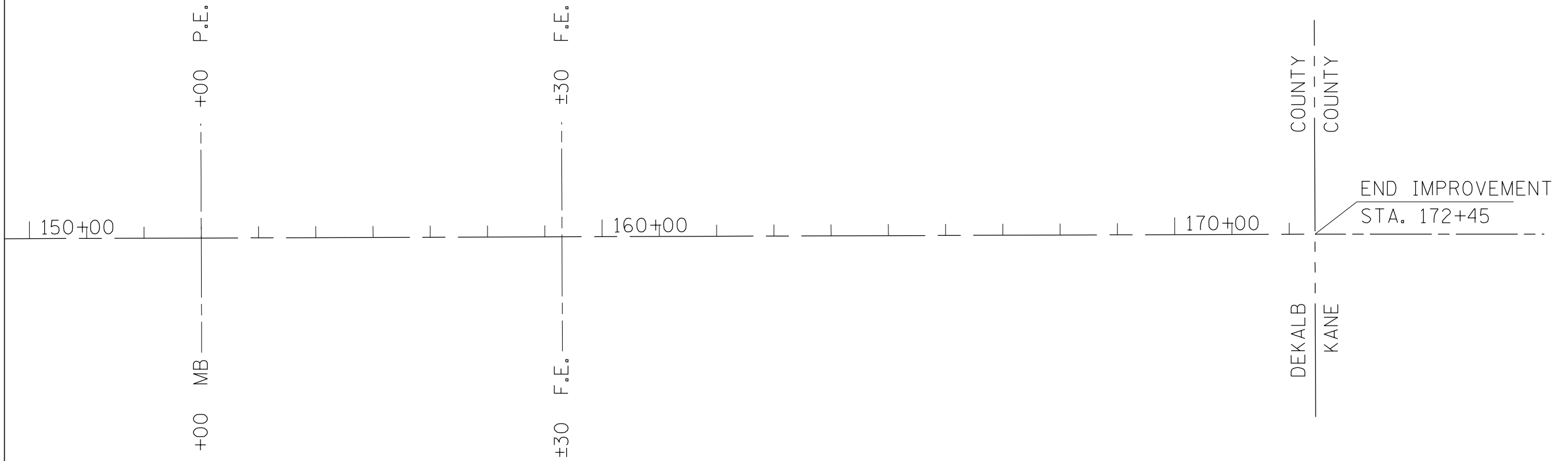
FILE NAME =	USER NAME = fergusonse	DESIGNED -	REVISED -
c:\pwork\pwork\fergusonse\d0366351\0366037-sht-cover.dgn		DRAWN -	REVISED -
	PLOT SCALE = 100.0000' / in.	CHECKED -	REVISED -
MODELNAME	PLOT DATE = 4/2/2014	DATE -	REVISED -

STATE OF ILLINOIS
DEPARTMENT OF TRANSPORTATION

PLAN SHEET			
STA. 120+00 TO STA. 150+00			
SCALE:	SHEET	OF	SHEETS
	STA.	TO	STA.

F.A.P. RTE.	SECTION	COUNTY	TOTAL SHEETS	SHEET NO.
557	(128)RS-5 & I-2	DEKALB	11	8
CONTRACT NO. 66D37			ILLINOIS FED. AID PROJECT	

MATCH LINE STA. 150+00

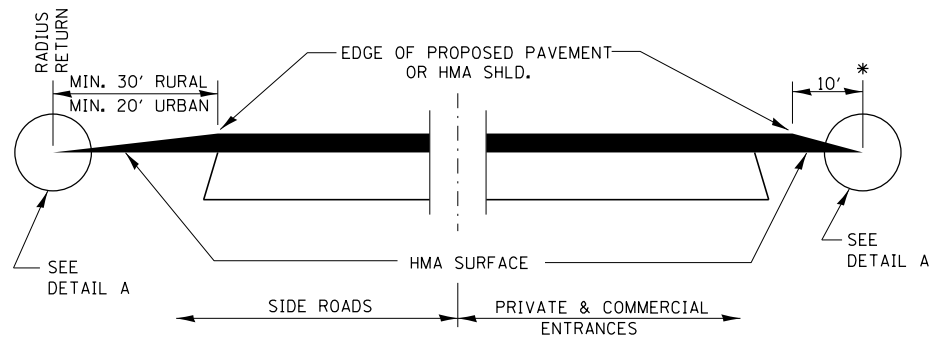


FILE NAME =	USER NAME = ferguson	DESIGNED -	REVISED -
c:\pwork\pwork\ferguson\0366351\0366037-sht-cover.dgn		DRAWN -	REVISED -
\$MODELNAME\$	PLOT SCALE = 100.0000' / 1"	CHECKED -	REVISED -
	PLOT DATE = 4/2/2014	DATE -	REVISED -

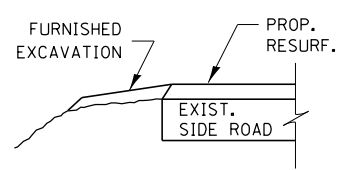
**STATE OF ILLINOIS
DEPARTMENT OF TRANSPORTATION**

PLAN SHEET			
STA. 150 + 00 TO STA. 172 + 45			
SCALE:	SHEET	OF	SHEETS
	STA.	TO	STA.

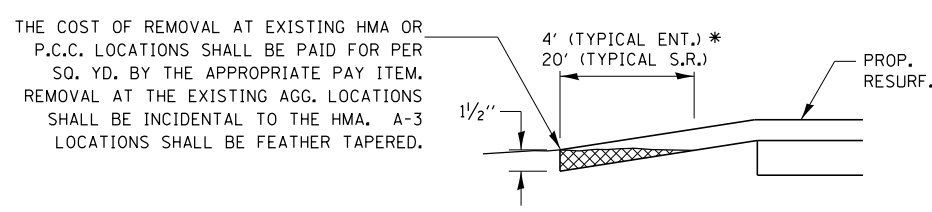
F.A.P. RTE.	SECTION	COUNTY	TOTAL SHEETS	SHEET NO.
557	(128)RS-5 & I-2	DEKALB	11	9
CONTRACT NO. 66D37				
ILLINOIS FED. AID PROJECT				



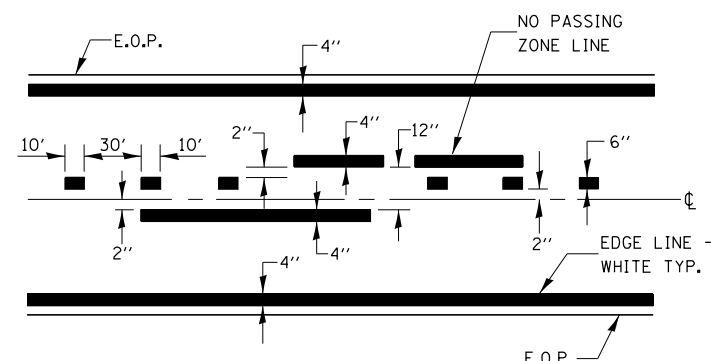
SECTION A-A
DETAILS AT ENTRANCES & SIDE ROADS



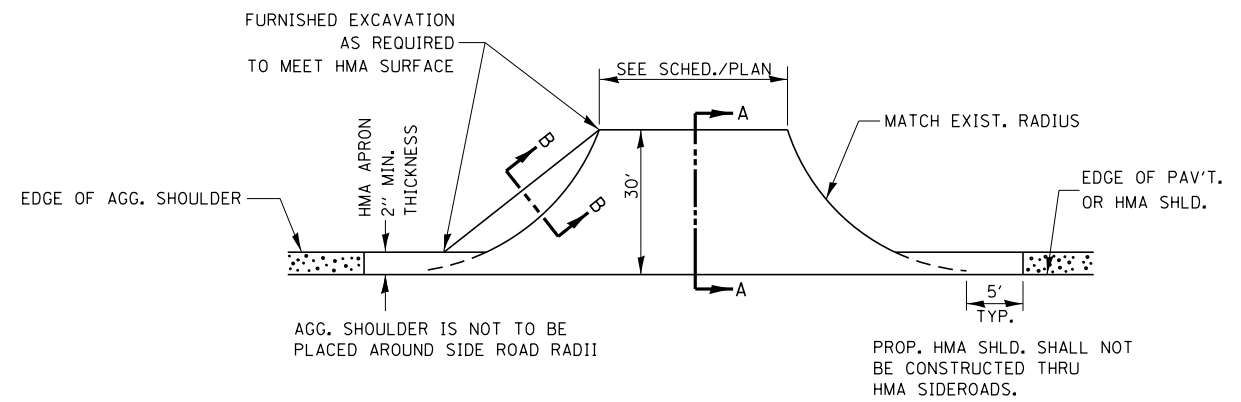
SECTION B-B



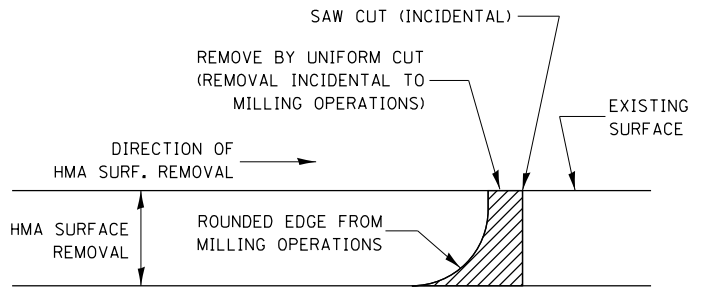
DETAIL A



PAVEMENT MARKING

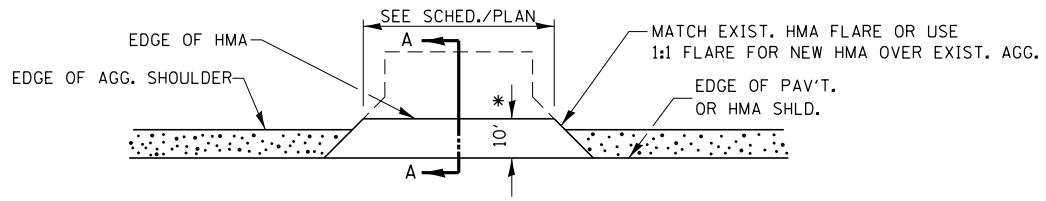


PLAN AT SIDE ROADS



NOTE:
WHEN MILLING OPERATIONS PRODUCE A ROUNDED EDGE, THEN A SAW CUT SHALL BE USED TO MANUFACTURE A PERPENDICULAR EDGE AS SHOWN IN THE DETAIL. THE ENGINEER SHALL BE THE SOLE JUDGE CONCERNING THE USE OF THIS DETAIL

HMA DETAIL AT BUTT JOINTS

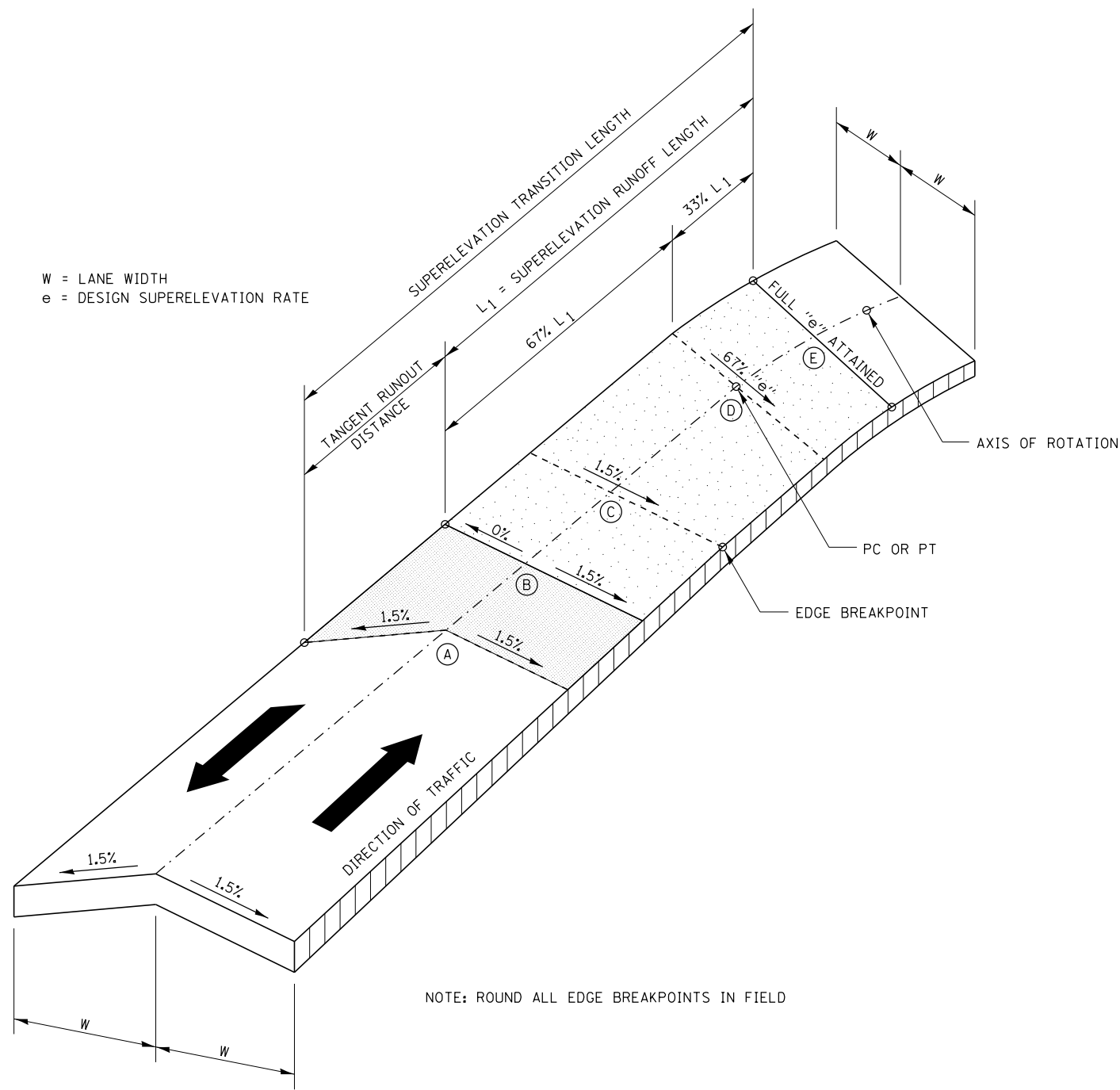


PLAN AT PRIVATE & COMMERCIAL ENTRANCES

(DO NOT RESURFACE FIELD ENTRANCES)

* PROPOSED HMA RESURFACING AT PUBLIC EDUCATIONAL FACILITY ENTRANCES SHALL BE EXTENDED TO THE RIGHT-OF-WAY LIMITS.

FILE NAME =	USER NAME = fergusonse	DESIGNED -	REVISED -	STATE OF ILLINOIS DEPARTMENT OF TRANSPORTATION	DETAILS			F.A.P. RTE.	SECTION	COUNTY	TOTAL SHEETS	SHEET NO.
et:\pw\work\p\idot\fergusonse\d0366351\0366037-sht-cover.dgn		DRAWN -	REVISED -					557	(128)RS-5 & I-2	DEKALB	11	10
PLOT SCALE = 100.0000' / 1in.		CHECKED -	REVISED -					CONTRACT NO. 66D37				
PLOT DATE = 4/2/2014		DATE -	REVISED -					ILLINOIS FED. AID PROJECT				
				SCALE:	SHEET NO.	OF	SHEETS	STA.	TO STA.			



W = LANE WIDTH
e = DESIGN SUPERELEVATION RATE

NOTE: ROUND ALL EDGE BREAKPOINTS IN FIELD

TRANSITION CURVE TABLE

CURVE PI STA.	SUPERELEVATION "e"	w	SUPERELEVATION RUNOFF LENGTH	TANGENT RUNOUT DISTANCE	SUPERELEVATION TRANSITION LENGTH
STA. 135+94.37	5.2%	12.0 FT	139.0 FT	40.1 FT	179.1 FT

SUPERELEVATION TRANSITION ON TWO-LANE HIGHWAY