

F.A.I. RTE.	SECTION	COUNTY	TOTAL SHEETS	SHEET NO.
55	D3 PATCHING 2015-3	GRUNDY	13	1
		ILLINOIS	CONTRACT NO. 66D77	

STATE OF ILLINOIS
DEPARTMENT OF TRANSPORTATION

DIVISION OF HIGHWAYS

**PROPOSED
HIGHWAY PLANS**

FAI ROUTE 55 (I-55)
SECTION D3 PATCHING 2015-3

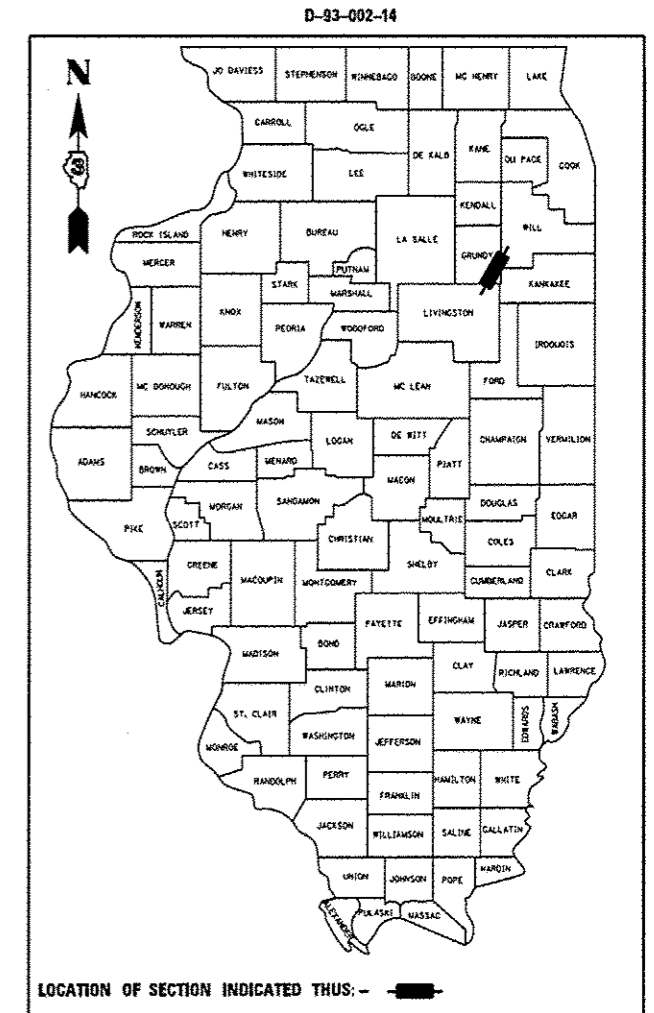
PAVEMENT PATCHING
GRUNDY COUNTY
C-93-100-14

INDEX OF SHEETS

1. COVER SHEET
2. GENERAL NOTES
- 3-4. SUMMARY OF QUANTITIES
5. TYPICAL SECTIONS
- 6-9. SCHEDULES
10. TRAFFIC CONTROL AND PROTECTION, STANDARD 701400 (SPECIAL)
- 11-12. CLASS A PATCHES
13. TYPICAL PAVEMENT MARKINGS

HIGHWAY STANDARDS

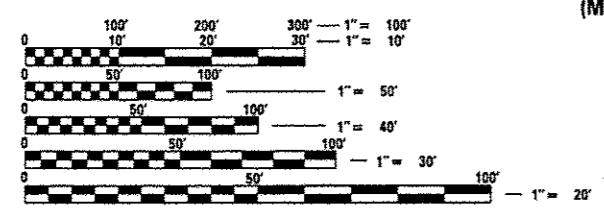
- 000001-06 STANDARD SYMBOLS, ABBREVIATIONS AND PATTERNS
- 001001-02 AREAS OF REINFORCEMENT BARS
- 001006 DECIMAL OF AN INCH AND OF A FOOT
- 420701-02 PAVEMENT FABRIC
- 421001-02 BAR REINFORCEMENT FOR CRC PAVEMENT
- 701101-04 OFF-ROAD OPERATIONS MULTILANE, 15' (4.5 m) TO 24' (600 mm) FROM PAVEMENT EDGE
- 701401-08 LANE CLOSURE, FREEWAY/EXPRESSWAY
- 701411-08 LANE CLOSURE, MULTILANE, AT ENTRANCE OR EXIT RAMP FOR SPEEDS ≥ 45 MPH
- 701426-06 LANE CLOSURE, MULTILANE INTERMITTENT OR MOVING OPERATION, FOR SPEEDS ≥ 45 MPH
- 701428 TRAFFIC CONTROL SETUP AND REMOVAL FREEWAY/EXPRESSWAY
- 701901-03 TRAFFIC CONTROL DEVICES
- 701400-07



RURAL	
INTERSTATE	
FAI 55 (I-55)	
2013	
ADT	20600
P.V.	69.75%
S.U.	7.25%
M.U.	23.00%

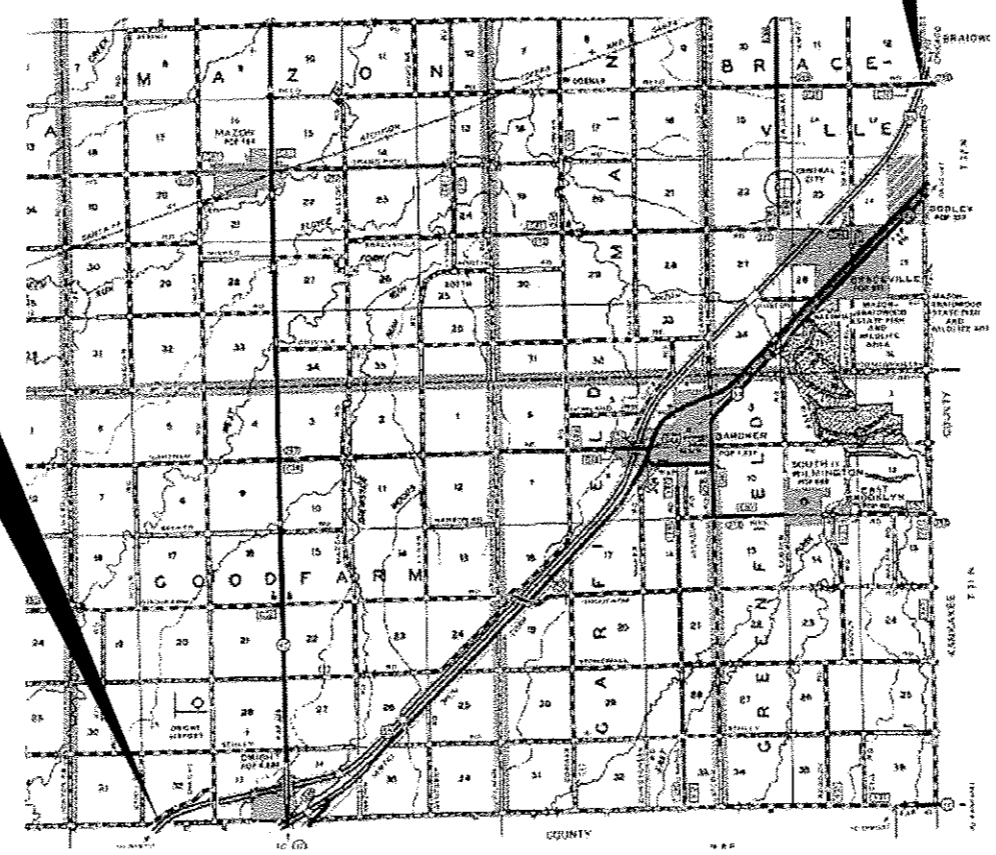
PROJECT BEGINS
LIVINGSTON COUNTY LINE
(M.P. 218.07)

PROJECT ENDS
WILL COUNTY LINE
(M.P. 233.49)



FULL SIZE PLANS HAVE BEEN PREPARED USING STANDARD ENGINEERING SCALES. REDUCED SIZED PLANS WILL NOT CONFORM TO STANDARD SCALES. IN MAKING MEASUREMENTS ON REDUCED PLANS, THE ABOVE SCALES MAY BE USED.

J.U.L.I.E.
JOINT UTILITY LOCATION INFORMATION FOR EXCAVATION
1-800-892-0123
OR 811



LOCATION MAP
NOT TO SCALE

GROSS LENGTH = 81417.60 FT. = 15.420 MILE
NET LENGTH = 724.00 FT. = 0.137 MILE

PROJECT ENGINEER: JOSEPH KANNEL, P.E.
UNIT CHIEF: RON WOODSHANK
TOWNSHIP: VARIOUS

CONTRACT NO. 66D77

STATE OF ILLINOIS
DEPARTMENT OF TRANSPORTATION
DIVISION OF HIGHWAYS

SUBMITTED *April 3 2014*
Paul Lister, P.E.
DEPUTY DIRECTOR OF HIGHWAYS, REGION ENGINEER

May 9 2014
John D. Baranzelle, P.E.
ENGINEER OF DESIGN AND ENVIRONMENT

May 9 2014
Omer Osman, P.E.
DIRECTOR OF HIGHWAYS, CHIEF ENGINEER

**PRINTED BY THE AUTHORITY
OF THE STATE OF ILLINOIS**