

STATE OF ILLINOIS  
DEPARTMENT OF TRANSPORTATION  
DIVISION OF HIGHWAYS

**PROPOSED  
HIGHWAY PLANS**

FAP ROUTE 68 (IL 23)  
INTMT SPRING RD REPAIR 2014-3

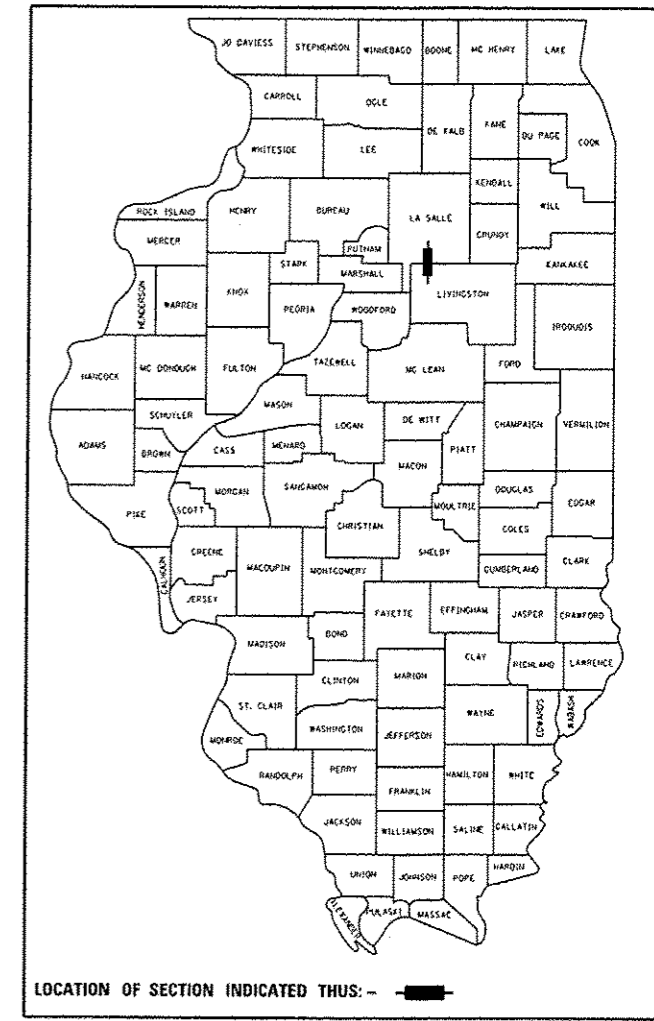
**MILLING & RESURFACING  
LASALLE & LIVINGSTON COUNTIES**

C-93-117-14

F.A.P. RTE.	SECTION	COUNTY	TOTAL SHEETS	SHEET NO.
68		**	10	1

\*INTERMITTENT SPRING ROAD REPAIR 2014-3  
\*\*LASALLE & LIVINGSTON

D-93-066-14



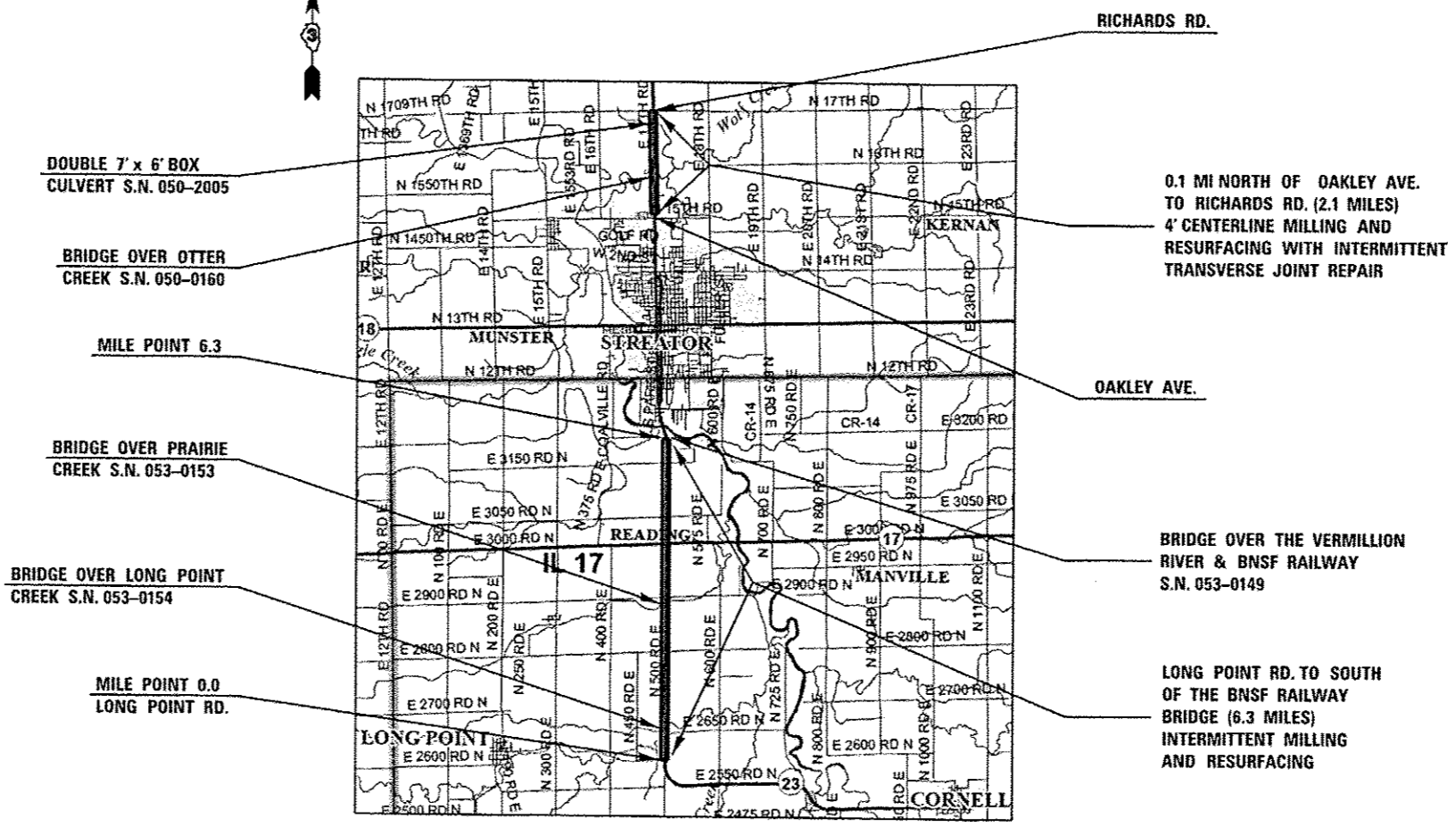
LOCATION OF SECTION INDICATED THUS: -

INDEX OF SHEETS

- 1 COVER SHEET
- 2 GENERAL NOTES
- 3 SUMMARY OF QUANTITIES
- 4-5 TYPICAL SECTIONS
- 6-9 SCHEDULE OF QUANTITIES
- 10 DETAILS

STANDARDS

- 000001-06 STANDARD SYMBOLS, ABBREVIATIONS AND PATTERNS
- 001008 DECIMAL OF AN INCH AND OF A FOOT
- 701001-02 OFF-ROAD OPERATIONS 2L, 2W, MORE THAN 15' (4.5 m) AWAY
- 701006-05 OFF-ROAD OPERATIONS 2L, 2W, 15' (4.5 m) TO 24" (600 mm) FROM PAVEMENT EDGE
- 701308-03 LANE CLOSURE, 2L, 2W, SLOW MOVING OPERATIONS DAY ONLY, FOR SPEEDS ≥ 45 MPH
- 701311-03 LANE CLOSURE, 2L, 2W, MOVING OPERATIONS - DAY ONLY
- 701421-06 LANE CLOSURE, MULTILANE, DAY OPERATIONS ONLY, FOR SPEEDS ≥ 45 MPH TO 55 MPH
- 701901-03 TRAFFIC CONTROL DEVICES
- 780001-04 TYPICAL PAVEMENT MARKINGS



DOUBLE 7' x 6' BOX  
CULVERT S.N. 050-2005

BRIDGE OVER OTTER  
CREEK S.N. 050-0160

MILE POINT 6.3

BRIDGE OVER PRAIRIE  
CREEK S.N. 053-0153

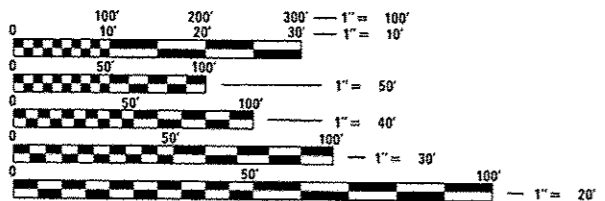
BRIDGE OVER LONG POINT  
CREEK S.N. 053-0154

MILE POINT 0.0  
LONG POINT RD.

0.1 MI NORTH OF OAKLEY AVE.  
TO RICHARDS RD. (2.1 MILES)  
4' CENTERLINE MILLING AND  
RESURFACING WITH INTERMITTENT  
TRANSVERSE JOINT REPAIR

BRIDGE OVER THE VERMILLION  
RIVER & BNSF RAILWAY  
S.N. 053-0149

LONG POINT RD. TO SOUTH  
OF THE BNSF RAILWAY  
BRIDGE (6.3 MILES)  
INTERMITTENT MILLING  
AND RESURFACING



FULL SIZE PLANS HAVE BEEN PREPARED USING STANDARD ENGINEERING SCALES. REDUCED SIZED PLANS WILL NOT CONFORM TO STANDARD SCALES. IN MAKING MEASUREMENTS ON REDUCED PLANS, THE ABOVE SCALES MAY BE USED.

J.U.L.I.E.  
JOINT UTILITY LOCATION INFORMATION FOR EXCAVATION  
1-800-892-0123  
OR 811

PROJECT ENGINEER: JOE KANNEL, P.E.  
UNIT CHIEF: DUANE LUKKARI  
DISTRICT 3 NO. (815) 434-6131  
CONTRACT NO. 66D88

GROSS LENGTH = 44,352 FT. = 8.40 MILES  
NET LENGTH = 19,760 FT. = 3.74 MILES

RURAL MINOR ARTERIALS

NORTH SECTION	SOUTH SECTION
2013 ADT = 8250	2013 ADT = 3950
P.V. = 90.6%	P.V. = 88.2%
S.U. = 5.2%	S.U. = 8.2%
M.U. = 4.2%	M.U. = 3.6%

STATE OF ILLINOIS  
DEPARTMENT OF TRANSPORTATION  
DIVISION OF HIGHWAYS

SUBMITTED April 11 2014  
Paul Coetzee, P.E.  
DEPUTY DIRECTOR OF HIGHWAYS, REGION ENGINEER

John D. Baranzelli, P.E.  
ENGINEER OF DESIGN AND ENVIRONMENT

May 9 2014  
Omer Osman, P.E.  
DIRECTOR OF HIGHWAYS, CHIEF ENGINEER

PRINTED BY THE AUTHORITY  
OF THE STATE OF ILLINOIS