

STATE OF ILLINOIS
DEPARTMENT OF TRANSPORTATION
DIVISION OF HIGHWAYS

**PROPOSED
HIGHWAY PLANS**

FAP ROUTE 68 (IL 23)
INTMT SPRING RD REPAIR 2014-3

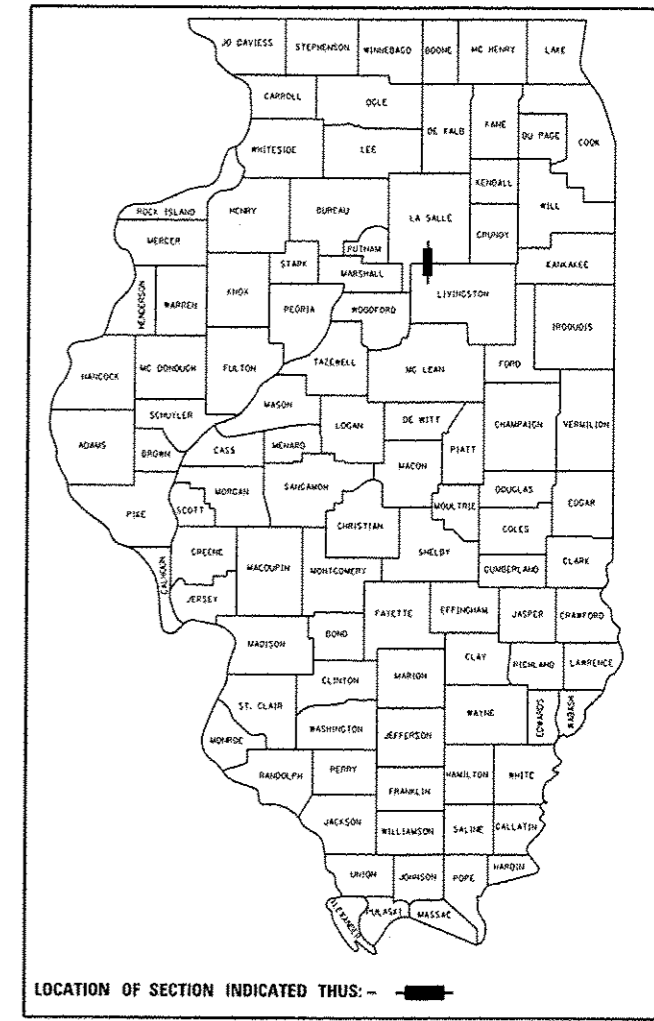
**MILLING & RESURFACING
LASALLE & LIVINGSTON COUNTIES**

C-93-117-14

F.A.P. RTE.	SECTION	COUNTY	TOTAL SHEETS	SHEET NO.
68		**	10	1

*INTERMITTENT SPRING ROAD REPAIR 2014-3
**LASALLE & LIVINGSTON

D-93-066-14



LOCATION OF SECTION INDICATED THUS: -

RURAL MINOR ARTERIALS

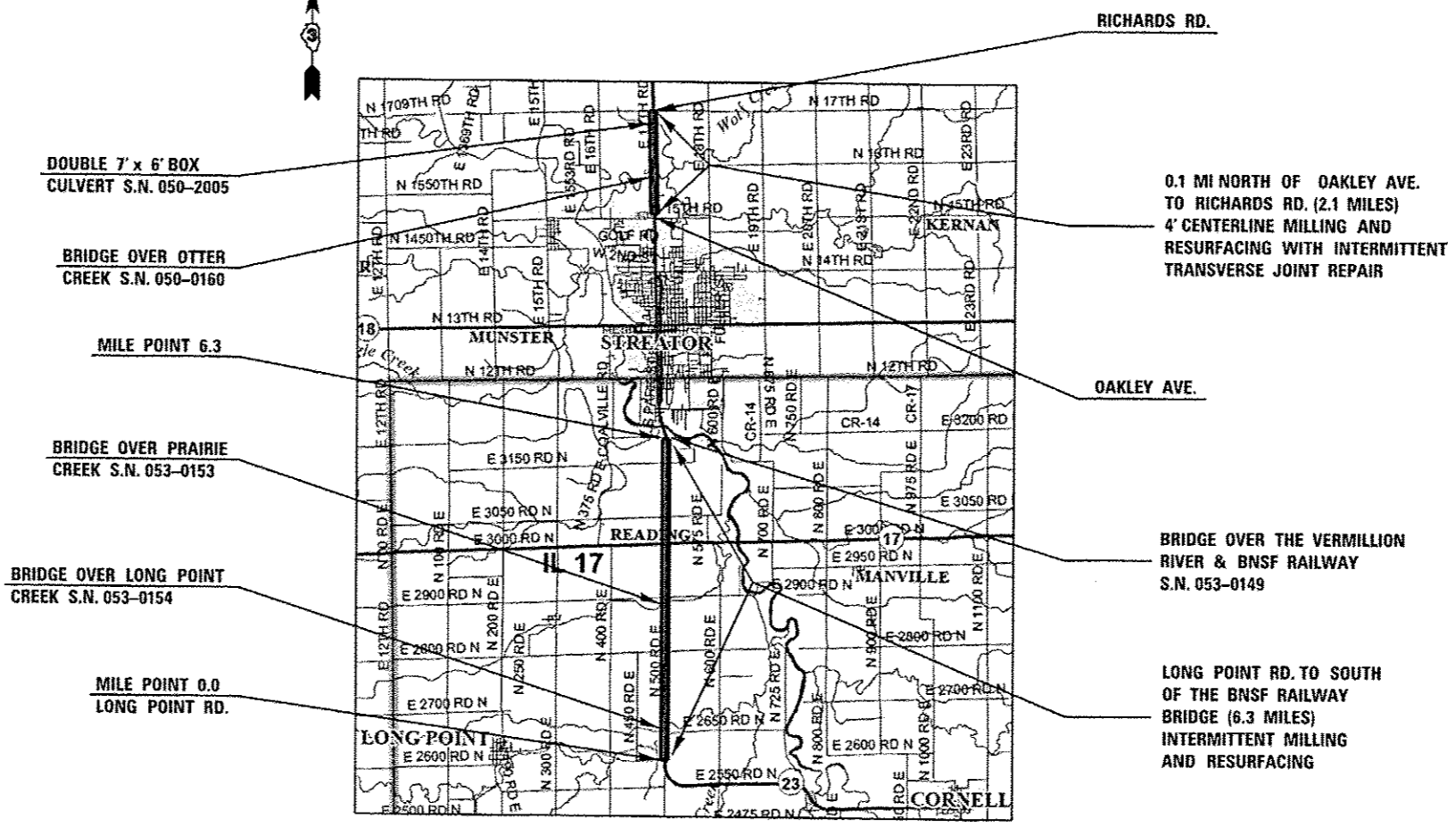
NORTH SECTION	SOUTH SECTION
2013 ADT = 8250	2013 ADT = 3950
P.V. = 90.6%	P.V. = 88.2%
S.U. = 5.2%	S.U. = 8.2%
M.U. = 4.2%	M.U. = 3.6%

INDEX OF SHEETS

- 1 COVER SHEET
- 2 GENERAL NOTES
- 3 SUMMARY OF QUANTITIES
- 4-5 TYPICAL SECTIONS
- 6-9 SCHEDULE OF QUANTITIES
- 10 DETAILS

STANDARDS

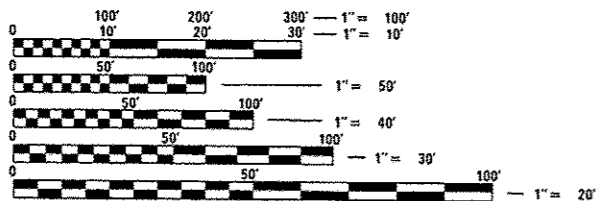
- 000001-06 STANDARD SYMBOLS, ABBREVIATIONS AND PATTERNS
- 001008 DECIMAL OF AN INCH AND OF A FOOT
- 701001-02 OFF-ROAD OPERATIONS 2L, 2W, MORE THAN 15' (4.5 m) AWAY
- 701006-05 OFF-ROAD OPERATIONS 2L, 2W, 15' (4.5 m) TO 24" (600 mm) FROM PAVEMENT EDGE
- 701308-03 LANE CLOSURE, 2L, 2W, SLOW MOVING OPERATIONS DAY ONLY, FOR SPEEDS ≥ 45 MPH
- 701311-03 LANE CLOSURE, 2L, 2W, MOVING OPERATIONS - DAY ONLY
- 701421-06 LANE CLOSURE, MULTILANE, DAY OPERATIONS ONLY, FOR SPEEDS ≥ 45 MPH TO 55 MPH
- 701901-03 TRAFFIC CONTROL DEVICES
- 780001-04 TYPICAL PAVEMENT MARKINGS



0.1 MI NORTH OF OAKLEY AVE. TO RICHARDS RD. (2.1 MILES)
4' CENTERLINE MILLING AND RESURFACING WITH INTERMITTENT TRANSVERSE JOINT REPAIR

BRIDGE OVER THE VERMILLION RIVER & BNSF RAILWAY S.N. 053-0149

LONG POINT RD. TO SOUTH OF THE BNSF RAILWAY BRIDGE (6.3 MILES) INTERMITTENT MILLING AND RESURFACING



FULL SIZE PLANS HAVE BEEN PREPARED USING STANDARD ENGINEERING SCALES. REDUCED SIZED PLANS WILL NOT CONFORM TO STANDARD SCALES. IN MAKING MEASUREMENTS ON REDUCED PLANS, THE ABOVE SCALES MAY BE USED.

J.U.L.I.E.
JOINT UTILITY LOCATION INFORMATION FOR EXCAVATION
1-800-892-0123
OR 811

PROJECT ENGINEER: JOE KANNEL, P.E.
UNIT CHIEF: DUANE LUKKARI
DISTRICT 3 NO. (815) 434-6131
CONTRACT NO. 66D88

GROSS LENGTH = 44,352 FT. = 8.40 MILES
NET LENGTH = 19,760 FT. = 3.74 MILES

STATE OF ILLINOIS
DEPARTMENT OF TRANSPORTATION
DIVISION OF HIGHWAYS

SUBMITTED April 11 2014
Paul Coetzee, P.E.
DEPUTY DIRECTOR OF HIGHWAYS, REGION ENGINEER

May 9 2014
John D. Baranzelli, P.E.
ENGINEER OF DESIGN AND ENVIRONMENT

May 9 2014
Omer Osman, P.E.
DIRECTOR OF HIGHWAYS, CHIEF ENGINEER

**PRINTED BY THE AUTHORITY
OF THE STATE OF ILLINOIS**

GENERAL NOTES

THE THICKNESS OF HMA SHOWN ON THE PLANS IS THE NOMINAL THICKNESS. DEVIATIONS FROM THE NOMINAL THICKNESS WILL BE PERMITTED WHEN SUCH DEVIATIONS OCCUR DUE TO IRREGULARITIES IN THE EXISTING SURFACE OR BASE ON WHICH THE HMA IS PLACED.

THE ENGINEER WILL BE THE SOLE JUDGE CONCERNING CURING TIME FOR THE VARIOUS HMA LIFTS.

FOR STABILIZATION, ALL TYPE III BARRICADES WILL REQUIRE A MINIMUM OF FOUR SAND BAGS PER BARRICADE.

ALL EXCAVATED MATERIAL, WHICH INCLUDES DIGGING OR GRADING OF ANY SOIL OR FILL MATERIAL, WITH THE EXCEPTION OF AGGREGATE FILLS, MUST BE INCORPORATED WITHIN THE IDOT RIGHT OF WAY DUE TO ENVIRONMENTAL DOCUMENTATION REQUIREMENTS.

ON EXISTING PAVEMENT WHICH MAY BE SUPERELEVATED, THE NEW HMA PAVEMENT SHALL BE BUILT WITH THE SAME SUPERELEVATION UNLESS NEW SUPERELEVATION RATES ARE GIVEN ON THE PLANS.

ALL ELEVATIONS REFERRING TO U.S.G.S. MEAN SEA LEVEL DATUM.

ANY REFERENCE TO A STANDARD IN THESE PLANS SHALL BE INTERPRETED TO MEAN THE EDITION AS INDICATED BY THE SUBNUMBER SHOWN IN THE LIST OF STANDARDS OR THE COPY INCLUDED IN THESE PLANS.

THE FOLLOWING RATES OF APPLICATION HAVE BEEN USED IN CALCULATING PLAN QUANTITIES:

GRANULAR MATERIALS	2.05	TONS / CU YD
HMA RESURFACING	112	LBS / SQ YD / IN
SHORT TERM PAVEMENT MARKING	10	FT / 100 FT OF APPLICATION
MIX FOR CRACKS, JTS & FLGWYS	0.0003	TONS / SQ YD
LEVEL BINDER (HAND METHOD)	0.0005	TONS / SQ YD
SUPPLEMENTAL WATERING	3	GAL / SQ YD / APPLICATION
CALCIUM CHLORIDE	2	LB / SQ YD / APPLICATION
AGGREGATE DITCH CHECKS	5	TONS AGGREGATE

COMMITMENTS:

ENVIRONMENTAL COORDINATION

STATE OF ILLINOIS
DEPARTMENT OF TRANSPORTATION
DISTRICT THREE

PREPARED BY: Tom Beonil
DISTRICT STUDIES & PLANS ENGINEER

DATE: 4-11-14

EXAMINED BY: Harold Perry
DISTRICT CONSTRUCTION ENGINEER

Jim Phillips
DISTRICT MATERIALS ENGINEER

Bruce A. Hecker
DISTRICT OPERATIONS ENGINEER

*INTERMITTENT SPRING ROAD REPAIR 2014-3
**LASALLE & LIVINGSTON

FILE NAME *	USER NAME * Schwankerg	DESIGNED -	REVISED -	STATE OF ILLINOIS DEPARTMENT OF TRANSPORTATION	GENERAL NOTES	F.A.P. RTE.	SECTION	COUNTY	TOTAL SHEETS	SHEET NO.
c:\pwork\psidot\schwankerg\d0380088\086088-shr-cover.dgn	DRAWN -	REVISED -	68			*	**	10	2	
PLOT SCALE * 100.0000' / in.	CHECKED -	REVISED -	CONTRACT NO. 66088							
PLOT DATE * 4/11/2014	DATE -	REVISED -	ILLINOIS FED. AID PROJECT							
					SCALE:	SHEET NO. 1 OF 1 SHEETS		STA.	TO STA.	

CODE NO.	ITEM	UNIT	TOTAL QUANTITY	CONSTRUCTION CODE			
				LASALLE	LASALLE	LIVINGSTON	LIVINGSTON
				ROADWAY	ROADWAY	ROADWAY	ROADWAY
				0005 RURAL	0005 URBAN	0005 RURAL	0005 URBAN
40600400	MIXTURE FOR CRACKS, JOINTS, AND FLANGWAYS	TON	4.7	1.0	0.9	2.0	0.8
40600525	LEVELING BINDER (HAND METHOD), N50	TON	7.7	1.7	1.5	3.2	1.3
40603335	HOT-MIX ASPHALT SURFACE COURSE, MIX "D", N50	TON	1734	378	342	723	291
44000157	HOT-MIX ASPHALT SURFACE REMOVAL, 2"	SO YD	15475	3371	3051	6453	2600
67100100	MOBILIZATION	L SUM	1.00	0.25	0.25	0.25	0.25
70100310	TRAFFIC CONTROL AND PROTECTION, STANDARD T01421	L SUM	1.0	0.5	0.5	0.0	0.0
70100460	TRAFFIC CONTROL AND PROTECTION, STANDARD T01306	L SUM	1.0	0.0	0.0	0.5	0.5
70300100	SHORT TERM PAVEMENT MARKING	FOOT	878	176	164	358	180
70301000	WORK ZONE PAVEMENT MARKING REMOVAL	SO FT	293	59	55	119	60
* 78001110	PAINT PAVEMENT MARKING - LINE 4"	FOOT	21782	1056	576	12950	7200
* 78001130	PAINT PAVEMENT MARKING - LINE 6"	FOOT	8688	3000	3000	1788	900
78300200	RAISED REFLECTIVE PAVEMENT MARKER REMOVAL	EACH	220	75	75	48	22
X4060110	BITUMINOUS MATERIALS (PRIME COAT)	POUND	6964	1517	1373	2904	1170

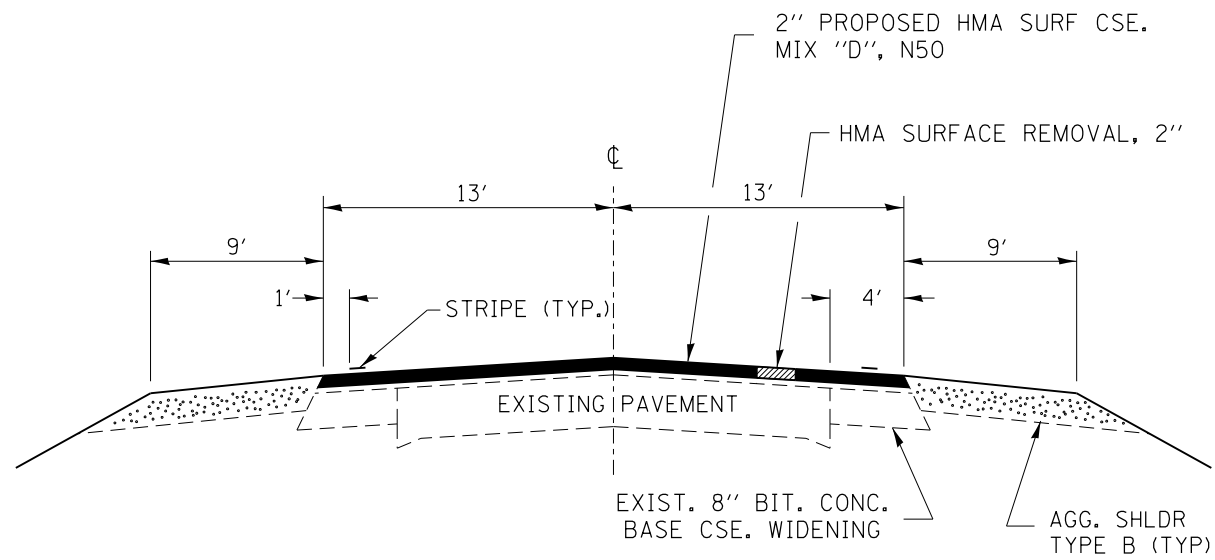
100%
STATE

13

*Specialty Items

*INTERMITTENT SPRING ROAD REPAIR 2014-3
**LASALLE & LIVINGSTON

FILE NAME =	USER NAME = budzynskim	DESIGNED -	REVISED -	STATE OF ILLINOIS DEPARTMENT OF TRANSPORTATION	SUMMARY OF QUANTITIES			F.A.P. RTE.	SECTION	COUNTY	TOTAL SHEETS	SHEET NO.
c:\pwwork\p1dot\budzynskim\0308005\066088-akt-SDD.dgn	DRAWN -	REVISED -	68					-	**	10	3	
PLOT SCALE = 100.0000' / 1"	CHECKED -	REVISED -	CONTRACT NO. 66088									
PLOT DATE = 4/11/2014	DATE -	REVISED -	SCALE:		SHEET NO. 1 OF 1 SHEETS	STA.	TO STA.	ILLINOIS FED. AID PROJECT				



MIXTURES TABLE	
	HMA SURFACE COURSE
PG GRADE	PG64-22
DESIGN AIR VOIDS	4.0% @ N50
MIXTURE COMPOSITION	IL 9.5
FRICTION AGGREGATE	MIXTURE D
DENSITY TEST METHOD	CORES

TYPICAL SECTION NO. 1

LT SIDE (SB LANE)

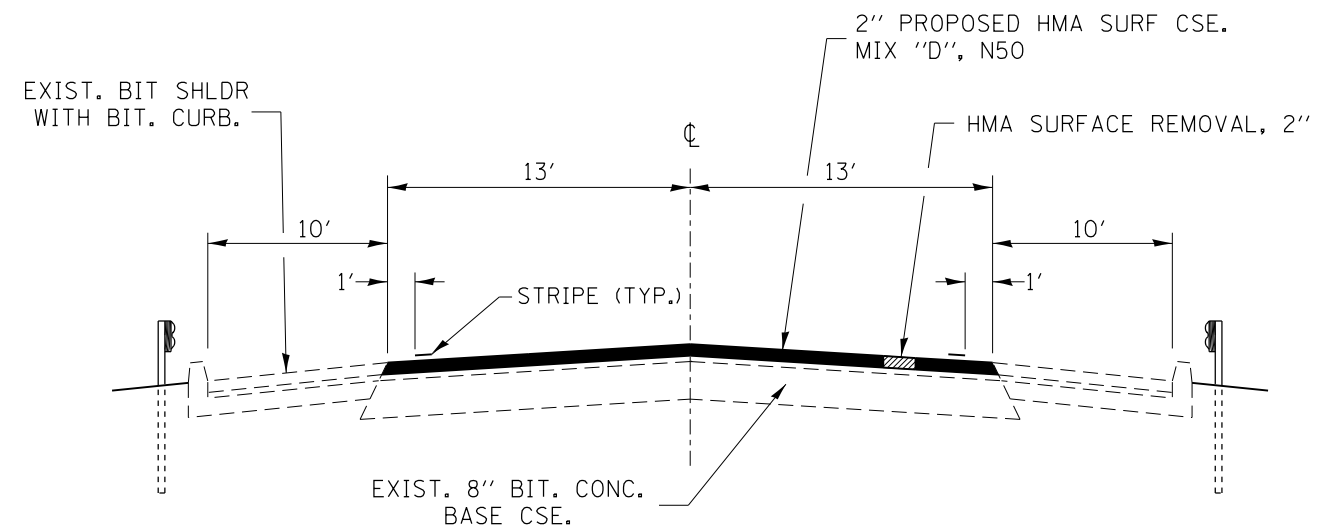
- LM 0.4 TO 0.5
- LM 1.6
- LM 1.7 TO 1.8
- LM 2.1 TO 2.2
- LM 2.7 TO 2.8
- LM 3.4
- LM 3.9 TO 4.0
- LM 4.4 TO 4.6

RT SIDE (NB LANE)

- LM 0.0
- LM 0.5 TO 0.6
- LM 2.1 TO 2.3*
- LM 2.8
- LM 3.3 TO 3.9*
- LM 3.9 TO 4.0
- LM 4.5 TO 4.6
- LM 4.7 TO 4.8
- LM 5.4

*MILL 4' WIDTH AT EOP

NOTE: HMA SURFACE REMOVAL MILLINGS TO BE USED AT LOW SHOULDER LOCATIONS

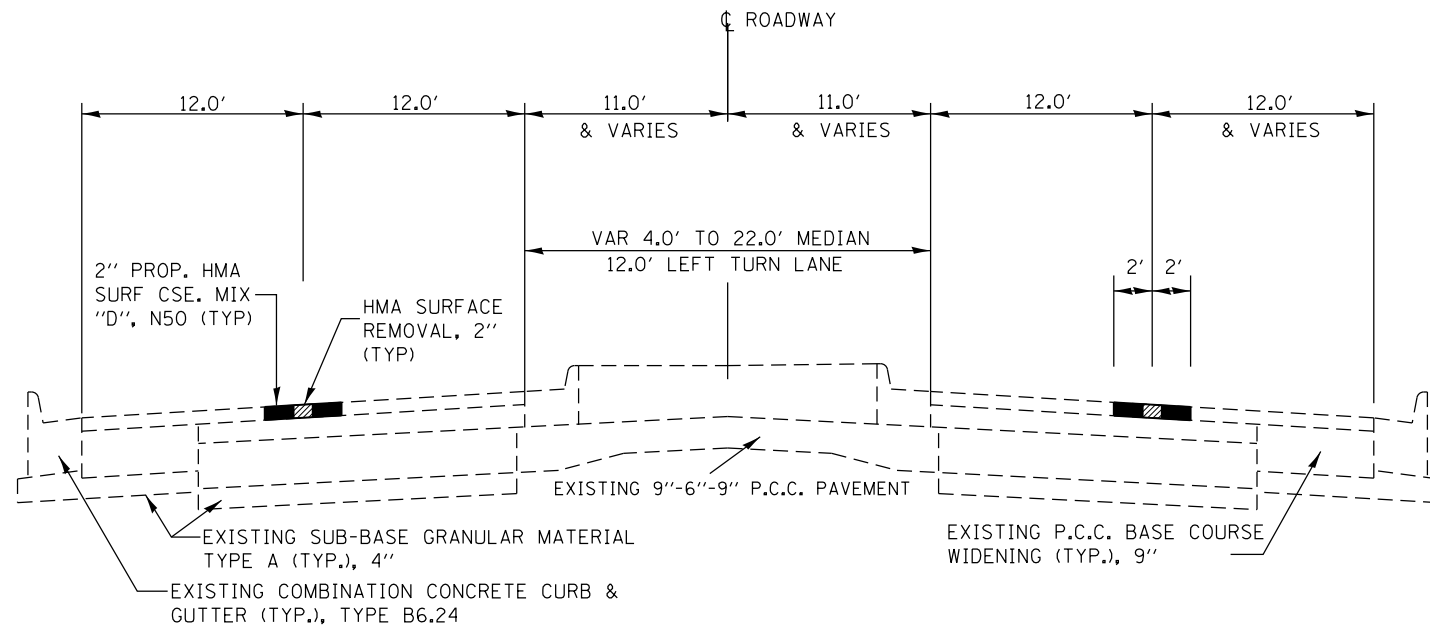


TYPICAL SECTION NO. 2

LM 6.0 TO 6.3 LT & RT

•INTERMITTENT SPRING ROAD REPAIR 2014-3
••LASALLE & LIVINGSTON

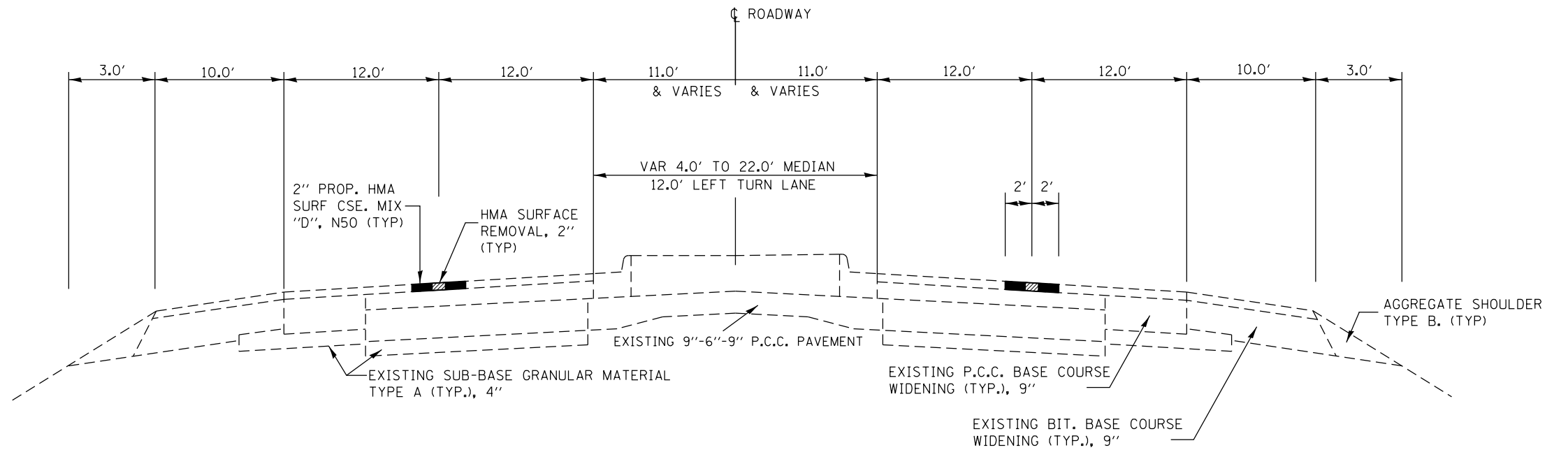
FILE NAME =	USER NAME = budzynskim	DESIGNED -	REVISED -	STATE OF ILLINOIS DEPARTMENT OF TRANSPORTATION	TYPICAL SECTIONS - LIVINGSTON COUNTY	F.A.P. RTE.	SECTION	COUNTY	TOTAL SHEETS	SHEET NO.
et:\pw\work\p\dot\budzynskim\d0388006\0666088-sh-typical.dgn		DRAWN -	REVISED -			68	.	••	10	4
PLOT SCALE = 100.0000' / in.		CHECKED -	REVISED -			CONTRACT NO. 66088				
PLOT DATE = 4/11/2014		DATE -	REVISED -			ILLINOIS FED. AID PROJECT				
						SCALE:	SHEET NO. 1 OF 2 SHEETS	STA.	TO STA.	



NOTE: INTERMITTENT TRANSVERSE JOINT CRACK REPAIRS WILL BE MADE AT 34 LOCATIONS IN THE NB LANES AND 34 LOCATIONS IN THE SB LANES. LOCATIONS WILL BE DETERMINED BY THE ENGINEER IN THE FIELD.

TYPICAL SECTION NO. 3

OAKLEY AVE. TO BRIDGE OVER OTTER CREEK



TYPICAL SECTION NO. 4

BRIDGE OVER OTTER CREEK TO RICHARDS RD.

FILE NAME =	USER NAME = budzynskim	DESIGNED -	REVISED -
et:\pw\work\p\dot\budzynskim\d0388006\066088-sh-typical.dgn		DRAWN -	REVISED -
	PLOT SCALE = 100.0000' / in.	CHECKED -	REVISED -
	PLOT DATE = 4/11/2014	DATE -	REVISED -

STATE OF ILLINOIS
DEPARTMENT OF TRANSPORTATION

TYPICAL SECTIONS - LASALLE COUNTY	
SCALE:	SHEET NO. 2 OF 2 SHEETS STA. TO STA.

•INTERMITTENT SPRING ROAD REPAIR 2014-3 •LASALLE & LIVINGSTON				
F.A.P. RTE.	SECTION	COUNTY	TOTAL SHEETS	SHEET NO.
68	.	**	10	5
CONTRACT NO. 66D88				
ILLINOIS FED. AID PROJECT				

RESURFACING SCHEDULE								
LOCATION	LENGTH	WIDTH	AREA	HMA SC "D" N50 2"	BIT MATLS PR CT	MIX CR JTS FLANGEWYS	LEV BIND HM N50	HMA SURF REM 2" **
	FT	FT	SQ YD	TON	POUND	TON	TON	SQ YD
OAKLEY AVE. TO RICHARDS RD. (LASALLE COUNTY)								
URBAN								
NORTHBOUND LANES								
CENTERLINE MILL AND RESURFACE	2500.0	4	1111.1	124.4	500.0	0.3	0.6	1111.1
TRANSVERSE 6' JOINT REPAIR AT 12 LOCATIONS*		24	192.0	21.5	86.4	0.06	0.1	192.0
SOUTHBOUND LANES								
CENTERLINE MILL AND RESURFACE	3500.0	4	1555.6	174.2	700.0	0.5	0.8	1555.6
TRANSVERSE 6' JOINT REPAIR AT 12 LOCATIONS*		24	192.0	21.5	86.4	0.06	0.1	192.0
URBAN SUBTOTAL			3051	342	1373	0.9	1.5	3051
RURAL								
NORTHBOUND LANES								
CENTERLINE MILL AND RESURFACE	2500.0	4	1111.1	124.4	500.0	0.3	0.6	1111.1
TRANSVERSE 6' JOINT REPAIR AT 22 LOCATIONS*		24	352.0	39.4	158.4	0.11	0.2	352.0
SOUTHBOUND LANES								
CENTERLINE MILL AND RESURFACE	3500.0	4	1555.6	174.2	700.0	0.5	0.8	1555.6
TRANSVERSE 6' JOINT REPAIR AT 22 LOCATIONS*		24	352.0	39.4	158.4	0.11	0.2	352.0
RURAL SUBTOTAL			3371	378	1517	1.0	1.7	3371
LASALLE COUNTY SUBTOTAL			6421	719	2890	1.9	3.2	6421

*LOCATIONS TO BE DETERMINED IN THE FIELD BY THE ENGINEER
 ** NO HMA SURFACE REMOVAL MILLINGS TO BE USED AS AGGREGATE SHOULDER IN AREA FROM OAKLEY AVENUE TO RICHARDS ROAD.

RESURFACING SCHEDULE										
LOCATION				HMA SC	BIT	MIX CR JTS	LEV BIND	HMA SURF		
	LENGTH	WIDTH	AREA	"D" N50	MATLS	FLANGEWYS	HM N50	REM		
	FT	FT	SQ YD	TON	POUND	TON	TON	2" **		
								SQ YD		
LONG POINT RD. TO BNSF RAILWAY BRIDGE (LIVINGSTON COUNTY)										
RURAL										
NORTHBOUND LANE										
LM	TO	LM								
0.0			150.0	13	216.7	24.3	97.5	0.07	0.1	216.7
0.5	TO	0.6	300.0	13	433.3	48.5	195.0	0.13	0.2	433.3
2.1	TO	2.3	600.0	4	266.7	29.9	120.0	0.08	0.1	266.7
2.8			150.0	13	216.7	24.3	97.5	0.07	0.1	216.7
3.3	TO	3.9	2300.0	4	1022.2	114.5	460.0	0.31	0.5	1022.2
3.9	TO	4.0	300.0	13	433.3	48.5	195.0	0.13	0.2	433.3
4.5	TO	4.6	300.0	13	433.3	48.5	195.0	0.13	0.2	433.3
4.7	TO	4.8	300.0	13	433.3	48.5	195.0	0.13	0.2	433.3
5.4			150.0	13	216.7	24.3	97.5	0.07	0.1	216.7
SOUTHBOUND LANE										
LM	TO	LM								
0.4	TO	0.5	300.0	13	433.3	48.5	195.0	0.13	0.2	433.3
1.6			50.0	13	72.2	8.1	32.5	0.02	0.0	72.2
1.7	TO	1.8	300.0	13	433.3	48.5	195.0	0.13	0.2	433.3
2.1	TO	2.2	300.0	13	433.3	48.5	195.0	0.13	0.2	433.3
2.7	TO	2.8	300.0	13	433.3	48.5	195.0	0.13	0.2	433.3
3.4			75.0	13	108.3	12.1	48.8	0.03	0.1	108.3
3.9	TO	4.0	300.0	13	433.3	48.5	195.0	0.13	0.2	433.3
4.4	TO	4.6	300.0	13	433.3	48.5	195.0	0.13	0.2	433.3
RURAL SUBTOTAL					6453	723	2904	2.0	3.2	6453
URBAN										
NORTHBOUND LANE										
6.0	TO	6.3	900.0	13	1300.0	145.6	585.0	0.39	0.7	1300.0
SOUTHBOUND LANE										
6.0	TO	6.3	900.0	13	1300.0	145.6	585.0	0.39	0.7	1300.0
URBAN SUBTOTAL					2600	291	1170	0.8	1.3	2600
LIVINGSTON COUNTY SUBTOTAL					9053	1014	4074	2.8	4.5	9053
TOTAL					15474	1733	6964	4.7	7.7	15474

**AREA FROM LONG POINT RD. TO BNSF RAILWAY BRIDGE TO USE HMA SURFACE REMOVAL MILLINGS ON LOW SHOULDERS.

PAVEMENT MARKING SCHEDULE							
LOCATION	PAINT PVMT MK (2 APP)				SHORT TERM PVMT MKING FOOT	WORK ZONE PAVT MK REM SQ FT	RAISED REF PVT MK REM EACH
	4"		6"				
	WHITE FOOT	YELLOW FOOT	WHITE FOOT	YELLOW FOOT			
OAKLEY AVE. TO RICHARDS RD. (LASALLE COUNTY)							
URBAN							
NORTHBOUND LANES							
CENTERLINE MILL AND RESURFACE			1250.0		62.5	21	31
TRANSVERSE 6' JOINT REPAIR AT 12 LOCATIONS*	144	144			7	2	
SOUTHBOUND LANES							
CENTERLINE MILL AND RESURFACE			1750.0		87.5	29	44
TRANSVERSE 6' JOINT REPAIR AT 12 LOCATIONS*	144	144			7.2	2	
URBAN SUBTOTAL	288	288	3000	0	164	55	75
RURAL							
NORTHBOUND LANES							
CENTERLINE MILL AND RESURFACE			1250.0		62.5	21	31
TRANSVERSE 6' JOINT REPAIR AT 22 LOCATIONS*	264	264			13.2	4	
SOUTHBOUND LANES							
CENTERLINE MILL AND RESURFACE			1750.0		87.5	29	44
TRANSVERSE 6' JOINT REPAIR AT 22 LOCATIONS*	264	264			13.2	4	
RURAL SUBTOTAL	528	528	3000	0	176	59	75
LASALLE COUNTY SUBTOTAL	816	816	6000	0	340	114	150

*LOCATIONS TO BE DETERMINED IN THE FIELD BY THE ENGINEER

PAVEMENT MARKING SCHEDULE									
LOCATION	PAINT PVMT MK (2 APP)				SHORT TERM PVMT MKING	WORK ZONE PAVT MK REM	RAISED REF PVT MK REM		
	4"		6"						
	WHITE	YELLOW	WHITE	YELLOW				FOOT	SQ FT
	FOOT	FOOT	FOOT	FOOT					
LONG POINT RD. TO BNSF RAILWAY BRIDGE (LIVINGSTON COUNTY)									
RURAL									
NORTHBOUND LANE									
LM	TO	LM							
0.0			300		75.0	15.0	5	2.0	
0.5	TO	0.6	600		150.0	30.0	10	4.0	
2.1	TO	2.3	1200						
2.8			300		75.0	15.0	5	2.0	
3.3	TO	3.9	4600						
3.9	TO	4.0	600		150.0	30.0	10	4.0	
4.5	TO	4.6	600		150.0	30.0	10	4.0	
4.7	TO	4.8	600		150.0	30.0	10	4.0	
5.4			300		75.0	15.0	5	2.0	
SOUTHBOUND LANE									
LM	TO	LM							
0.4	TO	0.5	600		150.0	30.0	10	4.0	
1.6			100		25.0	5.0	2	1.0	
1.7	TO	1.8	600		150.0	30.0	10	4.0	
2.1	TO	2.2	600		150.0	30.0	10	4.0	
2.7	TO	2.8	600		150.0	30.0	10	4.0	
3.4			150		38.0	7.5	3	1.0	
3.9	TO	4.0	600		150.0	30.0	10	4.0	
4.4	TO	4.6	600		150.0	30.0	10	4.0	
RURAL SUBTOTAL			12950	0	0	1788	358	119	48
URBAN									
NORTHBOUND LANE									
6.0	TO	6.3	1800	1800	450.0	90.0	30	11.0	
SOUTHBOUND LANE									
6.0	TO	6.3	1800	1800	450.0	90.0	30	11.0	
URBAN SUBTOTAL			3600	3600	0	900	180	60	22
LIVINGSTON COUNTY SUBTOTAL			16550	3600	0	2688	538	179	70
TOTAL			21782		8688	878	293	220	

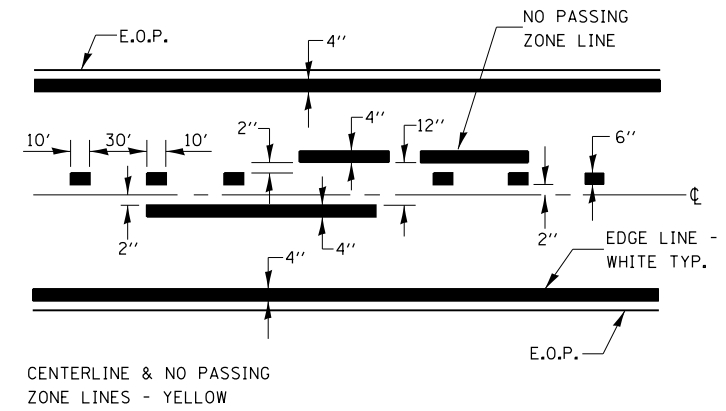
•INTERMITTENT SPRING ROAD REPAIR 2014-3
 ••LASALLE & LIVINGSTON

FILE NAME =	USER NAME = budzynskim	DESIGNED -	REVISED -
ct:\pw\work\p1dot\budzynskim\d0388006\0666088-sht-schedule.dgn		DRAWN -	REVISED -
	PLOT SCALE = 100.0000' / 1in.	CHECKED -	REVISED -
	PLOT DATE = 4/11/2014	DATE -	REVISED -

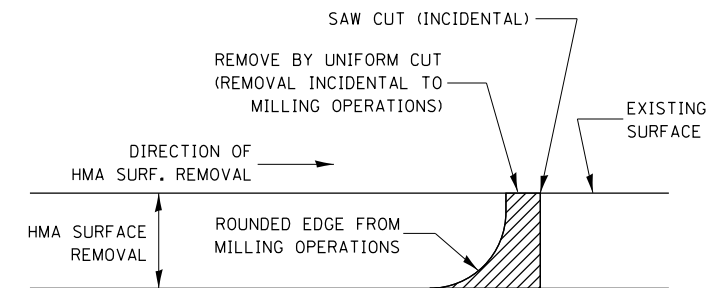
STATE OF ILLINOIS
 DEPARTMENT OF TRANSPORTATION

SCHEDULES			
SCALE:	SHEET NO. 4 OF 4 SHEETS	STA.	TO STA.

F.A.P. RTE.	SECTION	COUNTY	TOTAL SHEETS	SHEET NO.
68	*	**	10	9
CONTRACT NO. 66088				
ILLINOIS FED. AID PROJECT				



PAVEMENT MARKING



NOTE:
 WHEN MILLING OPERATIONS PRODUCE A ROUNDED EDGE,
 THEN A SAW CUT SHALL BE USED TO MANUFACTURE
 A PERPENDICULAR EDGE AS SHOWN IN THE DETAIL.
 THE ENGINEER SHALL BE THE SOLE JUDGE
 CONCERNING THE USE OF THIS DETAIL

HMA DETAIL AT BUTT JOINTS

FILE NAME =	USER NAME = budzynskim	DESIGNED -	REVISED -
ct:\pw\work\p\dot\budzynskim\d0388006\066088-sht-details.dgn		DRAWN -	REVISED -
	PLOT SCALE = 100.0000' / in.	CHECKED -	REVISED -
	PLOT DATE = 4/11/2014	DATE -	REVISED -

STATE OF ILLINOIS
 DEPARTMENT OF TRANSPORTATION

SCALE: SHEET NO. 1 OF 1 SHEETS STA. TO STA.

•INTERMITTENT SPRING ROAD REPAIR 2014-3
 ••LASALLE & LIVINGSTON

F.A.P. RTE.	SECTION	COUNTY	TOTAL SHEETS	SHEET NO.
68	*	**	10	10
CONTRACT NO. 66088				
ILLINOIS FED. AID PROJECT				