

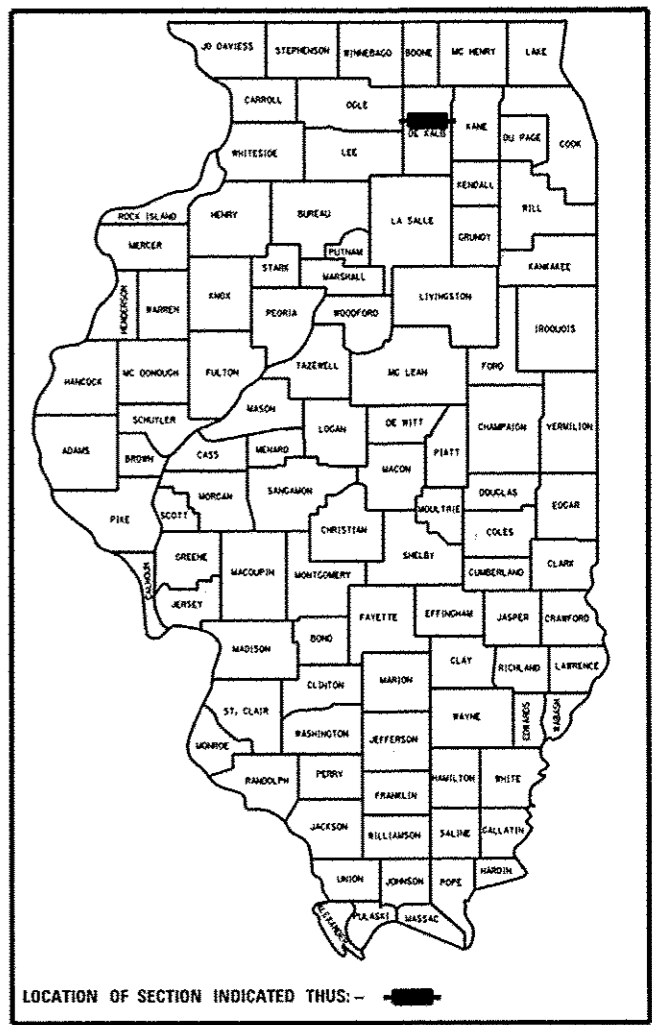
D-93-067-14

STATE OF ILLINOIS
DEPARTMENT OF TRANSPORTATION
DIVISION OF HIGHWAYS

**PROPOSED
HIGHWAY PLANS**

ROUTE VARIOUS
SECTION INTMT SPRING RD REPAIR 2014-4

INTERMITTENT RESURFACING
DEKALB COUNTY



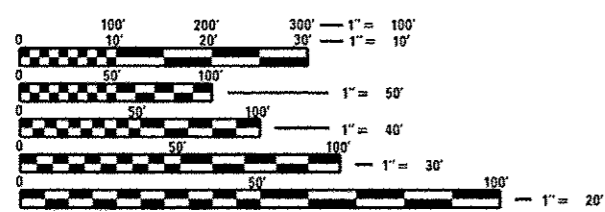
LOCATION OF SECTION INDICATED THUS: - [black box] -

INDEX OF SHEETS

- 1 COVER SHEET
- 2 GENERAL NOTES
- 3-4 SUMMARY OF QUANTITIES
- 5 TYPICAL SECTIONS
- 6-7 SCHEDULES
- 8 DETAILS

LIST OF ILLINOIS DOT HIGHWAY STANDARDS

- 000001-06 STANDARD SYMBOLS, ABBREVIATIONS AND PATTERNS
- 001006 DECIMAL OF AN INCH AND OF A FOOT
- 424001-07 PERPENDICULAR CURB RAMPS FOR SIDEWALKS
- 424006-01 DIAGONAL CURB RAMPS FOR SIDEWALKS
- 424011-01 CORNER PARALLEL CURB RAMPS FOR SIDEWALKS
- 606001-05 CONCRETE CURB TYPE B AND COMBINATION CONCRETE CURB AND GUTTER
- 606006-02 OUTLET FOR CONCRETE CURB AND GUTTER, TYPE B-6.24 (B-15.60)
- 701001-02 OFF-ROAD OPERATIONS 2L, 2W, MORE THAN 15' (4.5 m) AWAY
- 701006-05 OFF-ROAD OPERATIONS 2L, 2W, 15' (4.5 m) TO 24" (600 mm) FROM PAVEMENT EDGE
- 701011-04 OFF-ROAD MOVING OPERATIONS 2L, 2W, DAY ONLY
- 701201-04 LANE CLOSURE, 2L, 2W, DAY ONLY, FOR SPEEDS **e" 45 MPH
- 701301-04 LANE CLOSURE, 2L, 2W, SHORT TIME OPERATIONS
- 701306-03 LANE CLOSURE, 2L, 2W, SLOW MOVING OPERATIONS DAY ONLY, FOR SPEEDS **e" 45 MPH
- 701501-06 URBAN LANE CLOSURE, 2L, 2W, UNDIVIDED
- 701901-03 TRAFFIC CONTROL DEVICES
- 780001-04 TYPICAL PAVEMENT MARKINGS
- 781001-03 TYPICAL APPLICATIONS RAISED REFLECTIVE PAVEMENT MARKERS



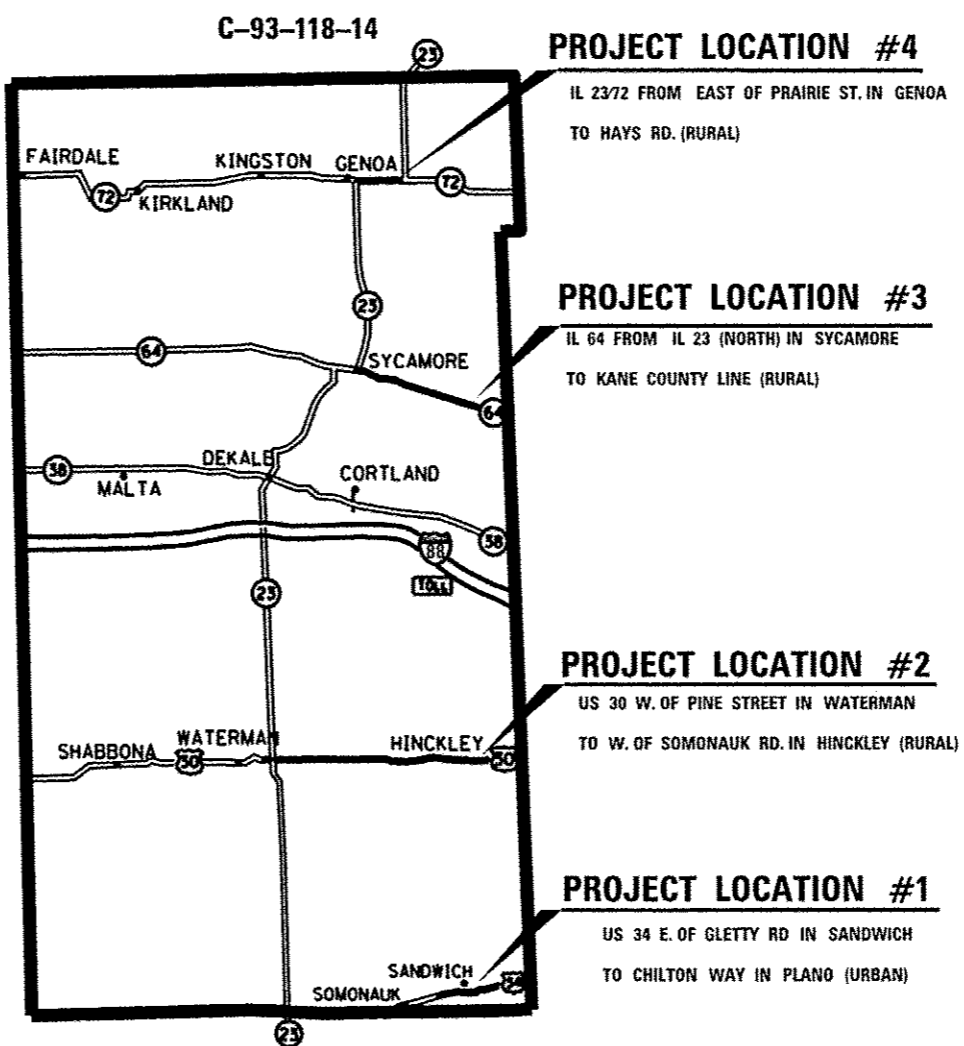
FULL SIZE PLANS HAVE BEEN PREPARED USING STANDARD ENGINEERING SCALES. REDUCED SIZED PLANS WILL NOT CONFORM TO STANDARD SCALES. IN MAKING MEASUREMENTS ON REDUCED PLANS, THE ABOVE SCALES MAY BE USED.

J.U.L.I.E.
JOINT UTILITY LOCATION INFORMATION FOR EXCAVATION
1-800-892-0123
OR 811

PROJECT ENGINEER: CRAIG REED, P.E.
PROJECT MANAGER: PAT BRABOY, P.E.

CONTRACT NO. 66D89

	GROSS LENGTH (Mi.)	NET LENGTH (Mi.)
LOCATION #1	3.5	0.45
LOCATION #2	6.4	4.45
LOCATION #3	4.3	3.45
LOCATION #4	1.7	0.7
TOTAL MILES	15.9	9.05



GROSS LENGTH = 83,952 FT. = 15.9 MILE
NET LENGTH = 47,784 FT. = 9.05 MILE

- PROJECT LOCATION #1 ADT = 10,600
- PROJECT LOCATION #2 ADT = 4,300
- PROJECT LOCATION #3 ADT = 10,800
- PROJECT LOCATION #4 ADT = 8,350

STATE OF ILLINOIS
DEPARTMENT OF TRANSPORTATION
DIVISION OF HIGHWAYS

SUBMITTED April 11, 2014
Paul Lockhart
DEPUTY DIRECTOR OF HIGHWAYS, REGION ENGINEER

May 9, 2014
John D. Branzeoli, P.E.
ENGINEER OF DESIGN AND ENVIRONMENT

May 9, 2014
Omer Osman, P.E.
DIRECTOR OF HIGHWAYS, CHIEF ENGINEER

**PRINTED BY THE AUTHORITY
OF THE STATE OF ILLINOIS**