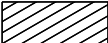



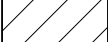



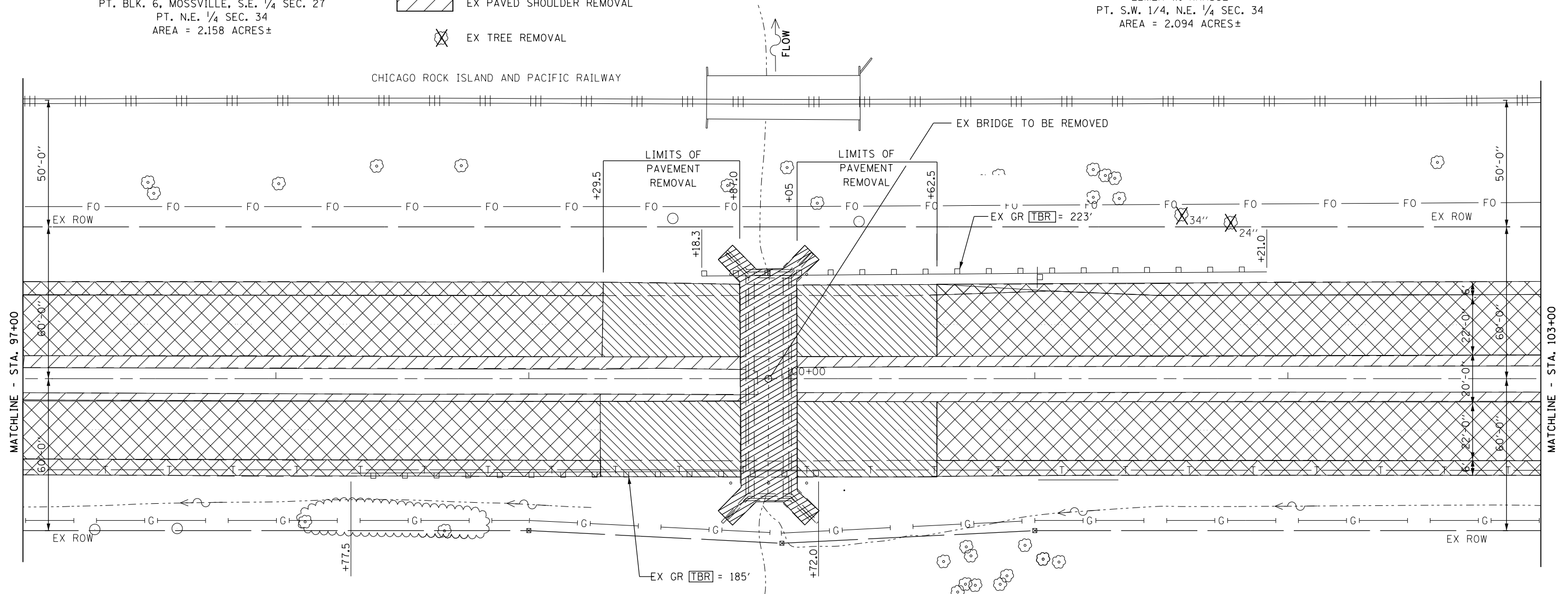
LEGEND

-  BRIDGE REMOVAL
-  HMA SURFACE REMOVAL - BUTT JOINT
-  HMA SURFACE REMOVAL VARIABLE DEPTH
-  EX PAVEMENT REMOVAL
-  EX PAVED SHOULDER REMOVAL
-  EX TREE REMOVAL



MOSES WILLIAM NEAL
 PT. BLK. 6, MOSSVILLE, S.E. 1/4 SEC. 27
 PT. N.E. 1/4 SEC. 34
 AREA = 2.158 ACRES±

ELMER W. KRAUSE
 PT. S.W. 1/4, N.E. 1/4 SEC. 34
 AREA = 2.094 ACRES±



SEC 34, T 10N, R 8E, 4th PM



| | | |
|---------------------------|------------|-----------|
| USER NAME = *USER* | DESIGNED - | REVISED - |
| PLOT SCALE = *SCALE* | DRAWN - | REVISED - |
| PLOT DATE = *DATE* *TIME* | CHECKED - | REVISED - |
| | DATE - | REVISED - |

**STATE OF ILLINOIS
 DEPARTMENT OF TRANSPORTATION**

REMOVAL PLAN

SCALE: SHEET NO. OF SHEETS STA. TO STA.

| F.A.U. RTE. | SECTION | COUNTY | TOTAL SHEETS | SHEET NO. |
|---|---------|--------|--------------|-----------|
| 64 | (10B)BR | PEORIA | 77 | 17 |
| CONTRACT NO. 68481 | | | | |
| FED. ROAD DIST. NO. 4 ILLINOIS FED. AID PROJECT | | | | |