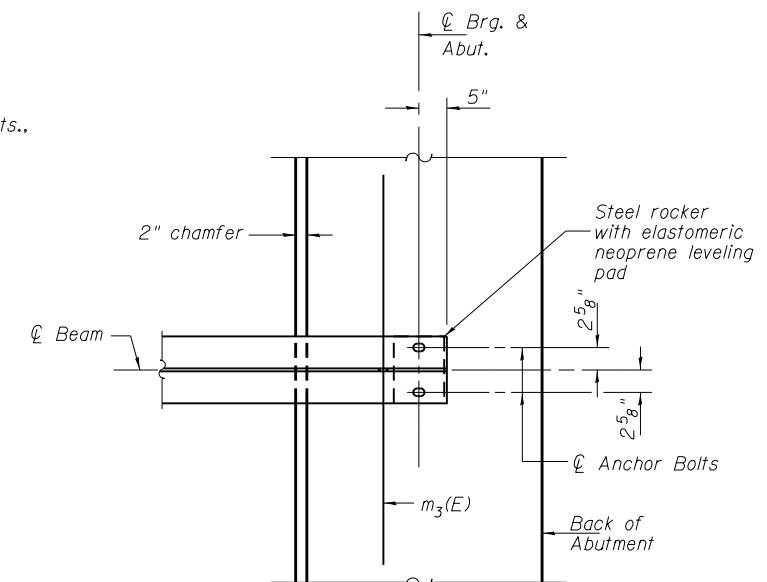
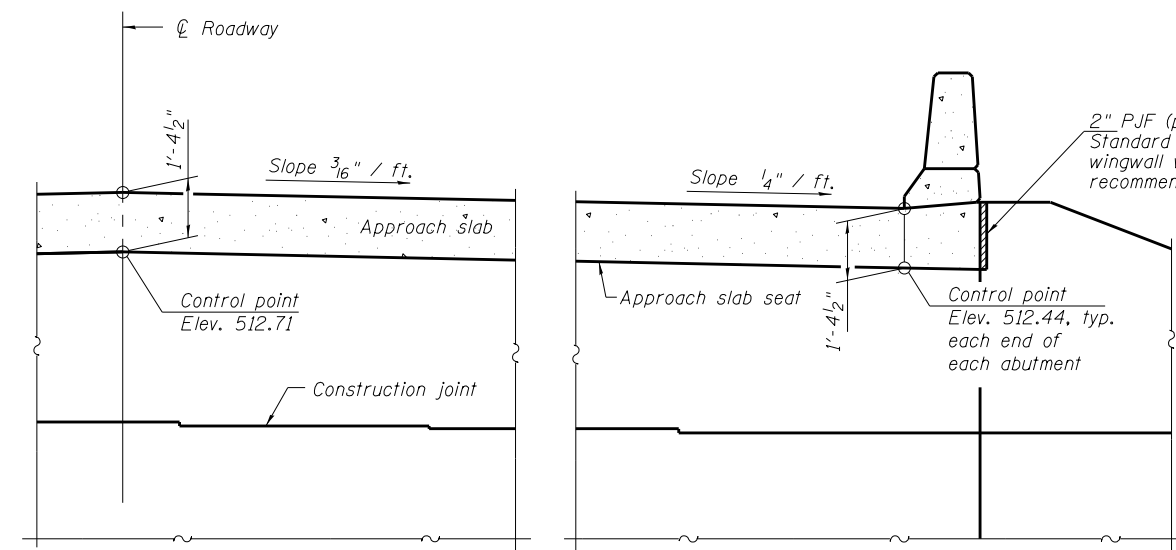


DIAPHRAGM ELEVATION AT WEST ABUTMENT
(Looking west - East abutment similar)

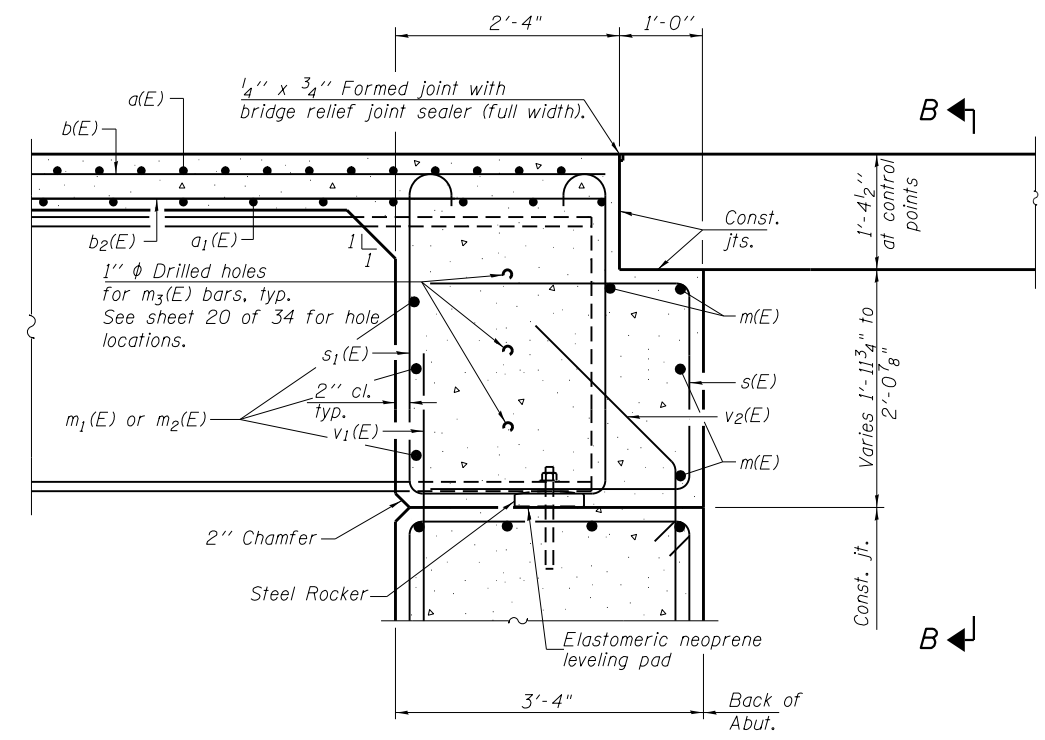


PARTIAL PLAN AT ABUTMENT
(Showing bottom flange of beam)

Notes:
 Reinforcement bars in diaphragm are billed with superstructure on sheet 12 of 34.
 Concrete in diaphragm is included with Concrete Superstructure on sheet 12 of 34.
 For details of bars s(E) and s1(E) see sheet 12 of 34.
 The approach slab seat shall have a constant slope determined from the control points shown.
 For bearing details see sheet 20 of 34.
 For details of bar v2(E) see sheet 21 of 34.



SECTION B-B



SECTION A-A

FILE NAME = 0720229-68697-013-Diaphragm Details.dgn	USER NAME =	DESIGNED - CMV	REVISED -	STATE OF ILLINOIS DEPARTMENT OF TRANSPORTATION	DIAPHRAGM DETAILS STRUCTURE NO. 072-0229	F.A.S. R.E. = 1388	SECTION = (Z-1D-BR-1)BR	COUNTY = PEORIA	TOTAL SHEETS = 89	SHEET NO. = 55	
BACON FARMER WORKMAN ENGINEERING & TESTING, INC.	PLOT SCALE =	CHECKED - BWP	REVISED -			CONTRACT NO. 68697					
433 NORTH COURT STREET MARIETTA, IL 61754-0097 PHONE - 815.937.9100	PLOT DATE = 3/18/2014	DRAWN - BJV	REVISED -			ILLINOIS FED. AID PROJECT					
		CHECKED - CMV	REVISED -			SHEET NO. 13 OF 34 SHEETS					