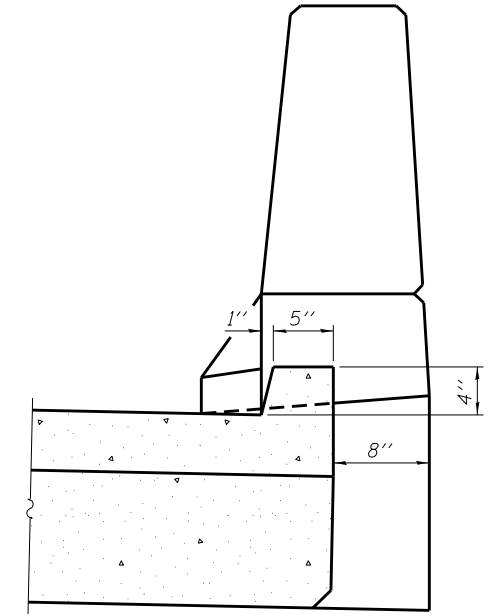
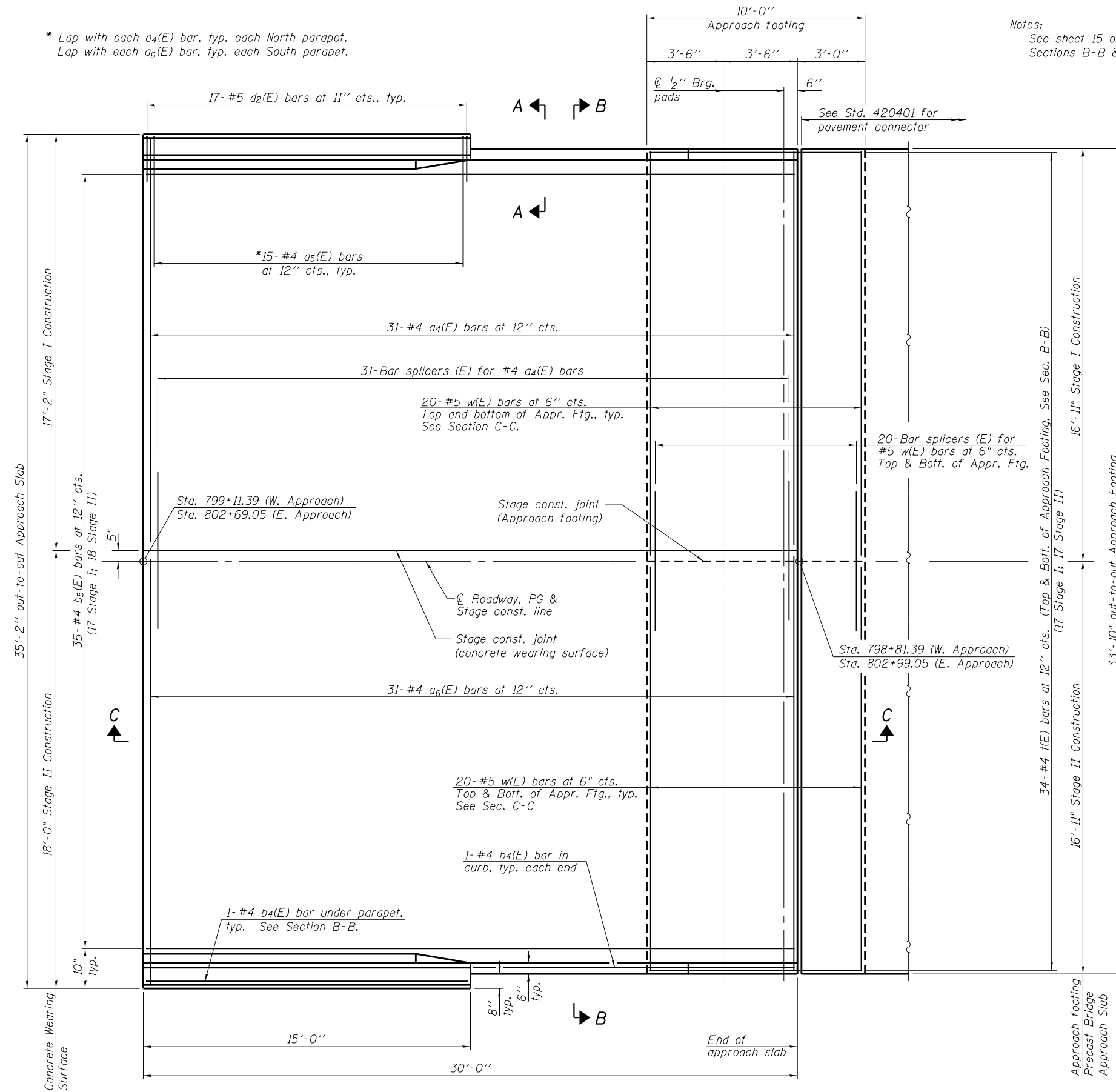
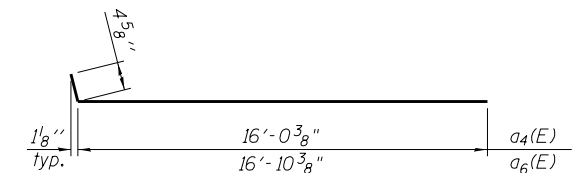


* Lap with each a₄(E) bar, typ. each North parapet.
Lap with each a₆(E) bar, typ. each South parapet.

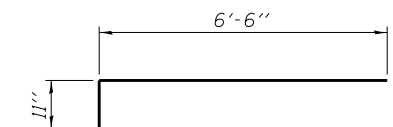
Notes:
See sheet 15 of 34 for
Sections B-B & C-C.



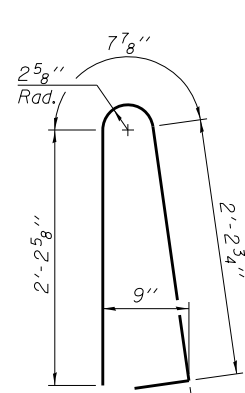
SECTION A-A



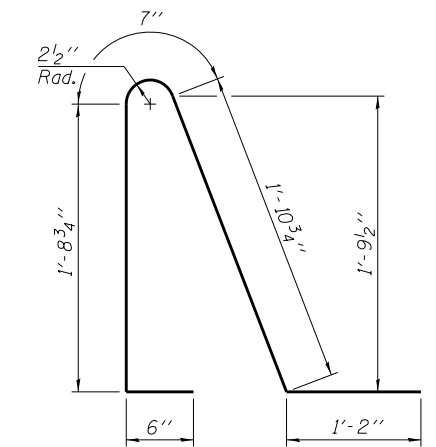
BAR a₄(E) & a₆(E)



BAR a₅(E)



BAR d(E)



BAR d₂(E)

PLAN
(Showing wearing surface. East approach shown.
West approach similar by mirror image.)

(Sheet 1 of 4)