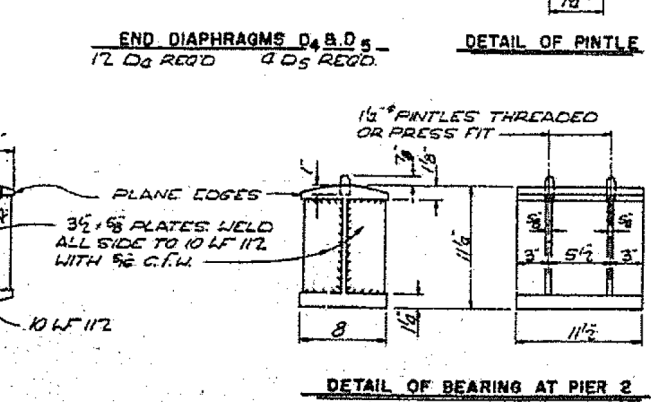
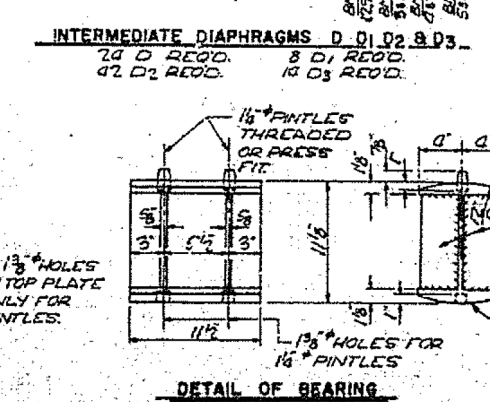
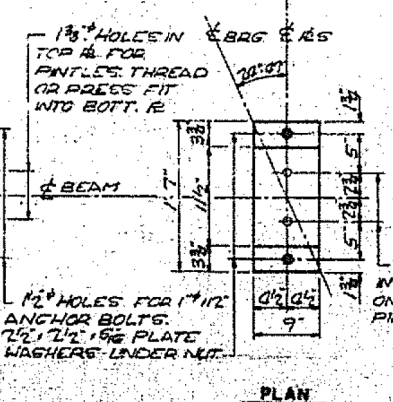
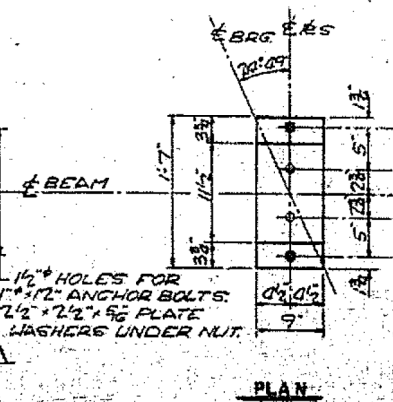
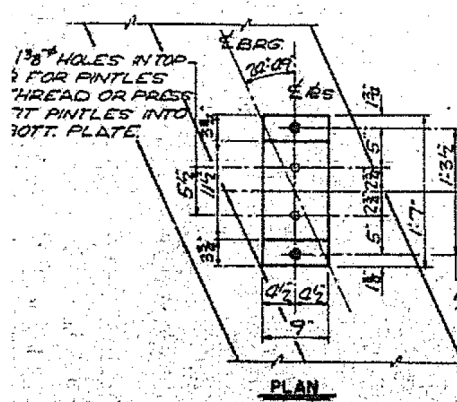
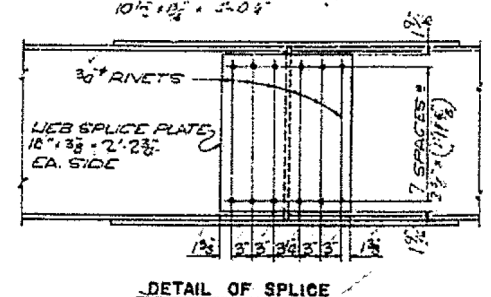
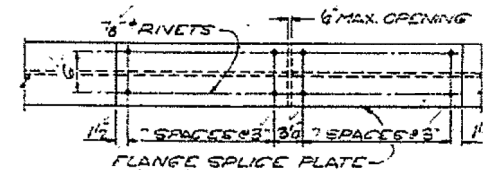
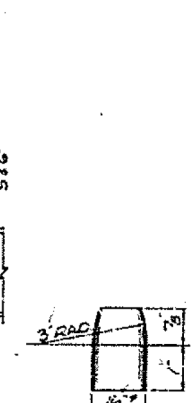
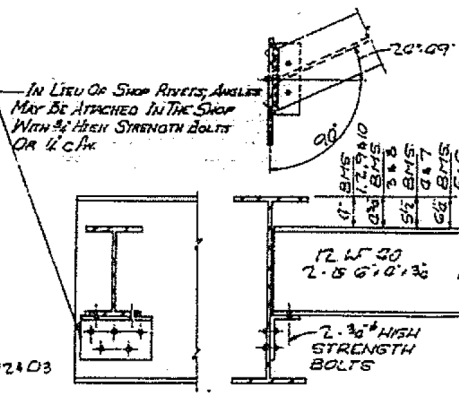
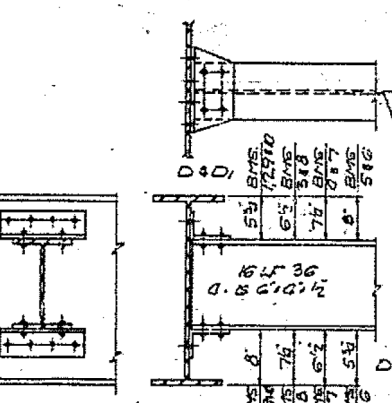
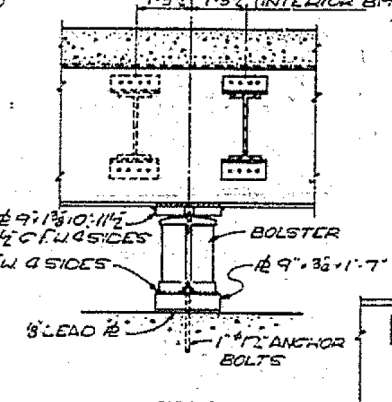
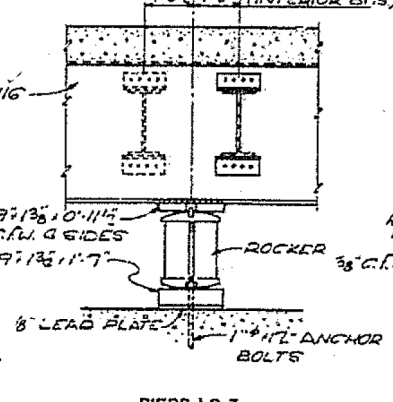
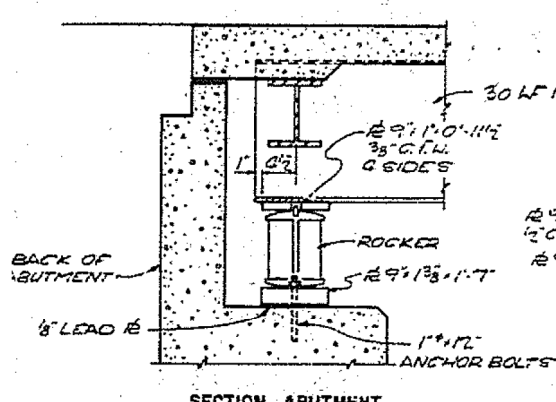
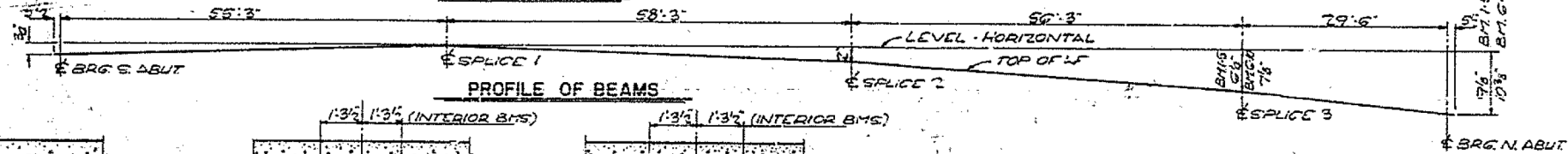
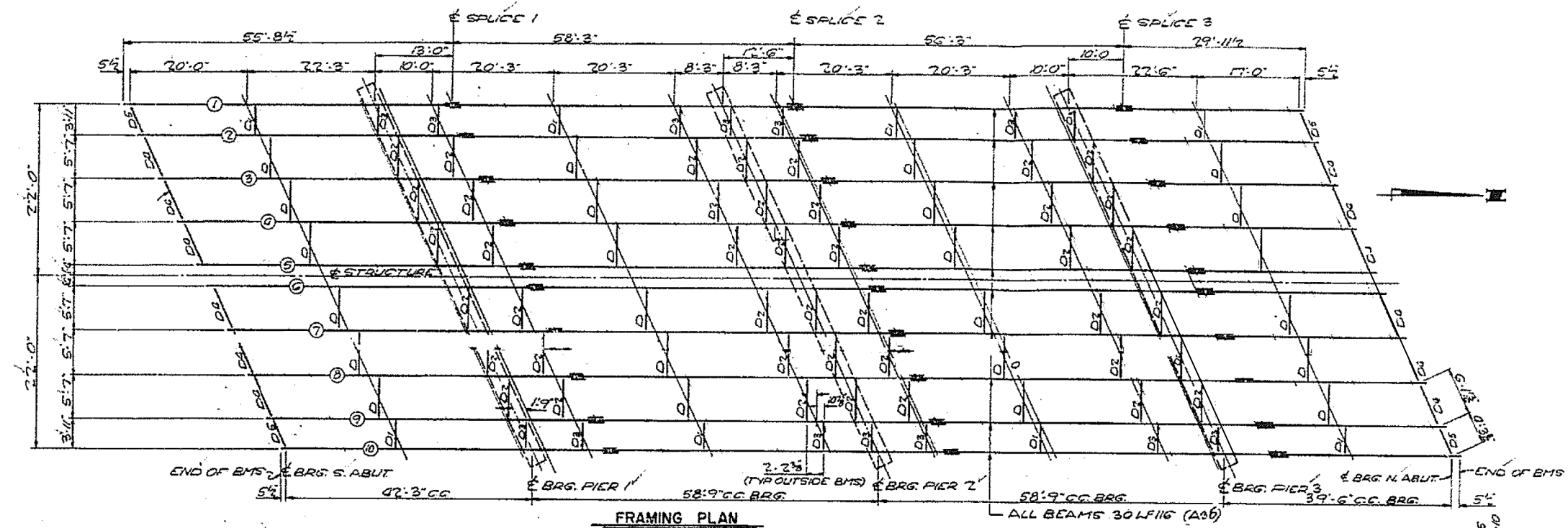


LOCATION 4 S.N. 048-0068 INFORMATION ONLY



STRUCTURAL STEEL
 F.A. RTE 29 - SECTION 21 HB-1
 LINCOLN PARK DRIVE OVER FA. 29
 KNOX COUNTY, ILL.
 STA. 574 183.77

FILE NAME - Contract 68B47 bridge painting 2014.dgn	USER NAME - TOM INGLIS	DESIGNED - TOM INGLIS	REVISED -	STATE OF ILLINOIS DEPARTMENT OF TRANSPORTATION	LOCATION 4 FRAMING PLAN STRUCTURE 048-0068				F.A. RTE.	SECTION	COUNTY	TOTAL SHEETS	SHEET NO.			
Default	PLOT SCALE = 100.0000' / in.	CHECKED -	REVISED -		SCALE:	SHEET	OF	SHEETS	STA.	TO	STA.	VAR	D4 BRIDGE PAINTING 2014	VARIOUS	21	17
	PLOT DATE = 3/26/2014	DATE -	REVISED -										CONTRACT NO. 68B47			
													ILLINOIS FED. AID PROJECT			