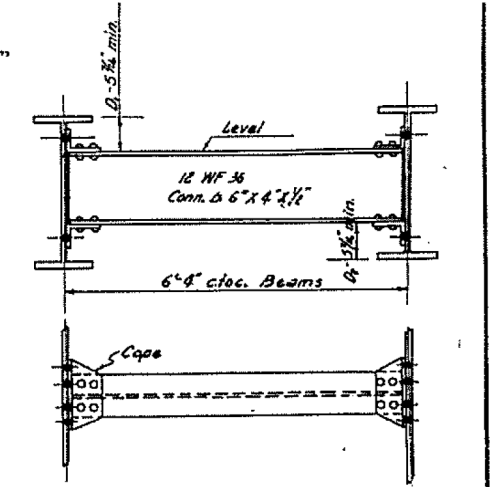
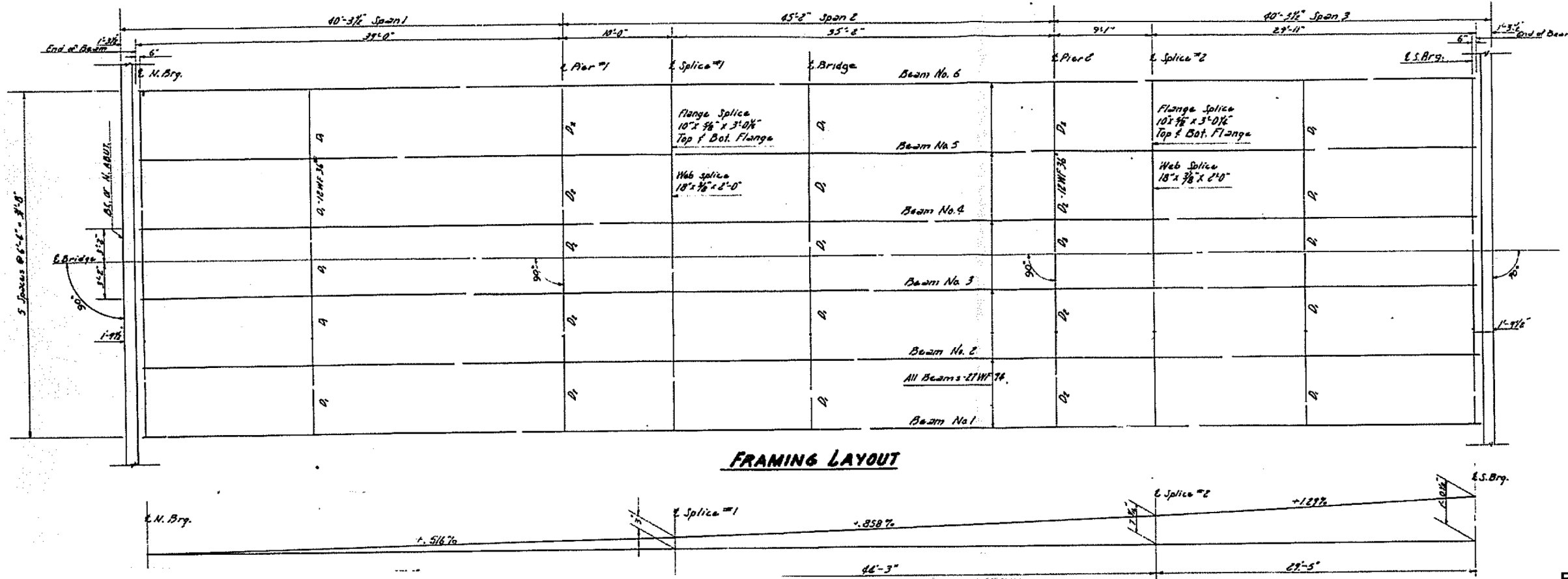
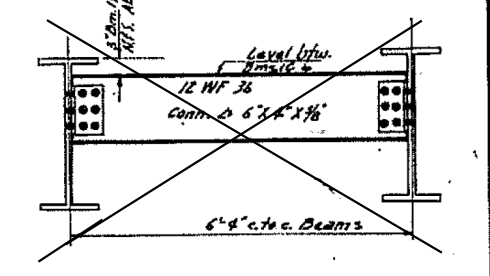


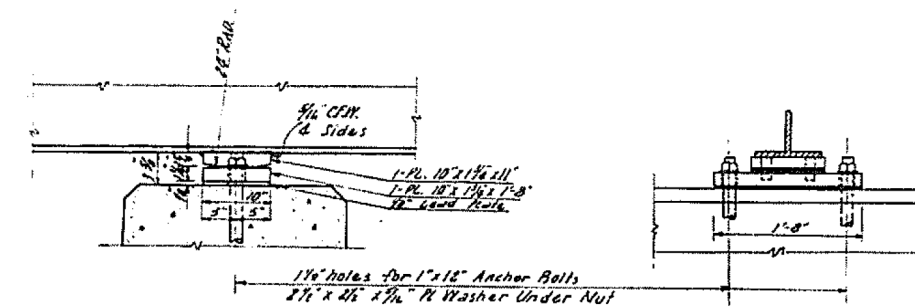
LOCATION 5 S.N. 094-0002 INFORMATION ONLY



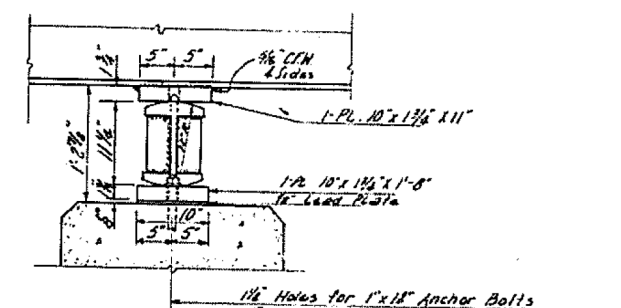
DETAIL OF DIAPHRAGMS - D1 & D2
15-d₁ Req. 10 d₂ Req.



DETAIL OF DIAPHRAGMS - D
BURIED IN SEMI-INTERGAL ABUTMENT



DETAIL OF BEARING AT PIER 1



DETAIL OF BEARING AT PIER 2

FILE NAME = Contract 68B47 bridge painting 2014.dgn	USER NAME = keathbr	DESIGNED - TOM INGLIS	REVISED -
		DRAWN -	REVISED -
	PLOT SCALE = 100.0000' / in.	CHECKED -	REVISED -
Default	PLOT DATE = 3/26/2014	DATE -	REVISED -

STATE OF ILLINOIS
DEPARTMENT OF TRANSPORTATION

LOCATION 5 FRAMING PLAN STRUCTURE 094-0002			
SCALE:	SHEET	OF SHEETS	STA. TO STA.

F.A. RTE.	SECTION	COUNTY	TOTAL SHEETS	SHEET NO.
VAR	D4 BRIDGE PAINTING 2014	VARIOUS	21	19
CONTRACT NO. 68B47				
ILLINOIS FED. AID PROJECT				