

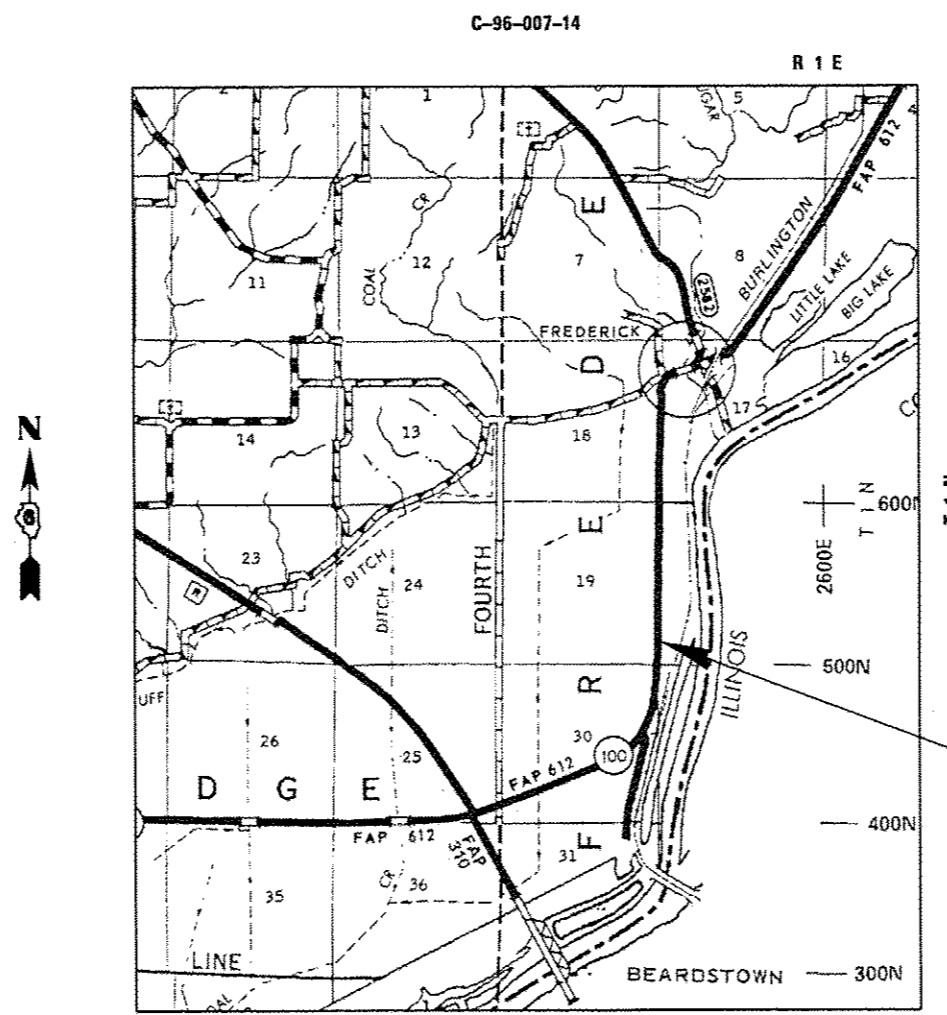
STATE OF ILLINOIS  
DEPARTMENT OF TRANSPORTATION  
DIVISION OF HIGHWAYS  
**PROPOSED  
CONTRACT MAINTENANCE**

FOR INDEX OF SHEETS, SEE SHEET NO. 2

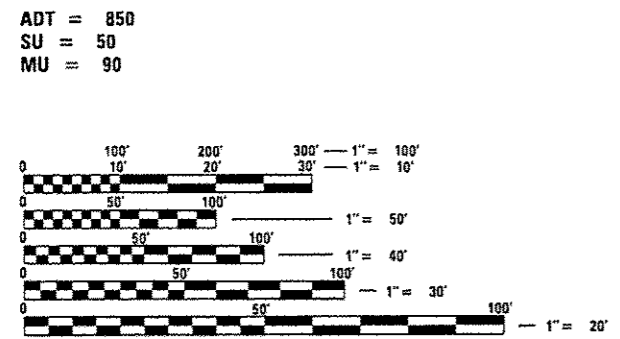
FAP 612 (IL 100)  
SECTION (112) I-3

SCHUYLER COUNTY

F.A.P. RTE.	SECTION	COUNTY	TOTAL SHEETS	SHEET NO.
612	(112) I-3	SCHUYLER	6	1
FED. ROAD DIST. NO.	ILLINOIS	CONTRACT NO. 72G43		



PROJECT LOCATION  
STA. 3+200.00



FULL SIZE PLANS HAVE BEEN PREPARED USING STANDARD ENGINEERING SCALES. REDUCED SIZED PLANS WILL NOT CONFORM TO STANDARD SCALES. IN MAKING MEASUREMENTS ON REDUCED PLANS, THE ABOVE SCALES MAY BE USED.

J.U.L.I.E.  
JOINT UTILITY LOCATION INFORMATION FOR EXCAVATION  
1-800-892-0123  
OR 811

PLAN AND CONTRACT TECHNICIAN  
TIMOTHY SHARP (217)782-7743

CONTRACT NO. 72G43

STATE OF ILLINOIS  
DEPARTMENT OF TRANSPORTATION  
DIVISION OF HIGHWAYS

SUBMITTED April 2 20 14  
Rep 2 Daskin  
DEPUTY DIRECTOR OF HIGHWAYS, REGION ENGINEER

May 9 20 14  
John D. Baranzello, P.E.  
ENGINEER OF DESIGN AND ENVIRONMENT

May 9 20 14  
Omur Osman, P.E.  
DIRECTOR OF HIGHWAYS, CHIEF ENGINEER

**PRINTED BY THE AUTHORITY  
OF THE STATE OF ILLINOIS**

INDEX OF SHEETS

1. COVER
2. INDEX OF SHEETS, GENERAL NOTES, AND HIGHWAY STANDARDS
3. SUMMARY OF QUANTITIES
4. PLAN
5. TYPICAL SECTIONS
6. DETAILS

HIGHWAY STANDARDS

- 701001-02 OFF-RD OPERATIONS, 2L, 2W, MORE THAN 15' AWAY FROM EDGE OF PAVEMENT  
 701006-05 OFF-RD OPERATIONS, 2L, 2W, 15' TO 24" FROM EDGE OF PAVEMENT  
 701011-04 OFF-RD MOVING OPERATIONS, 2L, 2W, DAY ONLY  
 701901-03 TRAFFIC CONTROL DEVICES  
 B.L.R. 21-9 TYPICAL APPLICATION OF TRAFFIC CONTROL DEVICES FOR CONSTRUCTION ON RURAL HIGHWAYS  
 701301-04 LANE CLOSURE, 2L, 2W, SHORT TIME OPERATIONS

GENERAL NOTES

1. ANY REFERENCE TO THE STANDARDS THROUGHOUT THE PLANS SHALL BE INTERPRETED TO BE THE LATEST STANDARDS OF THE DEPARTMENT AS INCLUDED IN THE PLANS.
2. TRENCH BACKFILL UNDER THE ROADWAY WILL BE COURSE AGGREGATE.
3. REMOVAL OF EXISTING FIELD TILE WILL BE INCLUDED WITH THE STORM SEWER AND NOT PAID FOR SEPARATELY.

STATE OF ILLINOIS DEPARTMENT OF TRANSPORTATION DIVISION OF HIGHWAYS DISTRICT 6	
EXAMINED	March 31 20 14 <i>Michael P. ...</i> ENGINEER OF OPERATIONS
EXAMINED	MARCH 24 20 14 <i>Jimmy ...</i> ENGINEER OF PROJECT IMPLEMENTATION
EXAMINED	March 31 20 14 [Signature] ENGINEER OF PROGRAM DEVELOPMENT

FILE NAME *	USER NAME * shp-plt	DESIGNED -	REVISED -	STATE OF ILLINOIS DEPARTMENT OF TRANSPORTATION	INDEX OF SHEETS, HIGHWAY STANDARDS AND GENERAL NOTES	F.A.P RTE.	SECTION	COUNTY	TOTAL SHEETS	SHEET NO.
c:\work\awidot\shp-plt\0358729\0672	43-ant-gennote.dgn	DRAWN -	REVISED -			612	(112) 1-3	SCHUYLER	6	2
Default	PLOT SCALE * 2.0000 "/ in.	CHECKED -	REVISED -		SCALE:					
	PLOT DATE : Apr-01-2014 06:06:30AM	DATE -	REVISED -		SHEET	OF	SHEETS	STA.	TO	STA.
ILLINOIS FED. AID PROJECT CONTRACT NO. 72G43										

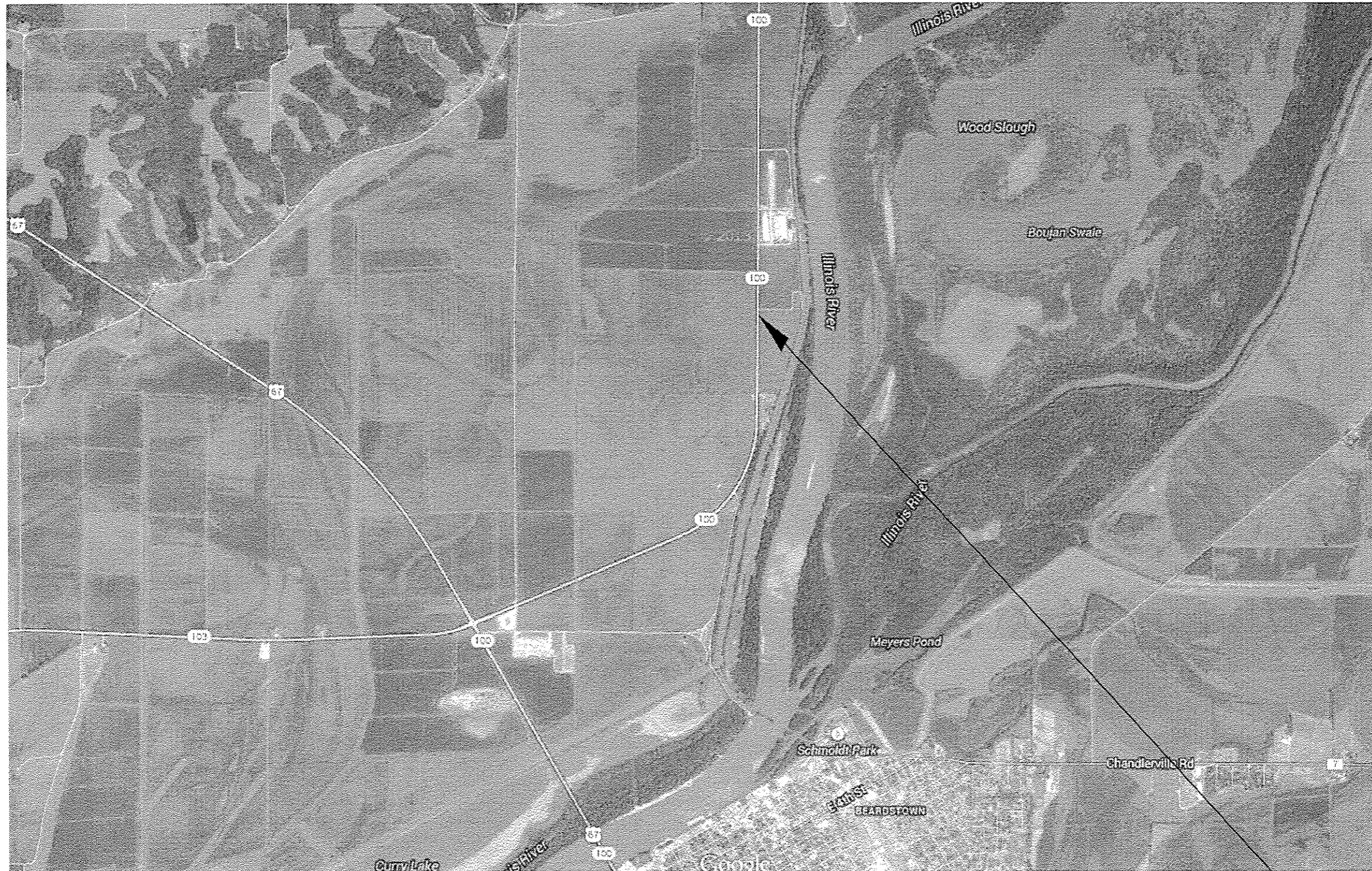
CODE NO.	ITEM	UNIT	TOTAL QUANTITY	CONSTR. CODE
				100% STATE
				ROADWAY 0044 S.N.
20800150	TRENCH BACKFILL	CU YD	80	80
44201389	CLASS C PATCHES, TYPE II 13 INCH	SQ YD	8	8
61101013	STORM SEWER PROTECTED, CLASS A, TYPE I 12"	FOOT	54	54
61100605	MISCELLANEOUS CONCRETE	CU YD	1.5	1.5
61133100	FIELD TILE JUNCTION VAULT 2' DIAMETER	EACH	2	2
67100100	MOBILIZATION	L SUM	1	1
70101830	TRAFFIC CONTROL AND PROTECTION, STANDARD B.L.R. 21	L SUM	1	1
Z0016702	DETOUR SIGNING	L SUM	1	1

FILE NAME * z:\paw\work\avidot\sharptd\d0358721\0672243-shr-500.dgn	USER NAME * sharptd	DESIGNED - DRAWN -	REVISED - REVISED -
SHT.PLAN	PLOT DATE * Apr-01-2014 06:07:27AM	CHECKED - DATE -	REVISED - REVISED -

**STATE OF ILLINOIS  
DEPARTMENT OF TRANSPORTATION**

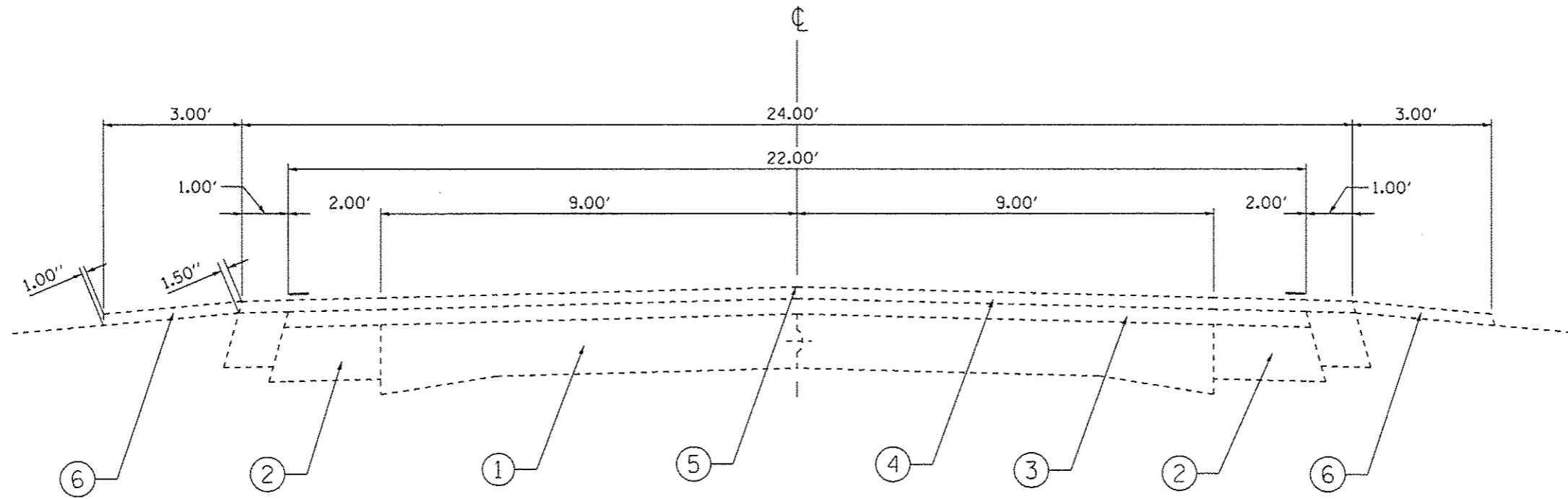
<b>SUMMARY OF QUANTITIES</b>	
SCALE: _____	SHEET _____ OF _____ SHEETS STA. _____ TO STA. _____

F.A.P. RTE. 612	SECTION (112) 1-3	COUNTY SCHUYLER	TOTAL SHEETS 6	SHEET NO. 3
CONTRACT NO. 72G43			ILLINOIS FED. AID PROJECT	



PROJECT LOCATION  
STA. 3+200.00

FILE NAME : c:\p_w\work\pav\dot\sharptd\8258729\0672	USER NAME : sharptd	DESIGNED -	REVISED -	<b>STATE OF ILLINOIS</b> <b>DEPARTMENT OF TRANSPORTATION</b>	<b>PLAN</b>	F.A.P. RTE.	SECTION	COUNTY	TOTAL SHEETS	SHEET NO.
	43-shs-plan.dgn	DRAWN -	REVISED -			612	(112) 1-3	SCHUYLER	6	4
	PLOT SCALE : 118.880000' / in.	CHECKED -	REVISED -			CONTRACT NO. 72643				
	PLOT DATE : Mar-19-2014 11:58:42AM	DATE -	REVISED -			[ILLINOIS] FED. AID PROJECT				
Default				SCALE:      SHEET _ OF _ SHEETS    STA. _ TO STA. _						



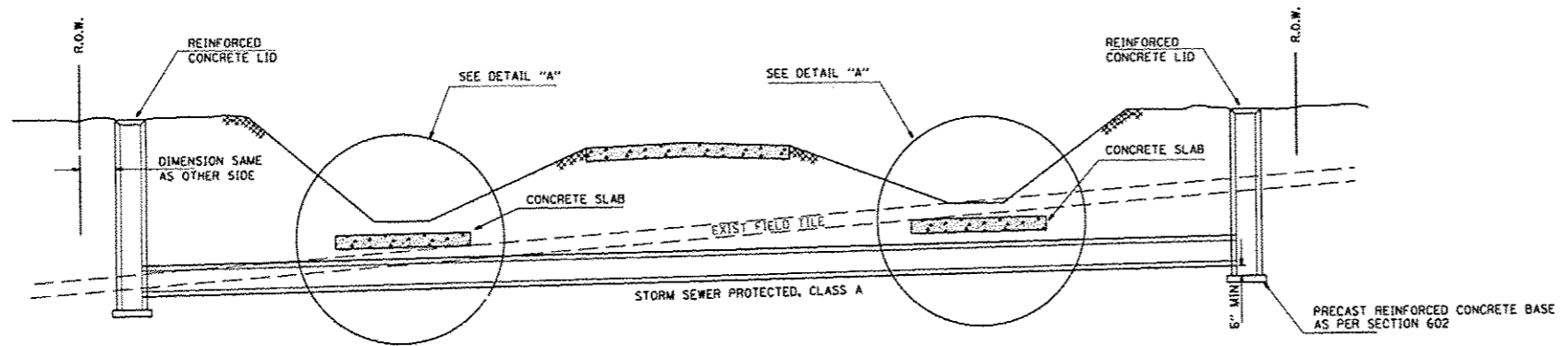
STATION

STA. 3+200.00

**LEGEND**

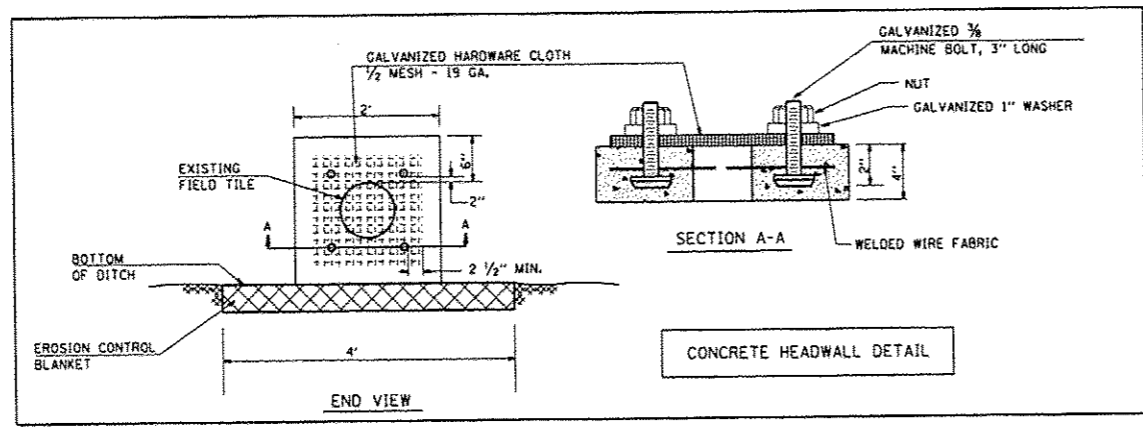
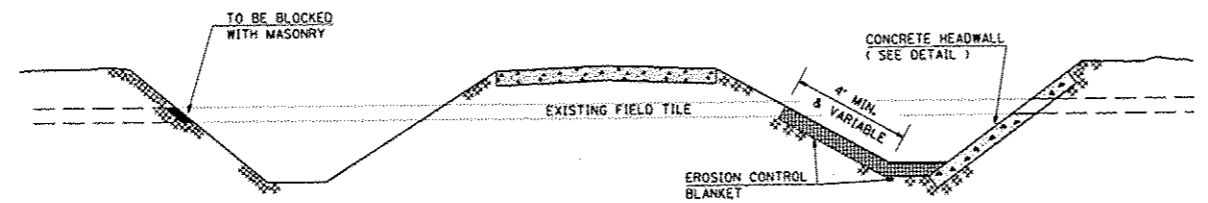
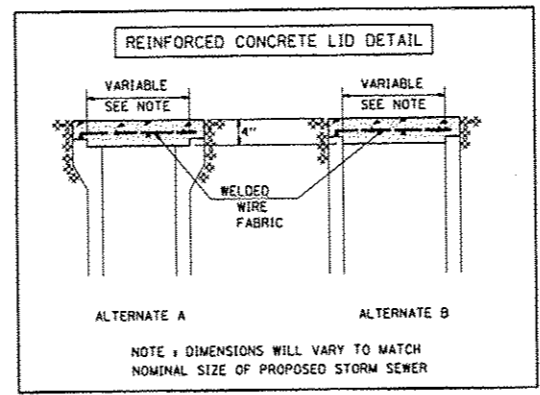
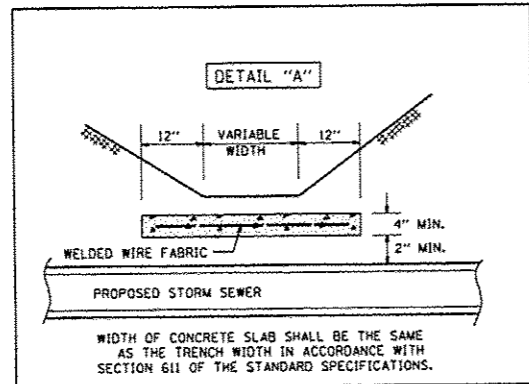
- ① EXIST. P.C.C. PAVEMENT 9-7-9"
- ② EXIST. BIT. CONC. WIDENING 8"
- ③ EXIST. BIT. CONC. OVERLAY 2"
- ④ EXIST. BIT. CONC. SURF. CSE., MIX. D, CL. I, TYPE 2 1/2"
- ⑤ EXIST. RAISED REF. PAVT. MARKERS
- ⑥ EXIST. AGG. SHOULDERS, TYPE B

FILE NAME * c:\pwork\pvidos\sharptd\0358729\0672543-sht-typical.dgn	USER NAME * sharptd	DESIGNED -	REVISED -	<b>STATE OF ILLINOIS DEPARTMENT OF TRANSPORTATION</b>	<b>TYPICAL SECTION</b>		F.A.P. RTE.	SECTION	COUNTY	TOTAL SHEETS	SHEET NO.	
	PLOT SCALE * 3/8" = 1'	CHECKED -	REVISED -				612	(112) I-3	SCHUYLER	6	5	
SHT.PLAN	PLOT DATE * Mar-19-2014 12:00:33PM	DATE -	REVISED -		SCALE:	SHEET -	OF -1 SHEETS	STA.	TO STA.	ILLINOIS FED. AID PROJECT		
CONTRACT NO. 72G43												



GENERAL NOTES

1. FIELD TILE SHALL BE REPLACED IN ACCORDANCE WITH SECTION 611 OF THE STANDARD SPECIFICATIONS. THE COST PER CONTRACT UNIT PRICE OF ITEMS INCLUDED IN THIS CONTRACT SHALL BE PAID FOR AS STATED IN SECTION 611 OF THE STANDARD SPECIFICATIONS. IF THE CONTRACT UNIT PRICE IS NOT INCLUDED IN THIS CONTRACT, PAYMENT FOR THIS WORK WILL BE IN ACCORDANCE WITH ARTICLE 109.04 OF THE STANDARD SPECIFICATIONS.
2. THE DIAMETER OF THE PROPOSED STORM SEWER SHALL BE EQUAL TO OR GREATER THAN THE EXISTING FIELD TILE.
3. THE REINFORCED CONCRETE LID SHALL BE CLASS SI MISCELLANEOUS CONCRETE OR PRECAST REINFORCED CONCRETE.
4. FIELD TILES LESS THAN 7" DIAMETER INTERCEPTED BY THE BACKSLOPE SHALL BE CRUSHED AND REMAIN IN PLACE UNDER THE ROADBED. INTERCEPTED FIELD TILES 7" OR LARGER IN DIAMETER SHALL BE REMOVED AND BACKFILLED IN ACCORDANCE WITH ARTICLE 611.03.



FILE NAME *	USER NAME * sha-pla	DESIGNED -	REVISED -
c:\pwwork\p\idat\sherpla\0358724\25823\misc027.dgn		DRAWN -	REVISED -
	PLOT SCALE * 128.0028' / in.	CHECKED -	REVISED -
	PLOT DATE * Apr-21-2014 06:04:48AM	DATE -	REVISED -

**STATE OF ILLINOIS  
DEPARTMENT OF TRANSPORTATION**

<b>DETAILS</b>			
SCALE:	SHEET	OF	SHEETS
	1	1	
STA.		TO STA.	

F.A.P. RTE.	SECTION	COUNTY	TOTAL SHEETS	SHEET NO.
612	(112) 1-3	SCHUYLER	6	6
CONTRACT NO. 72643				
ILLINOIS FED. AID PROJECT				