

F.A. RTE.	SECTION	COUNTY	TOTAL SHEETS	SHEET NO.
VAR.		MORG/SANG	20	1
		ILLINOIS	CONTRACT NO. 72H00	

← D6 SPRING RD REP/DE MISC 2014

D-96-071-14



STATE OF ILLINOIS
DEPARTMENT OF TRANSPORTATION
DIVISION OF HIGHWAYS

**PROPOSED
HIGHWAY PLANS**

FAP 658 (OLD IL 29 /WALNUT ST),
FAU 8006 OVER FAI 72 (OLD IL 4/OLD CHATHAM RD), & FAP 10 (IL 267)
SECTION D6 SPRING RD REP/DE MISC 2014

**CURB & MEDIAN REPAIR, BRIDGE APPROACH &
PAVEMENT PATCHING, AND RESURFACING**
MORGAN & SANGAMON COUNTIES
C-96-071-14

INDEX OF SHEETS

- 1 COVER SHEET
- 2 GENERAL NOTES, MIXTURE TABLES
- 3-5 SUMMARY OF QUANTITIES
- 6,7 SCHEDULE OF QUANTITIES
- 8,9 TYPICAL CROSS SECTIONS
- 10,11 PLAN DETAILS, LOCATION #1
- 12-14 PLAN DETAILS, LOCATION #2
- 15-20 PLAN DETAILS, LOCATION #3

LIST OF HIGHWAY STANDARDS

000001-06	606301-04	701311-03
001001-02	606306-03	701602-07
001006	667101-02	701901-03
442001-04	701006-05	780001-04
442101-07	701011-04	781001-03
442201-03	701201-04	782001
606001-05	701306-03	BLR 21-9

LOCATION 1 (WALNUT ST)

ADT: 7800 (2012)
PV: 94.55%
SU: 3.85%
MU: 1.60%

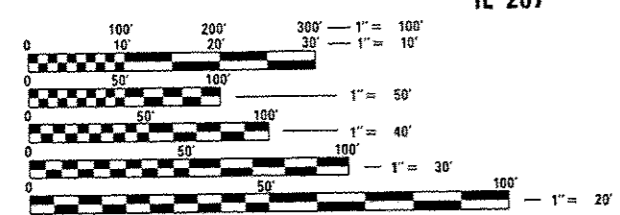
LOCATION 2 (OLD CHATHAM RD)

ADT: 8300 (2012)
PV: 96.45%
SU: 2.71%
MU: 0.84%

LOCATION 3 (IL 267)

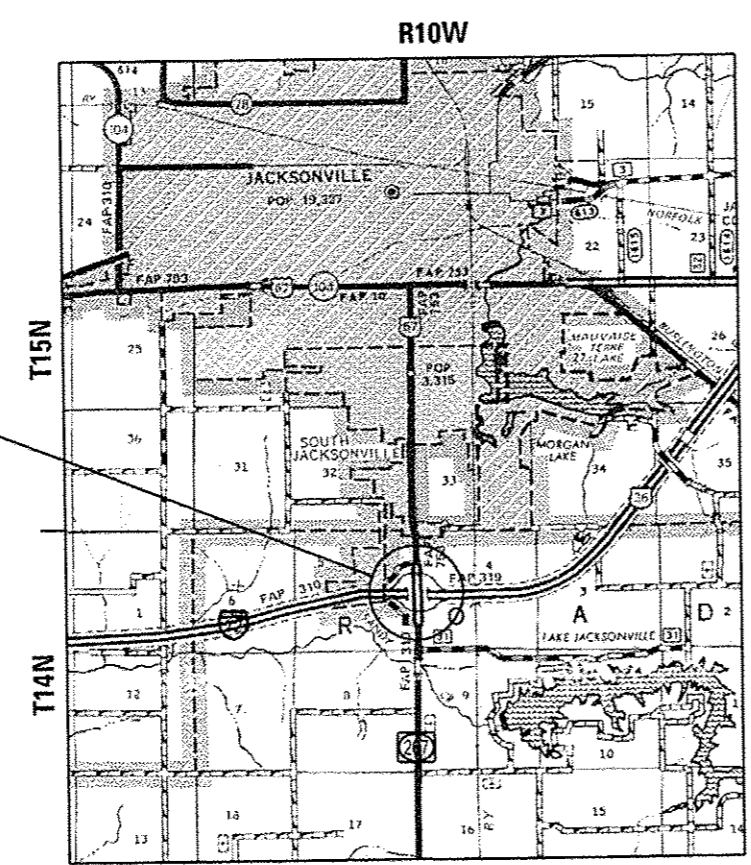
ADT: 7650 (2012)
PV: 89.74%
SU: 8.17%
MU: 2.09%

LOCATION #3
IL 267

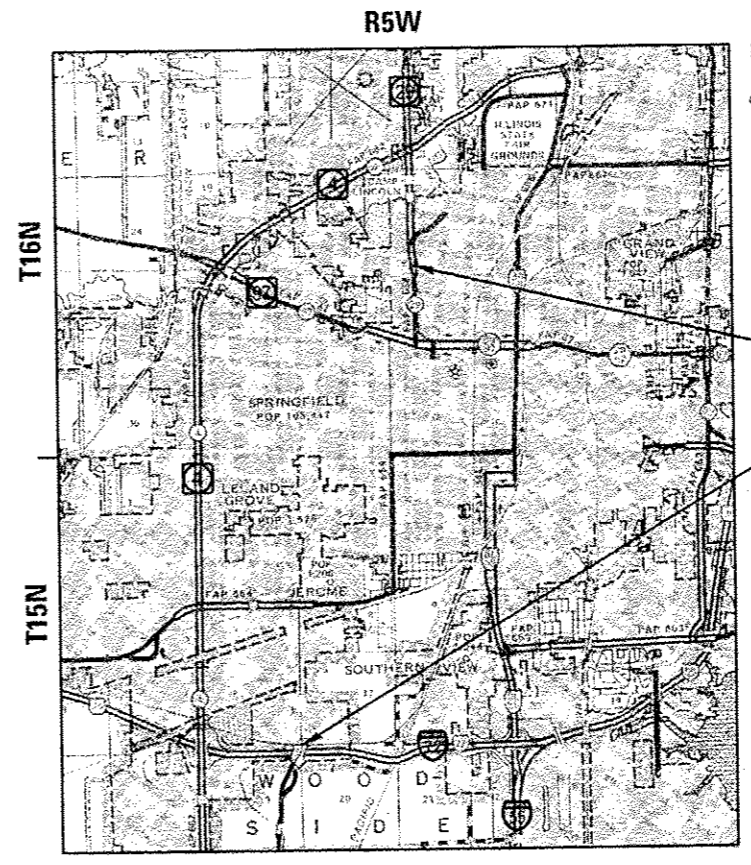


FULL SIZE PLANS HAVE BEEN PREPARED USING STANDARD ENGINEERING SCALES. REDUCED SIZED PLANS WILL NOT CONFORM TO STANDARD SCALES. IN MAKING MEASUREMENTS ON REDUCED PLANS, THE ABOVE SCALES MAY BE USED.

J.U.L.I.E.
JOINT UTILITY LOCATION INFORMATION FOR EXCAVATION
1-800-892-0123
OR 811



SOUTH JACKSONVILLE, MORGAN COUNTY



SPRINGFIELD, SANGAMON COUNTY

LOCATION #1
WALNUT ST

LOCATION #2
OLD CHATHAM RD

STATE OF ILLINOIS
DEPARTMENT OF TRANSPORTATION
DIVISION OF HIGHWAYS

SUBMITTED May 7 2014
Roger J. Driskell
DEPUTY DIRECTOR OF HIGHWAYS, REGION ENGINEER

May 9 2014
John D. Baranzelli, PE
ENGINEER OF DESIGN AND ENVIRONMENT

May 9 2014
Orin Osman, PE
DIRECTOR OF HIGHWAYS, CHIEF ENGINEER

PRINTED BY THE AUTHORITY
OF THE STATE OF ILLINOIS

PROJECT ENGINEER: VINCE MADONIA (217) 785-9046
PROJECT MANAGER: TIM SLAGLE (217) 785-5338

PROJECT LOCATION MAPS

CONTRACT NO. 72H00

THE FOLLOWING MIXTURE REQUIREMENTS ARE APPLICABLE FOR THIS PROJECT:

IL 267 LEVELING BINDER, 1"	
MIXTURE USE(S):	LEVELING BINDER
PG:	PG 64-22
DESIGN AIR VOIDS:	4.0% @ N70
MIXTURE COMPOSITION: (GRADATION MIXTURE)	IL 9.5
FRICTION AGGREGATE:	N/A
QUALITY MANAGEMENT:	OC/OA

IL 267 HMA SURFACE COURSE, 1 1/2"	
MIXTURE USE(S):	HMA SURFACE
PG:	SBS PG 70-22
DESIGN AIR VOIDS:	4.0% @ N70
MIXTURE COMPOSITION: (GRADATION MIXTURE)	IL 9.5
FRICTION AGGREGATE:	MIX "D"
QUALITY MANAGEMENT:	OC/OA

IL 267 HMA SHOULDERS (DEPTH = 1 1/2") IL 267 INCIDENTAL HMA SURFACING	
MIXTURE USE(S):	HMA SHOULDERS & INCIDENTAL HMA
PG:	PG 64-22
DESIGN AIR VOIDS:	4.0% @ N50
MIXTURE COMPOSITION: (GRADATION MIXTURE)	IL 9.5
FRICTION AGGREGATE:	MIX "C"
QUALITY MANAGEMENT:	OC/OA

IL 267 PATCHING	
MIXTURE USE(S):	PATCHING
PG:	PG 64-22
DESIGN AIR VOIDS:	4.0% @ N70
MIXTURE COMPOSITION: (GRADATION MIXTURE)	IL 19.0
FRICTION AGGREGATE:	N/A
QUALITY MANAGEMENT:	OC/OA

COMMITMENTS:

1. THE FIELD/RESIDENT ENGINEER SHALL CONTACT STUDIES AND PLANS COVERING ANY MAJOR PLAN CHANGES TO MAKE SURE NO PREVIOUS COMMITMENTS (NOT LISTED) WERE MADE AFFECTING THE DESIGN, AND TO ALLOW IMPROVED DESIGN FOR THE FUTURE.

OLD IL RTE. 4 LEVELING BINDER	
MIXTURE USE(S):	LEVELING BINDER
PG:	PG 64-22
DESIGN AIR VOIDS:	4.0% @ N50
MIXTURE COMPOSITION: (GRADATION MIXTURE)	IL 9.5
FRICTION AGGREGATE:	N/A

GENERAL NOTES:

1. ANY REFERENCE TO A STANDARD IN THESE PLANS SHALL BE INTERPRETED TO MEAN THE EDITION AS INDICATED BY THE SUB NUMBER LISTED IN THE INDEX OF SHEETS OR THE COPY OF THE STANDARD INCLUDED IN THESE PLANS.
2. IN ADDITION TO FIELD SURVEYS, PLAN DIMENSIONS AND DETAILS RELATIVE TO THE EXISTING FACILITIES HAVE BEEN TAKEN FROM EXISTING PLANS AND AERIAL PHOTOGRAPHY AND ARE SUBJECT TO CONSTRUCTION VARIATIONS. IT SHALL BE THE CONTRACTOR'S RESPONSIBILITY TO VERIFY SUCH DIMENSIONS AND DETAILS IN THE FIELD. SUCH VARIATIONS SHALL NOT BE A CAUSE FOR ADDITIONAL COMPENSATION DUE TO A CHANGE IN THE SCOPE OF WORK; HOWEVER, THE CONTRACTOR WILL BE PAID FOR THE QUANTITY ACTUALLY FURNISHED AT THE UNIT PRICE BID FOR THE WORK.
3. THE CONTRACTOR SHALL BE RESPONSIBLE FOR PROTECTING UTILITY PROPERTY FROM CONSTRUCTION OPERATIONS AS OUTLINED IN ARTICLE 107.31 OF THE STANDARD SPECIFICATIONS. THE J.U.L.I.E. NUMBER IS 1-800-892-0123. A MINIMUM OF 48 HOURS ADVANCE NOTICE IS REQUIRED.
4. THE THICKNESS OF HOT-MIX ASPHALT MIXTURES FOR PROPOSED HMA SHOULDERS SHOWN ON THE PLANS IS THE NOMINAL THICKNESS. DEVIATIONS FROM THE NOMINAL THICKNESS WILL BE PERMITTED WHEN SUCH DEVIATIONS OCCUR DUE TO IRREGULARITIES IN THE EXISTING SURFACE OR BASE ON WHICH THE HOT-MIX ASPHALT MIXTURE IS PLACED. THE CONSTRUCTED HMA SHOULDER THICKNESS SHALL NOT BE LESS THAN 95 PERCENT OF THE NOMINAL THICKNESS AT ANY LOCATION.
5. ALL SAW CUTS, NECESSARY TO COMPLETE THE WORK DETAILED IN THESE PLANS, SHALL BE INCLUDED IN THE COST FOR THE VARIOUS PAY ITEMS INVOLVED.
6. UNLESS DIRECTED BY THE ENGINEER, PAVEMENT MARKING EDGE LINES SHALL BE OFFSET APPROXIMATELY 2" FROM THE OUTER EDGES OF MAINLINE PAVEMENT. PAVEMENT MARKING LINES ALONG THE EXISTING CONCRETE RAISED MEDIAN SHALL BE OFFSET APPROXIMATELY 12" FROM THE FACE OF MEDIAN CURB. SEE SECTION 780 OF THE STANDARD SPECIFICATIONS FOR TRAFFIC CONTROL ITEMS.
7. THE DISTRICT BUREAU OF OPERATIONS SHALL BE NOTIFIED AT LEAST 14 DAYS PRIOR TO THE PLACEMENT OF FINAL PAVEMENT MARKINGS. PHONE: (217)782-7314
8. THE FOLLOWING RATES OF APPLICATION HAVE BEEN USED TO CALCULATE THE PLAN QUANTITIES:
BITUMINOUS CONCRETE SHOULDERS 0.056 TON/SQ. YD. PER 1" THICKNESS
AGRICULTURAL GROUND LIMESTONE 2.00 TONS / ACRE
9. ANY EXISTING ROAD SIGNS THAT INTERFERE WITH CONSTRUCTION SHALL BE RELOCATED AS DIRECTED BY THE ENGINEER. AFTER CONSTRUCTION IS COMPLETE, THE CONTRACTOR SHALL REPLACE THE SIGNS AS DIRECTED BY THE ENGINEER. THIS WORK SHALL NOT BE PAID FOR SEPARATELY, BUT CONSIDERED TO BE INCLUDED IN THE CONTRACT'S OVERALL BID PRICE.
10. ANY EXISTING CONCRETE CURB MATERIAL UPON REMOVAL FOR REPAIR SHALL BE DISPOSED OF OUTSIDE THE LIMITS OF RIGHT-OF-WAY ACCORDING TO ARTICLE 202.03 OF THE STANDARD SPECIFICATIONS AND AS DIRECTED BY THE ENGINEER. THIS WORK WILL NOT BE PAID FOR SEPARATELY BUT SHALL BE CONSIDERED INCLUDED IN THE CONTRACT UNIT BID PRICE FOR CONCRETE CURB REPAIR. NO ADDITIONAL COMPENSATION WILL BE ALLOWED.
11. WHERE SECTION OR SUB-SECTION MARKERS ARE ENCOUNTERED, THE ENGINEER SHALL BE NOTIFIED BEFORE SUCH MONUMENTS ARE REMOVED. THE CONTRACTOR SHALL PROTECT AND CAREFULLY PRESERVE ALL PROPERTY MARKERS AND MONUMENTS UNTIL THE OWNER, AN AUTHORIZED AGENT OR LAND SURVEYOR HAS WITNESSED OR OTHERWISE REFERENCED THEIR LOCATION.

DISTRICT SIX	
EXAMINED	May 7 20 14 <i>[Signature]</i> OPERATIONS ENGINEER
EXAMINED	MAY 7 20 14 <i>[Signature]</i> PROJECT IMPLEMENTATION ENGINEER
EXAMINED	May 7 20 14 <i>[Signature]</i> PROGRAM DEVELOPMENT ENGINEER

CODE NO.	ITEM	UNIT	TOTAL QUANTITY	SANGAMON COUNTY		MORGAN COUNTY			
				FAP 058	FAU 8006	FAP 10			
				CONSTRUCTION CODE				SEO 1	SEO 2
				IL 29/WALNUT ST ROADWAY	OLD IL 4 ROADWAY	IL 267 ROADWAY	IL 267 ROADWAY		
				0005	0005	0005	0005		
				URBAN	URBAN	URBAN	URBAN		
				07A0L101	07A0L101	07A0L102	07A0L103		
20200100	EARTH EXCAVATION	CU YD	20			20			
40600525	LEVELING BINDER (HAND METHOD), N50	TON	1		1				
40600200	BITUMINOUS MATERIALS (PRIME COAT)	TON	2.9				2.9		
40600300	AGGREGATE (PRIME COAT)	TON	16.7				16.7		
40600635	LEVELING BINDER (MACHINE METHOD), N70	TON	468				468		
40600982	HOT-MIX ASPHALT SURFACE REMOVAL - BUTT JOINT	SQ YD	360				360		
40600990	TEMPORARY RAMP	SQ YD	133				133		
40603540	POLYMERIZED HOT-MIX ASPHALT SURFACE COURSE, MIX "D", N70	TON	701				701		
40800050	INCIDENTAL HOT-MIX ASPHALT SURFACING	TON	7				7		
44000500	COMBINATION CURB AND GUTTER REMOVAL	FOOT	178			178			
44200132	PAVEMENT PATCHING, TYPE II, 11 INCH	SQ YD	65				65		
44200136	PAVEMENT PATCHING, TYPE III, 11 INCH	SQ YD	80				80		
44200138	PAVEMENT PATCHING, TYPE IV, 11 INCH	SQ YD	95				95		
48203100	HOT-MIX ASPHALT SHOULDERS	TON	356				356		

SEO 1
PPS 6-00763-0000

SEO 2
PPS 6-00345-0000

* D6 SPRING RD REP/DE MISC 2014

CODE NO.	ITEM	UNIT	TOTAL QUANTITY	SANGAMON COUNTY		MORGAN COUNTY			
				FAP 658	FAU B006	FAP 10			
				CONSTRUCTION CODE				SEQ 1	SEQ 2
				IL 29/WALNUT ST ROADWAY	OLD IL 4 ROADWAY	IL 267 ROADWAY	IL 267 ROADWAY		
				0005	0005	0005	0005		
				URBAN	URBAN	URBAN	URBAN		
60622400	CONCRETE MEDIAN, TYPE SM-6.06	SO FT	571			571			
60624600	CORRUGATED MEDIAN	SO FT	121	121					
67100100	MOBILIZATION	L SUM	1	0.25	0.25	0.25	0.25		
70100450	TRAFFIC CONTROL AND PROTECTION, STANDARD 701201	L SUM	1			0.25	0.75		
70100460	TRAFFIC CONTROL AND PROTECTION, STANDARD 701306	L SUM	1			0.25	0.75		
70102632	TRAFFIC CONTROL AND PROTECTION, STANDARD 701602	L SUM	1	1					
70300100	SHORT TERM PAVEMENT MARKING	FOOT	370				370		
70301000	WORK ZONE PAVEMENT MARKING REMOVAL	SO FT	62				62		
* 78000300	THERMOPLASTIC PAVEMENT MARKING - LINE 5"	FOOT	9001				9001		
* 78000400	THERMOPLASTIC PAVEMENT MARKING - LINE 6"	FOOT	540				540		
* 78000500	THERMOPLASTIC PAVEMENT MARKING - LINE 8"	FOOT	156				156		
* 78000600	THERMOPLASTIC PAVEMENT MARKING - LINE 12"	FOOT	65				65		
* 78004200	PREFORMED PLASTIC PAVEMENT MARKING, TYPE B - INLAID - LETTERS AND SYMBOLS	SO FT	94				94		
* 78004240	PREFORMED PLASTIC PAVEMENT MARKING, TYPE B - INLAID - LINE 8"	FOOT	36				36		

SEQ 1
PPS 6-00763-0000

SEQ 2
PPS 6-00345-0000

* SPECIALTY ITEM

* D6 SPRING RD REP/DE MISC 2014

FILE NAME =	USER NAME = sparkagw	DESIGNED -	REVISED -	STATE OF ILLINOIS DEPARTMENT OF TRANSPORTATION	SUMMARY OF QUANTITIES		F.A. RTE.	SECTION	COUNTY	TOTAL SHEETS	SHEET NO.	
c:\pe\work\p\p\dot\sparkagw\0307623\0672400-441-S08.dgn	DRAWN -	REVISED -	VAR.					MORG/SANG	20	4		
PLOT SCALE = 100.0000 / in	CHECKED -	REVISED -			SCALE:		SHEET 2 OF 3 SHEETS	STA.	TO STA.	CONTRACT NO. 72H00		
Default	PLOT DATE = May-07-2014 10:06:35AM	DATE -	REVISED -		ILLINOIS FED. AID PROJECT							

CODE NO.	ITEM	UNIT	TOTAL QUANTITY	SANGAMON COUNTY		MORGAN COUNTY			
				FAP 05B	FAU 8006	FAP 10			
				CONSTRUCTION CODE				SEQ 1	SEQ 2
				IL 29/WALNUT ST ROADWAY 0005 URBAN	OLD IL 4 ROADWAY 0005 URBAN	IL 267 ROADWAY 0005 URBAN	IL 267 ROADWAY 0005 URBAN		
			100% STATE						
* 78004280	PREFORMED PLASTIC PAVEMENT MARKING, TYPE B - INLAID - LINE 24"	FOOT	36				36		
* 78100100	RAISED REFLECTIVE PAVEMENT MARKER	EACH	107				107		
* 78200300	PRISMATIC CURB REFLECTOR	EACH	11			11			
78300200	RAISED REFLECTIVE PAVEMENT MARKER REMOVAL	EACH	100				100		
X4401198	HOT-MIX ASPHALT SURFACE REMOVAL, VARIABLE DEPTH	SO YD	12298				12298		
X4402020	CONCRETE MEDIAN SURFACE REMOVAL	SO FT	395			395			
X6060500	CORRUGATED MEDIAN REMOVAL	SO FT	121	121					
X7010222	TRAFFIC CONTROL AND PROTECTION, STANDARD BLR 21 (SPECIAL)	L SUM	1		1				
X7015005	CHANGEABLE MESSAGE SIGN	CAL DA	14		14				
Z0001800	APPROACH SLAB REPAIR (PARTIAL DEPTH)	SO YD	24		24				
Z0012500	CONCRETE CURB REPAIR	FOOT	170	90			80		

SEQ 1
PPS 6-00763-0000

SEQ 2
PPS 6-00345-0000

* SPECIALTY ITEM

IL 267 PAVEMENT RESURFACING (MAINLINE AND SHOULDERS)												
LOCATION			SURFACE DISTANCE	HMA SURFACE REMOVAL, VARIABLE DEPTH (SHOULDERS)	HMA SURFACE REMOVAL, VARIABLE DEPTH (MAINLINE PAVEMENT)	HMA SURFACE REMOVAL, BUTT JOINT	INCIDENTAL HMA SURFACING (AVG. DEPTH = 1.5")	LEVELING BINDER (MACHINE METHOD), N70 (DEPTH = 1")	POLYMER HMA SURF. COURSE, MIX "D", N70 (DEPTH 1.5")	HMA SHOULDERS (DEPTH = 1.5")	AGGREGATE PRIME COAT	BITUMINOUS MATERIALS (PRIME COAT)
				X4401198	X4401198	40600982	40800050	40600635	40603540	48203100	40600300	40600200
STATION	TO	STATION	(FOOT)	(SQUARE YARD)	(SQUARE YARD)	(SQUARE YARD)	(TON)	(TON)	(TON)	(TON)	(TON)	(TON)
IL 267, NORTHBOUND LANES												
101+24.67	TO	101+34.67	10.00			43.3		2.4	3.6		0.09	0.02
101+34.67	TO	105+50.00	415.33	466.7	1,093.5			61.2	91.9	39.2	2.19	0.42
105+50.00	TO	106+02.29	52.29	53.3	86.4			4.8	7.3	4.5	0.17	0.03
106+02.29	TO	106+12.29	10.00			25.7		1.4	2.2		0.05	0.01
BRIDGE OMISSION												
108+67.00	TO	108+77.00	10.00			25.8		1.4	2.2		0.05	0.01
108+77.00	TO	111+50.00	273.00	296.6	427.5			23.9	35.9	24.9	0.86	0.16
111+50.00	TO	117+50.00	600.00	568.8	997.0			55.8	83.7	47.8	1.99	0.38
117+50.00	TO	123+04.79	554.79	601.8	931.2			52.1	78.2	50.6	1.86	0.35
123+04.79	TO	123+14.79	10.00			25.4		1.4	2.1		0.05	0.01
IL 267 SOUTHBOUND LANES												
101+24.67	TO	101+34.67	10.00			25.7		1.4	2.2		0.05	0.01
101+34.67	TO	105+50.00	415.33	461.2	641.1			35.9	53.9	38.7	1.28	0.24
105+50.00	TO	106+02.29	52.29	55.8	82.1			4.6	6.9	4.7	0.16	0.03
106+02.29	TO	106+12.29	10.00			25.9		1.5	2.2		0.05	0.01
BRIDGE OMISSION												
108+67.00	TO	108+77.00	10.00			25.8		1.4	2.2		0.05	0.01
108+77.00	TO	111+50.00	273.00	306.2	622.4			34.9	52.3	25.7	1.24	0.24
111+50.00	TO	117+50.00	600.00	505.1	1,370.4			76.7	115.1	42.4	2.74	0.52
117+50.00	TO	123+04.79	554.79	601.1	845.5			47.3	71.0	50.5	1.69	0.35
123+14.79	TO	123+24.79	10.00			25.3		1.4	2.1		0.05	0.01
INTERCHANGE RAMP												
RAMP A				149.1	499.1			28.0	41.9	12.5	1.00	0.19
RAMP A BUTT JOINT						30.0		1.7	2.5		0.06	0.01
RAMP B				172.3	463.8			26.0	39.0	14.5	0.93	0.18
RAMP B BUTT JOINT						29.8		1.7	2.5		0.06	0.01
SIDE ROADS												
WOODS ROAD (STA. 121+61, RT.)						77.4	6.5					
OVERALL TOTALS =				4,238.0	8,060.0	360.1	6.5	467.2	700.8	356.0	16.69	2.85

IL 267 PAVEMENT MARKING													
PAVEMENT MARKING LOCATIONS (PLAN SHEETS, MATCH LINE TO MATCH LINE)			STATION TO STATION DISTANCE (FOOT)	THERMOPLASTIC PAVEMENT MARKING - LINE 5"		THPL PVMT MK - LINE 6"	THPL PVMT MK - LINE 8"	THPL PVMT MK - LINE 12"	PREF PL PVMT MK TY B - INLAID - LINE 24"	PREF PL PVMT MK TY B INLAID L&S	RAISED REFLECTIVE PAVEMENT MARKERS		RAISED REFLECTIVE PAVEMENT MARKER
				78000300		78000400	78000500	78000600	78004280	78004200	78100100		78300200
				WHITE (FOOT)	YELLOW (FOOT)	(FOOT)	(FOOT)	(FOOT)	(FOOT)	(SQ FT)	ONE-WAY CRYSTAL (EACH)	ONE-WAY AMBER (EACH)	(EACH)
IL 267 (INCLUDES BRIDGE, INTERCHANGE RAMP)													
101+14.67	TO	105+50.00	435.33	870.6	840.0	262.2				46.8	6	22	28
105+50.00	TO	111+50.00	600.00	1,200.0	1,201.0	21.7				15.6	1	16	17
111+50.00	TO	117+50.00	600.00	1,553.2	1,036.6	256.3	156.0	65.0	36.0	31.2	5	29	27
117+50.00	TO	123+24.79	574.79	1,150.1	1,149.6							28	28
SUBTOTALS =			2210.12	4,773.9	4,227.2	540.2	156.0	65.0	36.0	93.6	12	95	100
OVERALL TOTALS =				9,001.1		540.2	156.0	65.0	36.0	93.6	107		100

IL 267 TEMPORARY RAMPS				
LOCATION OF TEMPORARY RAMP	LENGTH OF RAMP	WIDTH OF RAMP	AREA OF RAMP	TEMPORARY RAMP
	(FOOT)	(FOOT)	(SQ FOOT)	40600990 (SQUARE YARD)
IL 267				
STA. 101+14.67	5.0	46	230.0	25.6
STA. 106+12.29 NORTHBOUND	5.0	14	70.0	7.8
STA. 106+12.29 SOUTHBOUND	5.0	14	70.0	7.8
STA. 108+67.00 NORTHBOUND	5.0	14	70.0	7.8
STA. 108+67.00 SOUTHBOUND	5.0	14	70.0	7.8
RAMP A (STA. 20+41.60)	5.0	16	80.0	8.9
RAMP B (STA. 1+48.24)	5.0	16	80.0	8.9
WOODS ROAD (STA. 121+61)	5.8	68	394.4	43.8
STA. 123+24.79	5.0	26	130.0	14.4
TOTALS =			1,194.4	132.7

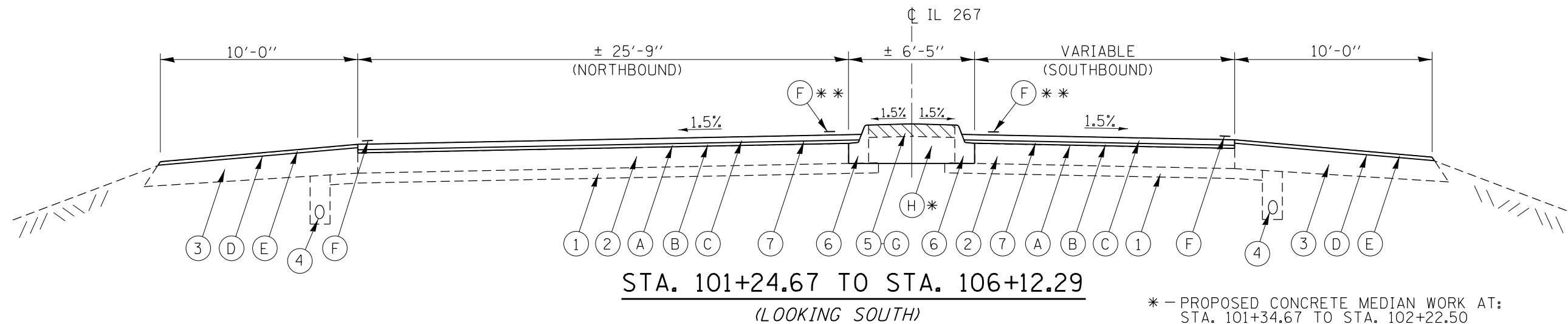
IL 267 SHORT TERM PAVEMENT MARKING / WORK ZONE PAVEMENT MARKING REMOVAL		
APPLICATIONS	SHORT TERM PAVEMENT MARKING	WORK ZONE PAVEMENT MARKING REMOVAL
	70300100	70301000
	WHITE (FOOT)	(4" LINE WIDTH) (SQUARE FOOT)
FIRST APPLICATION	185	0.0
SECOND APPLICATION	185	62.0
OVERALL TOTALS =	370	62

IL 267 PREFORMED PLASTIC PAVEMENT MARKING, TYPE B - INLAID - LINE 8"		
LOCATION OF PAVEMENT MARKING	MARKING TYPE	PREFORMED PLASTIC PAVEMENT MARKING, TYPE B - INLAID - LINE 8"
		78004240 (FOOT)
IL 267		
RAMP A	WRONG WAY ARROW	36.0
TOTALS =		36.0

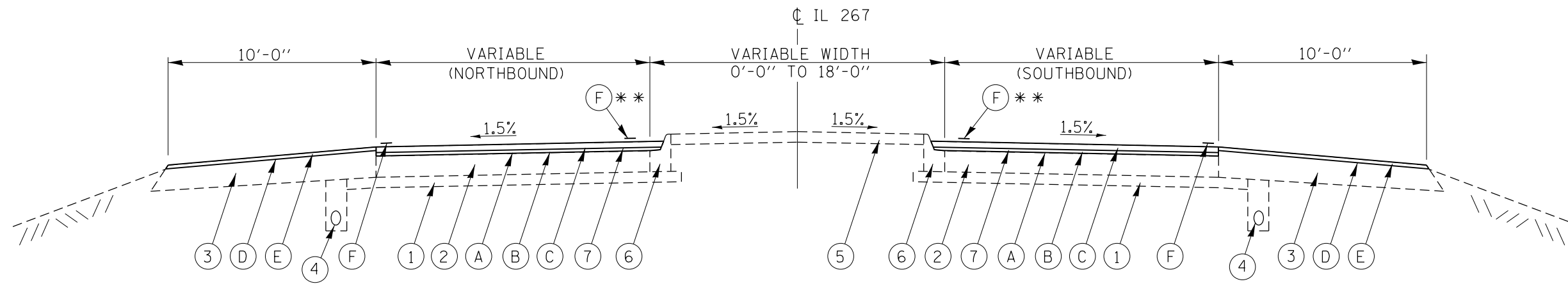
CONCRETE CURB REPAIR		
LOCATIONS		CONCRETE CURB REPAIR
		Z0012500 (FOOT)
SANGAMON COUNTY		
LOCATION #1, WALNUT ST., SPRINGFIELD	VARIOUS LOCATIONS AS DETERMINED BY THE ENGINEER	90.0
MORGAN COUNTY		
LOCATION #3, IL 267, SOUTH JACKSONVILLE	VARIOUS LOCATIONS AS DETERMINED BY THE ENGINEER	80.0
TOTALS =		170.0

IL 267 PAVEMENT PATCHING				
LOCATIONS		PAVEMENT PATCHING, TYPE II, 11 INCH	PAVEMENT PATCHING, TYPE III, 11 INCH	PAVEMENT PATCHING, TYPE IV, 11 INCH
		44200132 (SQ YD)	44200136 (SQ YD)	44200138 (SQ YD)
MORGAN COUNTY				
LOCATION #3, IL 267, SOUTH JACKSONVILLE	VARIOUS LOCATIONS AS DETERMINED BY THE ENGINEER	65.0	80.0	95.0
TOTALS =		65.0	80.0	95.0

NOTE:
FOR LOCATIONS OF VARIOUS ITEMS PROPOSED FOR LOCATION #1, SEE SHEET 11, BILL OF MATERIALS.
FOR LOCATIONS OF VARIOUS ITEMS PROPOSED FOR LOCATION #2, SEE SHEET 12, BILL OF MATERIALS.



* - PROPOSED CONCRETE MEDIAN WORK AT:
STA. 101+34.67 TO STA. 102+22.50
** - PROPOSED PAVEMENT STRIPE PLACED
1'-0" FROM FACE OF CURB

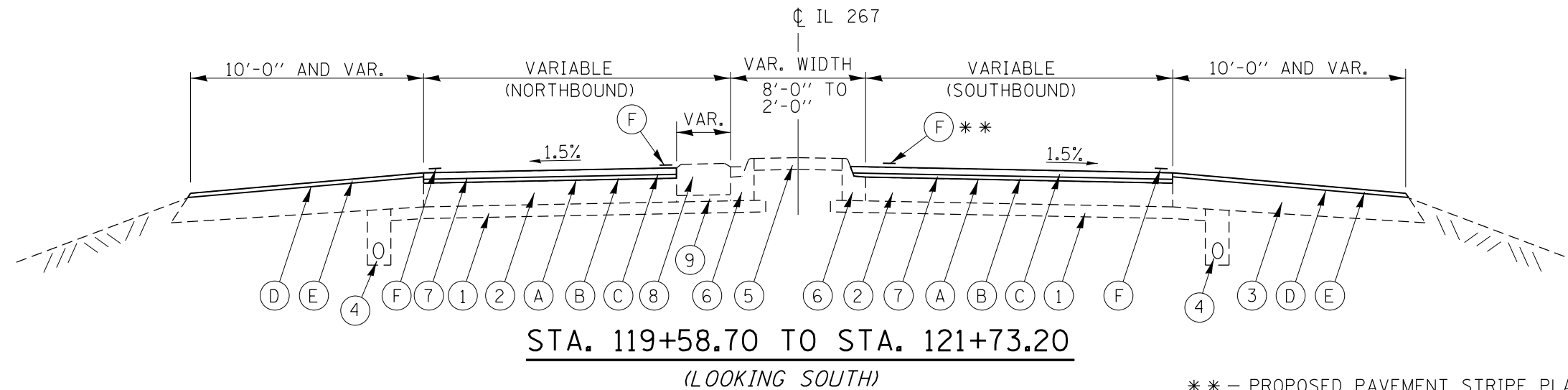


BRIDGE OMISSION:
STA. 106+12.29 TO STA. 108+67.00
STA. 108+67.00 TO STA. 119+58.70
STA. 121+73.20 TO STA. 123+24.79
(LOOKING SOUTH)

NOTE:
THE TYPICAL CROSS SECTIONS ON
THIS SHEET AND SHEET 9 ARE FOR
LOCATION #3, IL 267, IN MORGAN
COUNTY.

LEGEND

① EXISTING STABILIZED SUBBASE, 4"	⑥ EXISTING COMB. CONC. C & G, TYPE M-6.06	Ⓐ PROPOSED HMA SURFACE REMOVAL, VARIABLE DEPTH (MAINLINE, 2 1/2")
② EXISTING PCC PAVEMENT, 8"	⑦ EXISTING HMA SURFACE (DEPTH = 2 1/2")	Ⓑ PROPOSED LEVELING BINDER (MACHINE METHOD), N70, 1"
③ EXISTING STABILIZED HMA SHOULDER (DEPTH = 10 1/2" @ E.O.P. TO 9 1/2" @ OUTSIDE OF SHOULDER)	⑧ EXISTING CONCRETE CORRUGATED MEDIAN, ± 8"	Ⓒ PROPOSED HMA SURFACE COURSE, MIX "D", N70, 1 1/2"
④ EXISTING PIPE UNDERDRAIN	⑨ EXISTING SUBBASE GRANULAR MATERIAL, 2 1/4"	Ⓓ PROPOSED HMA SURFACE REMOVAL, VARIABLE DEPTH (SHOULDERS, 1 1/2")
⑤ EXISTING CONCRETE MEDIAN SURFACE, 4"		Ⓔ PROPOSED HMA SHOULDERS (DEPTH = 1 1/2")
		Ⓕ PROPOSED THERMOPLASTIC PAVEMENT MARKING - LINE 5"
		Ⓖ PROPOSED COMBINATION CONCRETE MEDIAN SURFACE REMOVAL
		Ⓗ PROPOSED CONCRETE MEDIAN TYPE SM-6.06

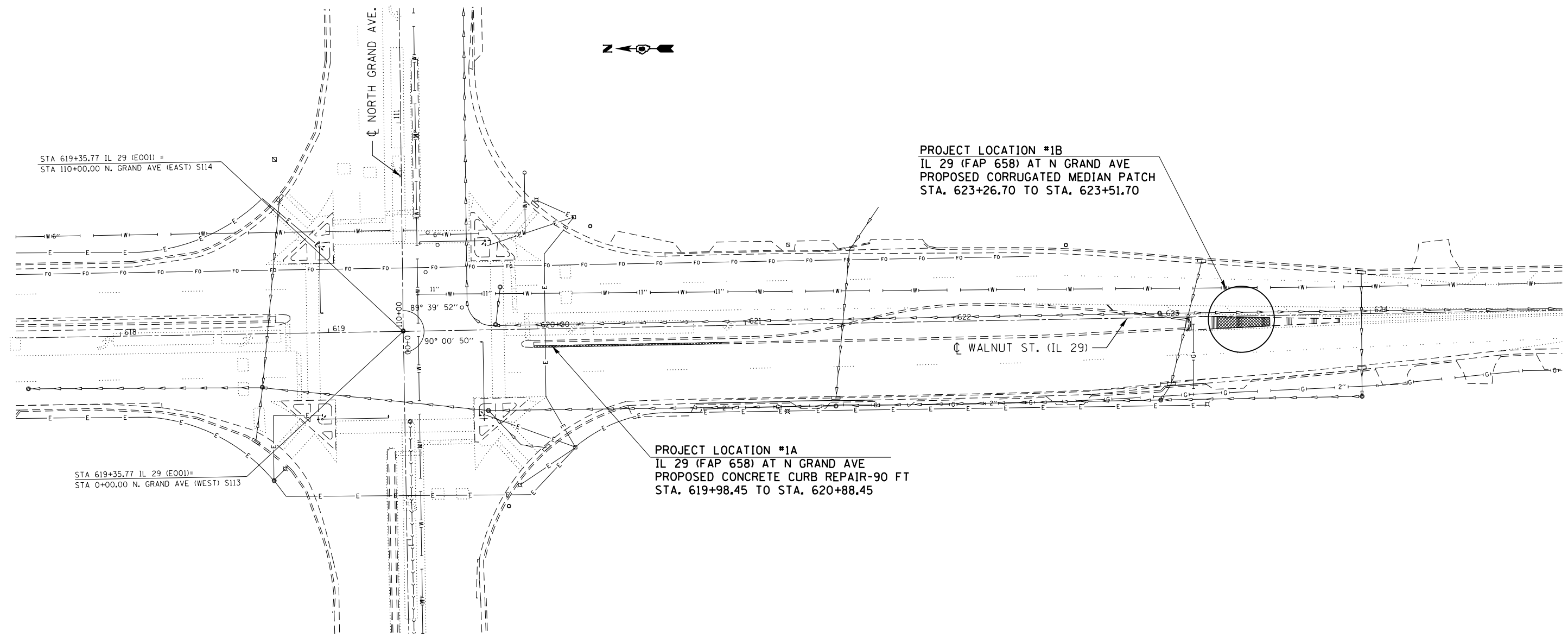


** - PROPOSED PAVEMENT STRIPE PLACED 1'-0" FROM FACE OF CURB

NOTE:
THE TYPICAL CROSS SECTION ON THIS SHEET AND THOSE ON SHEET 8 ARE FOR LOCATION #3, IL 267, IN MORGAN COUNTY.

LEGEND

- | | | |
|--|--|---|
| <p>① EXISTING STABILIZED SUBBASE, 4"</p> <p>② EXISTING PCC PAVEMENT, 8"</p> <p>③ EXISTING STABILIZED HMA SHOULDER
(DEPTH = 10 1/2" @ E.O.P. TO 9 1/2" @
OUTSIDE OF SHOULDER)</p> <p>④ EXISTING PIPE UNDERDRAIN</p> <p>⑤ EXISTING CONCRETE MEDIAN SURFACE, 4"</p> | <p>⑥ EXISTING COMB. CONC. C & G, TYPE M-6.06</p> <p>⑦ EXISTING HMA SURFACE (DEPTH = 2 1/2")</p> <p>⑧ EXISTING CONCRETE CORRUGATED MEDIAN, ± 8"</p> <p>⑨ EXISTING SUBBASE GRANULAR MATERIAL, 2 1/4"</p> | <p>Ⓐ PROPOSED HMA SURFACE REMOVAL, VARIABLE DEPTH (MAINLINE, 2 1/2")</p> <p>Ⓑ PROPOSED LEVELING BINDER (MACHINE METHOD), N70, 1"</p> <p>Ⓒ PROPOSED HMA SURFACE COURSE, MIX "D", N70, 1 1/2"</p> <p>Ⓓ PROPOSED HMA SURFACE REMOVAL, VARIABLE DEPTH (SHOULDERS, 1 1/2")</p> <p>Ⓔ PROPOSED HMA SHOULDERS (DEPTH = 1 1/2")</p> <p>Ⓕ PROPOSED THERMOPLASTIC PAVEMENT MARKING - LINE 5"</p> |
|--|--|---|



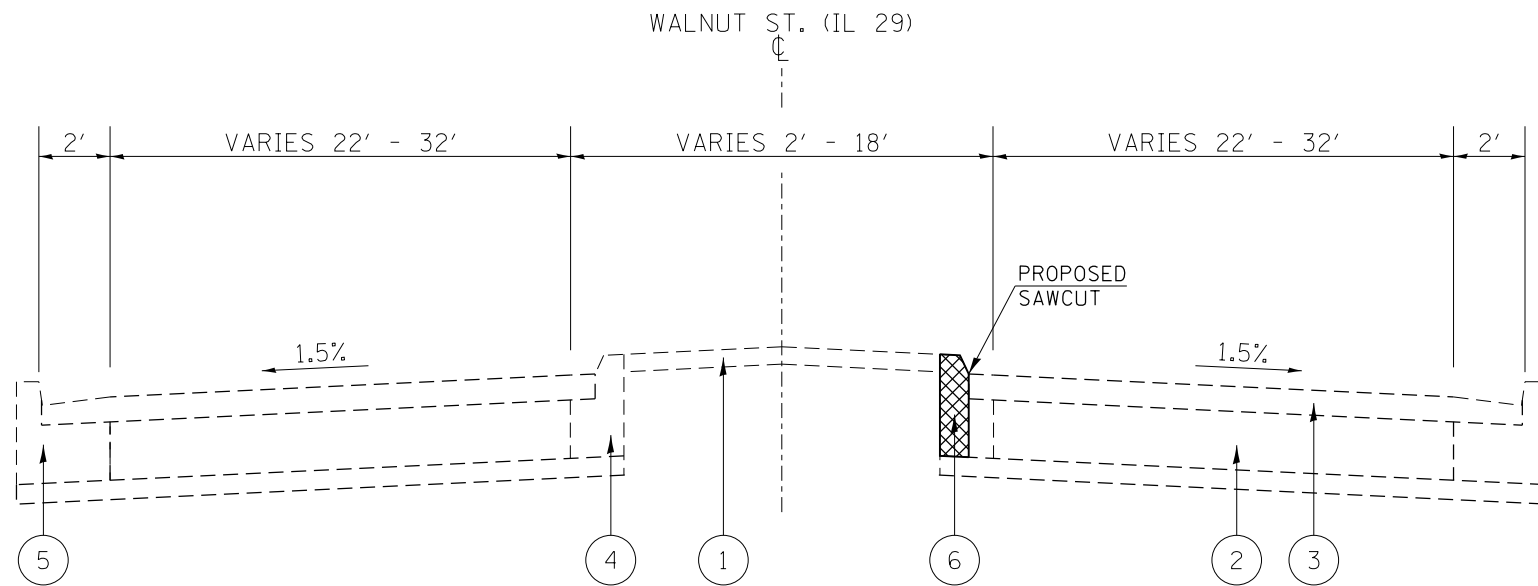
-- D6 SPRING RD REP/DE MISC 2014

FILE NAME =	USER NAME = sparksgw	DESIGNED -	RTS	REVISED -	
et:\pw\work\p\idot\sparksgw\10387623\0672H00-sht-plan.dgn		DRAWN -	RTS	REVISED -	
Default	PLOT SCALE = 40.0000' / in.	CHECKED -		REVISED -	
	PLOT DATE = May-07-2014 10:10:27AM	DATE -	11-25-13	REVISED -	

**STATE OF ILLINOIS
DEPARTMENT OF TRANSPORTATION**

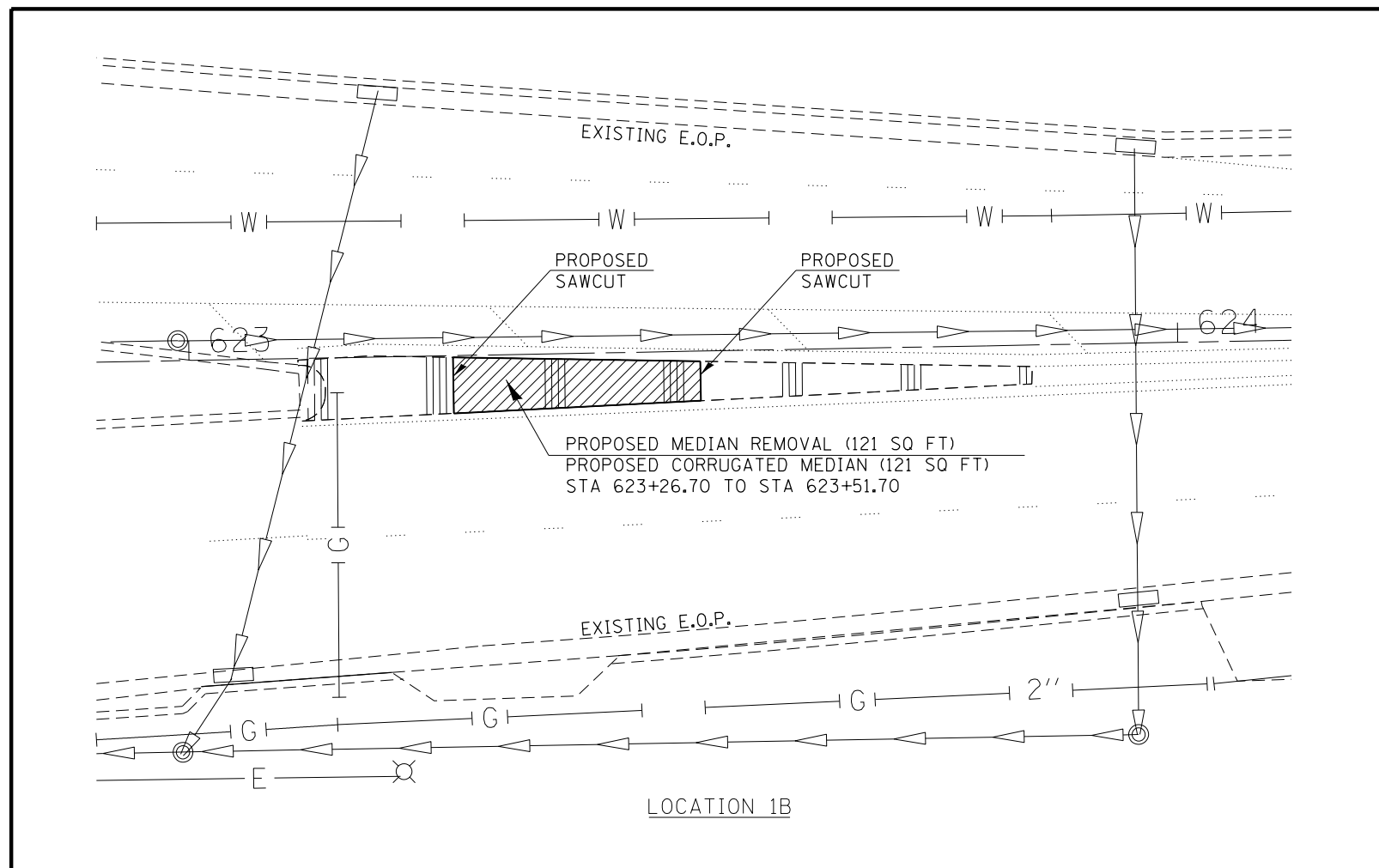
PLAN DETAILS LOCATION #1, IL RTE. 29			
SCALE:	SHEET 1	OF 2 SHEETS	STA. TO STA.

F.A. RTE.	SECTION	COUNTY	TOTAL SHEETS	SHEET NO.
VAR.	.	MORG/SANG	20	10
CONTRACT NO. 72H00				
ILLINOIS FED. AID PROJECT				



STA 619+02.70 TO STA 625+12.00
 STA 619+98.32 TO STA 621+15.00 - NORTHBOUND LEFT TURN LANE
 LOCATION 1A
 CONCRETE CURB REPAIR FROM STA 619+98.45 TO STA 620+88.45 (90 FT)

- LEGEND**
- ① EX CONCRETE MEDIAN SURFACE, 4"
 - ② EX PCC BASE COURSE 9"
 - ③ EX HOT-MIX ASPHALT SURFACE, 2 1/2"
 - ④ EX CONCRETE CURB & GUTTER M6.06
 - ⑤ EX CONCRETE CURB & GUTTER B 6.24
 - ⑥ PR CONCRETE CURB REPAIR



LOCATION 1B

BILL OF MATERIALS			
CODE #	ITEM	UNIT	QUANTITY
60624600	CORRUGATED MEDIAN	SQ FT	121
X6060500	CORRUGATED MEDIAN REMOVAL	SQ FT	121
Z0012500	CONCRETE CURB REPAIR	FOOT	90

-- D6 SPRING RD REP/DE MISC 2014

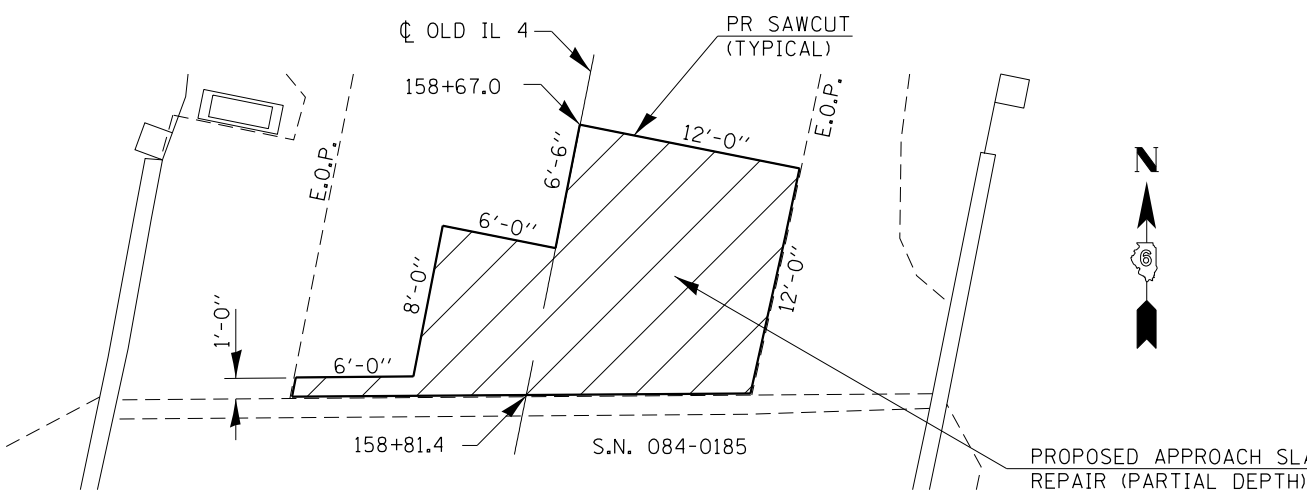
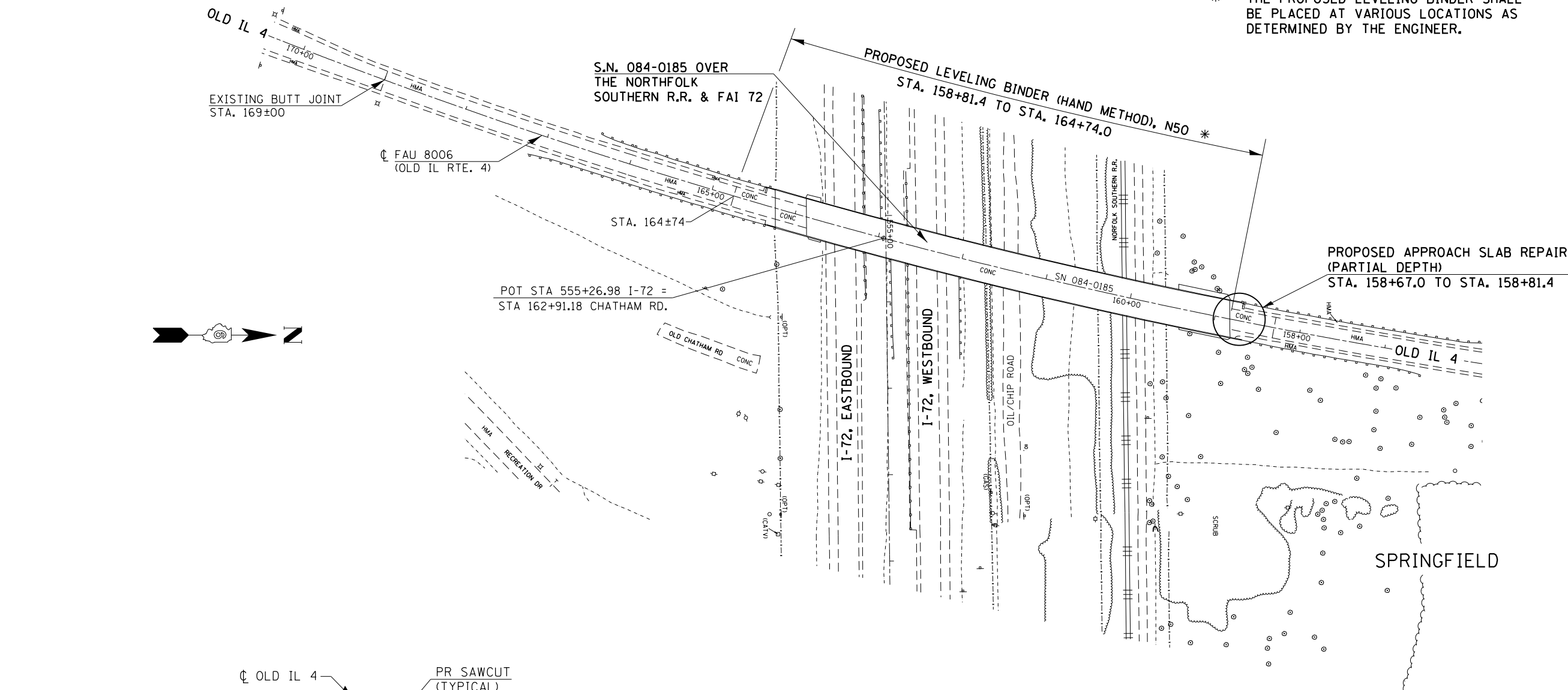
FILE NAME =	USER NAME = sparksgw	DESIGNED - RTS	REVISED -
		DRAWN - RTS	REVISED -
		CHECKED -	REVISED -
		DATE - 11-25-13	REVISED -

**STATE OF ILLINOIS
 DEPARTMENT OF TRANSPORTATION**

PLAN DETAILS			
LOCATION #1, IL RTE. 29			
SCALE:	SHEET 2	OF 2 SHEETS	STA. TO STA.

F.A. RTE.	SECTION	COUNTY	TOTAL SHEETS	SHEET NO.
VAR.	.	MORG/SANG	20	11
CONTRACT NO. 72H00			ILLINOIS FED. AID PROJECT	

* - THE PROPOSED LEVELING BINDER SHALL BE PLACED AT VARIOUS LOCATIONS AS DETERMINED BY THE ENGINEER.



**PLAN VIEW (NORTH SIDE OF S.N. 084-0185)
BRIDGE APPROACH SLAB REPAIR (PARTIAL DEPTH)**
(SEE SHEET 13 FOR APPROACH CROSS SECTION)

PROPOSED APPROACH SLAB REPAIR (PARTIAL DEPTH)
23.2 SQ YD
* *

* * - THE DEPTH OF PROPOSED SLAB REPAIR SHALL BE 1" MINIMUM BELOW THE TOP REINFORCEMENT MATTING. PROPOSED SLAB REPAIR SHALL NOT EXCEED 6" MAXIMUM.

BILL OF MATERIALS			
CODE #	ITEM	UNIT	QUANTITY
Z0001800	APPROACH SLAB REPAIR (PARTIAL DEPTH)	SQ YD	23.2
40600525	LEVELING BINDER (HAND METHOD), N50	TON	1.0 *

-- D6 SPRING RD REP/DE MISC 2014

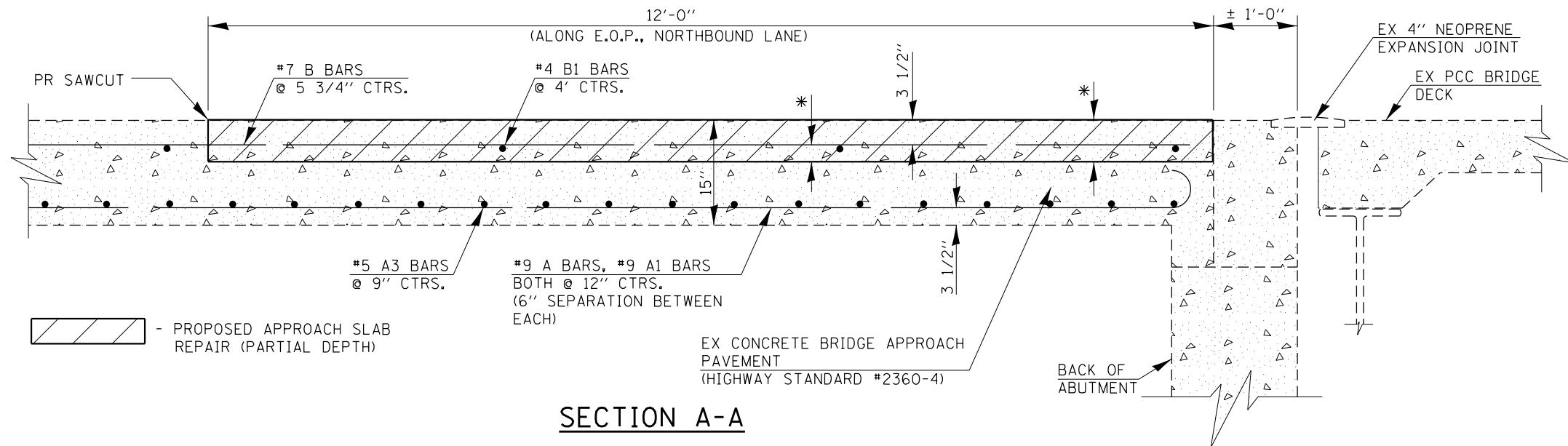
FILE NAME =	USER NAME = sparksgw	DESIGNED - RTS	REVISED -
et:\pw\work\p\id\sparksgw\10387623\067PH00-sht-plan.dgn		DRAWN - RTS	REVISED -
Default	PLOT SCALE = 40.0000' / in.	CHECKED -	REVISED -
	PLOT DATE = May-07-2014 10:10:28AM	DATE - 11-25-13	REVISED -

**STATE OF ILLINOIS
DEPARTMENT OF TRANSPORTATION**

**PROJECT DETAILS
LOCATION #2, OLD IL RTE. 4**

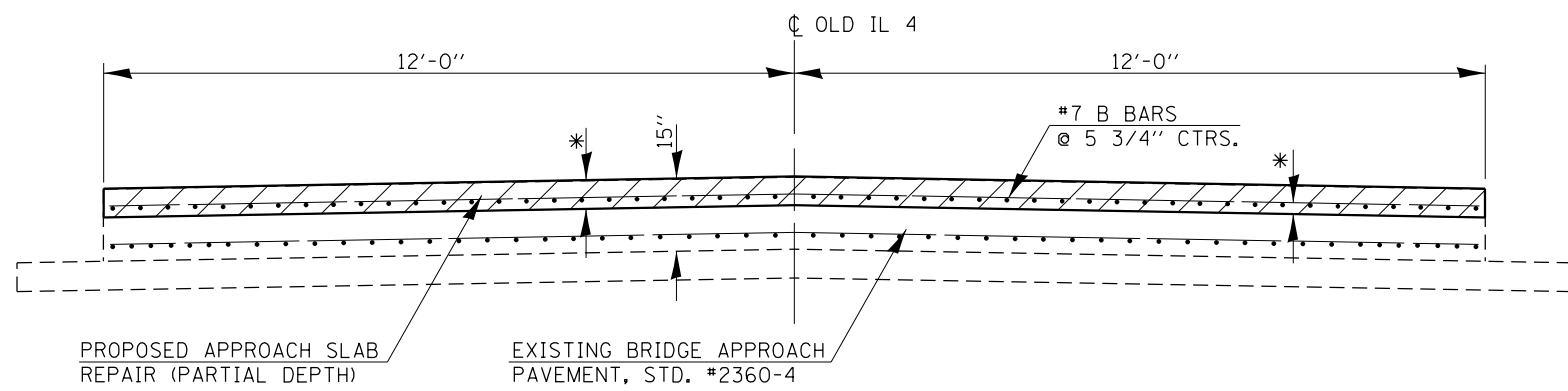
SCALE: SHEET 1 OF 3 SHEETS STA. TO STA.

F.A. RTE.	SECTION	COUNTY	TOTAL SHEETS	SHEET NO.
VAR.	.	MORG/SANG	20	12
CONTRACT NO. 72H00			ILLINOIS FED. AID PROJECT	



SECTION A-A

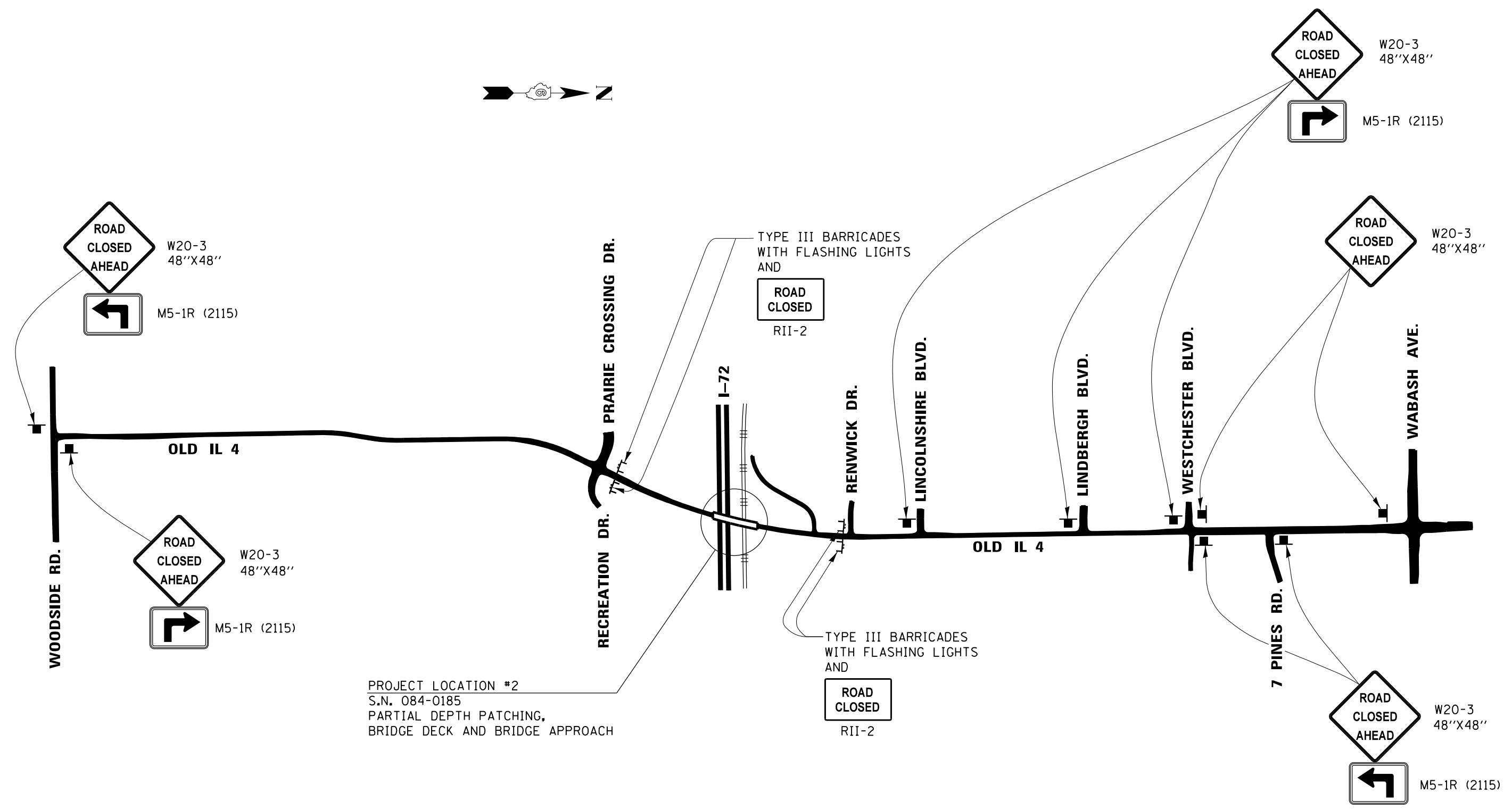
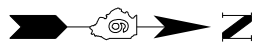
* - THE DEPTH OF PROPOSED SLAB REPAIR SHALL BE 1" MINIMUM BELOW THE TOP REINFORCEMENT MATTING. PROPOSED SLAB REPAIR SHALL NOT EXCEED 6" MAXIMUM.



APPROACH PAVEMENT CROSS SECTION

-- D6 SPRING RD REP/DE MISC 2014

FILE NAME = c:\pwwork\pwwork\sparksgw\10387623\0672H00-sht-plan.dgn	USER NAME = sparksgw	DESIGNED - RTS	REVISED -	STATE OF ILLINOIS DEPARTMENT OF TRANSPORTATION	PLAN DETAILS LOCATION #2, OLD IL RTE. 4			F.A. RTE.	SECTION	COUNTY	TOTAL SHEETS	SHEET NO.
	PLOT SCALE = 40.0000' / in.	CHECKED -	REVISED -					VAR.	.	MORG/SANG	20	13
Default	PLOT DATE = May-07-2014 10:10:28AM	DATE - 11-25-13	REVISED -	SCALE: SHEET 2 OF 3 SHEETS STA. TO STA.			CONTRACT NO. 72H00 ILLINOIS FED. AID PROJECT					



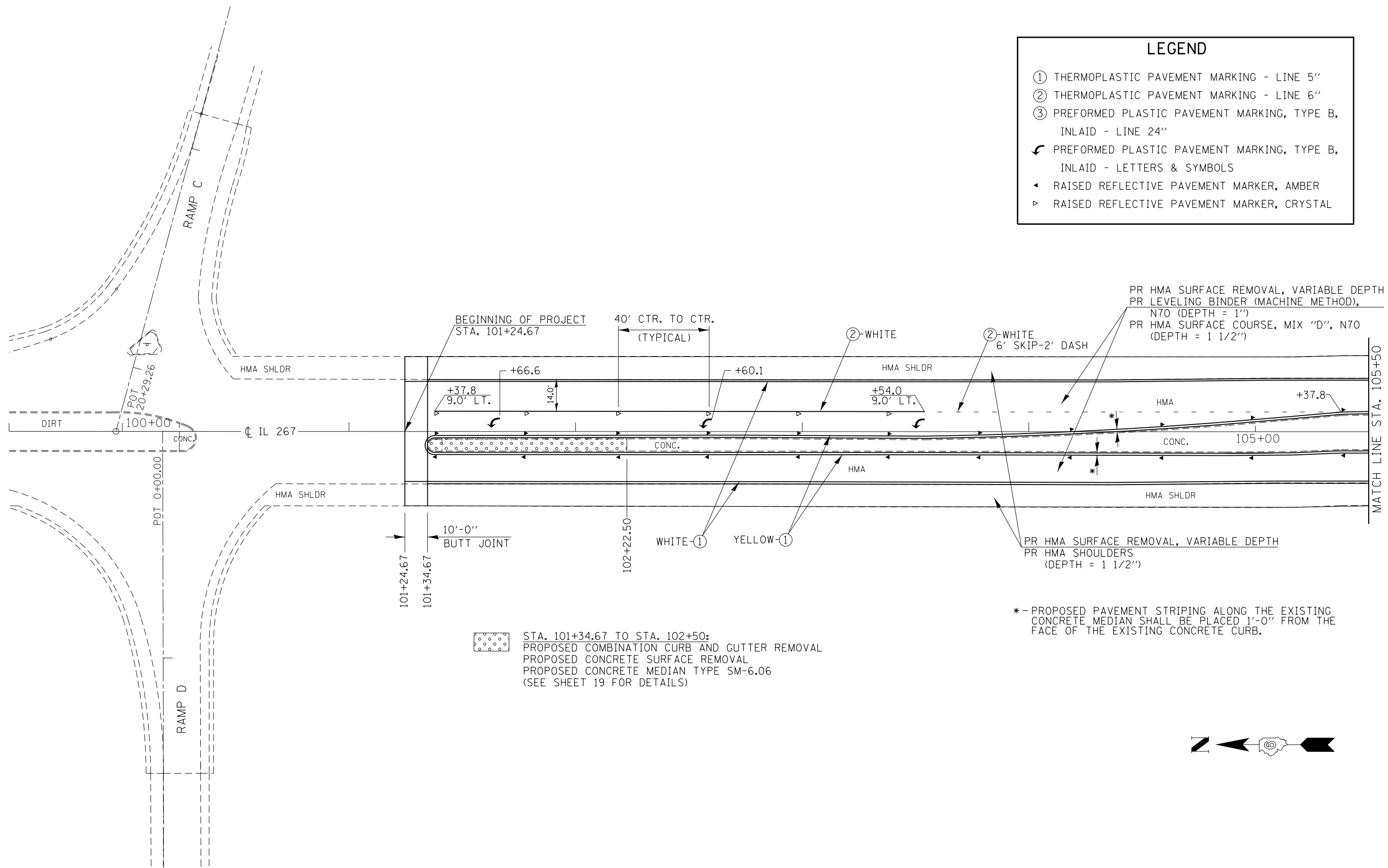
PROJECT LOCATION #2
 S.N. 084-0185
 PARTIAL DEPTH PATCHING,
 BRIDGE DECK AND BRIDGE APPROACH

NOTE:
 ADVANCED ROAD CLOSURE SIGNING AND TYPE III BARRICADES WILL NOT
 BE PAID FOR SEPARATELY BUT SHALL BE INCLUDED IN THE CONTRACT
 UNIT COSTS FOR TRAFFIC CONTROL AND PROTECTION STANDARD BLR-21.

-- D6 SPRING RD REP/DE MISC 2014

FILE NAME =	USER NAME = sparksgw	DESIGNED -	RTS	REVISED -		STATE OF ILLINOIS DEPARTMENT OF TRANSPORTATION	ROAD CLOSURE SIGNING LOCATION #2, OLD IL RTE. 4		F.A. RTE.	SECTION	COUNTY	TOTAL SHEETS	SHEET NO.
et:\pw\work\p\dot\sparksgw\10387623\0672H00-sht-plen.dgn	PH00-sht-plen.dgn	DRAWN -	RTS	REVISED -			VAR.	.	MORG/SANG	20	14		
Default	PLOT SCALE = 40.0000' / in.	CHECKED -		REVISED -					CONTRACT NO. 72H00		ILLINOIS FED. AID PROJECT		
	PLOT DATE = May-07-2014 10:10:28AM	DATE -	1-31-14	REVISED -			SCALE:	SHEET 3 OF 3 SHEETS	STA.	TO STA.			

LEGEND	
①	THERMOPLASTIC PAVEMENT MARKING - LINE 5"
②	THERMOPLASTIC PAVEMENT MARKING - LINE 6"
③	PREFORMED PLASTIC PAVEMENT MARKING, TYPE B, INLAID - LINE 24"
↙	PREFORMED PLASTIC PAVEMENT MARKING, TYPE B, INLAID - LETTERS & SYMBOLS
◀	RAISED REFLECTIVE PAVEMENT MARKER, AMBER
▷	RAISED REFLECTIVE PAVEMENT MARKER, CRYSTAL



*- PROPOSED PAVEMENT STRIPING ALONG THE EXISTING CONCRETE MEDIAN SHALL BE PLACED 1'-0" FROM THE FACE OF THE EXISTING CONCRETE CURB.



-- D6 SPRING RD REP/DE MISC 2014

FILE NAME =	USER NAME = sparksgw	DESIGNED - RTS	REVISED -
ci:\pw\work\p\idot\sparksgw\10387623\0672H00-sht-plan.dgn	PH00-sht-plan.dgn	DRAWN - RTS	REVISED -
Default	PLOT SCALE = 40.0000' / in.	CHECKED -	REVISED -
	PLOT DATE = May-07-2014 10:10:29AM	DATE - 04-07-14	REVISED -

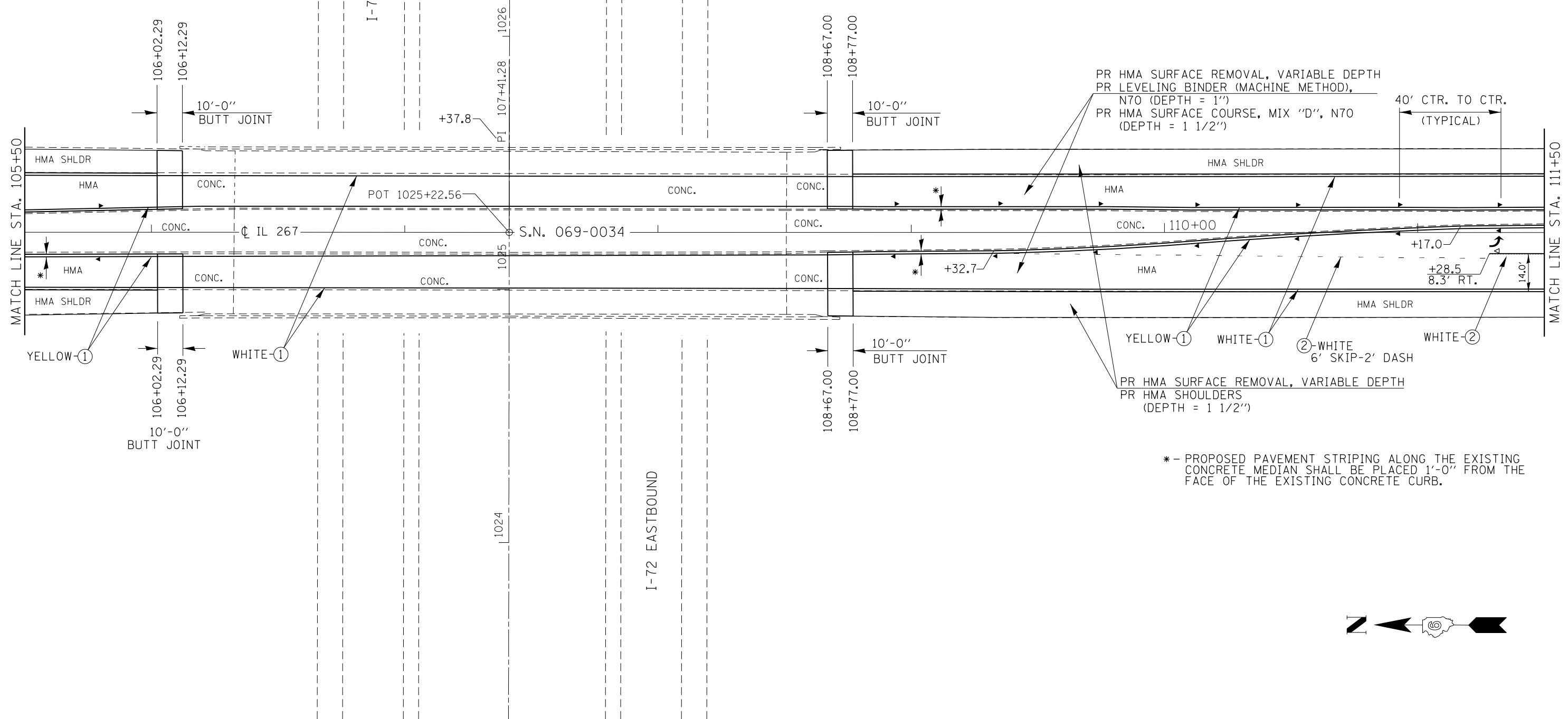
**STATE OF ILLINOIS
DEPARTMENT OF TRANSPORTATION**

PLAN DETAILS			
LOCATION #3, IL 267			
SCALE: 1:50	SHEET 1	OF 6 SHEETS	STA. TO STA.

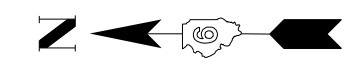
F.A. RTE.	SECTION	COUNTY	TOTAL SHEETS	SHEET NO.
VAR.	.	MORG/SANG	20	15
CONTRACT NO. 72H00				
ILLINOIS FED. AID PROJECT				

LEGEND

- ① THERMOPLASTIC PAVEMENT MARKING - LINE 5"
- ② THERMOPLASTIC PAVEMENT MARKING - LINE 6"
- ③ PREFORMED PLASTIC PAVEMENT MARKING, TYPE B, INLAID - LINE 24"
- ↶ PREFORMED PLASTIC PAVEMENT MARKING, TYPE B, INLAID - LETTERS & SYMBOLS
- ▲ RAISED REFLECTIVE PAVEMENT MARKER, AMBER
- ▷ RAISED REFLECTIVE PAVEMENT MARKER, CRYSTAL



* - PROPOSED PAVEMENT STRIPING ALONG THE EXISTING CONCRETE MEDIAN SHALL BE PLACED 1'-0" FROM THE FACE OF THE EXISTING CONCRETE CURB.

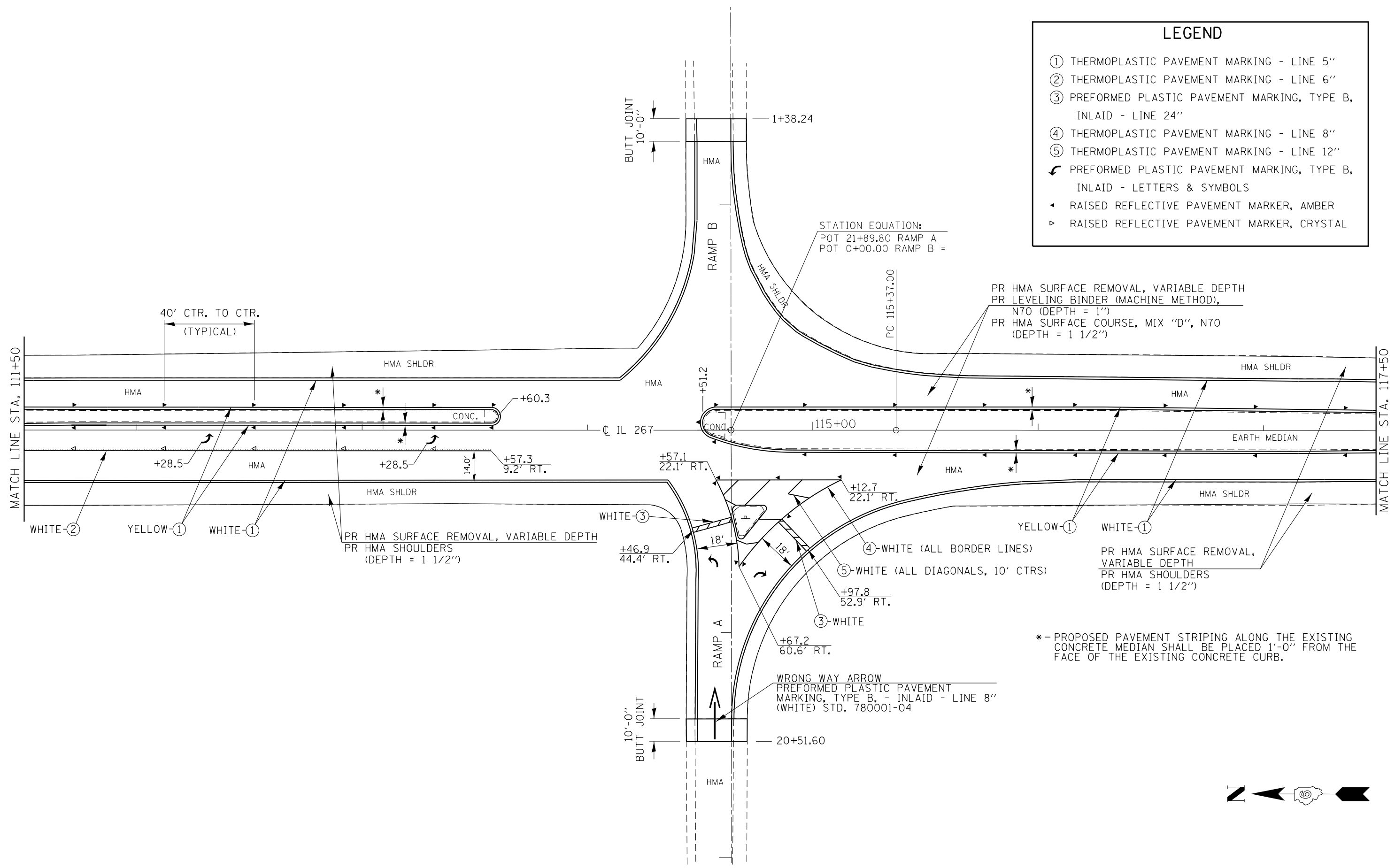


-- D6 SPRING RD REP/DE MISC 2014

FILE NAME =	USER NAME = sparksgw	DESIGNED - RTS	REVISED -	STATE OF ILLINOIS DEPARTMENT OF TRANSPORTATION	PLAN DETAILS LOCATION #3, IL 267				F.A. RTE.	SECTION	COUNTY	TOTAL SHEETS	SHEET NO.
Default	ei:\pw\work\p1dot\sparksgw\10387623\0672H00-sht-plan.dgn	DRAWN - RTS	REVISED -		SCALE: 1:50	SHEET 2	OF 6	SHEETS	STA.	TO STA.	MORG/SANG	20	16
	PLOT SCALE = 48.0000' / in.	CHECKED -	REVISED -								CONTRACT NO. 72H00		
	PLOT DATE = May-07-2014 10:10:29AM	DATE - 04-07-14	REVISED -								ILLINOIS FED. AID PROJECT		

LEGEND

- ① THERMOPLASTIC PAVEMENT MARKING - LINE 5"
- ② THERMOPLASTIC PAVEMENT MARKING - LINE 6"
- ③ PREFORMED PLASTIC PAVEMENT MARKING, TYPE B, INLAID - LINE 24"
- ④ THERMOPLASTIC PAVEMENT MARKING - LINE 8"
- ⑤ THERMOPLASTIC PAVEMENT MARKING - LINE 12"
- ↪ PREFORMED PLASTIC PAVEMENT MARKING, TYPE B, INLAID - LETTERS & SYMBOLS
- ▲ RAISED REFLECTIVE PAVEMENT MARKER, AMBER
- ▷ RAISED REFLECTIVE PAVEMENT MARKER, CRYSTAL



* - PROPOSED PAVEMENT STRIPING ALONG THE EXISTING CONCRETE MEDIAN SHALL BE PLACED 1'-0" FROM THE FACE OF THE EXISTING CONCRETE CURB.

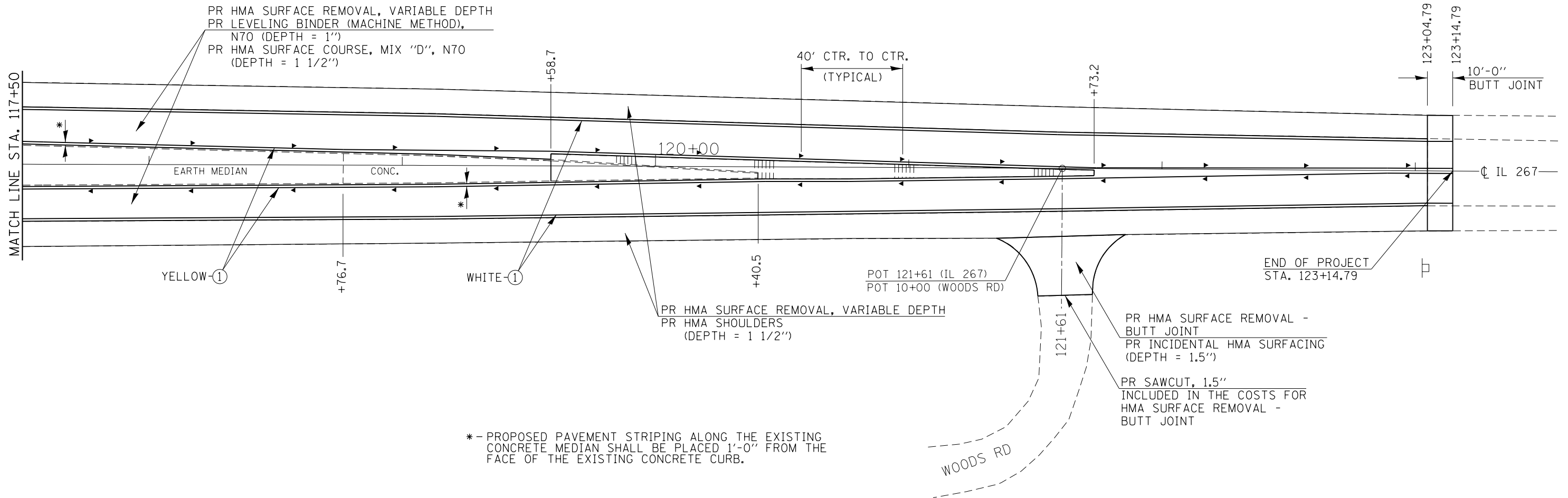


-- D6 SPRING RD REP/DE MISC 2014

FILE NAME =	USER NAME = sparksgw	DESIGNED - RTS	REVISED -	STATE OF ILLINOIS DEPARTMENT OF TRANSPORTATION	PLAN DETAILS LOCATION #3, IL 267			F.A. RTE.	SECTION	COUNTY	TOTAL SHEETS	SHEET NO.	
Default	Plot Scale = 40.0000' / in.	DRAWN - RTS	REVISED -		SCALE: 1:50	SHEET 3	OF 6 SHEETS	STA.	TO STA.	MORG/SANG	20	17	
	PLOT DATE = May-07-2014 11:03:50AM	CHECKED -	REVISED -							CONTRACT NO. 72H00			
		DATE - 04-07-14	REVISED -							ILLINOIS FED. AID PROJECT			

PI Sta 120+37.00
 EXIST. CURVE M305
 PI STA. = 120+37.00
 $\Delta = 0^\circ 31' 32''$ (RT)
 $D = 0^\circ 03' 09''$
 $R = 108,990.65'$
 $T = 500.00'$
 $L = 999.99'$
 $E = 1.15'$
 $e = \text{no curve}$
 $T.R. = \text{n/a}$
 $S.E. \text{ RUN} = \text{n/a}$
 $P.C. \text{ STA.} = 115+37.00$
 $P.T. \text{ STA.} = 125+36.99$

LEGEND	
①	THERMOPLASTIC PAVEMENT MARKING - LINE 5"
②	THERMOPLASTIC PAVEMENT MARKING - LINE 6"
③	PREFORMED PLASTIC PAVEMENT MARKING, TYPE B, INLAID - LINE 24"
↪	PREFORMED PLASTIC PAVEMENT MARKING, TYPE B, INLAID - LETTERS & SYMBOLS
▲	RAISED REFLECTIVE PAVEMENT MARKER, AMBER
▷	RAISED REFLECTIVE PAVEMENT MARKER, CRYSTAL



* - PROPOSED PAVEMENT STRIPING ALONG THE EXISTING CONCRETE MEDIAN SHALL BE PLACED 1'-0" FROM THE FACE OF THE EXISTING CONCRETE CURB.



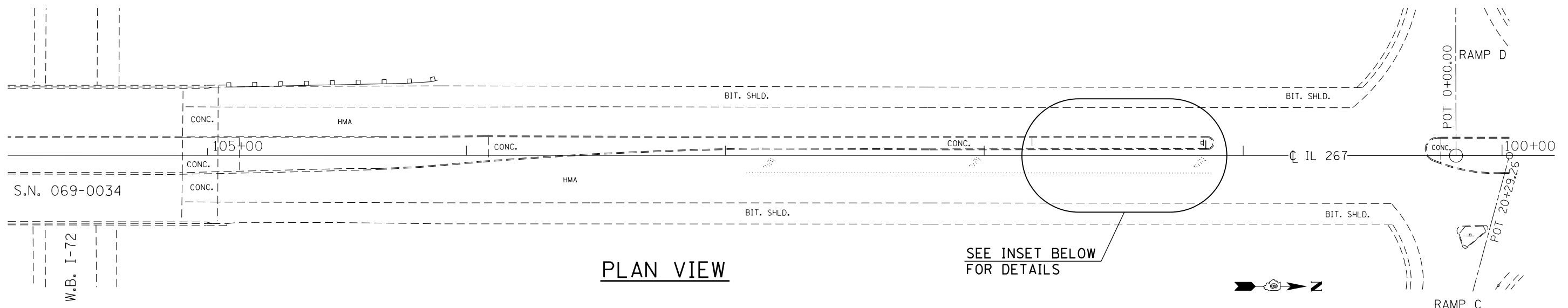
-- D6 SPRING RD REP/DE MISC 2014

FILE NAME =	USER NAME = sparksgw	DESIGNED - RTS	REVISED -
ci:\pw\work\p\dot\sparksgw\10387623\0672H00-sht-plan.dgn		DRAWN - RTS	REVISED -
Default	PLOT SCALE = 40.0000' / in.	CHECKED -	REVISED -
	PLOT DATE = May-07-2014 11:04:10AM	DATE - 04-07-14	REVISED -

STATE OF ILLINOIS
 DEPARTMENT OF TRANSPORTATION

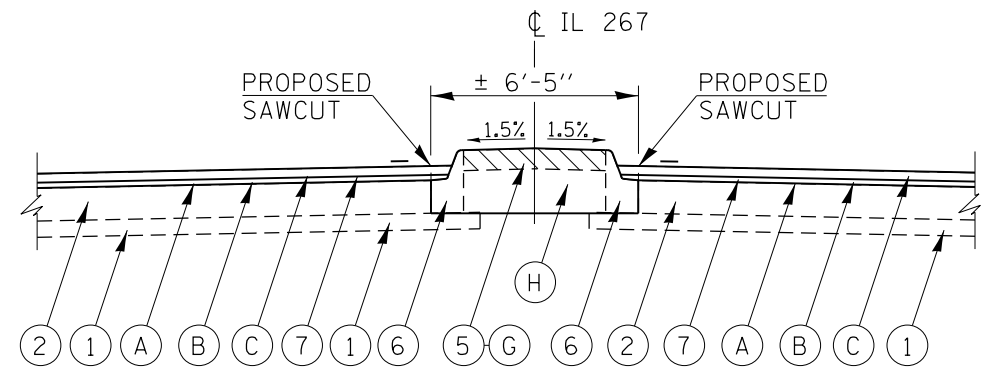
PLAN DETAILS		LOCATION #3, IL 267	
SCALE: 1:50	SHEET 4 OF 6 SHEETS	STA.	TO STA.

F.A. RTE.	SECTION	COUNTY	TOTAL SHEETS	SHEET NO.
VAR.	.	MORG/SANG	20	18
CONTRACT NO. 72H00				
ILLINOIS FED. AID PROJECT				



PLAN VIEW

SEE INSET BELOW FOR DETAILS



STA. 101+34.67 TO STA. 102+22.50

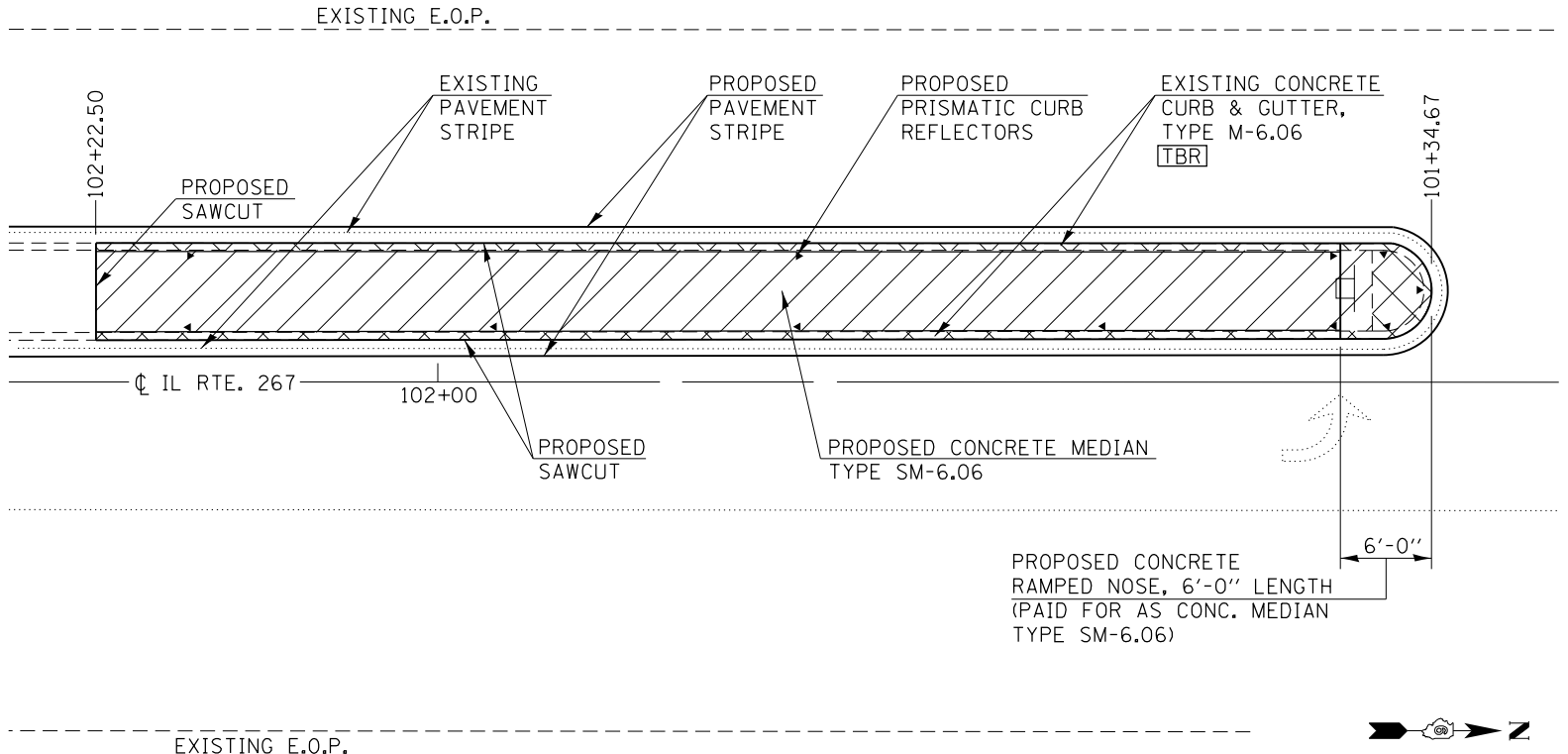
LEGEND

- ① EXISTING STABILIZED SUBBASE, 4"
- ② EXISTING PCC PAVEMENT, 8"
- ⑤ EXISTING CONCRETE MEDIAN SURFACE, 4"
- ⑥ EXISTING COMB. CONC. C & G, TYPE M-6.06
- ⑦ EXISTING HMA SURFACE (DEPTH = 2 1/2")
- A PROPOSED HMA SURFACE REMOVAL, VARIABLE DEPTH (MAINLINE, 2 1/2")
- B PROPOSED LEVELING BINDER (MACHINE METHOD), N70, 1"
- C PROPOSED HMA SURFACE COURSE, MIX "D", N70, 1 1/2"
- G PROPOSED COMBINATION CONCRETE MEDIAN SURFACE REMOVAL
- H PROPOSED CONCRETE MEDIAN TYPE SM-6.06

TYPICAL CROSS SECTION

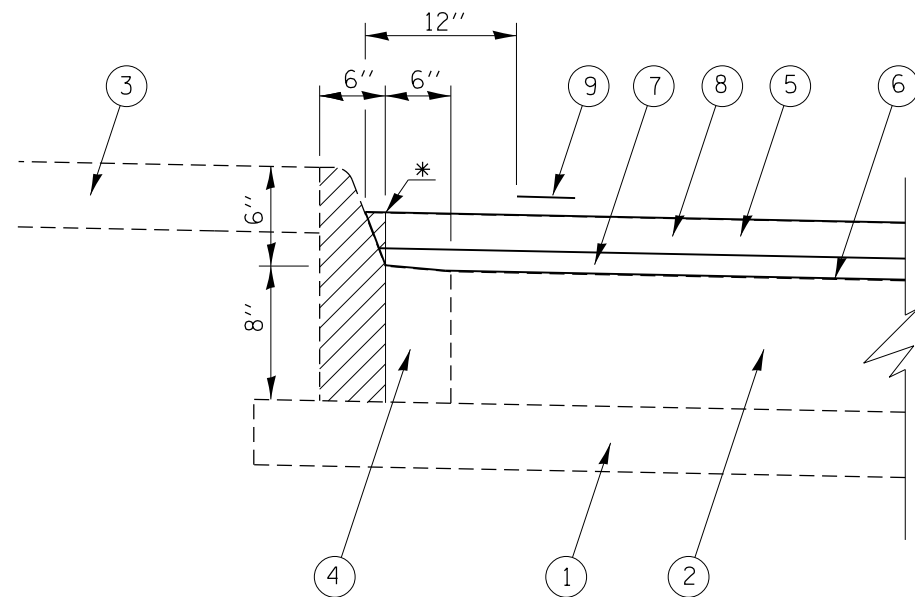
BILL OF MATERIALS			
CODE #	ITEM	UNIT	QUANTITY
20200110	EARTH EXCAVATION	CU YD	20.0
44000500	COMBINATION CURB AND GUTTER REMOVAL	FOOT	178.0
78200300	PRISMATIC CURB REFLECTOR	EACH	11
X4402020	CONCRETE MEDIAN SURFACE REMOVAL	SQ FT	395.0
60622400	CONCRETE MEDIAN TYPE SM-6.06	SQ FT	571.0

NOTES:
 THE PROPOSED ELEVATION FOR THE TOP OF PROPOSED CONCRETE MEDIAN TYPE SM-6.06 SHALL MEET THE ELEVATION FOR THE TOP OF THE EXISTING CONCRETE MEDIAN SURFACE.
 ALL SAWCUTS ARE INCLUDED IN THE COSTS FOR COMBINATION CURB AND GUTTER REMOVAL.
 PROPOSED PAVEMENT STRIPING ALONG THE CONCRETE MEDIAN SHALL BE PLACED 1'-0" FROM THE FACE OF THE PROPOSED CONCRETE CURB.



INSET

-- D6 SPRING RD REP/DE MISC 2014



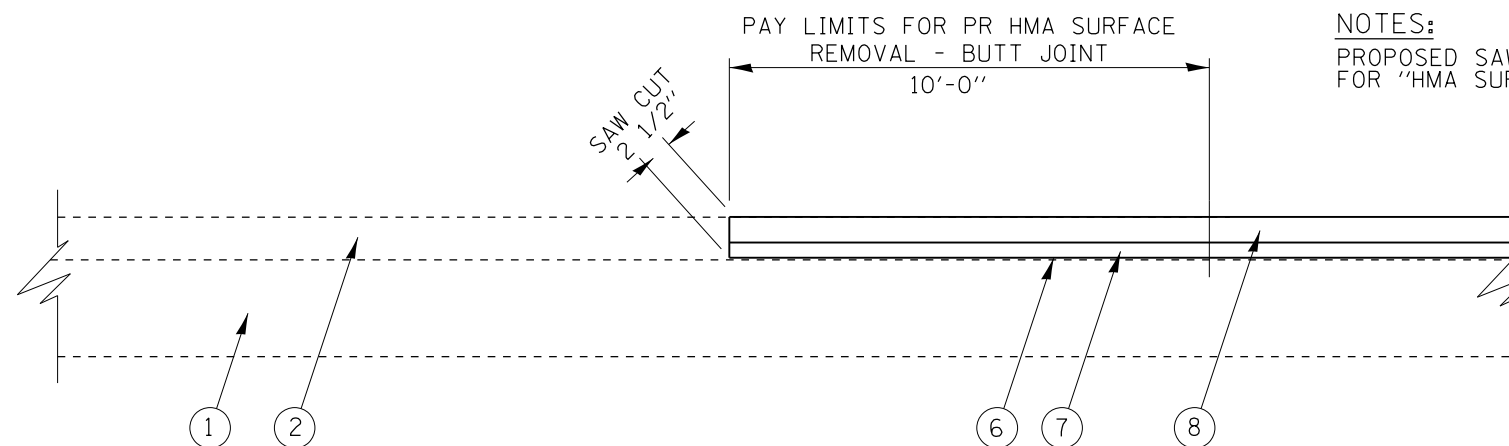
**PROPOSED CONCRETE CURB REPAIR DETAIL
IL 267, VARIOUS LOCATIONS**

LEGEND

- ① EXISTING STABILIZED SUBBASE, 4"
- ② EXISTING PCC PAVEMENT, 8"
- ③ EXISTING CONCRETE MEDIAN SURFACE, 4"
- ④ EXISTING COMB. CONC. C & G, TYPE M-6.06
- ⑤ EXISTING HMA SURFACE (DEPTH = 2 1/2")
- ⑥ PROPOSED HMA SURFACE REMOVAL, VARIABLE DEPTH (MAINLINE)
- ⑦ PROPOSED LEVELING BINDER (MACHINE METHOD), N70, 1"
- ⑧ PROPOSED HMA SURFACE COURSE, MIX "D", N70, 1 1/2"
- ⑨ PROPOSED THERMOPLASTIC PAVEMENT MARKING - LINE 5"

* - CONCRETE CURB SAWCUTS, WILL NOT BE PAID FOR SEPARATELY BUT INCLUDED IN THE COSTS FOR "CONCRETE CURB REPAIR".

PROPOSED CONCRETE CURB REPAIR (THE ENGINEER SHALL DETERMINE ACTUAL LOCATIONS WITHIN THE PROJECT LIMITS FOR CONCRETE CURB REPAIR)



NOTES:
PROPOSED SAWCUTS ARE TO INCLUDED IN THE COSTS FOR "HMA SURFACE REMOVAL - BUTT JOINT".

**PROPOSED BUTT JOINT DETAIL
IL 267, VARIOUS LOCATIONS**

-- D6 SPRING RD REP/DE MISC 2014

FILE NAME =	USER NAME = sparksgw	DESIGNED - RTS	REVISED -	STATE OF ILLINOIS DEPARTMENT OF TRANSPORTATION	LOCATION #3, IL 267			F.A.P. RTE.	SECTION	COUNTY	TOTAL SHEETS	SHEET NO.
Default	PLOT DATE = May-07-2014 10:10:30AM	DRAWN - RTS	REVISED -					VAR.	.	MORG/SANG	20	20
		CHECKED -	REVISED -		SCALE:	SHEET 6	OF 6	SHEETS	STA.	TO STA.	CONTRACT NO. 72H00	
		DATE - 4-10-2014	REVISED -		ILLINOIS FED. AID PROJECT							